

LQC Series

"Twister®" Locking Quick Connect

The World's Safest Coupling

The Twister LQC is the only coupling in the world guaranteed to not come off when pressure is in the line*. Engineered for critical-service applications, the LQC excels in extreme temperatures and pressures.

Features and Benefits

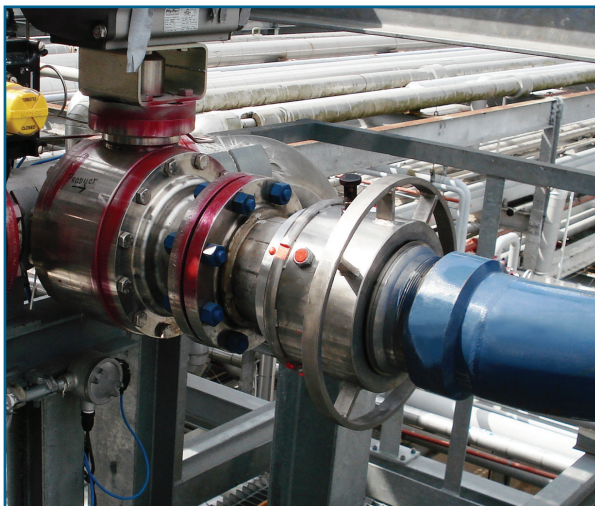
- Physically impossible to disengage coupling when pressure is in the line*
- Exceptional materials of construction provide flexibility of application
- ¼-turn ON/OFF provides rapid engagement and reduces operator stress
- Engagement of connection and disconnection is done by hand – no tools required
- Smooth bore is ideal for pigging applications

Specifications

- Available in Sizes: ¾", 1", 2", 3", 4" and 6"
- Materials of Construction: Stainless Steel, Cold-Temperature Carbon Steel & Aluminum
- Pressure Ratings Equivalent to ANSI 150/300



HILTAP



Applications

Perfect for situations where connections of high or low temperatures and pressures are experienced – in-plant, through plant, out-of-plant.

- Oil
- LPG
- Acids
- Lubricants
- Ammonia
- Paints
- Fracking
- Metal Alkyls
- And More

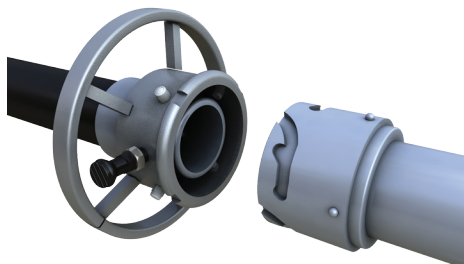


*Minimum pressure to lock will vary by size

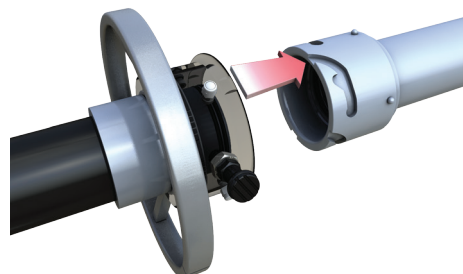
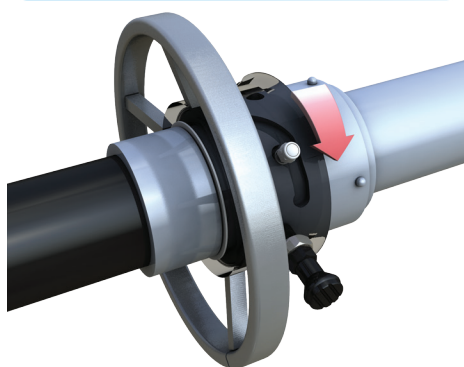
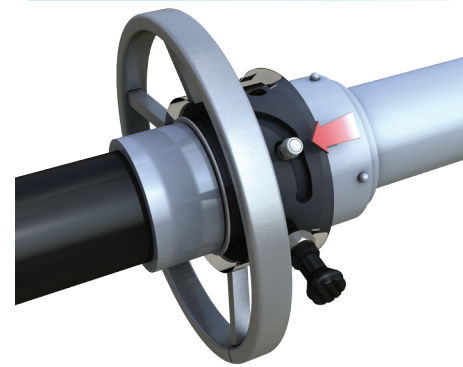


LQC Quick Coupling – Connecting with a *Twist*

Easy Alignment



1/4 Turn Rapid Engagement

Pressure or Vacuum
Energizes Sealing & LockingPressure Locking
The Ultimate Safety Feature

LQC Temperature and Pressure Ratings

Size	Fluorocarbon, EPDM, Sat. Nitrile, Encap Fluorocarbon		Buna-N		Neoprene		Max PSI	Max BAR
1" CS	250° F	121° C	248° F	120° C	250° F	121° C	655	45
1" SST	250° F	121° C	248° F	120° C	250° F	121° C	560	39
1" Alum	250° F	121° C	248° F	120° C	250° F	121° C	260	18
2" Aluminum & 2" CS and SST w/ Aluminum Sleeve	250° F	121° C	248° F	120° C	250° F	121° C	260	18
2" CS	250° F	121° C	248° F	120° C	250° F	121° C	655	45
2" SST	250° F	121° C	248° F	120° C	250° F	121° C	560	39
3" Aluminum & 3" CS and SST w/ Aluminum Sleeve	250° F	121° C	248° F	120° C	250° F	121° C	260	18
3" CS	250° F	121° C	248° F	120° C	250° F	121° C	655	45
3" SST	250° F	121° C	248° F	120° C	250° F	121° C	560	39
4" Aluminum & 4" CS and SST w/ Aluminum Sleeve	250° F	121° C	248° F	120° C	250° F	121° C	260	18
4" CS	250° F	121° C	248° F	120° C	250° F	121° C	655	45
4" SST	250° F	121° C	248° F	120° C	250° F	121° C	560	39

NOTE: This chart represents the most commonly requested specifications. Call (513) 932-9114 if higher temperature and pressure tolerances are required.