



# DEF PIPING, CONTAINMENT & FILLING SOLUTIONS



 Industry-Leading  
Piping & Containment

 Emergency Shut-Off

 Remote Fill Spill  
Containment

**OPW**   
RETAIL FUELING  
a **DOVER** company

LEARN MORE. VISIT US AT:  
[opwglobal.com/products/us/retail-fueling-products/def-handling-hardware](http://opwglobal.com/products/us/retail-fueling-products/def-handling-hardware)

# FROM ONE END TO THE OTHER

## OPW 21Gu™ Nozzle

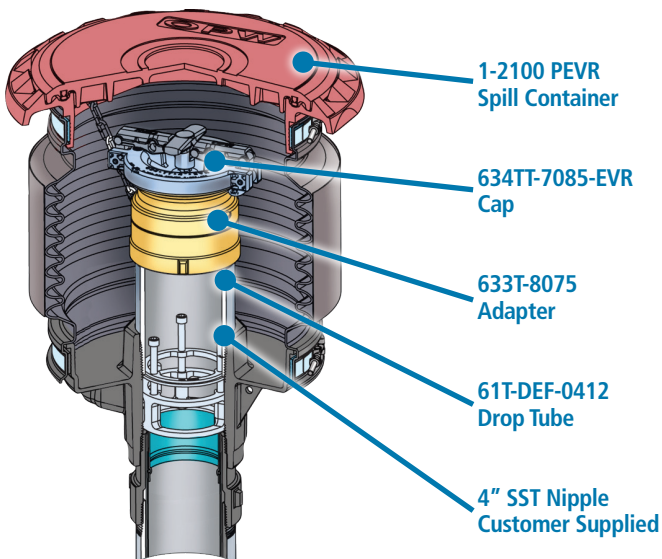
- End-to-end dispensing hardware solution for reliable, efficient DEF/AdBlue-filling
- Industry standard DEF/AdBlue-filling solution in Europe
- Unique Mis-Filling Prevention Device (MFPD) provides unparalleled filling assurance and peace of mind
- Automatic Shutoff Feature shuts off nozzle when the tank is full
- Spout with magnetic interface prevents mis-filling mishaps
- Durable streamlined nozzle design for easy, comfortable nozzle handling makes it easy to differentiate DEF products



## OPW 21Gu™ Hose Assembly

Designed with integral swivel couplings and an anti-kinking sleeve, the OPW 21Gu hose is easy to install and use. The 21Gu hose meets compatibility testing as specified in ISO 22241 so that you can rest assured that your hose will last.

- Specially designed for DEF-flow applications
- Lightweight and highly flexible for easy customer handling
- Smooth bore, seamless fluoropolymer lining for exceptional flow performance



## Spill Bucket & Accessories

The OPW Thread-On 1-2100-EVR Series Spill Containers with composite bases are compatible with DEF fluids

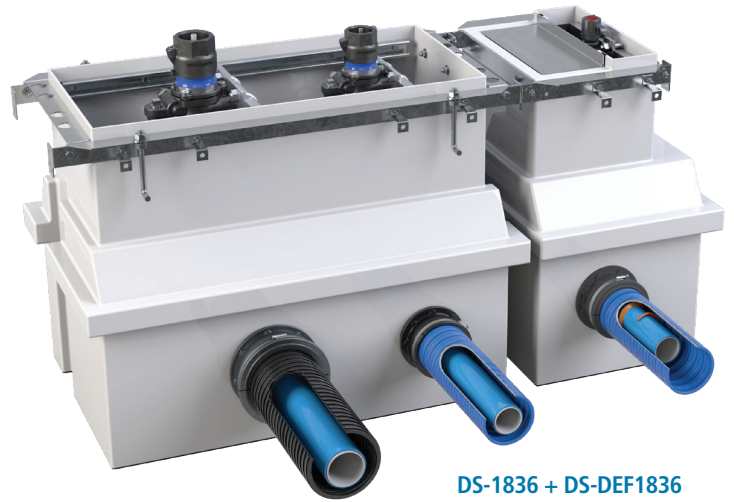
- Available in 5- or 15-gallon buckets
- See DEF configuration on 5-gallon version
- OPW Thread-On Spill Containment Manholes are generally used on new tank or riser-pipe installations
- 1-2100 spill bucket REQUIRES a composite base

# R, WE'VE GOT YOU COVERED

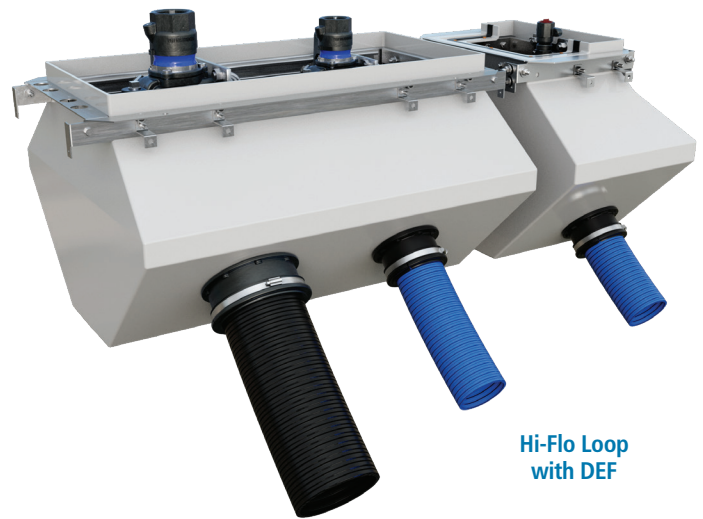
## DEF Containment Sumps

Offering both DEF Loop Sump - a fast, DEF specific bolt-on sump with the same great value of Loop - and the same bolt-on containment sumps to be installed for a traditional UDC.

- DEF containment adapted to the same profile as our one-piece polyethylene Dispenser Sumps for Encore and Ovation II
- Depending on dispenser configuration, sumps can be bolted on either side to fit within the dispenser manufacturer's footprint
- For an Encore dispenser, the DS-DEF-1836 is a traditional-style DEF UDC, which can be added to either a DSE-1836 or DS-1836. This sump requires an SBK-1800 stabilizer bar
- When using a DEF-recirculation system, OPW piping and shear valves now include an integrated port for temperature-probe installation
- The OPW FlexWorks Piping System, when used with AXP access pipe, is an ideal solution when integrating a heat-trace tape within the system



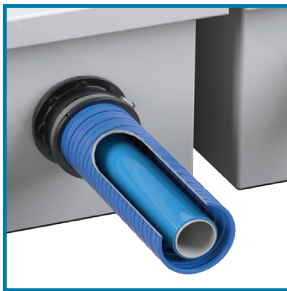
DS-1836 + DS-DEF1836



Hi-Flo Loop with DEF

Standard Configuration		
Containment Sump		DEF Sump
DSE-1836	X	DS-DEF-1836
DS-1836		
DS-1535		

Loop Configuration		
DSLH/DSLHF-XX-1836-XXX	X	DSLXX-DEF-XX-1836
DSLH/DSLHF-XX-1535-XXX		DSLXX-DEF-XX-1535L/R



## Flexworks Piping

Compatible with all fuels, including DEF, OPW FlexWorks piping is lightweight, flexible, easy to install, and can be used with both heat trace and recirculation systems.



## Entry Fittings

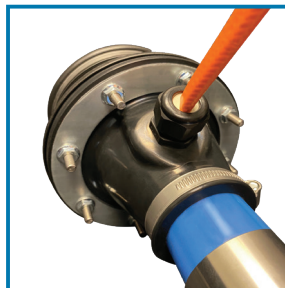
OPW Rigid (REF) and Hybrid (HEF) Entry Fittings are DEF compatible and offer superior protection, ease of install and flexibility.



## 60V-DEF-SS Shear Valve

OPW's new 60V-DEF-SS Shear Valve body is made of 100% stainless construction, for unmatched compatibility.

- Third-party tested to ensure compatibility with the ISO 22241 Standard
- NPT connections on the top and bottom of the valve
- Provides peace of mind and minimizes damage to your DEF-dispensing equipment in the case of impact collision, while preventing product loss



## Heat-Trace Entry Fittings

Available Heat-Trace Entry Fittings – HEF-4015G and HEF-4020G – for 1.5" or 2" FlexWorks designed specifically for DEF.



## OPW 6211SSR

### Stainless Steel Remote-Fill Solution

OPW Remote-Fill AST Spill Containers are stainless steel and designed to prevent spilled product from entering soil near the remote, horizontal-fill and vapor-return connections on an aboveground storage tank during normal tank-filling operation. The spill containers catch spillage to help prevent soil contamination and groundwater pollution.



## OPW 144/444TA Alarm

The OPW AST remote Four-Signal Tank Alarm is designed to sense up to four different liquid levels or other signals using just one device.



## Kamvalok Fill Adaptors

- 1672AN SS20, 2" and 1672AN SS30, 3" Stainless Steel Kamvalok® Adaptors designed to mate with OPW Kamvalok® Dry Disconnect Couplings
- Internal spring-loaded valve assembly automatically closes to help prevent spillage of DEF