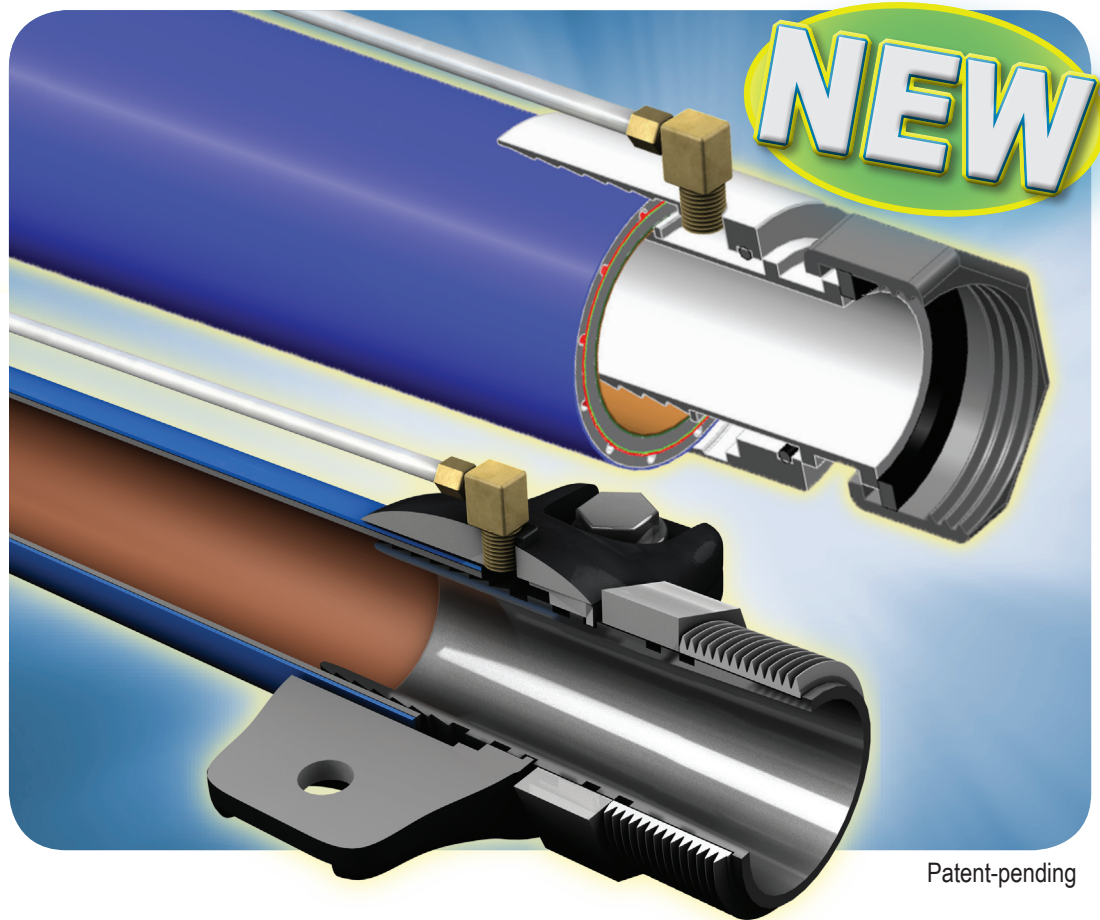


NEW REQUIREMENTS DEMAND NEW SOLUTIONS



Patent-pending

Can you integrity test or continuously monitor your piping interstice?

True Double-Wall Pipe Couplings

- ◆ Permanent testing access to the pipe's interstitial space
- ◆ Eliminates rubber test boots completely
- ◆ Eliminates the need to trim back secondary pipe jacket
- ◆ Bolt-on or swaged-on designs for any application

Leading the Way in Fueling Innovation Worldwide

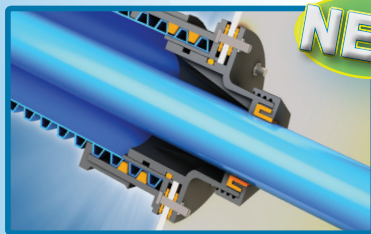
Introducing

NEXT-GENERATION SOLUTIONS FOR NEXT-GENERATION REQUIREMENTS

In the ever-evolving world of environmental protection, you need an underground fuel transfer and containment system that provides advanced capabilities that enable you to provide a higher level of protection, meet Next-Generation compliance needs and help you control costs.

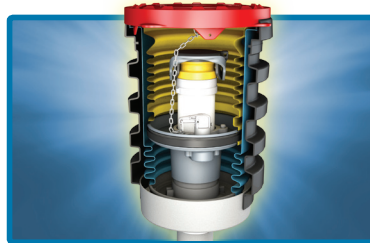
You need a Next-Generation solution from OPW! Proven. Reliable. Innovative. The only fully integrated underground system that provides for end-to-end double containment, complete testing, monitoring and is totally accessible all the time.

Stop Doing This...	Start Doing This...	Enjoy This...
The Old Way	The OPW Next-Generation Way	Customer Benefits
Single containment risk	End-to-end double containment protection	Reduces risk of environmental mishaps, non-compliance, fines
Hope it works	Completely testable	Peace-of-mind assurance
Hope nothing goes wrong	End-to-end monitoring	Total underground system visibility / rapid response
Complex system (30-40 parts); more things that can go wrong = higher cost	Simplicity (10-20 parts); fewer parts to stock and install = lower cost	Saves time, money, hassles
Time-consuming to install	50% faster and easier to install than any other system	Faster install = lower costs and faster uptime
Breaking concrete – dig it up to repair/replace	100% accessible without breaking concrete	Lower overall cost; helps to prevent downtime losses



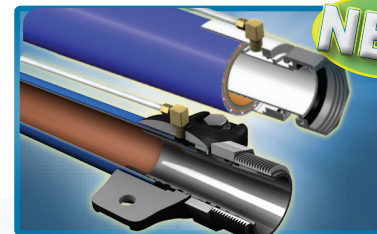
Next-Generation Entry Fitting

- Double containment to ensure dry sump integrity
- Preserves accessibility and repair-ability



EDGE™ Double-Wall Spill Containment

- Totally accessible for improved testing and serviceability
- Completely upgradeable, replaceable without breaking concrete



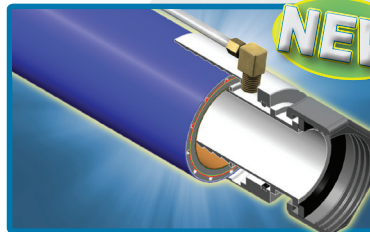
True Double-Wall Pipe Couplings

- Permanent testing access to the pipe's interstitial space
- Eliminates rubber test boots completely
- Eliminates the need to trim back secondary pipe jacket



Innovative Loop System

- Saves installation time and money; improves install reliability
- Easily accessible and replaceable without removal of dispenser



Next-Generation OPW FlexWorks Pipe

- Increased Pipe Flexibility – The force required to bend the pipe has been reduced to facilitate piping layout, making installation quicker and easier, especially in cold weather
- Next-generation, enhanced KYNAR liner



10 Plus Emergency Valves

- Easily accessible under the dispenser
- New hand bolt feature enhances serviceability



3250 US Hwy. 70 Business West • Smithfield, NC 27577
Customer Service: (800) 422-2525 • Fax: (800) 421-3297
Technical Service: **877-OPW-TECH** (877) 679-8324

www.opwglobal.com

NEXTGEN FLYER 9/11 • ???