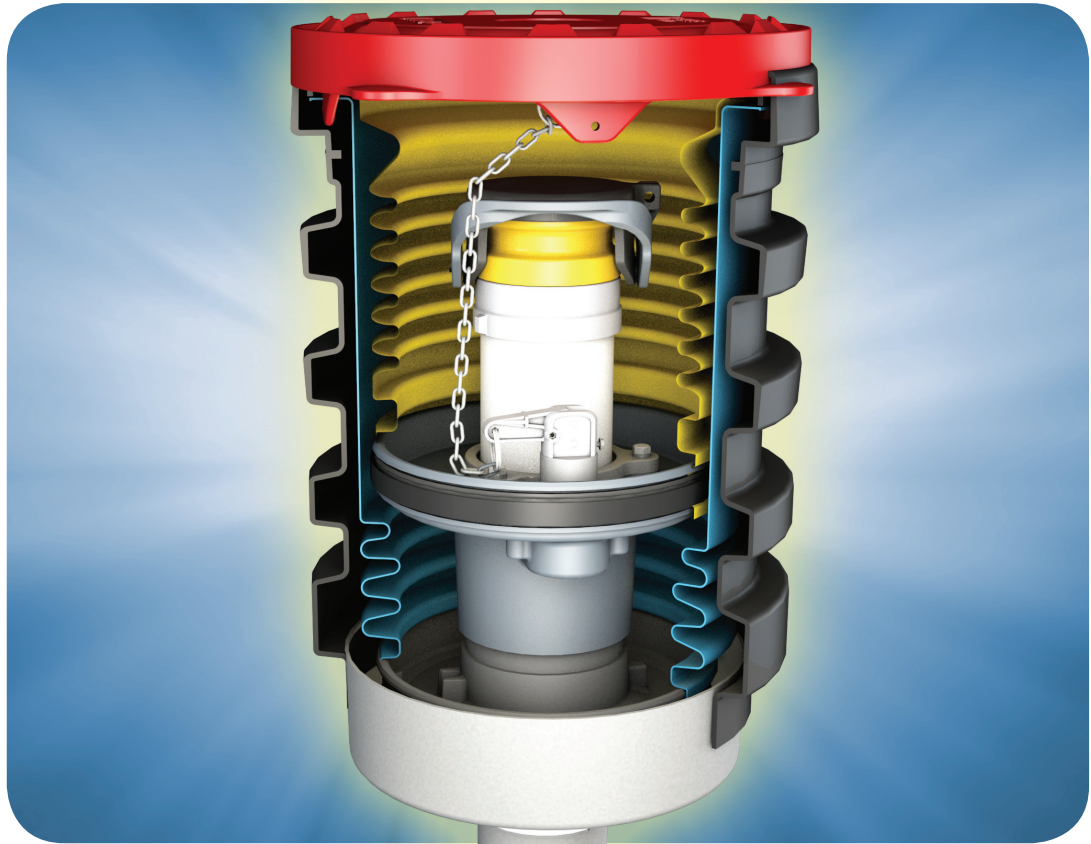


# NEW REQUIREMENTS DEMAND NEW SOLUTIONS



Patent-pending

**Are your Spill Containers designed for the new, more stringent field testing?**

## **EDGE™ Series Cartridge Style Single and Double-Wall Spill Containers**

- ◆ Engineered Static Seals – No messy sealant or dynamic seals to degrade and fail
- ◆ Robust Construction – For years of service and solid integrity testing performance
- ◆ Completely upgradeable, replaceable without breaking concrete

*Leading the Way in Fueling Innovation Worldwide*

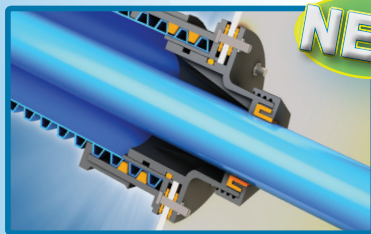
*Introducing*

# NEXT-GENERATION SOLUTIONS FOR NEXT-GENERATION REQUIREMENTS

In the ever-evolving world of environmental protection, you need an underground fuel transfer and containment system that provides advanced capabilities that enable you to provide a higher level of protection, meet Next-Generation compliance needs and help you control costs.

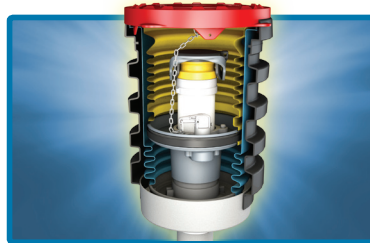
You need a Next-Generation solution from OPW! Proven. Reliable. Innovative. The only fully integrated underground system that provides for end-to-end double containment, complete testing, monitoring and is totally accessible all the time.

Stop Doing This...	Start Doing This...	Enjoy This...
<b>The Old Way</b>	<b>The OPW Next-Generation Way</b>	<b>Customer Benefits</b>
Single containment risk	End-to-end double containment protection	Reduces risk of environmental mishaps, non-compliance, fines
Hope it works	Completely testable	Peace-of-mind assurance
Hope nothing goes wrong	End-to-end monitoring	Total underground system visibility / rapid response
Complex system (30-40 parts); more things that can go wrong = higher cost	Simplicity (10-20 parts); fewer parts to stock and install = lower cost	Saves time, money, hassles
Time-consuming to install	50% faster and easier to install than any other system	Faster install = lower costs and faster uptime
Breaking concrete – dig it up to repair/replace	100% accessible without breaking concrete	Lower overall cost; helps to prevent downtime losses



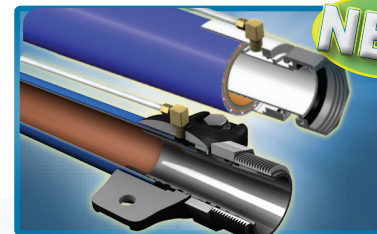
### Next-Generation Entry Fitting

- Double containment to ensure dry sump integrity
- Preserves accessibility and repair-ability



### EDGE™ Double-Wall Spill Containment

- Totally accessible for improved testing and serviceability
- Completely upgradeable, replaceable without breaking concrete



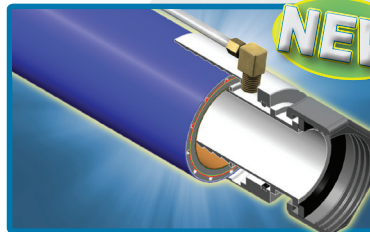
### True Double-Wall Pipe Couplings

- Permanent testing access to the pipe's interstitial space
- Eliminates rubber test boots completely
- Eliminates the need to trim back secondary pipe jacket



### Innovative Loop System

- Saves installation time and money; improves install reliability
- Easily accessible and replaceable without removal of dispenser



### Next-Generation OPW FlexWorks Pipe

- Increased Pipe Flexibility – The force required to bend the pipe has been reduced to facilitate piping layout, making installation quicker and easier, especially in cold weather
- Next-generation, enhanced KYNAR liner



### 10 Plus Emergency Valves

- Easily accessible under the dispenser
- New hand bolt feature enhances serviceability



3250 US Hwy. 70 Business West • Smithfield, NC 27577  
Customer Service: (800) 422-2525 • Fax: (800) 421-3297  
Technical Service: **877-OPW-TECH** (877) 679-8324

[www.opwglobal.com](http://www.opwglobal.com)