

Swivel fittings are a proven coupling and fitting system designed exclusively for use with FlexWorks piping.

Corrosion Protection

Swivel couplings and fittings are of a single wall design and are used to interconnect FlexWorks flexible piping. These UL/ ULC listed stainless steel couplings must be contained within containment sumps and not directly buried.

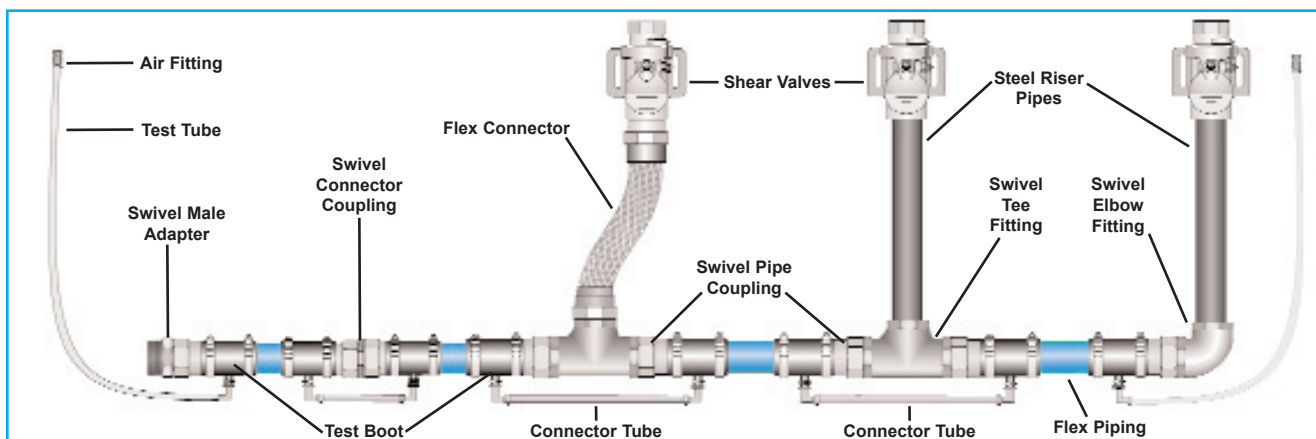
The pipe connection system includes an internally expanded stainless steel coupling attached to the end of a FlexWorks pipe section. The swivel coupling has a smooth sealing face fitted with a viton ring gasket. The couplings have a swivel nut used to connect the pipe coupling to the swivel fitting. By tightening the swivel nut, the sealing face of the swivel coupling and swivel fitting come together to compress the gasket for a high pressure seal.

Features

- UL / ULC listed for use with Flex piping
- Quick, easy to install
- All stainless steel couplings
- Internally expanded couplings

Coupling Machine

Swivel couplings require the use of an OPW-FCS coupling machine to internally expand the stainless steel fitting onto the end of a FlexWorks pipe section. Internally expanded couplings have a long, successful history of reliable performance.





Descriptions

Pipe Couplings

Installs to the end of each FlexWorks flexible pipe section to provide a means of connection to swivel fittings and adapters. Made of an all stainless steel construction, these swivel couplings fasten to the end of a flexible pipe section using an OPW-FCS coupling machine.



Swivel Tee Fittings

These tee fittings are used in pressure piping systems which are routed in series. These tee fittings interconnect two flexible piping sections fitted with swivel pipe couplings to a rigid or flexible riser pipe. Swivel junction tees are made of zinc plated ductile iron and can only be installed in dispenser sumps.



Swivel Elbow Fittings

These elbow fittings are used in both pressure and suction pipe systems which are routed directly or in series. These elbow fittings interconnect a flexible pipe section fitted with a swivel pipe coupling to a rigid or flexible riser pipe. Terminating elbow fittings are made of zinc plated ductile iron and can only be installed in dispenser sumps.



Adapters

Male and female adapters are available to interconnect a coupled pipe section to an assortment of plumbing configurations. Constructed from zinc plated steel, these fittings must be used in a containment sump.



Pipe Connector

This connector fitting is used to interconnect one flexible pipe section to another flexible pipe section. Pipe connectors can only be installed in containment sumps.



General Installation Of Couplings

Step 1

Cut the pipe squarely to the desired length using the FlexWorks pipe cutter.



Step 2

For FlexWorks double wall pipe, cut the jacket back using the Flex jacket cutter.



Step 3

Lubricate the inside of the coupling insert with metal assembly paste to reduce friction.



Step 4

Install the coupling insert and ferrule over the coupling machine shaft, onto the faceplate. Thread the swage down onto the shaft.



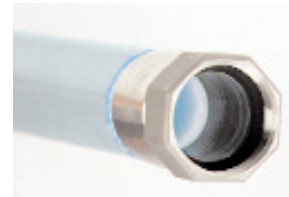
Step 5

Insert the end of the pipe section into the coupling and turn the coupling machine on. (Make sure the pipe is completely inserted into the coupling).



Step 6

Inspect the coupled swivel coupling to make sure the ring gasket is evenly set inside the swivel nut. Replace the protective cap.



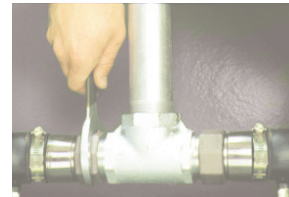
Step 7

Install the coupled pipe section to the fitting by hand tightening the swivel nut onto the fitting.



Step 8

Using the FlexWorks swivel wrench, further tighten the swivel nut an additional quarter turn.



OPW Fueling Containment Systems

3250 US 70 Business West
Smithfield, N.C., 27577-0330

Customer Service: 1-800-422-2525

Customer Service Fax: 1-800-421-3297

Technical Service: 1-(919) 934-2786

www.opwfcs.com