



OPW-FCS's pipe and conduit entry seals have proven to be reliable and safe.

FlexWorks flexible entry boots have proven to be reliable, safe seals for pipe and conduit entries into underground containment sumps. Flexible entry boots allow for angled pipe entries and have no exposed metal parts to the underground environment. These entry boots are available in a variety of sizes and designs to accommodate rigid and flexible piping, ducting and conduit.

Features

- Watertight pipe and conduit entries
- Installation on flat or round surface
- Permits angled entries up to 15°

Versatility

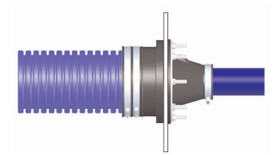
There are a number of different size and types of flexible entry boots available and designed to meet all FlexWorks piping system and other piping applications. Refer to the flexible entry boot manual or FlexWorks Catalog or Price List for more detailed information.

Easy Installation

Flexible entry boots are easy to install requiring no adhesives, caulking or custom tools.



Flex Pipe Entries



Access Pipe Entries

Sizes Available

Boot ID	Boot OD	Part No.	Application
1.32"	4.53"	EBF-0751	1/2", 3/4" and 1" Conduit Entry Boot Fitting
2.00"	5.60"	EBF-0150	1.5" Entry Boot Fitting for 1.5" DW Pipe
2.37"	5.60"	EBF-0200F	2" Entry Boot Fitting for 2" Rigid
2.63"	5.60"	EBF-0200	2" Entry Boot Fitting for 2" DW Flex Pipe
3.56"	6.78"	EBF-0300	3" Entry Boot Fitting for 3" DW Flex Pipe or 3" Rigid
4.50"	7.72"	EBF-0400	4" Entry Boot Fitting for 4" Rigid Pipe
6.50"	9"	EBF-0600	6" Entry Boot Fitting for 6" Rigid Pipe
		SAB-7400	4" Sump Access Boot



Positive Seal

Sump Entry

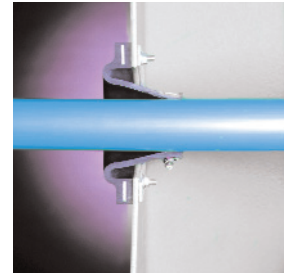
Flexible entry boots have been tested to withstand a minimum of 6' of liquid head pressure. These seals provide a studded flange connection to create a positive and secure seal where the rubber contacts the sump wall and also around the pipe or conduit. Tightening down on a series of stud fasteners with a compression ring provides a high compression mechanical seal compared to screw on type bulkhead seals.



Quality Materials

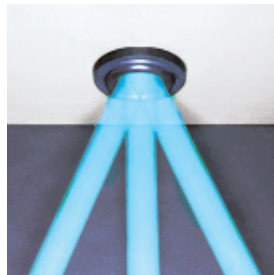
Corrosion Resistance

The exterior studded metal compression ring that provides the positive sealing pressure is encapsulated within rubber to protect it from corrosion. More than a 1/8" of rubber isolates the metallic studded ring from the ground environment. All studs are made of 401 stainless steel and are only exposed on the inside of the containment sump.



Angled Entries

Pipe and conduit entering the containment sumps may not be perpendicular with the sump wall. Angled entries are generally a result of directional plumbing restrictions on the inside of the containment chamber due to space limitations. Flexible entry boots are flexible enough to permit angled pipe or conduit entries (on two axes) into the sidewall of a containment chamber. All flexible entry boots permit angled entries up to a 15 degree angle off the perpendicular center line in any direction without leaking or putting undue stress on the pipe or conduit seal.



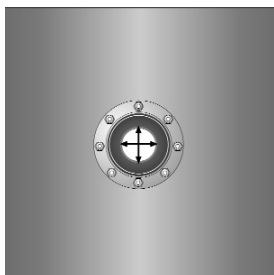
Chemical Compatibility

All seals are made of a specially formulated PVC Nitrile compound which has been independently tested to insure its compatibility with a wide assortment of chemicals. These tests include measuring the material's retention of properties as well as the physical characteristics of the seal after exposure.



Universal Alignment

These seals are also capable of universal pipe alignment either up and down or side to side. This feature allows accommodation of pipe entry holes which are installed slightly off exact center alignment in the chamber wall. This movement will prevent the chamber wall from putting undue stress on the pipe coupling/fitting joint and the entry boot as well. For flexible piping applications within dispenser sumps, the stresses on the pipe fittings below the product inlets are minimized by the boot's flexibility.



Easy to Install



OPW Fueling Containment Systems

3250 US 70 Business West
Smithfield, N.C., 27577-0330

Customer Service: 1-800-422-2525
Customer Service Fax: 1-800-421-3297
Technical Service: 1-(919) 934-2786

Publication: EBF-0001
Issue Date: 03-26-09
Supercedes: 12-19-07