



**The Barbed fitting system is designed for job installations when the FlexWorks coupling machine is not going to be used. Barbed fittings are fast and easy to install and provide a very effective seal.**

## Features

- UL listed for *FlexWorks* piping
- No coupling machine required
- Stainless steel clamps
- Barbs are offset
- Interlock design



Barbed Fitting

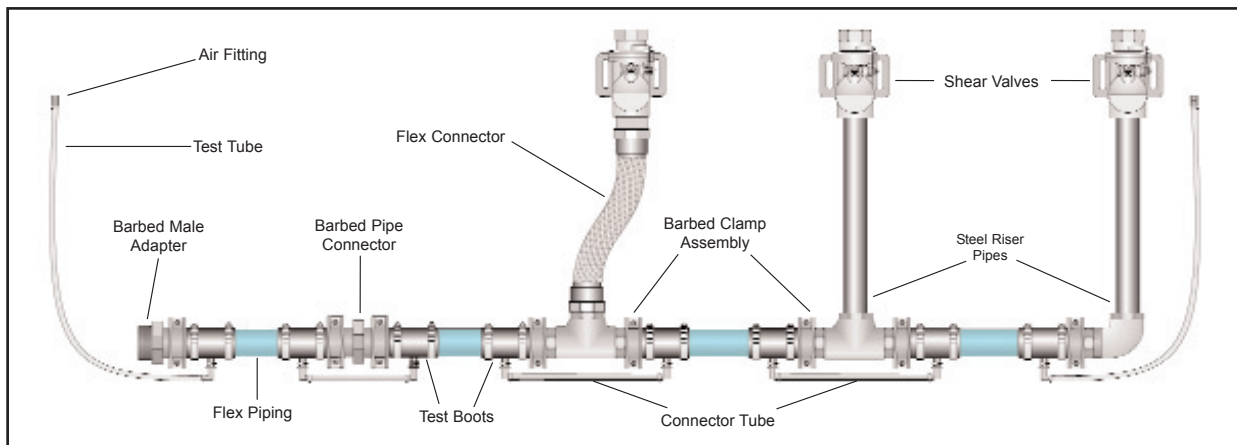


Clamp Assemblies

## Barbed Fittings

Barbed fittings offer a simple and effective means of interconnecting either single or double wall FlexWorks piping. The system does not use internally expanded couplings which require the use of the FlexWorks coupling machine. It consists of a barbed fitting and a stainless steel clamp.

Barbed fittings are of a single wall design and are used to interconnect FlexWorks piping. These UL listed steel couplings and fittings may not be direct buried and must be contained within containment sumps. Barbed fittings are single wall and require the use of rubber test boots to seal-off the interstitial space of the FlexWorks double wall flexible piping for testing and monitoring.





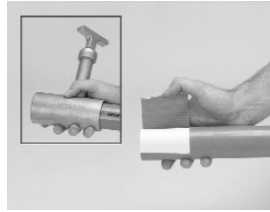
This piping connection system does not require the use of pipe couplings or the use of a coupling machine. When routed in series, FlexWorks flexible double wall piping applications should have the tee assemblies fitted with test boots and connector tubes to permit the interstitial space of the piping to bypass the single wall coupling and fitting.

## General Installation



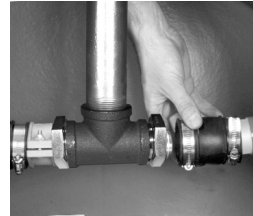
### Step 1

Cut the FlexWorks Pipe squarely to the desired length using the FlexWorks Pipe Cutter.



### Step 2

If using FlexWorks double wall piping, cut the jacket back 3" using the FlexWorks Jacket Cutter. The stop pin should be in the position furthest from the opening.



### Step 3

Insert the piping into the sump through the entry boot. Place the test boot over the end of the pipe.



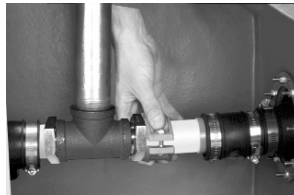
### Step 4

Place the clamp assembly loosely onto the pipe end until the pipe touches the clamp's interlock lip.



### Step 5

Slide the pipe onto the barbed end of the fitting until the pipe stops against the fitting's interlock shoulder.



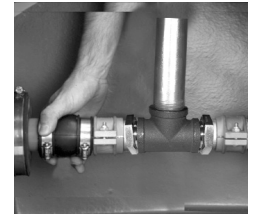
### Step 6

Position and press the clamp's inside shoulder into the groove of the fitting.



### Step 7

Alternately tighten the clamp fasteners until the clamp segments meet, being sure to keep the clamp segments parallel to each other.



### Step 8

Position test boot with outlet port facing down. Clamp one side on the primary pipe and the other on the blue secondary jacket.