

OPW Multi-Port Spill Containment Ordering Specifications



Bolt Down Model Number

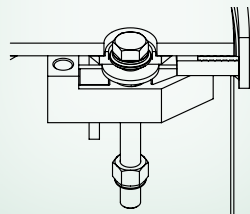
- 511EVR - HDPE Bellows, Thread-On Composite Base, Bolt-Down
- 561EVR - HDPE Bellows, Thread-On Cast Iron Base, Bolt-Down
- 411- HDPE Bellows, Slip-On Composite Base

Roto-Lock Model Number

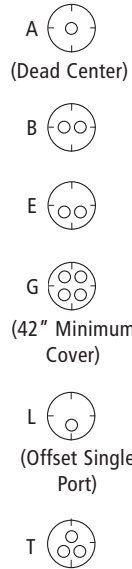
- 521EVR - HDPE Bellows, Thread-On Composite Base, Roto-Lock
- 571EVR - HDPE Bellows, Thread-On Cast Iron Base, Roto-Lock
- 421- HDPE Bellows, Slip-On Composite Base with Roto-Lock Fasteners

Optional Roto-Lock Fastener System

The OPW Roto-Lock system enables a secure raintight connection without the need to locate threaded bolt holes on the mounting ring.



Fill/Vapor Port Configurations



NOTE: 43 or 49 style Gauge Port must be used if a water shroud is to be used with L style

Replacement / Retrofit Manhole

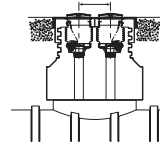
RP* - (No Ring / Skirt)
*RP cover orders must be accompanied by an up-to-date OPW field survey form.

Riser Spacing

- 00 - Single Port (A Configurations)
- 16 - 16" Centers
- 24 - 24" Centers (42" Minimum Cover)

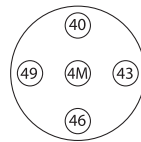


Riser Spacing



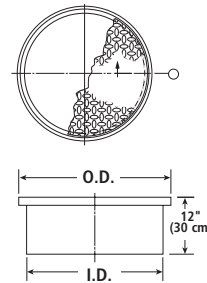
Gauge Port Location

- 00 - No Gauge Port
- 40 - Port at 12 o'clock
- 43 - Port at 3 o'clock
- 46 - Port at 6 o'clock
- 49 - Port at 9 o'clock
- 4M - Port in Center
- 7X - Flush Mount



Port Location Example

NOTE: 3M Style gauge port must be used with port in the center of "G" Style



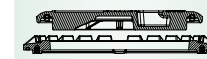
Dimensions

O.D.		I.D.		Thickness	
in.	cm	in.	cm	in.	cm
30	76	26 ⁵ / ₈	68	³ / ₈	0.952
37	94	34 ⁵ / ₈	88	³ / ₈	0.952
42	107	39 ⁵ / ₈	101	¹ / ₂	1.27
48	122	44 ⁵ / ₈	113	¹ / ₂	1.27

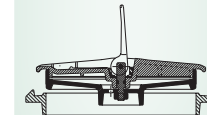
Manhole Cover Size*
30" (Configurations)
36 - 36" Retrofit Only
37 - 37"
39 - 39" Retrofit Only
42 - 42"
48 - 48"
* 42" is standard

Spill Container Cover Style**

- RT - Raintight
- SC - Sealable Cover
- 00 - No Ring or Cover



RT - Raintight

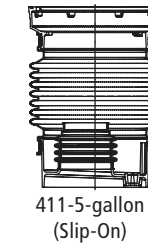


SC - Sealable Cover (Lid in open position)

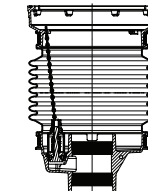
** Raintight cover is standard

Spill Container Capacity***

- 00 - No Containment
- 05 - 5-Gallon
- 15 - 15-Gallon
- *** 5-Gallon bucket is standard



411-5-gallon (Slip-On)



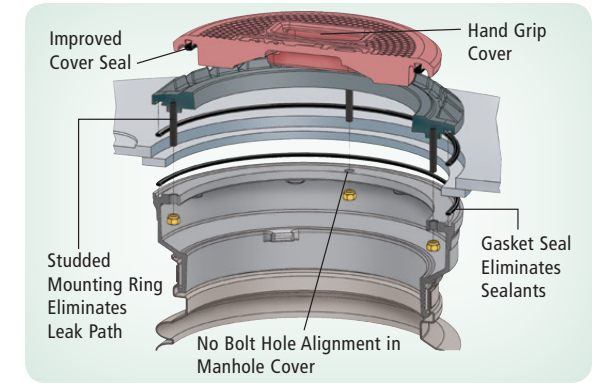
511-5-gallon (Thread-On)

Of Ports With Containment

- 0
- 1
- 2
- 3
- 4

Powder Coated Manhole Covers

- R - (1) Red
- (1) Orange
- W - (1) White
- (1) Orange
- Y - (1) Yellow



EVR Multi-Ports

Thread-On Spill Containers are available in composite or cast iron bases with either 5 or 15-gallon buckets. (1) Drain Valve Spill Bucket & (1) Plug Spill Bucket standard on Dual Ports. Drain Valve Spill Bucket standard on Single Port.