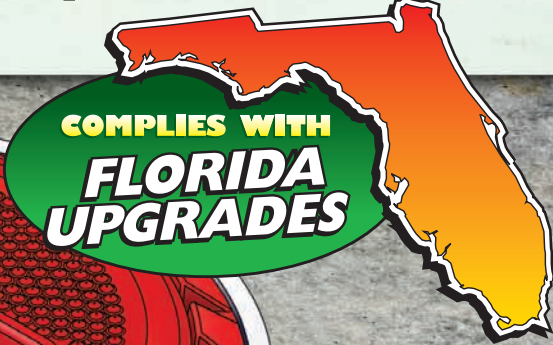


**NEW**

# OPW 7111SS

## Double Wall Stainless Steel Spill Container

Primary and Secondary  
Spill Buckets are  
Field Replaceable



# DUAL STAINLESS STEEL CONSTRUCTION

# OPW 711SS-CSDW DOUBLE WALL STAINLESS STEEL SPILL CONTAINER

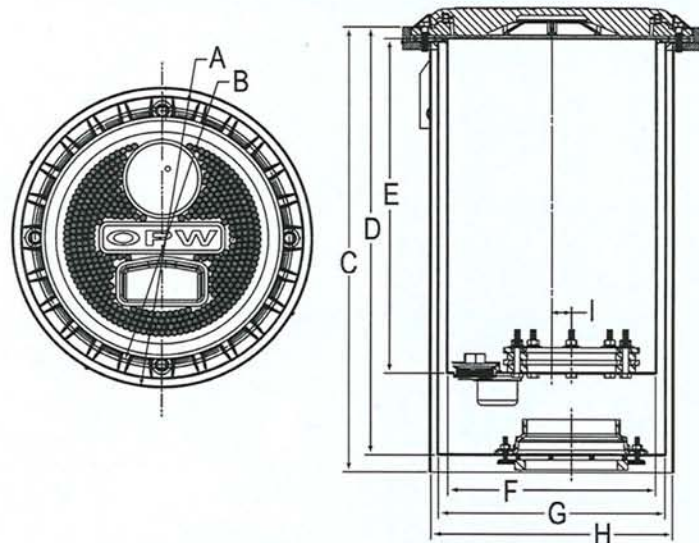
## FEATURES & BENEFITS

- **Primary and Secondary Spill Buckets** are completely field replaceable without needing to break concrete.
- **Shallow Bury Applications** – At only 21-3/4" deep with a 5-gallon capacity, this spill container is great for shallow bury applications.
- **Dual Stainless Steel Construction**
- **Flat-Wall Entry Fitting** – Allows for numerous installation possibilities. Designed for 3" or 4" entry fittings, field installed to desired depth.
- **Spill Bucket Cover** – Spacious hand-grip pocket provides easy access; new cover seal prevents water and debris from entering the bucket.
- **16" center-to-center spacing** – 1" per bucket offset from center on 15-1/8" cover allows for nearly 3" of concrete between 16" center of bucket.
- **Built-In Flex Joint** – Constructed with premium Pellethane fitting to allow for ground shift while keeping secondary bucket in place in the ground.
- **Monitoring Port** – Provides quick access to the secondary bucket for monitoring or testing.
- **Stainless Steel Secondary Containment** – Isolates the spill bucket and riser from backfill, preventing a product spill from entering the soil in the event of a damaged primary unit.
- **Powder Coated Galvanized Steel Skirt** – Isolates the spill bucket from backfill, allowing both primary and secondary to be field replaceable.

## MATERIALS

**Primary Spill Bucket: Stainless Steel**  
**Secondary Spill Bucket: Stainless Steel**  
**Entry Fitting: Pellethane**  
**Compression Seal: Nitrile**  
**Cover and Mounting Ring: Cast Iron, Powder Coated**  
**All Other Seals: Nitrile**  
**All Other Components: Stainless Steel**  
**Skirt: Powder Coated Galvanized Steel**

## DIMENSIONS



	inches	cm
A	15-1/8"	38.42
B	12-29/32"	32.78
C	22-5/8"	57.46
D	21-3/4"	55.25
E	17"	43.18
F	10-9/16"	26.83
G	11-1/2"	29.21
H	12-1/4"	31.12
I	1.0"	2.54

## ORDERING SPECIFICATIONS

Part Number	Description
7111SS-CSDW	5 Gallon Double Wall Stainless Steel Spill Container

**Note:** Consult OPW for continuous interstitial monitoring option.

## APPROVALS



ULC - MH27236



Florida EQ# 654

**IMPORTANT:** OPW/PISCES™ by OPW Inc. products must be used in compliance with applicable federal, state, provincial, and local laws and regulations. Product selection should be based on physical specifications and limitations, and compatibility with the environment and material to be handled. OPW/PISCES™ by OPW Inc. makes no warranty of fitness for a particular use. All illustrations and specifications in this literature are based on the latest production information available at the time of publication. Prices, materials, and specifications are subject to change at any time, and models may be discontinued at any time, in either case, without notice or obligation. For complete OPW warranty information visit our web site at [www.opw-fc.com](http://www.opw-fc.com).



North America Toll Free – TELEPHONE: (800) 422-2525 ♦ Fax: (800) 421-3297 ♦ Email: [domesticsales@opw-fc.com](mailto:domesticsales@opw-fc.com)  
 International – TELEPHONE: (513) 870-3315 or (513) 870-3261 ♦ Fax: (513) 870-3157 ♦ Email: [intlsales@opw-fc.com](mailto:intlsales@opw-fc.com)  
[www.opw-fc.com](http://www.opw-fc.com)

P.O. Box 405003 ♦ Cincinnati, OH 45240-5003 ♦ Printed in USA

© 2006, OPW Fueling Components. © 2006 Delaware Capital Formation, Inc. All Rights Reserved. DOVER and the DOVER logo are registered trademarks of Delaware Capital Formation, Inc., a wholly-owned subsidiary of Dover Corporation.

7111SS-10/06-3M