

Introducing the New "Protection Standard" in Emergency Shut-Off Valves

Now You Can Protect Your Customers, Investments and the Environment against the Perils of Undetected, Low-Impact Breaks

Why Specify Anything Else?

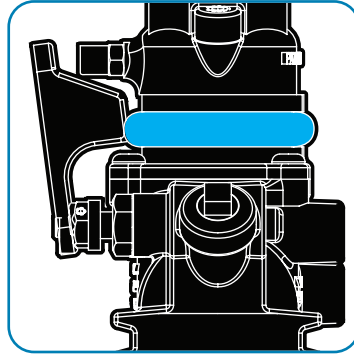
OPW raised the protection-standard in emergency valves when it introduced the first double poppet valve back in 1989. This industry-changing OPW innovation helped to *significantly reduce the risk of fire, explosion, personal injury, property damage and environmental contamination* at sites around the world. **Major oil companies and jobbers agreed that providing added protection for their customers, investments and the environment were the three most convincing reasons for switching to the innovative new valves.**

Those same reasons are still prevalent today and serve as the inspiration behind the design of the **New OPW 10 Plus Emergency Shut-Off Valve** - leading-edge innovation for today's safety conscious marketers and the new standard of protection in emergency shut-off valves. By eliminating the risks of low-impact breaks, the New 10 Plus offers a logical, simple and affordable way of providing an added level of security and peace-of-mind protection of customers, investments, and the environment. The new OPW 10 Plus is unlike any other emergency valve, featuring all the time-tested, reliable features of the 10 series plus:

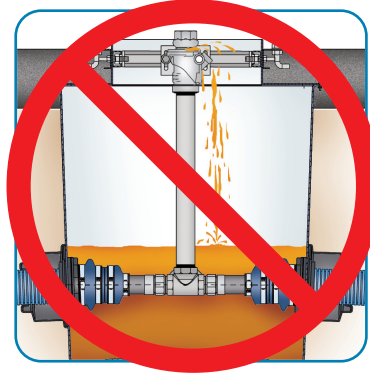
◆ Patent-Pending Smartguard™ Design

- Designed to contain a leak at the shear groove and activate the valve shut off mechanism in the event of an unsuspected low-impact fracture in the valve
- Designed to prevent fuel from leaking into sumps to significantly reduce the risk of environmental contamination and sump fires
- Designed to eliminate hazardous and costly clean-up due to fractured valves leaking at the shear groove

UNPRECEDENTED PROTECTION AGAINST LOW-IMPACT BREAKS



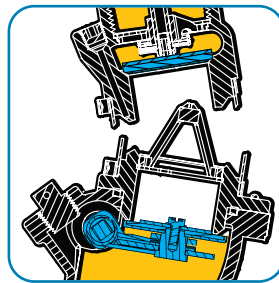
OPW 10 Plus



The New OPW 10 Plus is the Only Emergency Shut-Off Valve in the Industry Designed to Contain a Shear Groove Leak and Close the Flow of Fuel In the Event of an Undetected Low-Impact Break

- Provides peace-of-mind comfort that an unnecessary leak risk at your site has been eliminated
- Eliminates health, environmental contamination and fire hazards that could result from fractured valves leaking into sumps
- Prevents undetected product loss
- Prevents hazardous and costly clean-up

TIME-TESTED, FIELD-PROVEN SHUT-OFF RELIABILITY



OPW 10 Plus



The New OPW 10 Plus is Built Upon the Design Platform of the World's Most Specified Emergency Shut-Off Valve, the OPW 10 Series.

- Unique Linkage Arm is designed to close the poppet in the event of impact, ground shift, earthquake or when activated by the SmartGuard™ as a result of a leak caused by an undetected shear groove fracture
- Double poppet design helps to provide for a safer environment in the event of a shear and fire

THE INDUSTRY'S BEST DETERRENT AGAINST SUMP FIRES



- The OPW 10 Plus is designed to contain fuel leaking from fractured shear grooves to significantly reduce the risk of sump fires
- In the event of a sump fire, the 10 Plus fusible link will release and automatically close the valve to reduce the fire hazard