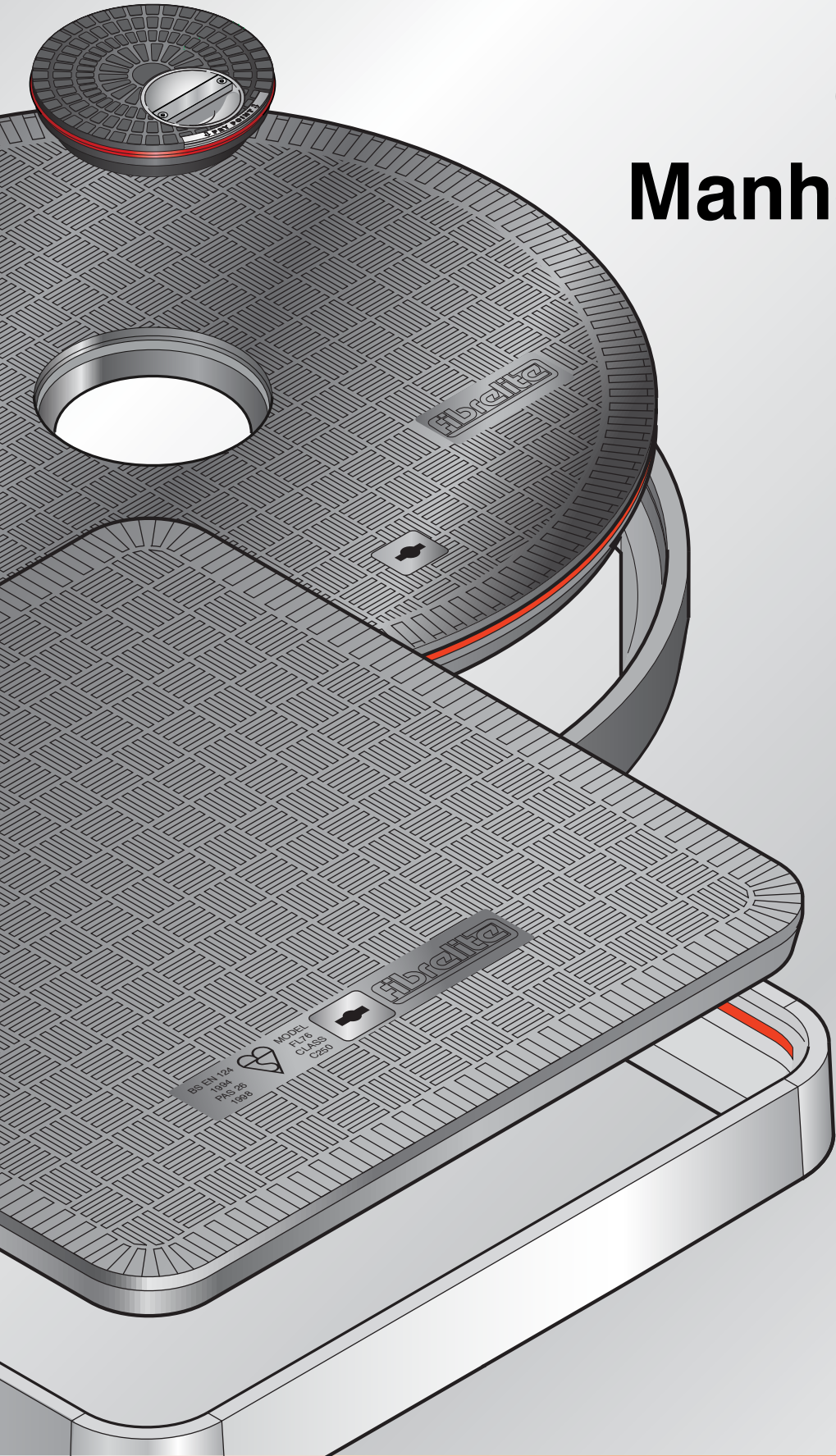


Composite Manhole Covers



Shaping future standards

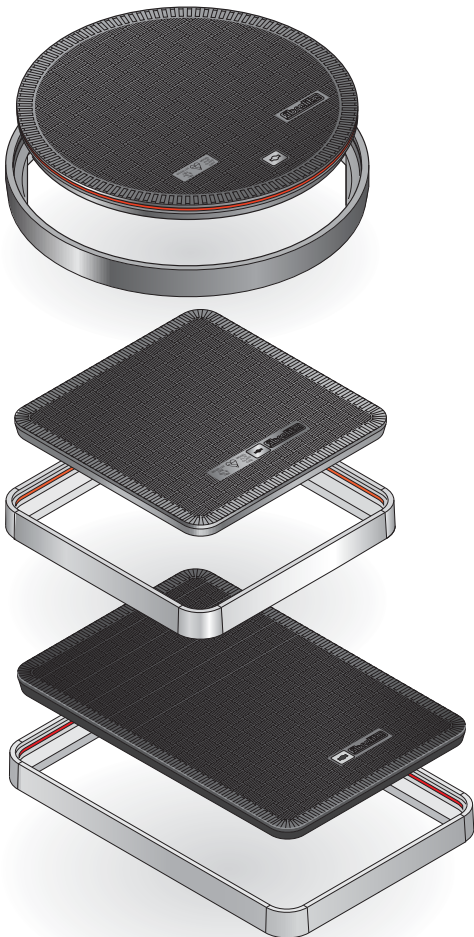
One Superior Standard - No cracking, no delaminating, slip resistant, they will not spin out and have 'injury

Watertight Flat Sealed Covers

The leading watertight, easy to remove, non-bolting composite manhole cover on the market is available in a range of sizes and load ratings. FL90, FL100 & FL76 are suitable for tank sump access.

The smaller covers are suitable for direct fill, remote fill, manual dip, monitoring well & drawpit access.

Locks available. Standard covers are designed to meet and exceed the C250 (25 ton) load rating.



Product Code Description

FL100	1020mm dia. flat sealed cover & composite frame
FL100/D400*	1020mm dia. flat sealed cover & composite frame
FL90	900mm dia. flat sealed cover & composite frame
FL90/D400*	900mm dia. flat sealed cover & composite frame
FL760	760mm dia. flat sealed cover & composite frame
FL760/D400*	760mm dia. flat sealed cover & composite frame
FL600	600mm dia. flat sealed cover & composite frame
FL600/D400*	600mm dia. flat sealed cover & composite frame
FL180	450mm dia. flat sealed cover & composite frame
FL180/D400*	450mm dia. flat sealed cover & composite frame
FL120	300mm dia. flat sealed cover & composite frame
FL120/MW	300mm dia flat sealed cover & composite frame with monitoring well ID plate
FL120/GP	300mm dia flat sealed cover & composite frame with grounding point ID plate

* D400 denotes 40 ton load rating

Product Code Description

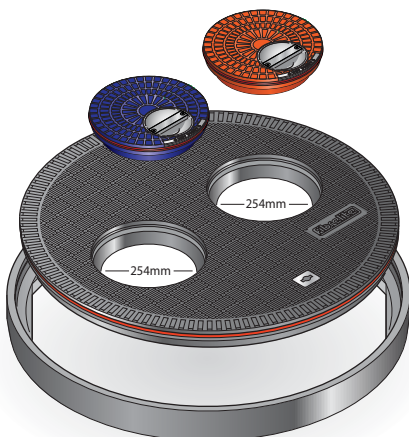
FL140	1400 x 700mm flat sealed cover & aluminium frame
FL140/D400*	1400 x 700mm flat sealed cover & aluminium frame
FL900	900 x 900mm flat sealed cover & aluminium frame
FL900/D400*	900 x 900mm flat sealed cover & aluminium frame
FL96	900 x 600mm flat sealed cover & aluminium frame
FL96/D400*	900 x 600mm flat sealed cover & aluminium frame
FL76	760 x 760mm flat sealed cover & aluminium frame
FL76/D400*	760 x 760mm flat sealed cover & aluminium frame
FL60	600 x 600mm flat sealed cover & aluminium frame
FL60/D400*	600 x 600mm flat sealed cover & aluminium frame
FL450	450 x 450mm flat sealed cover & aluminium frame

* D400 denotes 40 ton load rating

Multi-Port Covers

A break-through in composite technology enabled the launch of our new premium range of multi-port covers.

Our lightweight composite, non-bolting covers, include two ports to give direct access to fill and vapor recovery or dip risers inside the tank sump. Ports are located at 406mm centres. Fill caps can be colour coded to identify the fuel grade and can be attached with a chain to prevent incorrect fuel drops into the tank. Additional product ID plates can be fixed to the main cover. Designed and tested to meet and exceed the C250 (25 ton) load rating.



Product Code Description

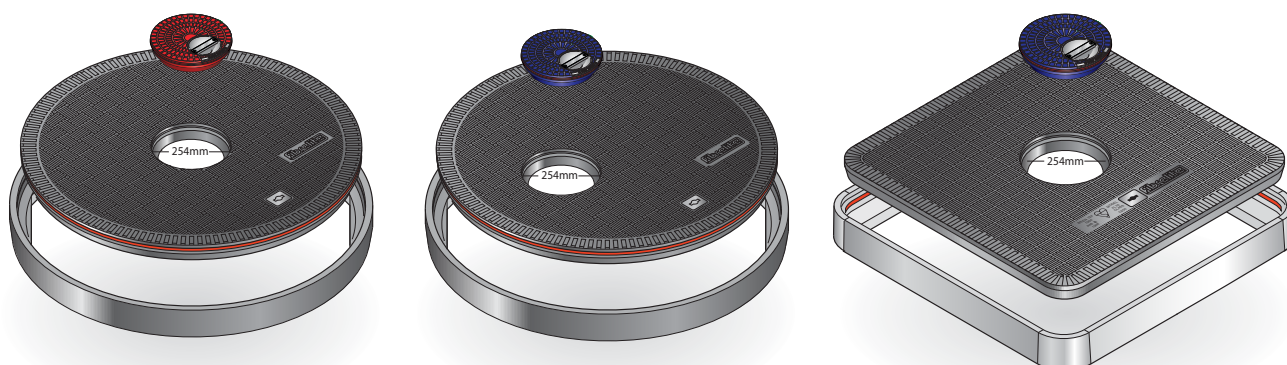
FL100/MP	1020mm dia. flat sealed multi-port cover and composite frame
FL90/MP	900mm dia. flat sealed multi-port cover and composite frame

ation, no deflection or permanent set, anti-static, free' single person ergonomic removal

Manual Dip Port Covers

Designed for quick and easy access to a manual dip stick located inside a tank sump, the FL90 central and offset dip covers offer the perfect solution.

Our lightweight composite, non-bolting covers have an integral seal on both the main cover and dip cap. Dip caps can be colour coded to the fuel grade and can be chained to the main cover for added security. Standard covers are designed to meet and exceed the C250 (25 ton) load rating.



Product Code	Description	Product Code	Description
FL90/CD	900mm dia. cover with centre dip port	FL90/OD	900mm dia. cover with offset dip port
FL90/CD/D400*	900mm dia. cover with centre dip port	FL90/OD/D400*	900mm dia. cover with offset dip port
FL76/CD	760mm square cover with central dip port	FL76/CD/D400*	760mm square cover with central dip port

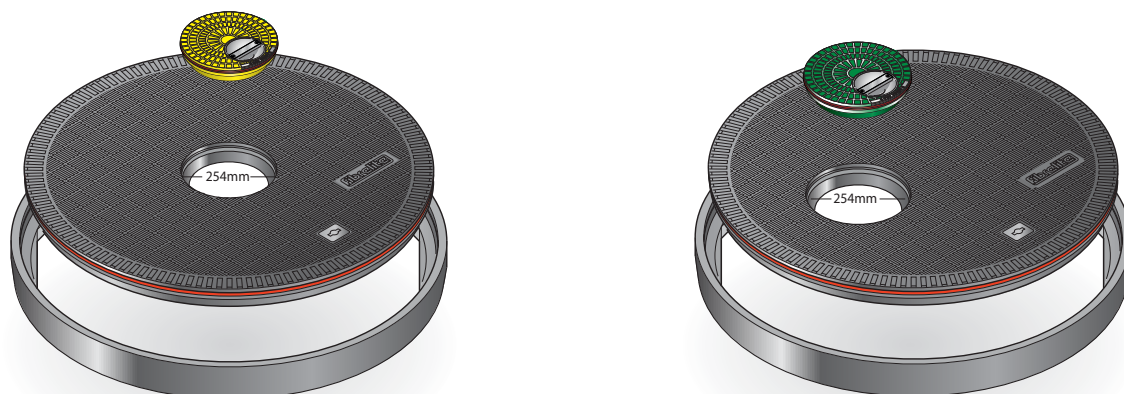
* D400 denotes 40 ton load rating

Single Fill Port Covers

Our new range of fill port covers are designed with only one hole, for access to one fill riser. The port is located in a central or offset position and the port cover can be colour coded to identify the fuel grade.

The port cover can be attached with a chain to prevent incorrect fuel drops into the tank. Additional product ID plates can be fixed to the main cover. Hole position varies on each size of cover.

Standard covers are designed to meet and exceed the C250 (25 ton) load rating.



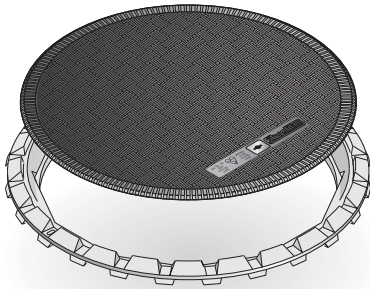
Product Code	Description	Product Code	Description
FL90/CF	900mm dia. cover with centre fill port	FL90/OF	900mm dia. cover with offset fill port
FL90/CF/D400*	900mm dia. cover with centre fill port	FL90/OF/D400*	900mm dia. cover with offset fill port
FL100/CF	1020mm dia. cover with centre fill port	FL100/OF	1020mm dia. cover the offset fill port

* D400 denotes 40 ton load rating

Raised Covers

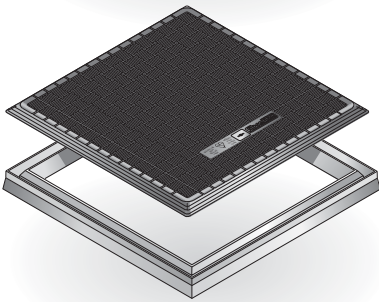
The original raised cover is designed with a simple water check in the frame, to keep rainwater out of the installation. This cover is not sealed, so excess surface water can drain into the ground between the skirt and sump.

Still an award winning design, this cover range offers a cost effective solution for all sump access installations. Locks available. FL10, FL36 & FL42 are designed to cover tank sumps. Small covers can be used for a range of applications. Covers are designed to meet and exceed the C250 (25 ton) load rating.



Product Code Description

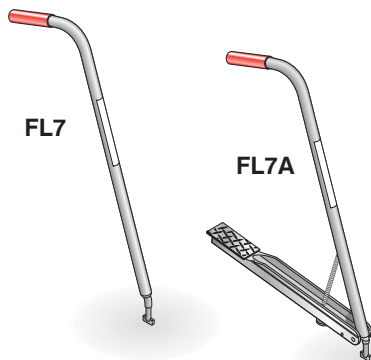
FL42	1075mm dia. raintight raised cover & aluminium frame
FL36	900mm dia. raintight raised cover & aluminium frame
FL12	300mm dia. raintight raised cover & aluminium frame



Product Code Description

FL10	766 x 766mm raintight raised cover & aluminium frame
FL1	600 x 600mm raintight raised cover & aluminium frame
FL3	600 x 766mm raintight raised cover & aluminium frame
FL45	450 x 450mm raintight raised cover & aluminium frame

Lifting Handles



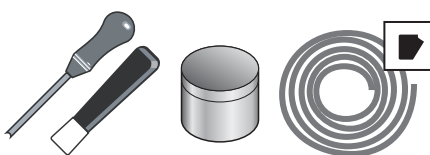
FL7A/ENCL



Product Code Description

FL7	To easily & safely remove & replace raised covers and flat covers with no seal
FL7A	With foot lever designed to break the seal on watertight flat sealed covers. It can be used to remove all types of Fibrelite covers
FL7A/ENCL	910 x 362mm lockable cabinet to house 2 FL7A lifting handles (handles not included)

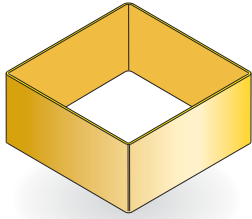
Replacement Cover Seal Kits



Model	Description	Model	Description
FL100/SRK	FL100 cover seal kit	FL140/SRK	FL140 frame seal kit
FL90/SRK	FL90 cover seal kit	FL96/SRK	FL96 frame seal kit
FL760/SRK	FL760 cover seal kit	FL900/SRK	FL900 frame seal kit
FL600/SRK	FL600 cover seal kit	FL76/SRK	FL76 frame seal kit
FL180/SRK	FL180 cover seal kit	FL60/SRK	FL60 frame seal kit
FL120/SRK	FL120 cover seal kit	FL450/SRK	FL450 frame seal kit
FC254/SEAL	FC254 dip/fill cover seal kit		

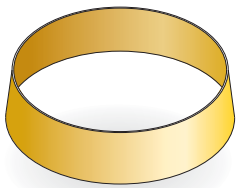
GRP Skirts

GRP skirts are manufactured using high technology RTM production methods, to create a one piece moulded, smooth finish skirt. Skirts are supplied with a bonding sealant to create a watertight seal with the frame. The strong non-corrosive structure provides an excellent surface to support concrete.



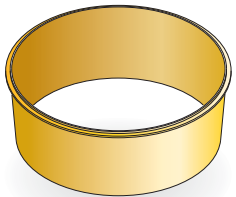
To fit square and rectangular covers

Model	Description
FL140/SK300	300mm deep skirt to fit FL140
FL96/SK300	275mm deep skirt to fit FL96
FL900/SK300	275mm deep skirt to fit FL900
FL10/76/SK300	278mm deep straight skirt to fit FL10 & FL76
FL60/SK250	254mm deep straight skirt to fit FL60
FL450/SK300	300mm deep straight skirt to fit FL450

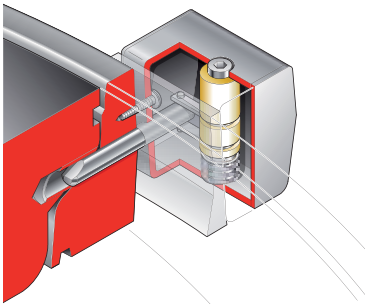


To fit round covers

Model	Description
Flared Skirts	
FL42/SK250	257mm deep skirt to fit FL42
FL100/SK250	254mm deep skirt to fit FL100
FL90/SK250	252mm deep skirt to fit FL90
FL36/SK300	322mm deep skirt to fit FL36
FL36/SK250	258mm deep skirt to fit FL36
FL760/SK300	300mm deep skirt to fit FL760
Straight Skirts	
FL100/SK300	300mm deep skirt to fit FL100
FL36/90/SK400	430mm deep skirt to fit both FL36 and FL90
FL90/SK300	300mm deep skirt to fit FL90
FL600/SK300	300mm deep skirt to fit FL600
FL180/SK300	300mm deep skirt to fit FL180
FL120/SK300	290mm deep skirt to fit FL120
FL12/SK300	300mm deep skirt to fit FL12



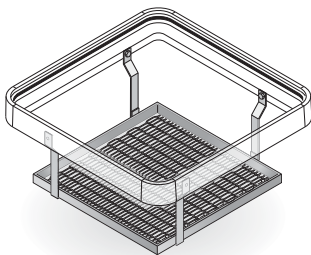
Cover/Frame Locks



Product Code	Description
FIB/L	Lock to fit FL1, FL3, FL10 covers
FIB/RL	Lock to fit FL12, FL36, FL42 covers
FIB45/L	Lock to fit FL45 cover
FIB76/L	Lock to fit FL450, FL60, FL76, FL900, FL96 & FL140 covers For FL140 two locks are required.
FIB90/L	Lock to fit FL120, FL180, FL600, FL760, FL90 & FL100 covers

Safety Platforms

Metal grid safety platform complete with fixing brackets to fit a frame.



Model	Description	Model	Description
FL6AN	fits FL1 frame	FL6EN	fits FL60 frame
FL6BN	fits FL3 frame	FL6FN	fits FL36 frame
FL6CN	fits FL10 frame	FL6GN	fits FL140 frame
FL6DN	fits FL76 frame	FL6HN	fits FL42 frame

The Fibrelite global client list who will only use Fibrelite continues to grow. They recognise that Fibrelite is the best long term investment at a competitive price. Our covers offer tremendous advantages of innovative design and high quality over other "wanabee" composite and steel products. Manufacturing conforms with ISO 9001:2008 standards. All covers are designed to a minimum criteria of EN 124-C250 standard.



KM 40638

Fibrelite's commitment towards maintaining the highest possible standards

Fibrelite's FL76 & FL90 covers have been accredited with the BSI kitemark. This is your assurance that samples are regularly subjected to rigorous, independent testing to ensure that they comply with stringent standards for safety, product performance, or reliability. In addition, the Kitemark also means that the quality systems of the factory where this Fibrelite cover was made are systematically assessed. The Kitemark is therefore Fibrelite's commitment towards maintaining the highest possible standards.



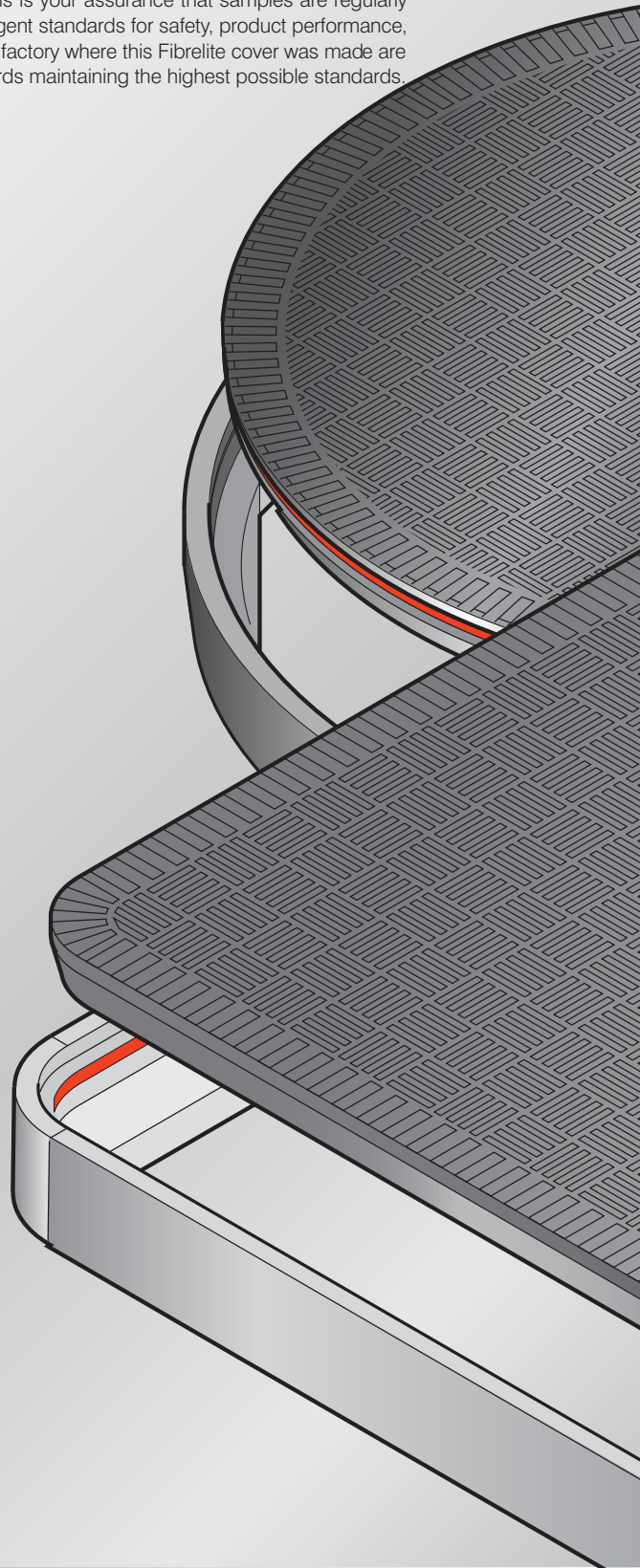
Fibresec
GROUP
COMPANY



FM 37923



Distributor Contact Details



FIBRELITE

UK Office:

Snaygill Industrial Estate, Keighley Road, Skipton, North Yorkshire, BD23 2QR, UK
Tel: +44 (0)1756 799773, Fax: +44 (0)1756 799539,
E-mail: covers@fibrelite.com, Website: www.fibrelite.com

US Office:

3250 US 70 Business West, Smithfield, NC 27577, USA
Tel: + 1 800 422 2525 Fax: +1 800 421 3297
E-mail: covers@fibrelite.com