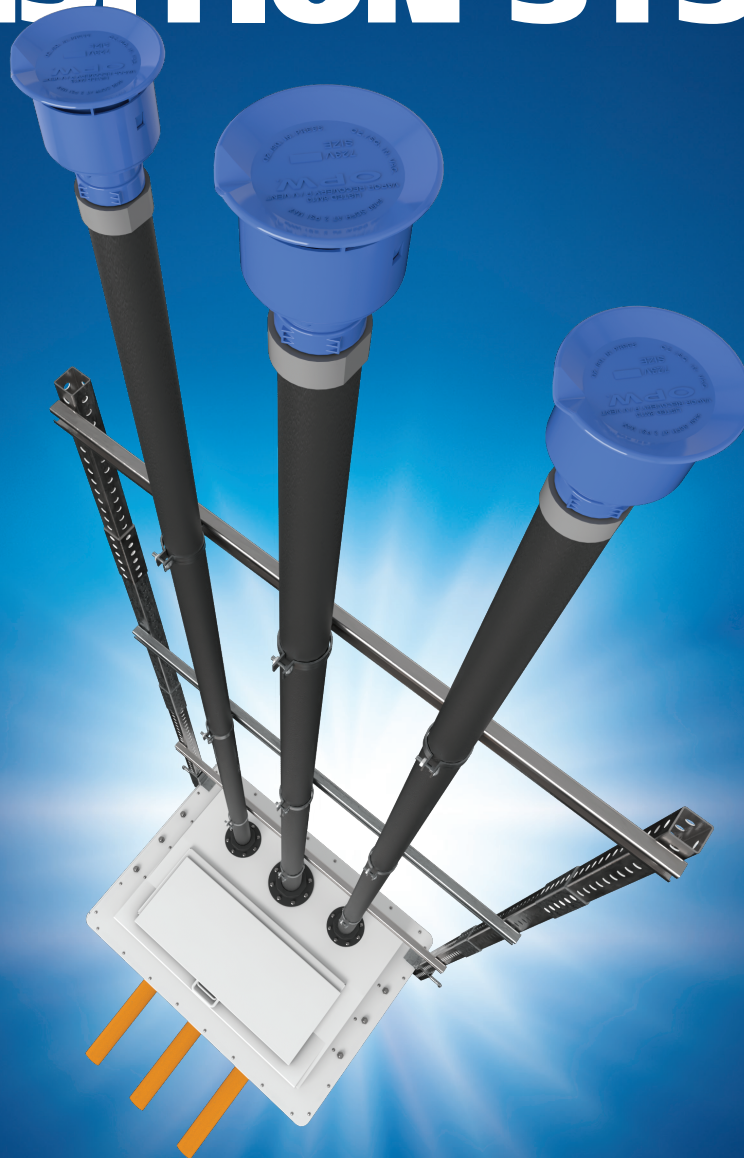


OPW VENT TRANSITION SYSTEM



Customizable



Superior Quality



Faster Installs

OPW 
RETAIL FUELING
a **DOVER** company

LEARN MORE. VISIT US AT:
opwglobal.com/opw-retail-fueling

THE BEST SOLUTION FOR

VSE Vent Transition Sump

The primary component to OPW's Vent Transition System is the new VSE Vent Transition Sump. The VSE is an at-grade system that utilizes a fiberglass base with a powder-coated steel top.

Vent Stack Entries

Rigid Entry Fittings (REF) are included for the top's pre-cut vent stack entries. Additionally, UV/weather-resistant caps are provided for protecting the REF fittings. A vent stack rack system is available in units of 4ft up to 12ft total.

Tops

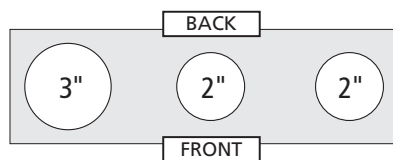
Laser-cut tops feature a lockable access hatch along with tested water-shedding capability. The finish allows for less heat absorption and long-lasting performance. Tops are customizable, arriving with vent stack entries pre-cut.

Base

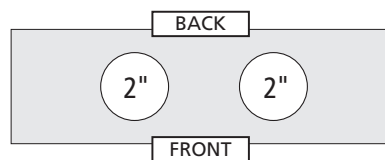
The Fiberglass DSE Base is made using advanced composite technology, providing smooth surfaces on both sides of the sump walls. This creates consistent thickness and shape for strong bonds with entry fittings.

Part Number Configuration Guide

VSE - _ _ _ _ Dashes represent number of vent entry stacks up to (4) 2-inch entries and (3) 3-inch entries.



Example A: VSE-322 = (3) entries total. (1) 3" diameter and (2) 2" diameter



Example B: VSE-22 = (2) entries total, both 2" diameter

Transition Sump Configuration:



EVERY VENT TRANSITION

OPW FlexWorks Vent Pipe

OPW Double-Wall Vent Piping is a new alternative to FRP vent pipe that is more flexible, lighter, and easier to install.

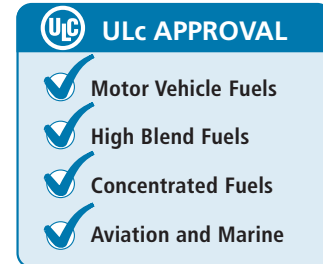
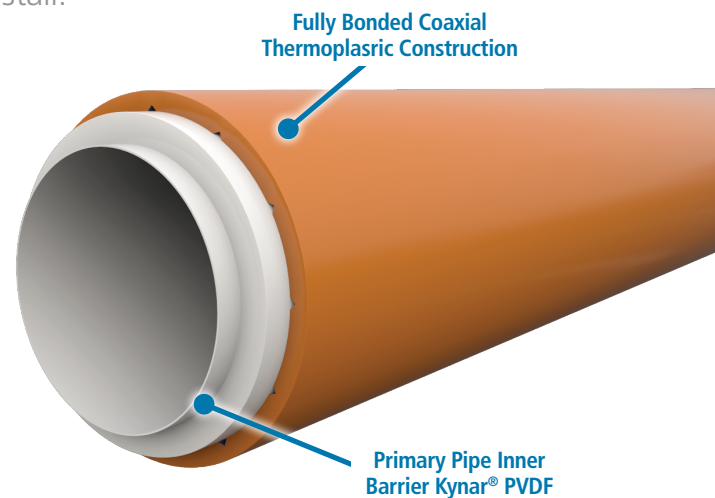
- Available in 2 and 3 inch

Eliminate Potential Underground Leak Points

- Continuous piping runs between tank and vent stacks
- No hand-built field joints
- Stainless-steel fittings for worry-free corrosion resistance
- Used with either OPW DPC swage-on or SBC bolt-on double-wall couplings

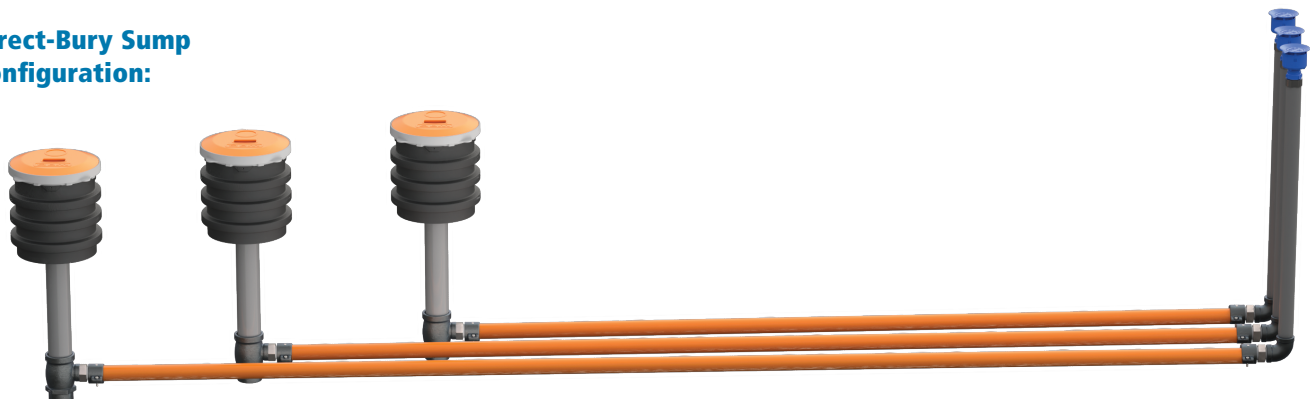
Features

- **Fast and easy installation** - results in less installation labor, time and cost
- **Eliminates burdensome** cutting, fitting, cleaning, gluing or welding
- **No adhesives**, heat assists, curing problems or electrofusion welding at joints
- **Easy to bend** - no special fittings to install in order to make bends
- **Vent Pipe Kit** to seal off interstitial testing port when directly burying double wall fittings



ULc Approved for Venting with All Fuels

Direct-Bury Sump Configuration:



OPW Vent Transition System

For superior performance, cost savings, and enhanced efficiency of installs, OPW now offers a selection of products to create a Vent Transition System. Customers may choose to include these products as part of their VSE vent sump installation.

Pressure Vacuum Vents:

OPW 623V and 723V (CARB EVR) installed at the top of vent pipe stacks protect from intrusion. A closed poppet opens at a pre-determined pressure to allow the tank to vent.

Vent Stack Modular Rack System:

Galvanized steel components to protect against rust/corrosion.

Available in e-coated Black

Increments of 4 ft each up to 12 ft in total.

VSR-4: 4ft VSR-8: 8ft VSR-12: 12ft

VSR-4B: 4ft Black VSR-8B: 8ft Black VSR-12B: 12ft Black

VSE Vent Transition Sump:

Fiberglass base with configurable, laser-cut steel top that is powder-coated for durability. An at-grade system with lockable access hatch and water-shedding capabilities. Rigid Entry Fittings (REF) and UV/ weather protection caps included for vent stack installation.

Entry Fittings, Pipe

Couplings and Components:

Complete the OPW Vent transition system with compatible entry fittings into the sump base, pipe couplings for vent pipe, and elbows from piping to vent stacks.

OPW FlexWorks Vent Pipe:

Fast, simple installation helps decrease labor costs. Less potential for underground leak points with continuous piping runs and no hand-built field joints. Available in 2" or 3".

Using OPW Flexible Vent Pipe over FRP vent pipe avoids the use and additional cost of flex connectors inside the sump.



**Shown with
Black E-Coated
Vent Stack Rack*

Ordering specifications - Sizing Matrix

Part #	Description	Packaged
V20-150	2" Double-Wall Vent Pipe	150 ft-Reel
V20-250	2" Double-Wall Vent Pipe	250 ft-Reel
V20-500	2" Double-Wall Vent Pipe	500 ft-Reel
V20-750	2" Double-Wall Vent Pipe	750 ft-Reel
V30-125	3" Double-Wall Vent Pipe	125 ft-Reel
V30-250	3" Double-Wall Vent Pipe	250 ft-Reel
V30-500	3" Double-Wall Vent Pipe	500 ft-Reel

Accessories	
Pipe Couplings	DPC-2200A 2" Double-Wall Swivel Pipe Coupling, Flat Gasket SBC-2020
	DPC-2300A 3" Double-Wall Swivel Pipe Coupling, Flat Gasket BMA-3030 3" Barbed Male Adaptor
Entry Fittings (OPW Vent Pipe into Sump)	REF-0200 2" Entry Fitting HEF-6030 3" Entry fitting EBF-0300 3" Entry Boot Fitting for 3" DW FlexWorks Pipe or 3" Rigid Pipe/LCX
Elbows	SEF-2020 2" Elbow, 2" Female NPT to 2" Male NPSH SEF-3030 3" Elbow, 3" NPSH x 3" NPT
VP-KIT	1/8" NPT Stainless Steel Plug Kit (8) per kit