

OPW E-SERIES CONTAINMENT SUMPS



 **Premium
Quality**

 **Fastest
Lead Times**

 **Extraordinary
Value**

OPW 
RETAIL FUELING
a **DOVER** company

LEARN MORE. VISIT US AT [OPWRetailFueling.com](https://www.OPWRetailFueling.com)

State-of-the-Art Innovation that Will Blow Your Mind but Not Your Budget

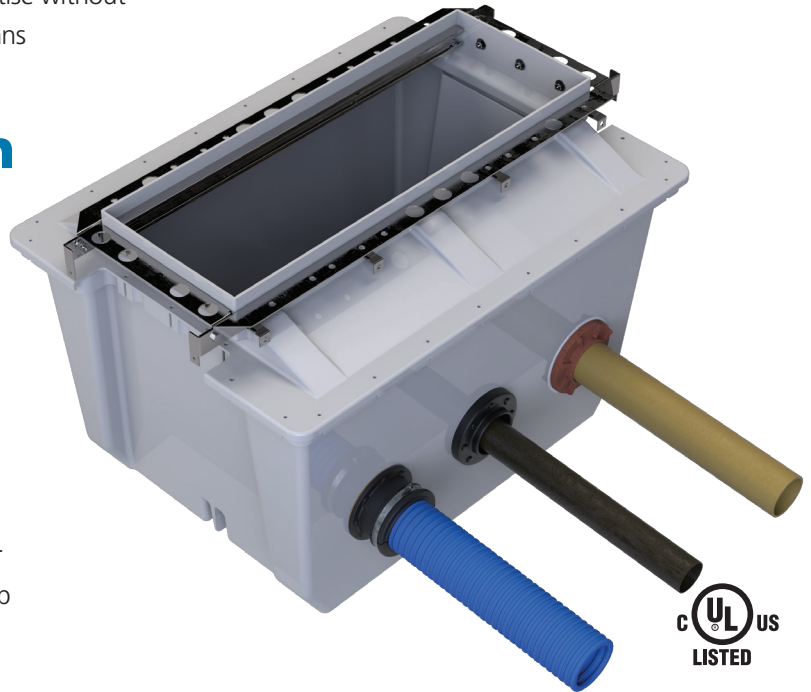
OPW brings you a new dispenser sump that delivers cost-effective peace of mind for retail fueling operators. The innovative DSE combines superior design, premium materials and world-class manufacturing expertise without breaking the bank, and its fast, reliable construction means it's ready to slot into your station right away.

Stamped to Perfection

For consistent quality and premium construction of finished tank parts, OPW utilizes our sheet molded compound (SMC) technology to build exact replicas of DSE dispenser pumps and TSE tank sumps.

Our SMC process first creates a high-strength, glass-reinforced thermoset moulded compound, which eliminates variance from spray-up fiberglass.

The reinforced material is then stamped into the finished product, which is smooth on all sides, inherently stronger and conveniently stackable to maximize space in the shop or on-site. Each piece is tested to strict quality standards before shipping, and it installs quickly and easily.

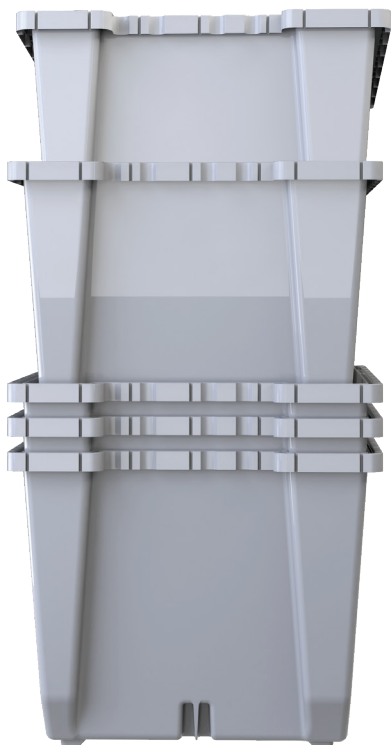


Any Pipe, Any Fittings

DSE Dispenser Sumps fit into your existing dispensing network with ease. The sump base is designed to create strong bonds with fiberglass and flexible pipe and fittings.

Nothing Else Stacks Up... or Unstacks as Easily!

While some dispenser sumps are bulky and hard to store, the DSE is designed to stack to make storage simple. The DSE's universal base is sized to nest perfectly inside itself, while the feet and specialized grooves help it to unstack with ease.



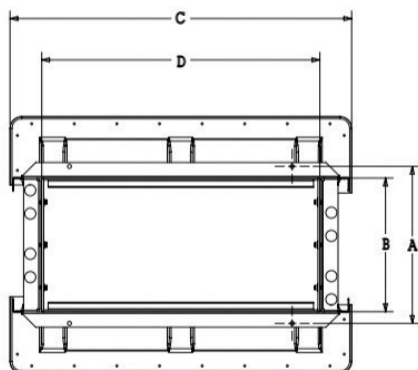
DSE Dispenser Sump

OPW brings you a dispenser sump that delivers cost-effective peace of mind for retail-fueling operators. The DSE is an efficient sump, manufactured with premium materials and designed for quick, easy installation.

Stacked with Features

DSE Dispenser Sumps fit into your existing dispensing network with ease. The smooth walls of the sump base create strong bonds with fiberglass and flexible pipe and fittings. The DSE's design allows for perfect nesting and stacking for convenient, space-saving access.

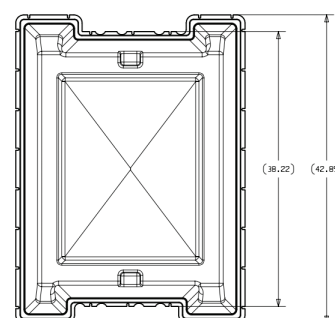
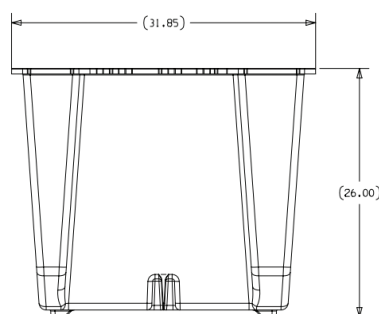
- ◆ Provides dependable quality each and every time with consistent wall thickness, material blend, sump shape and detail
- ◆ Shortest lead-time of any fiberglass sump in the industry; best value for the price on the market
- ◆ Maximizes distributor warehouse, construction trailer and jobsite space; lowers shipping costs
- ◆ Enhanced leak-resistant sealing surface for all types of fittings
- ◆ Reduces distributor inventory and improves ease of ordering; all sump models are conduitless with wide access
- ◆ Legendary OPW quality, service, support and value



One Base – Five Top Adaptors

Part Number	Description	
DSE-BASE	Description: DSE Universal Base. Combines with any DSE top	Stabilizer Bar Kits*
DSE-1836 DSE-TOP-1836	DSE Base + Gilbarco Encore Top Gilbarco Encore Top	SBK-1800
DSE-1543 DSE-TOP-1543	DSE Base + Wayne Ovation Top Wayne Ovation Top	SBK-1500
DSE-1741 DSE-TOP-1741	DSE Base + Wayne Helix Wide (5000) Top Wayne Helix Wide (5000) Top	SBK-1700
DSE-1524 DSE-TOP-1524	DSE Base + Gasboy Atlas X Top Gasboy Atlas X Top	SBK-1500
DSE-1928 DSE-TOP-1928	DSE Base + Wayne Select or Helix Narrow (2000/4000) Top Wayne Select or Helix Narrow (2000/4000) Top	SBK-1500

*Stabilizer Bar Kits purchased separately



Top Adaptor Dimensions

Sump Model Number	Dimensions							
	A		B		C		D	
	in.	cm	in.	cm	in.	cm	in.	cm
DSE-TOP-1836	20.22	51.36	17.20	43.69	44.11	112.04	35.90	91.19
DSE-TOP-1543	17.18	43.64	14.60	37.08	45.90	116.59	38.90	98.81
DSE-TOP-1741	18.50	46.99	16.70	42.42	44.20	112.27	38.10	96.77
DSE-TOP-1928	18.70	47.50	14.60	37.08	44.20	112.27	25.90	65.79
DSE-TOP-1524	16.70	42.42	14.60	37.08	44.20	112.27	24.00	60.96

Pre-Plumbed DSE Dispenser Sump

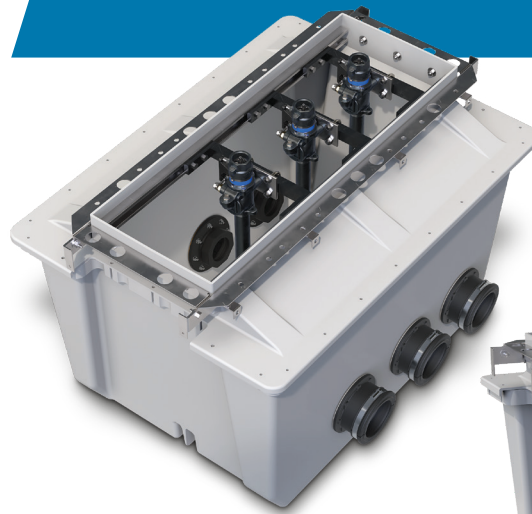
Utilizing the quality and value of the DSE Dispenser Sump, OPW now offers a Pre-Plumbed DSE for customers who wish to save time and costs of installation.

Complete with factory-assembled and tested components, the Pre-Plumbed DSE continues the OPW E-Series tradition of superior design, materials and affordability. The OPW Loop System® without the “loop”.

All elbows, tees and rigid NPT pipe nipples are e-coated for superior protection and performance.

The Pre-Plumbed DSE Ships Installed with the Following Items:

- ◆ Tops (Wayne Ovation or Gilbarco Encore)
- ◆ Pipe Entry Fittings
- ◆ Stabilizer Bars
- ◆ OPW 10 Plus Double-Poppet Emergency Shear Valves
- ◆ Flex Connectors or Rigid Risers (NPT Pipe Nipples)
- ◆ Elbows/Tees (DPC or SBC compatible)

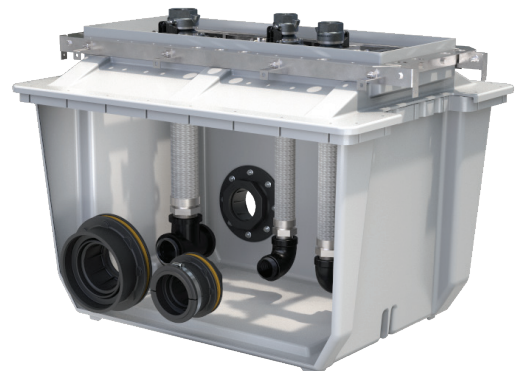


Features & Benefits:

- ◆ **Quality Components Factory-Installed** – pre-plumbed dispenser sump provides convenience and installation cost/time savings
- ◆ **Piece-of-Mind Installation** – components are factory installed and tested in a controlled environment eliminating potential costly installation errors in the field
- ◆ **Advanced Composite Technology** – premium construction of a robust fiberglass product with smooth surfaces on both sides of the sump walls and consistent thickness, blend and shape for strong bonds with entry fittings
- ◆ **Customizable** – choose your configuration by dispenser type, entry fittings, traditional or renewable shear valves, flex connector or rigid riser, and pipe coupling type
- ◆ **Efficient Manufacturing and Fast Lead Times** – provides best-in-class quality and value shipped quickly
- ◆ **Loop System Advantages** – all the features and benefits of the legendary OPW Loop System for jurisdictions that still require piping slope back to the tank

HiFlo Pre-Plumbed DSE Dispenser Sump

Built on the foundation of the Pre-Plumbed DSE Dispenser Sump, the new HiFlo Pre-Plumbed DSE Dispenser Sump has been designed to provide another option that can help site operators lower labor costs while reducing the risk of errors occurring in the field. Specifically, the HiFlo Pre-Plumbed DSE sump is ideal for use at fueling sites that cater to vehicles that require large fueling volumes, such as truck stops and hybrid convenience stores with truck-fueling lanes. The HiFlo Pre-Plumbed DSE sump is shipped to the installation site with factory-assembled and tested components, which optimizes installation time and cost, lessens site downtime and helps to ensure leak-free performance.



Features & Benefits:

- ◆ Compatible with Gilbarco Encore or Wayne Ovation dispensers
- ◆ Ability to use DPC or SBC pipe couplings
- ◆ Available with 2" or 3" trunk lines
- ◆ 2" satellite lines with Rigid Entry Fittings (REF)
- ◆ 10 Plus Emergency Shear Valves available in standard or renewable-fuel models
- ◆ Pre-assembled with flex connectors for ease of installation

TSE Tank Sump

Using the same innovative Advanced Composite Technology as the DSE, OPW is proud to introduce the TSE Tank Sump. The industry's first all fiberglass/composite containment system utilizing sheet molded compounds (SMC) to create a high-quality solution that quickly creates cost-effective peace of mind for retail petroleum operators.

Materials:

- Body:** Fiberglass
- Cover/Lid:** Fiberglass
- Watertight Seal:** Stainless-Steel/Nitrile
- Compression Seal:** Nitrile

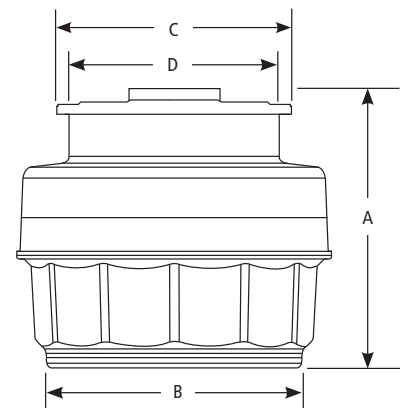


Smooth Sides, Inside and Out

As the only manufacturer in the industry using Advanced Composite Technology, OPW's E-Series are the only fiberglass sumps with smooth walls on the inside and outside of the sump. Smooth sides bond better to prevent leaks and other maintenance needs.

Features & Benefits:

- ◆ The shortest lead times of any fiberglass sumps in the industry
- ◆ Consistent thickness and smooth surfaces for a watertight seal
- ◆ Built with legendary OPW quality, service, support and value
- ◆ Value-priced to compete against any fiberglass sumps on the market



Ordering Specifications - TSE Tank Sumps

Part Number	Sump Mount Design	Cover Style	A		B	C	D	Additional RK-5000 Resin Kits Needed for Top Hat Attachment (Sold Separately)	Additional RK-5000 Resin Kits Needed for Collar Ring Attachment (Sold Separately)
			Maximum Sump Height	Minimum Sump Height	Sump Base Diameter	Sump Lid Diameter	Minimum Diameter Opening		
TSE-4233CR*	Collar Ring	Compression	43"	30"	42"	34"	33"	1	1
TSE-4233SB*	Solid Bottom	Compression	43"	30"	42"	34"	33"	1	—
TSE-4233CR-WT	Collar Ring	Locking L Handles	45"	33.5"	42"	34"	29"	1	1
TSE-4233SB-WT	Solid Bottom	Locking L Handles	46"	33.5"	42"	34"	29"	1	—

*For Compression Style TSE Lids, (1) tube of SL-1100 is recommended for installation of seal.

Replacement Parts/Accessories

Part #	Description
TSEBASE-42CR	TSE 42" Medium Bury Collar Mount
TSEBASE-42SB	TSE 42" Medium Bury Solid Bottom
TSE-4233TH*	TSE Top Hat Compression Style
TSE-4233TH-WT	TSE Top Hat SS Ring - Locking L Handle
TSE-LID	TSE Lid - Compression Style
WT-33SL	TSE Lid - Locking L Handle
TSE-SEAL	TSE Seal Kit for TSE-4233CR and TSE-4233SB
216662	TSE Lid Center Handle (Used on TSE-LID and WT-33SL)
210474	TSE Lid Center Handle Screws (2 required)

*For Compression Style TSE Lids, (1) tube of SL-1100 is recommended for installation of seal.



Listings and Certifications



VSE Vent Transition Sump

The new OPW Vent Transition Sump (VSE) is an at-grade system that utilizes the fiberglass DSE Dispenser Sump base with a powder-coated steel top. This laser-cut top features a lockable access hatch and is sloped for water-shedding. Tops arrive configured with up to four (4) pre-cut entry holes for either 2" or 3" vent stacks.

Rigid Entry Fittings (REF) are included for the vent stack entries, along with UV/ weather-resistant caps for protection. A vent stack rack system is available in units of 4 feet up to 12 feet total. The Rack System is also available in E-Coated Black.

The smooth walls inside and out of the DSE base allow for a more secure bond of the pipe entry fittings. See the chart below for available OPW Vent Transition System components for more efficient installs and superior quality.

The VSE Includes:

- ◆ Fiberglass DSE Base
- ◆ 14-Gauge Powder-Coated Steel Top
- ◆ Desired Configuration of Vent Stack Entries with REF Fittings and UV/Weather-Protection Caps



VSE Vent Transition Sump
With traditional Vent Stack Rack (VSR)



OPW Vent Transition System
With OPW Vent Pipe and Black VSR

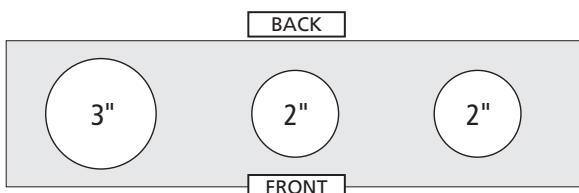
Features & Benefits:

- ◆ **Powder-Coated Steel Tops** – long-lasting, lockable, less heat absorption, and water-shedding performance. Rigid entry fittings included with UV / weather-resistant protective caps
- ◆ **Fiberglass DSE Base** – advanced composite technology provides smooth surfaces on both sides of the sump walls to create consistent thickness and shape for strong bonds with entry fittings
- ◆ **Any Pipe, Any Fittings** – sump base is compatible with all vent pipe and entry fittings
- ◆ **Customizable** – steel tops are pre-configured to arrive laser-cut with up to four (4) 2" vent-stack entries and up to three (3) 3" vent-stack entries
- ◆ **Peace-of-Mind Installations** – Tested, quality products that are designed to install faster and perform over time
- ◆ **Vent Transition System** – combine with OPW's vent pipe, PV vents, and other components for superior performance, cost savings, and enhanced efficiency of installs
- ◆ **Tops Can Be Ordered Separately** – if stocking DSE bases

Part Number Configuration Guide

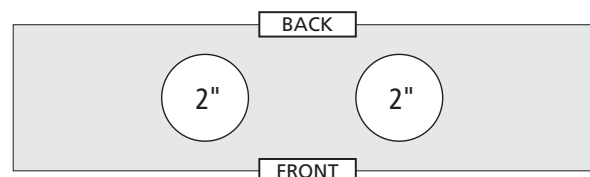
VSE - _ _ _ _ Dashes represent the sizes of vent stack entries, determined from left to right. (Up to four (4) 2" entries and up to three (3) 3" vent-stack entries are available.)

To order Tops separately, follow above method using part number **VSE-TOP- _ _ _ _**



Example A:

VSE-322 = (3) entries total. (1) 3" diameter and (2) 2" diameter



Example B:

VSE-22 = (2) entries total, both 2" diameter

Vent Stack Modular Rack System

VSR-4: 4ft VSR-8: 8ft VSR-12: 12ft
VSR-4B: 4ft Black VSR-8B: 8ft Black VSR-12B: 12ft Black

Pipe Clamps for Vent Stacks Purchased Separately

218384	2" pipe clamp
218385	3" pipe clamp

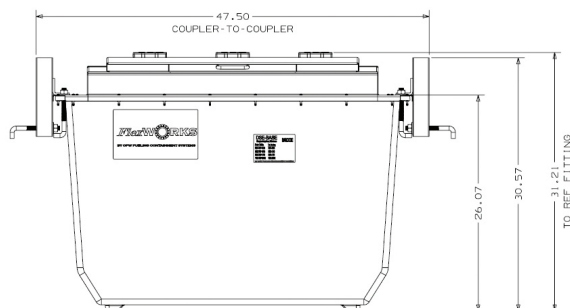
VSE & VSR Replacement Parts

Part Number	Description
REF-0200V	RIGID ENTRY FITTING, 2.0" SINGLE WALL FRP, 2" REF cover, VSE
REF-0300V	RIGID ENTRY FITTING, 3.0" SINGLE WALL FRP, 3" REF cover, VSE
218212	2" REF Cover
218356	3" REF Cover
215926	Top Installation Kit
H13190	Anchor bolt kit
218255	SQ TUBE, RACK
218257	STRUT
218256	Coupler
218437	Hardware kit base
218438	Hardware kit extension

Available OPW Vent Transition System Components

Pressure Vacuum Vents	623V-2203 2" Thread-On NPT 623V-3203 3" Thread-On NPT	723V-2203 2" Thread-On NPT. CARB EVR 723V-3203 3" Thread-On NPT. CARB EVR
OPW FlexWorks Vent Pipe	V20 2" Double-Wall Vent Pipe	V30 3" Double-Wall Vent Pipe
Pipe Couplings	DPC-2200A 2" Double-Wall Swivel DPC-2300A 3" Double-Wall Swivel	SBC-2200 2" Swivel Bolt-On (NPT)
Entry Fittings (for DSE sump)	REF-0200 2" Rigid Entry Fitting HEF-0200 2" Hybrid Entry Fitting HEF-6030 3" Hybrid Entry Fitting	
Elbows	SEF-2020 2" Elbow, 2" Female NPT to 2" Male NPSH SEF-3030 3" Elbow, 3" NPSH x 3" NPT	

Product Dimensions



- 47.50" COUPLER-TO-COUPLER
- 31.21" TO REF FITTINGS
- HEIGHT: 30.57"
- WIDTH: 32.50"



Vent Stack Rack (VSR)
shown in e-coated black



GSE Grade-Level Transition Sump

OPW delivers an ideal solution for aboveground storage tanks (AST) with the GSE Grade-Level Transition Sump. The GSE is a versatile at-grade system suitable for multiple applications, including aviation, marine, fuel oil and generators.

One Base for All

The new GSE is built with a multi-purpose fiberglass DSE base with smooth surfaces on both sides of the sump walls for consistent thickness. The unit is entirely stackable, nestable and easily separated to maximize space and accessibility. The GSE base is compatible with all pipe and entry fittings.

Durable Hardware for Maximum Performance

Built with the same quality materials as other OPW sumps, the GSE features powder-coated steel tops for less heat absorption, and the thoroughly tested, quality hardware is designed for fast and easy installation.

The GSE Includes:

- ◆ Fiberglass DSE Base
- ◆ 14-Gauge Powder-Coated Steel Top

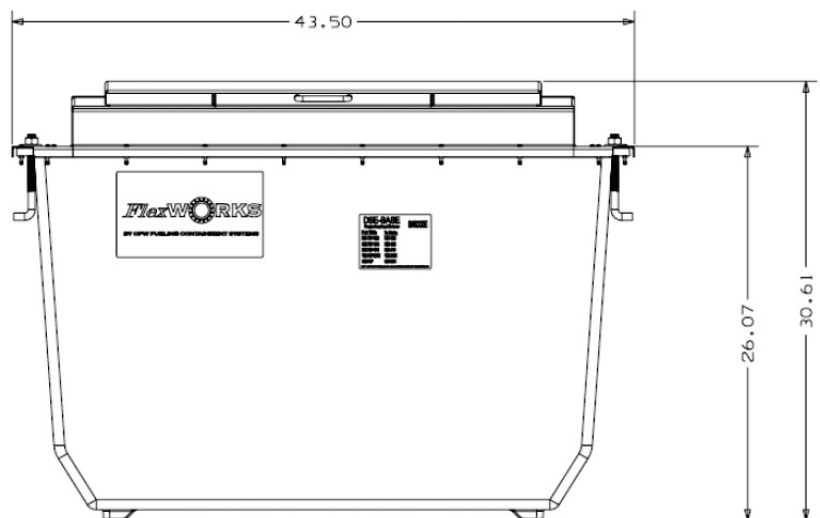
Part Numbers	
GSE-3344	GSE Steel Top with DSE Base
GSE-TOP	GSE Steel Top
DSE-BASE	DSE Base



Features & Benefits:

- ◆ **Fiberglass DSE Base** – advanced composite technology provides smooth surfaces on both sides of the sump walls to create consistent thickness and shape for strong bonds with entry fittings. This is a multi-purpose base and is the same one used for dispenser and vent transition applications. It is completely stackable, nestable and easily separated to maximize warehouse and job-trailer space. One base – many functions!
- ◆ **Powder-Coated Steel Tops** – long-lasting, lockable, less heat absorption and water-shedding performance
- ◆ **Any Pipe, Any Fittings** – sump base is compatible with all pipe and entry fittings
- ◆ **Peace-of-Mind Installations** – tested, quality products that are designed to install faster and perform over time
- ◆ **GSE Tops Can Be Ordered Separately** – for those who stock DSE bases
- ◆ **Versatile Transition Sump** – multiple applications as a transition or junction box, including AST, aviation, marina, fuel oil, generator, chemical, water and electrical

Product Dimensions



Total: 43.5" length x 32.5" width



3250 US-70 BUS ◆ Smithfield, North Carolina USA 27577 ◆ Phone: (800) 422-2525 ◆ Fax: (800) 421-3297

NOTE: All information subject to engineering and/or other changes. All trade names are copyrighted. Patents Pending. ©2025 OPW Retail Fueling. ©2025 Delaware Capital Formation, Inc. All Rights Reserved. DOVER and the DOVER logo are registered trademarks of Delaware Capital Formation, Inc., a wholly-owned subsidiary of Dover Corporation.