



The image shows a detailed view of an OPW 7150 Overfill Prevention Valve. The valve is a vertical assembly with a black, segmented top section. Below this is a green band, followed by a silver-colored metal body with a small, dark, wing-like component. The valve is shown extending from a brown, textured surface, likely representing a fuel tank. In the background, a blurred image of a gas station with blue and white structures is visible under a blue sky with clouds.

OPW 7150 OVERFILL PREVENTION VALVES

One Company. One Call. One Package.

- Segmented Version Now Available
- Testable and Non-Testable Models
- Vapor-Tight and Non-Vapor Tight
- CARB/EVR Approved Versions

OPW 
RETAIL FUELING
a **DOVER** company

Revised 2/3/2026

FUELED BY **EXCELLENCE**

7150 Overfill Prevention Valves

The 7150 Overfill Prevention Valve prevents the overfill of underground storage tanks by providing a positive shut-off of product delivery. The shut-off valve is an integral part of the drop tube used for gravity filling.

The OPW 7150 allows easy installation (without breaking concrete) and requires no special manholes.

The OPW 7150 is a two-stage shut-off valve. During installation, the 7150 provides the flexibility to put the shut-off feature anywhere in the tank which is acceptable by local regulation. When the liquid level rises to the desired shut off level, the valve mechanism is released, closing automatically with the flow. This reduces the flow rate to approximately 5 gpm through a bypass valve. The operator then stops the filling process, disconnects and drains the delivery hose. If liquid exceeds the desired shutoff level, the valve will close automatically each time delivery is attempted.

If the delivery is not stopped and the liquid rises to beyond the desired shut-off level - reaching near tank capacity, the bypass valve closes completely. No additional liquid can flow into the tank until the level drops below a reset point.

Features & Benefits:

- ◆ **Completely Automatic Operation** – no pre-checks to perform, no resets and no overrides to be broken or abused. No reliance on delivery attendant for certainty of overfill protection.
- ◆ **Simple, Easy and Quick Installation** – no excavation or special manholes required.
- ◆ **Segmented Version Now Available** – for ease of shipping, storage and enhanced protection.
- ◆ **Economical** – costs a fraction of difficult-to-install valves.
- ◆ **Does Not Rely on Pressure in the UST to Stop Flow** – operates directly from liquid level.
- ◆ **Will Accept a Dipstick for Gauging**
- ◆ **Retrofits Directly** – for both new and existing tanks with 4" fill risers.
- ◆ **Quick Drain Feature** – automatically drains hose when head pressure is relieved.
- ◆ **Keeps the Top of UST "Dry," per EPA Requirements** – eliminates possible leaks at loose bung fittings and the need for double containment on vent lines.
- ◆ **Fastest Flow Rate in The Industry***

* OPW Test Lab results

Materials

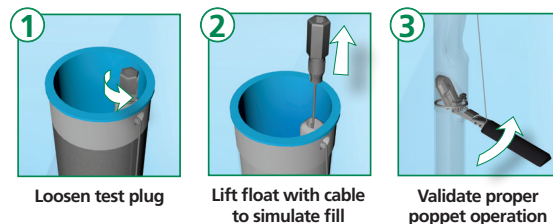
Valve Body: Cast aluminum
Float: Nitrile rubber, closed-cell foam
Valve: Aluminum
Seals: Viton®
Upper & lower Drop Tube: Aluminum
Plastic Parts: Acetal
Hardware: Stainless steel



7150 Testable Overfill Valve

The OPW Testable 7150-T Overfill Prevention Valve is the easiest, quickest and most cost-efficient way to ensure that your overfill valves will operate when called upon – verifiable without removing them from the tanks. The OPW 7150-T Testable Overfill Prevention Valve is the only UST Overfill Prevention Valve that is testable from the surface without removal from the tank.

Testing & Verification Easy as 1-2-3



The OPW Testable 7150 Helps You Be in Compliance with EPA Regulations

- ◆ The Overfill Prevention Valve is testable without removal from the tank
- ◆ A testable feature is attached to a sealed plug in the inlet Adaptor
- ◆ The plug is easily accessed with a standard socket extension
- ◆ Attached to the extension, the testable feature can be raised and lowered, allowing the user to inspect valve operation from inside the tube
- ◆ The plug is then easily reinstalled to the inlet Adaptor from grade
- ◆ No fill components, overfill valves or vapor-tight seals have to be removed – avoids compromising vapor-tight compliance
- ◆ The Testable 7150 uses the same industry-leading overfill prevention technology for strong vapor-tight compliance
- ◆ B100 compatible

71SO Segmented Overfill Prevention Valve

The new 71SO Segmented Overfill Valve is designed with the same reliability, quality materials and shut-off features trusted in the traditional 71SO, with the added benefit of more compact packaging for transport and storage.



Shipping in segments helps reduce potential damage during transit while enabling more cost-efficient transport and easier storage. The four 5 ft. segments can be customized to fit 8-12 ft. tank diameters, with an overall length exceeding 223 inches.

The 71SO Segmented Drop Tube is available in multiple versions to meet your needs:

■ **Testable or Non-Testable** ■ **Vapor-Tight or Non-Vapor-Tight**

Easy to assemble with included tube joiners. Download the OPW App for installation calculators.

All Segmented Overfill Valves are compatible up to B100 (non-E85 versions).



Product Parts

4SC and 4SCT Part Numbers
are CARB/EVR Approved



Replacement Tube Segments

Product Number	Product Description	Tank Diameter	Upper Tube Assembly Length	Lower Tube Assembly Length	Overall Length
71SO-4S	Segmented Non-Vapor-Tight Overfill Valve (Non-Testable)	8', 10', 12'	98-3/8"	112-9/16"	223-9/16"
71SO-4SC	Segmented Vapor-Tight Overfill Valve (Non-Testable)	8', 10', 12'	98-3/8"	112-9/16"	223-9/16"
71SO-4SCT	Segmented Vapor-Tight Overfill Valve (Testable)	8', 10', 12'	98-1/4"	112-9/16"	223-3/8"
71SOM-4SC	Segmented E85 Vapor-Tight Overfill Valve	8', 10', 12'	98-3/8"	112-7/16"	223-7/16"
71SOM-4SCT	Segmented E85 Testable Vapor-Tight Overfill Valve	8', 10', 12'	98-1/4"	112-7/16"	223-5/16"
61T-4SC	Segmented Vapor-Tight Drop Tube	-	-	-	168-1/16"

Part #	Description
71SO-4S-T1	Segment 1 Tube - Segmented Non-Vapor-Tight Overfill Valve
71SO-4S-T2	Segment 2 Tube - Segmented Non-Vapor-Tight Overfill Valve
71SO-4S-T3	Segment 3 Tube - Segmented Non-Vapor-Tight Overfill Valve
71SO-4S-T4	Segment 4 Tube - Segmented Non-Vapor-Tight Overfill Valve
71SO-4SC-T1	Segment 1 Tube - Segmented Vapor-Tight Overfill Valve
71SO-4SC-T2	Segment 2 Tube - Segmented Vapor-Tight Overfill Valve
71SO-4SC-T3	Segment 3 Tube - Segmented Vapor-Tight Overfill Valve
71SO-4SC-T4	Segment 4 Tube - Segmented Vapor-Tight Overfill Valve
71SO-4SCT-T1	Segment 1 Tube - Segmented Testable Vapor-Tight Overfill Valve
71SO-4SCT-T2	Segment 2 Tube - Segmented Testable Vapor-Tight Overfill Valve
71SO-4SCT-T3	Segment 3 Tube - Segmented Testable Vapor-Tight Overfill Valve
71SO-4SCT-T4	Segment 4 Tube - Segmented Testable Vapor-Tight Overfill Valve
61T-4SC-T1	Segment 1 Tube - Segmented Vapor-Tight 61T Drop Tube
61T-4SC-T2	Segment 2 Tube - Segmented Vapor-Tight 61T Drop Tube

Accessories & Replacement Parts

Part #	Description
71SO-SEGTOOL	Tool and Hardware, 71SO Seg. Drop Tube and Inlet Tube
71SO-SEGTOOL-HWKIT	Replacement Hardware Kit, 71SO Segmented Drop Tube Tool and Inlet Tube
71SO-4S-DBKIT	Deep Bury Kit for 71SO-4S (E0-E15, B0-B100)
71SO-4SC-DBKIT	Deep Bury Kit for 71SO-4SC(T) (E0-E15, B0-B100)
71SOM-4SC-DBKIT	Deep Bury Kit for 71SOM-4SC(T) (E85)
71SO-4S-TJKIT	Tube Joiner Kit for 71SO-4S (E0-E15, B0-B100)
71SO-4SC-TJKIT	Tube Joiner Kit for 71SO-4SC(T) (E0-E15, B0-B100)
71SOM-4SC-TJKIT	Tube Joiner Kit for 71SOM-4SC(T) (E85)
206740-KIT	Replacement Cable Kit
61SOK-0001	61SO Replacement Float Kit
H11931M	Drop Tube Seal/O-ring
H14840M	Lower Tube Seal/O-ring

Traditional (Non-Segmented) 71SO Overfill Prevention Valves

Ordering Specifications

Testable

Product #	Description	A- Upper Tube Length		B- Lower Tube Length		C- Overall Length		Max. Riser Length		Max. Nominal Tank Dia.		Max. Actual Tank Dia.		Weight	
		in.	m	in.	m	in.	m	in.	m	in.	m	in.	m	lbs.	kg
71SO-400CT*	Testable Vapor-Tight Overfill Valve, 5 Ft. Bury, 8 Foot Tank	60	1.5	83	2.1	154 ³ / ₄	3.9	53 ¹ / ₂	1.4	96	2.4	107	2.7	16	7
71SO-410CT*	Testable Vapor-Tight Overfill Valve, 10 Ft. Bury, 10 Foot Tank	120	3.1	102	2.6	234 ³ / ₄	5.9	113 ¹ / ₂	2.9	120	3.1	126	3.2	25	11
71SO-420CT*	Testable Vapor-Tight Overfill Valve, 10 Ft. Bury, 12 Foot Tank	120	3.1	126	3.2	258 ³ / ₄	6.5	113 ¹ / ₂	2.9	144	3.7	150	3.8	26	12
206740-KIT	Replacement Cable Kit														
206741	Replacement Inlet Tube w/ 206740 Cable Kit														

* B100 Compatible

Product #	Description	Bury Depth		Tank Diameter		Upper Tube Length		Lower Tube Length		Overall Length		Max. Riser Length		Max. Nominal Tank Dia.		Max. Actual Tank Dia.		Weight	
		ft.	m	ft.	m	in.	m	in.	m	in.	m	in.	m	in.	m	in.	m	lbs.	kg
71SO-400CB*	B20-B100 Overfill Valve	5	1.5	8	2.4	60	1.5	83	2.1	155 ³ / ₄	3.9	53 ¹ / ₂	1.4	96	2.4	107	2.7	16	7
71SO-410CB*	B20-B100 Overfill Valve	10	3.0	10	3.0	120	3.1	102	2.6	234 ³ / ₄	5.9	113 ¹ / ₂	2.9	120	3.1	126	3.2	25	11
71SO-420CB*	B20-B100 Overfill Valve	10	3.0	12	3.6	120	3.1	126	3.2	258 ³ / ₄	6.5	113 ¹ / ₂	2.9	144	3.7	150	3.8	26	12
71SO-400C	Vapor-Tight Overfill Valve	5	1.5	8	2.4	60	1.5	83	2.1	155 ³ / ₄	3.9	53 ¹ / ₂	1.4	96	2.4	107	2.7	16	7
71SO-410C	Vapor-Tight Overfill Valve	10	3.0	10	3.0	120	3.1	102	2.6	234 ³ / ₄	5.9	113 ¹ / ₂	2.9	120	3.1	126	3.2	25	11
71SO-420C	Vapor-Tight Overfill Valve	10	3.0	12	3.6	120	3.1	126	3.2	258 ³ / ₄	6.5	113 ¹ / ₂	2.9	144	3.7	150	3.8	26	12
71SO-4000	Non Vapor-Tight Overfill Valve	5	1.5	8	2.4	60	1.5	83	2.1	155 ³ / ₄	3.9	53 ¹ / ₂	1.4	96	2.4	107	2.7	16	7
71SO-4010	Non Vapor-Tight Overfill Valve	10	3.0	10	3.0	120	3.1	102	2.6	234 ³ / ₄	5.9	113 ¹ / ₂	2.9	120	3.1	126	3.2	25	11
71SOM-412C	E85 Vapor-Tight Overfill Valve	10	3.0	10	3.0	120	3.1	102	2.6	234 ³ / ₄	5.9	113 ¹ / ₂	2.9	120	3.1	126	3.2	38	17.3
71SO-TOOLCT	71SO Installation Tool																	2.5	1
61JSK-4RMT	Jack Screw Kit For Vapor-Tight Remote Applications																	1.5	0.7
61JSK-4410	Jack Screw Kit For Composite Base Spill Buckets																	1	0.5
61JSK-44CB	Jack Screw Kit For Cast-Iron Base Spill Buckets																	1	0.5
71JSK-4RMT	E85 Jack Screw for Remote-Fill Applications																	1	0.5
71JSK-44MA	E85 Jack Screw for Direct-Fill Applications																	1.5	0.7

61JSK-4410 AND 61JSK-44CB Instruction Sheet Order Number: H15289M

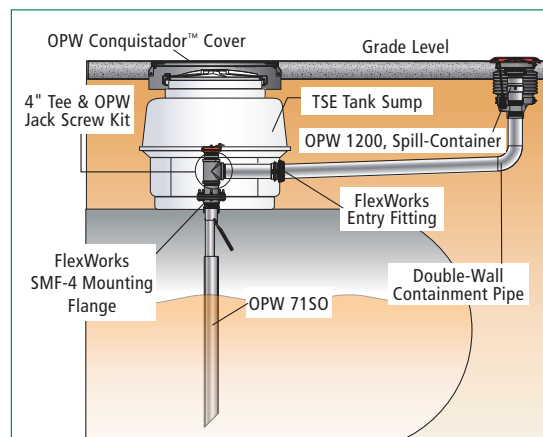
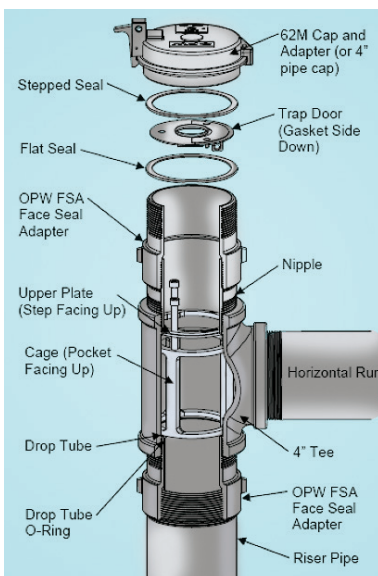
* B100 Compatible



OPW 71SOM is EVR Approved for E85

71SO Vapor-Tight Remote Fill

The OPW Vapor-Tight Remote Fill is designed for two-point vapor-tight remote-fill applications, where the fill point is not directly over the UST. A CARB-approved vapor-tight 71SO overfill valve is installed in the sump through a riser pipe directly over the tank.



Important

In order to prevent product spillage from the Underground Storage Tank (UST), properly maintained delivery equipment and a proper connection at the tight-fill adaptor are essential. Delivery personnel should be managed and trained to inspect delivery elbows and hoses for damaged and missing parts. They should always make certain there is a positive connection between the adaptor and elbow. If delivery equipment is not properly maintained, or the elbow is not securely coupled to the adaptor, a serious spill may result when the OPW 71SO closes, causing a hazard and environmental contamination.

NOTE: The OPW 71SO is designed for use on tight-fill gravity-drop applications only. Do not use for pressure-fill applications.