

Materials

Lid: cast iron, with powder-coated finish
Body: aluminum
Shaft: zinc-plated steel
O-Ring: Buna-N

201	SCFH @ 2½ PSI (0.17 bar)
4"	101,000
6"	250,000
8"	471,000



OPW 201 EMERGENCY VENTS

The OPW 201 Emergency Vent is designed to prevent an aboveground storage tank from becoming over-pressurized by providing high-capacity venting in the event of a fire or blockage of the OPW 23, 113, 523V, or 623V. The 201 is a weighted, mushroom-style emergency vent. When the AST builds pressure, the weighted cast iron lid is forced up off its seat to relieve the pressure. When pressure is relieved, the lid lowers and is automatically reset. The appropriate 201 Series vent is determined by the emergency venting capacity requirements of the AST and the type of connection at the tank's emergency vent opening. The OPW 201 Emergency Vent is available in 4", 6" and 8" openings with female NPT, male NPT or flanged connections (8") to allow for easy installation in new or existing aboveground tanks. Various lid pressure settings determine the initial venting of the valve.

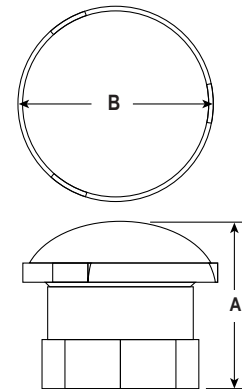
Features

- ◆ **Automatically Resets** – Weighted cast iron cover reseats once the pressure in the tank is relieved.
- ◆ **O-Ring Sealed Cover with Teflon-Coated Seat** – Ensures smooth, tight sealing surface and reliable service life.
- ◆ **Octagon-Shaped Base for Ease of Installation** – Wrenching surface is integral to the vent body.
- ◆ **Aluminum Body and Cast Iron Lid.**
- ◆ **Epoxy Powder-Coated Cover** – Prevents rusting of the cover to protect expensive finishes on ASTs.
- ◆ **UL Listed** - To satisfy Third Party accreditation requirements of many jurisdictions.
- ◆ **Aluminum Bodies** - prevent interference with interstitial space in double-wall tanks.

Ordering Specifications - Aluminum Body

Model #	Opening		Weight	Mounting Connection	Opening		Opening		lbs.	kg
	in.	mm			in.	mm	in.	mm		
201-4080	4	102	8 oz.	Female NPT	5½	143	5½	133	9.2	4.2
201-6080	6	152	8 oz.	Female NPT	6¾	175	7¾	197	18.5	8.4
201-8080	8	203	8 oz.	Female NPT	7½	193	10	254	33.5	15.2
201M-4081	4	102	8 oz.	Male NPT	5½	143	5½	133	9.2	4.2
201M-6081	6	152	8 oz.	Male NPT	6¾	175	7¾	197	18.9	8.6
201M-6161	6	152	16 oz.	Male NPT	7¾	200	8¾	225	34.9	15.8
201M-8081	8	203	8 oz.	Male NPT	7½	193	10	254	33.8	15.3
201F-8085	8	203	8 oz.	Flanged	4¾	125	13½	343	42.8	19.4

201 Series Instruction Sheet Order Number: H14271PA



Replacement Parts

Part #	Description
H13265M	4" O-Ring
H13266M	6" O-Ring
H13267M	8" O-Ring

Approvals and Listings

