

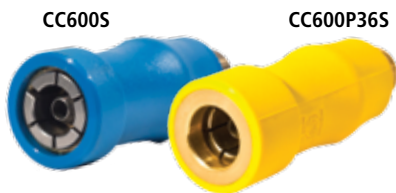


## CNG Type 2 Fueling System

The OPW CleanEnergy CNG 3-Way Valve and Type 2 Nozzle features the latest in industrial and commercial fueling innovations. A Fueling System which bridges the gap between convenience and comfort, without sacrificing flow or reliability. Ergonomically designed to be easy to use and prevent unnecessary wear and tear during the fueling process.

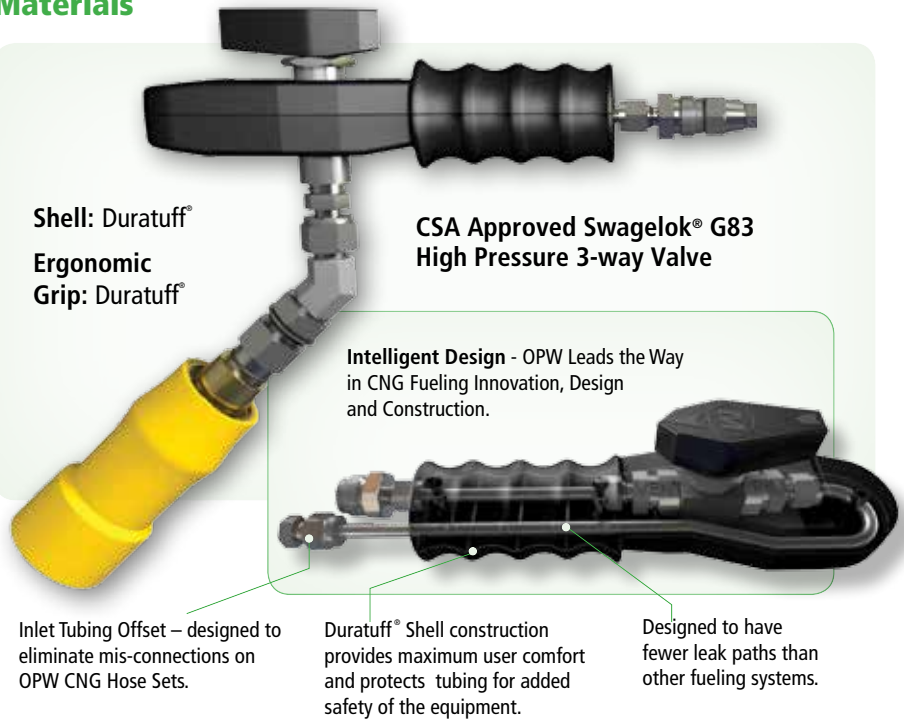
## FIL-MASTER™ CC600 Series Fast-Fill/ Fleet-Fill Nozzles (NGV1 Type 2 or 3)

OPW Fil-Master™ 600 Series Fast-Fill/Fleet-Fill Nozzles are designed for high-flow CNG fueling systems. Applications include quick-fill fueling of automobiles, light trucks, shuttle buses, vans and time-fill or overnight fleet fueling.



Product #	Inlet Thread Size	Color	Service Pressure
CC600S	SAE - 6, 9/16" - 18 UNF	Blue	P30 - 3000 psi (200 bar)
CC600P36S	SAE - 6, 9/16" - 18 UNF	Yellow	P36 - 3600 psi (250 bar)

## Materials



Shell: Duratuff®  
Ergonomic Grip: Duratuff®

CSA Approved Swagelok® G83 High Pressure 3-way Valve

Intelligent Design - OPW Leads the Way in CNG Fueling Innovation, Design and Construction.

Inlet Tubing Offset – designed to eliminate mis-connections on OPW CNG Hose Sets.

Duratuff® Shell construction provides maximum user comfort and protects tubing for added safety of the equipment.

Designed to have fewer leak paths than other fueling systems.

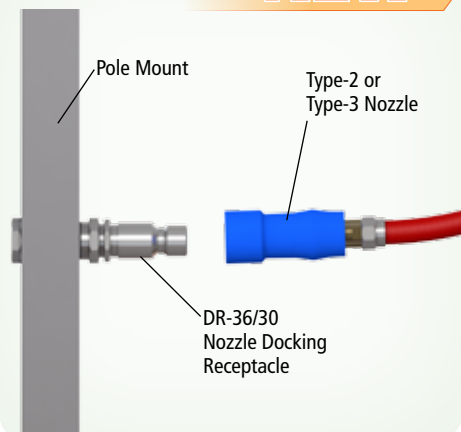
## Features

- ◆ **Hose Connection Options** - Time-Fill Applications - 4/4 Sized Hose (1/4" Inlet and 1/4" Vent). Fast-Fill Applications - 4/6 Sized Hose (3/8" Inlet and 1/4" Vent)
- ◆ **Ergonomic Grip** - Duratuff® Grip provides maximum user comfort and control
- ◆ **Duratuff® Shell** - Specifically designed to handle operational wear-and-tear as well as protecting your vehicle from dents and scratches during fueling.
- ◆ **CNG Type 2 Fueling System Extension Options** - Offers the convenience of connection flexibility. Operators can connect to vehicles regardless of the application. Use one of four different connection options; 3/4", 45°, 4" Rigid or 17" Flex Hose to help in fueling difficult-to-reach receptacles or tanks.
- ◆ **CC600S Series Nozzle** - OPW CC600S (3,000 psi) and CC600P36S (3,600 psi) Nozzles feature an internal filter to capture gas-borne debris commonly found in CNG Fueling systems.

## Listings and Certifications



**NEW**

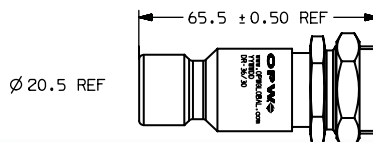


## DR-36/30 Nozzle Docking Receptacle

This is a Nozzle Docking receptacle to be used ONLY for Type-2 & Type-3 nozzle mounting purposes. There are no working internals, therefore it may only be used as a docking storage device. **NOTE:** It shall not be used to dock a Type-1 nozzle.

## Ordering Specifications

Product #	Description
DR-36/30	Nozzle Docking Receptacle



## Nozzle Types

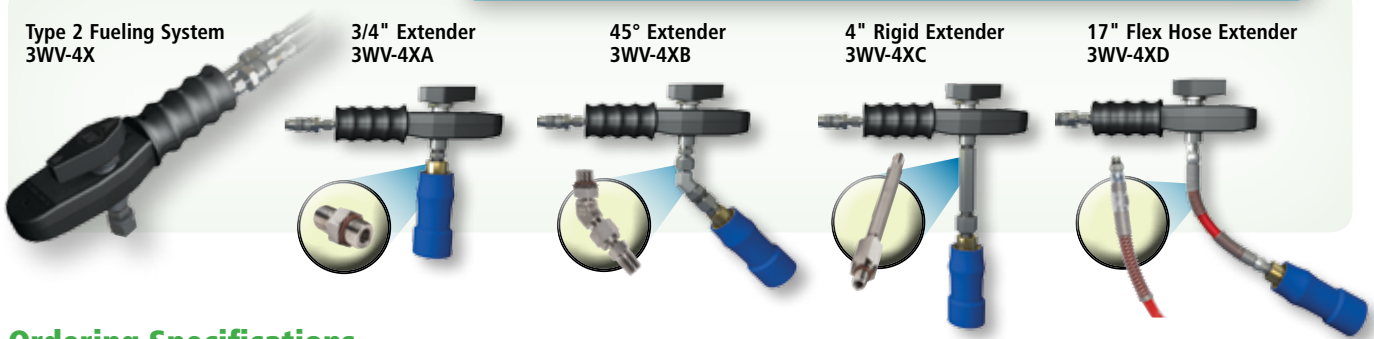
- Type 1** - Nozzle with an integrated vent valve system. This vent valve is controlled by the single lever operation which will safely vent the gas trapped between the receptacle check valve and the nozzle inlet valve. After the venting process, the nozzle will disconnect from the vehicle's receptacle.
- Type 2** - The vent valve operating mechanism is external to the nozzle. Venting is required prior to disconnection of this type of nozzle.
- Type 3** - The fueling hose is automatically depressurized below 50psi (3.4Bar) at dispenser shutdown. The nozzle will vent low pressure gas between the receptacle check valve and the nozzle inlet valve.

**NOTE:** This device shall not be installed on a vehicle nor be connected to a pressurized source of any type.



## CNG Type 2 Fueling System

### FOUR EXTENDER OPTIONS TO CHOOSE FROM



### Ordering Specifications

Product #	Description	Connection Fill	Connection Vent	Approx. Weight	Service Pressure
3WV-44	3-way valve, cover and outlet tubing, connections				
3WV-44A	3-way valve, cover, outlet tubing				
3WV-44B	3-way valve, cover, outlet tubing and 45 degree extender	4- <small>SAE-AN</small>	4- <small>SAE-AN</small>	1.4 lb. (.63 kg)	up to 5,000 psi / 345 bar
3WV-44C	3-way valve, cover, outlet tubing, connections and 4" rigid extender				
3WV-44D	3-way valve, cover, outlet tubing, connections and whip-hose extender				
3WV-44AP30	3-way valve, cover, outlet tubing and 3/4" extender & CC600S				
3WV-44BP30	3-way valve, cover, outlet tubing and 45 degree extender & CC600S	4- <small>SAE-AN</small>	4- <small>SAE-AN</small>	2.74 lb. (1.24 kg)	3,000 psi / 200 bar
3WV-44CP30	3-way valve, cover, outlet tubing and 4" rigid extender & CC600S				
3WV-44DP30	3-way valve, cover, outlet tubing and whip-hose extender & CC600S				
3WV-44AP36	3-way valve, cover, outlet tubing and 3/4" extender & CC600P36S				
3WV-44BP36	3-way valve, cover, outlet tubing and 45 degree extender & CC600P36S	4- <small>SAE-AN</small>	4- <small>SAE-AN</small>	2.74 lb. (1.24 kg)	3,600 psi / 250 bar
3WV-44CP36	3-way valve, cover, outlet tubing and 4" rigid extender & CC600P36S				
3WV-44DP36	3-way valve, cover, outlet tubing and whip-hose extender & CC600P36S				
3WV-46	3-way valve, cover, outlet tubing				
3WV-46A	3-way valve, cover, outlet tubing and 3/4" extender				
3WV-46B	3-way valve, cover, outlet tubing and 45 degree extender	8- <small>SAE-AN</small>	4- <small>SAE-AN</small>	1.416 lb. (.63 kg)	up to 5,000 psi / 345 bar
3WV-46C	3-way valve, cover, outlet tubing and 4" rigid extender				
3WV-46D	3-way valve, cover, outlet tubing and whip-hose extender				
3WV-46AP30	3-way valve, cover, outlet tubing and 3/4" extender and CC600S				
3WV-46BP30	3-way valve, cover, outlet tubing and 45 degree extender and CC600S	8- <small>SAE-AN</small>	4- <small>SAE-AN</small>	2.74 lb. (1.24 kg)	3,000 psi / 200 bar
3WV-46CP30	3-way valve, cover, outlet tubing and 4" rigid extender and CC600S				
3WV-46DP30	3-way valve, cover, outlet tubing and whip-hose extender and CC600S				
3WV-46AP36	3-way valve, cover, outlet tubing and 3/4" extender and CC600P36S				
3WV-46BP36	3-way valve, cover, outlet tubing and 45 degree extender and CC600P36S	8- <small>SAE-AN</small>	4- <small>SAE-AN</small>	2.74 lb. (1.24 kg)	3,600 psi / 250 bar
3WV-46CP36	3-way valve, cover, outlet tubing and 4" rigid extender and CC600P36S				
3WV-46DP36	3-way valve, cover, outlet tubing and whip-hose extender and CC600P36S				

# CleanEnergy Nozzle Compatibility Matrix



	CNG Nozzles	CNG Breakaways		NEW CNG Breakaways & CNGBREAKKITS			Standard NGV1 CNG Receptacles NOTE: These use Receptacle Fit Gage RINGO-0001						High Flow CNG Receptacles NOTE: These use Receptacle Fit Gage RINGO-0005						Nozzle Gages					
		ILB-1	ILB-5	FLB 1000 & CNG BREAK KIT-1000	FLB 5000 & CNG BREAK KIT-5000	NGVLB	LB30	LD30	LE30	LB36	LD36	LE36	CL40	CL4078	CL50	CL5000	CL5016	CL5078	JAWGO -1	JAWGO -5				
NGV1	Type 1	PGXXP30	✓	X	✓	X	✓	✓	✓	✓	✓	✓	✓	✓	✓	✓	✓	✓	✓	✓	✓	X		
		PGXXP36	✓	X	✓	X	✓	✓	✓	✓	✓	✓	✓	✓	✓	✓	✓	✓	✓	✓	✓	✓	X	
		CT1000SS (3,000 psi/ 200 bar)	✓	X	✓	X	✓	✓	✓	✓	✓	✓	✓	✓	✓	✓	✓	✓	✓	✓	✓	✓	✓	X
		CT1000P36S (3,600 psi/ 250 bar)	✓	X	✓	X	✓	X	X	X	✓	✓	✓	X	X	X	X	X	X	X	✓	✓	✓	X
	Type 2 & 3	CC300P30S (3,000 psi/ 200 bar)	✓	X	✓	X	✓	✓	✓	✓	✓	✓	X	X	X	X	X	X	X	✓	✓	✓	X	
		CC300P36S (3,600 psi/ 250 bar)	✓	X	✓	X	✓	X	X	X	✓	✓	X	X	X	X	X	X	X	✓	✓	✓	X	
		CC600S (3,000 psi/ 200 bar)	✓	X	✓	X	✓	✓	✓	✓	✓	✓	X	X	X	X	X	X	X	✓	✓	✓	X	
		CC600P36S (3,600 psi/ 250 bar)	✓	X	✓	X	✓	X	X	X	✓	✓	X	X	X	X	X	X	X	✓	✓	✓	X	
	Type 3	CC600 Series Nozzle including 3-Way Valve (3WV series) (3,600 psi/250 bar & 3,000 psi/200 bar)	✓	X	✓	X	✓	✓	✓	✓	✓	✓	X	X	X	X	X	X	X	✓	✓	✓	X	
		CC250 (3,000 psi/200 bar)	✓	X	✓	X	✓	✓	✓	✓	✓	✓	X	X	X	X	X	X	X	X	X	X	X	
Bus / High Flow	Type 1	CT5000S (3,600 psi/250 bar)	X	✓	X	✓	✓	X	X	X	X	✓	✓	✓	✓	✓	✓	✓	X	X	✓	✓		
	Type 2	CC6000 (3,600 psi/250 bar)	X	✓	X	✓	✓	X	X	X	X	✓	✓	✓	✓	✓	✓	✓	X	X	✓	✓		
CNG Defueling	BDN (3,600 psi/250 bar)	✓	X	✓	X	✓	✓	✓	✓	X	✓	✓	X	X	X	X	X	X	✓	✓	✓	X		

# CleanEnergy Hose Kit Compatibility Matrix

Fully Factory Assembled and Tested



			Time Fill			Light Duty (LD)					Heavy Duty (HD)		Extra Heavy Duty (XHD)	Defueling		
			2' Whip Hose / 14' Main Hose	2' Whip Hose / 18' Main Hose	8' Whip Hose / 12' Main Hose	2' Whip Hose / 8.3' Main Hose	2' Whip Hose / 8.3' Main Hose	2' Whip Hose / 10' Main Hose	2' Whip Hose / 13' Main Hose	2' Whip Hose / 13' Main Hose	2' Whip Hose / 8.3' Main Hose	2' Whip Hose / 8.3' Main Hose	2' Whip Hose / 8.3' Main Hose	10' Whip Hose / 2' Main Hose	25' Whip Hose / 25' Main Hose	
			TFCNG KIT-14C36	TFCNG KIT-20B36	TFCNG KIT-20D36	LDCNG KIT-11	LDCNG KIT-11 FLB	LDCNG KIT-12	LDCNG KIT-15A	LDCNG KIT-20B36	HDCNG KIT-11	HDCNG KIT-11FLB	XHDCNG KIT-10	LDCN DPK-12	XFLDCNG KIT-50	
Hose Kit Component																
Nozzles	NGV1	Type 1	PGXXP30	X	X	X	Contact OPW for Quote					X	X	X	X	X
		PGXXP36	X	X	X	Contact OPW for Quote					X	X	X	X	X	
		CT1000SS	X	X	X	X	X	X	✓	X	X	X	X	X	X	
		CT1000P36S	X	X	X	✓	✓	✓	X	X	X	X	X	X	✓	
	Type 2 & 3	CC600 Nozzle including 3-Way Valve	✓	✓	✓	X	X	X	X	✓	X	X	X	X	X	
	Bus / High Flow	Type 1	CT5000S	X	X	X	X	X	X	X	✓	✓	✓	X	X	
	Defueling	BDN	X	X	X	X	X	X	X	X	X	X	X	✓	✓ with 3WV-46D	
Fill Line Break-aways	Standard Duty	ILB-1	X	X	X	✓	X	X	X	X	X	X	X	X	X	
		FLB-1000	X	X	X	X	X	X	X	X	X	X	X	✓	X	
		CNGBREAK KIT-1000	✓	✓	✓	X	✓	✓	✓	✓	X	X	X	X	✓	
Fill Line Break-aways	Bus / High Flow	ILB-5	X	X	X	X	X	X	X	X	✓	X	X	X	X	
		FLB-5000	X	X	X	X	X	X	X	X	X	X	X	X	X	
		CNGBREAK KIT-5000	X	X	X	X	X	X	X	X	X	✓	✓	X	X	
Vent Line Breakaways	NGVLB	✓	✓	X	✓	X	✓	✓	✓	✓	✓	✓	X	✓		
Hose Retractor	6102-CNG	X	X	X	✓	✓	✓	✓	✓	X	X	X	X	✓		
	6102-CNG2	X	X	X	X	X	X	X	X	X	X	X	X	X		
	6102-CNG3	X	X	X	X	X	X	X	X	✓	✓	X	X	X		
	6102-CNG4	✓	✓	✓	X	X	X	X	X	X	X	X	X	X		