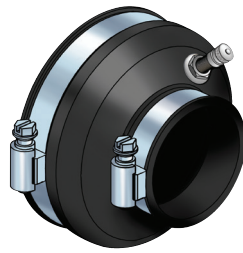


Test Boots

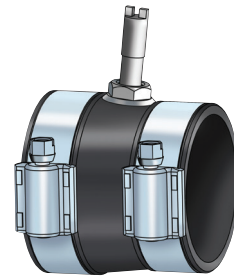
FlexWorks Test Boots are used to isolate and air-test the interstitial space between the primary and secondary pipe. One test boot is required for each pipe end.

The QCJ-2512 and QCT-2512 models allow users to quickly close the interstitial space of the pipe for testing. New EPA regulations maintain that secondarily contained areas must be tested for tightness after repairs and this new hardware saves time and money on labor when tests are necessary.

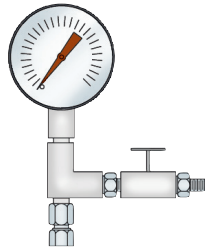
- QCJ-2512 (Junction) is used for pass-through UDCs, and the QCT-2512 (Termination) is used to terminate the run.
- Quick-close system allows for open systems to be closed and tested in minutes.



Models TBA-3015,
TBA-3020, TBA-4015 and TBA-4020



Models TBA-0075,
TBA-0100, TBA-0150 and TBA-0200



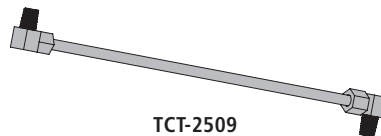
Test Gauge Assembly (TGA-15)



Test Jumper for Air Stems
(TJ-200A)



Test Line Termination Kit for Air Stems
(TLT-36A)



TCT-2509



TTT-2536

Ordering Specifications - Test Boot & Testing Equipment

| Model # | Application | Weight | |
|----------|---|--------|------|
| | | lbs. | kg |
| QCJ-2512 | Junction Test Kit, Double Wall System | | |
| QCT-2512 | Junction Test Kit, Double Wall System | | |
| TBA-0075 | 3/4" Test Boot with Air Stem | 0.20 | 0.09 |
| TBA-0100 | 1" Test Boot with Air Stem | 0.20 | 0.09 |
| TBA-0150 | 1.5" Test Boot with Air Stem | 0.35 | 0.16 |
| TBA-0200 | 2" Test Boot with Air Stem | 0.40 | 0.18 |
| TBA-0300 | 3" Test Boot with Air Stem | 0.70 | 0.32 |
| TBA-3015 | 3" to 1.5" Test Boot with Air Stem | 0.35 | 0.16 |
| TBA-3020 | 3" to 2" FRP Test Boot with Air Stem | 0.40 | 0.18 |
| TBA-4015 | 4" to 1.5" Test Boot with Air Stem | 0.75 | 0.34 |
| TBA-4020 | 4" to 2" Test Boot with Air Stem | 0.75 | 0.34 |
| TBA-4030 | 4" to 3" FRP Test Boot with Air Stem | 0.70 | 0.32 |
| TJ-200A | Test Jumper for Air Stems | | |
| TLT-36A | Test Line Termination Kit for Air Stems | | |
| TGA-15 | Test Gauge Assembly | | |
| TCT-2509 | Test Jumper for Double-Wall Coupling (DPC and SBC Series) | | |
| TTE-5 | Replacement Brass Elbows for Test Tubes (5 per bag) | | |
| TTT-2536 | Test Tube Termination Kit for Double-Wall Coupling (DPC and SBC Series) | | |



QCJ-2512