

Materials

Enclosure: Polybutylene terephthalate

Wire Grommet: Nylon w/Buna-N seal

Float Switch: Closed-cell Buna-N float
& stainless-steel rod

Pipe: Stainless steel

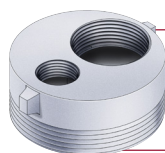
Tank Adaptor: Aluminum hardcoat anodized

444TA



Features

- ◆ **Up to four alarm signals (444TA)** – can be used for high or low liquid-level sensing, interstitial monitoring, and/or other signals in one to four separate tanks
- ◆ **Self-Powered** – lithium battery with a 10-year shelf life for long service life.
- ◆ **Audible Alarm** – sounds a 90-decibel alarm at 4 feet away
- ◆ **Visual Notifications** – red alarm light will flash during use for notification to the user. Low-battery light indicates when battery needs to be replaced
- ◆ **Corrosion-Resistant Construction** – petroleum and environmental resistant housing and all-stainless-steel pipe fitting ensure long product life
- ◆ **Product/Alarm Identification Label** – located on top of the alarm for quick and easy identification, allowing you to correspond alarms to signals. Label has a protective covering
- ◆ **Intrinsically Safe** – complies with ANSI/UL 913 for Class 1, Division 1 & 2 for Groups C & D hazardous locations
- ◆ **Cold-Weather Resistant** – all components are safe for temperatures down to -40°F operation (and up to 120° F)
- ◆ **Long-Life Lithium Battery** – self-powered by a lithium battery which includes a 10-year shelf life to ensure peace of mind for the owner
- ◆ **Easy Installation** – requires no calibration and installs easily into a 1" tank bung. May be assembled remotely or directly on top of tank



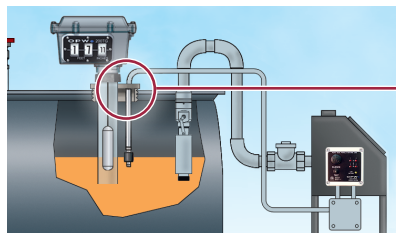
TGTA-0400 4" Tank Bung
Combo Fitting
Note: Drop Tube must be
used with TGTA-0400.

444TA and 144TA Instruction Sheet
Order Number: 200655

Ordering Specifications:

Product #	Description	lb.	kg
444TA-0100*	Four Signal Tank Alarm, does not include Float Switch	4	1.8
44TA-LLFS**	36" Liquid-Level Float Switch Sub-Assembly	0	0.0
144TA-0100	Single Channel Liquid Level Tank Alarm, does not include Float Switch	4	1.8
TGTA-0400	4" Tank Bung Gauge and Alarm Combo Fitting (OPW 61T required for use)	10	4.5

**The OPW 144TA Requires the OPW 44TA-LLFS, the OPW 44TA-LLFS must be purchased as a separate item.



Replacement Parts:

Part #	Description
44TA-LLFS	Liquid-Level Float Switch ASSY
H15412M	Wire Fitting
H15411M	Float Switch
Items to Convert to a Low Level Alarm:	
C05295M	SST Tube
H15937M	444TA-0100 Battery Module
202891	144TA Battery Module

OPW 444TA AST Four-Signal Tank Alarm and OPW 144TA AST Liquid-Level Tank Alarm

The OPW AST remote Four-Signal Tank Alarm is designed to sense up to four different liquid-levels or other signals using just one device.

The OPW 144TA Tank Alarm is designed for liquid-level sensing.

Alarm Technical Information:

Hazardous Location Approval: Class I, Groups C & D

Maximum Voltage: 7.2 Volts

Maximum Current: 8 ma. per input (32 ma. total)

Maximum Internal Capacitance: 23 uF

Maximum Internal Inductance: 33 mH

Maximum Ambient Temperature Rating: 60° C

Maximum Surface Temperature Classification:

T4 Surface Code

Wiring limitations: 1000-foot maximum between the 144TA/444TA unit and any remote switch for each channel of the alarm. This assumes that maximum capacitance for any input is 60 nanoFarads and that the maximum inductance is 0.2 milliHenry per input (UL-913 A7.3)

Note: This device is designed to work independently and should not be wired in parallel with another device, except as defined in the following instructions.

Requirements for devices wired to the 144TA/444TA:

- Attached wiring and devices must be classed Intrinsically Safe
- No voltage or current source
- Maximum capacitance: 60 nanoFarads (.06 uF) per input
- Maximum inductance: 200 microHenrys (.2 mH) per input

Float Switch Technical Information:

Minimum liquid specific gravity: 0.45.

Stem material: Stainless steel. Float Material: Closed-Cell

Buna-N (UL Approved) for gasoline services

Max Pressure: 150 psi @ 70° F. Thread 1/8" NPT.

444TA Dimensions:

	in.	cm
A	5 1/32	12.8
B	5 1/32	12.8
C	4 3/16	10.6

144TA Dimensions:

	in.	cm
A	5 1/32	12.8
B	5 1/32	12.8
C	3	7.6
D	4 3/16	10.6
E	1 15/16	4.9
F	35	88.9
G	1 15/16	4.9
H	1	2.5

Approvals and Listings



Conforms to ANSI / UL STD 913
Certified to CAN / CSA STD C22.2 No. 157-92
Florida EQ-610