

Piping Layout (Pressure System)

Tank Sumps, Tank Sump Systems and Accessories

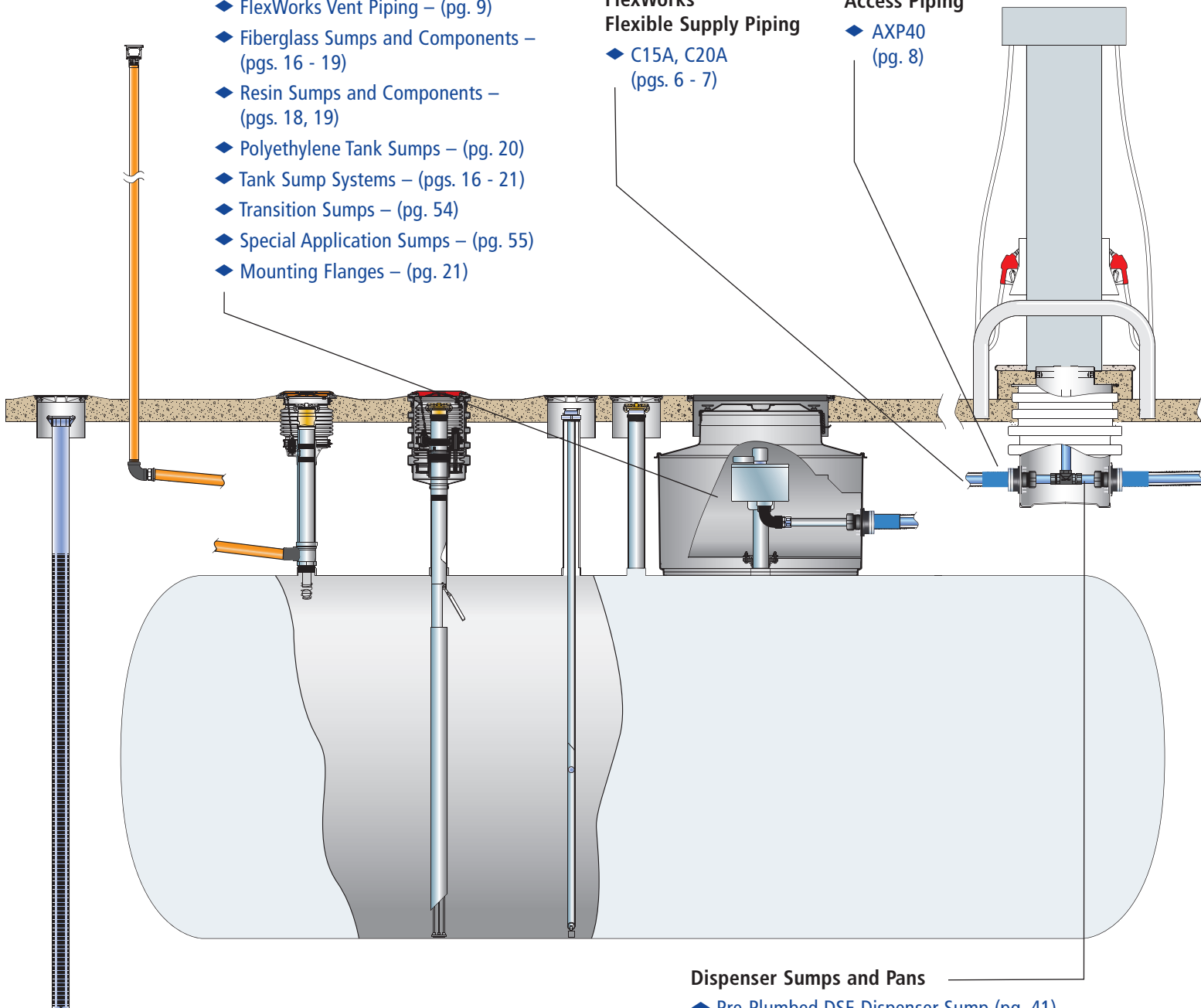
- ◆ FlexWorks Vent Piping – (pg. 9)
- ◆ Fiberglass Sumps and Components – (pgs. 16 - 19)
- ◆ Resin Sumps and Components – (pgs. 18, 19)
- ◆ Polyethylene Tank Sumps – (pg. 20)
- ◆ Tank Sump Systems – (pgs. 16 - 21)
- ◆ Transition Sumps – (pg. 54)
- ◆ Special Application Sumps – (pg. 55)
- ◆ Mounting Flanges – (pg. 21)

FlexWorks Flexible Supply Piping

- ◆ C15A, C20A (pgs. 6 - 7)

Access Piping

- ◆ AXP40 (pg. 8)

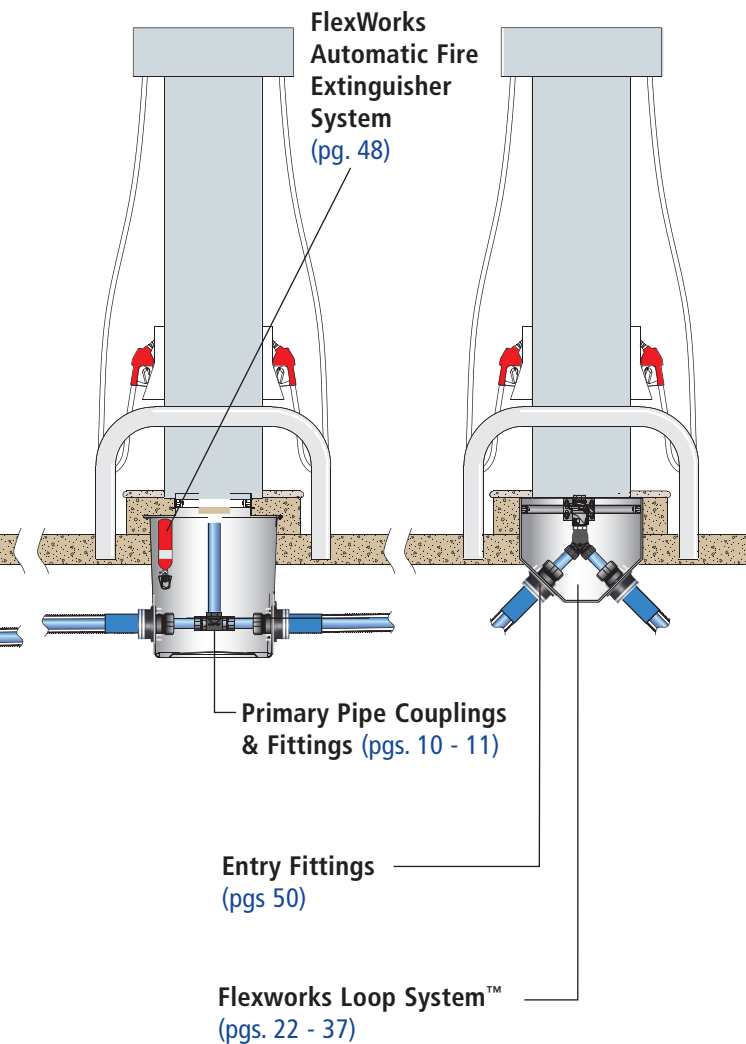


Dispenser Sumps and Pans

- ◆ Pre-Plumbed DSE Dispenser Sump (pg. 41)
- ◆ Wide-Access Polyethylene (pg. 43)
- ◆ Polyethylene Pans (pg. 45)
- ◆ DSE Dispensing Sump (pg. 40)
- ◆ Wide-Access Fiberglass (pg. 42)
- ◆ Dispenser Sump Accessories (pg. 47)
- ◆ Dispenser Sump Selection Chart (pgs. 38 - 39)
- ◆ DEF Containment Sumps (pg. 46)

FlexWORKS

The complete Environmental System
for underground fuel transfer and
containment for the 21st century.



OPW Innovative Fueling Solutions

The heart of FlexWorks is an advanced, flexible piping system that can be installed quickly and easily in a variety of configurations. Flexible piping eliminates the need for buried piping joints, which are notorious leak points in rigid piping systems. In a pressure system, the submersible pump is connected in series directly to the dispensers with a continuous run of flexible pipe. In a suction system, a continuous run of flexible pipe connects the tank to the suction pump dispenser. All piping connections at the tank and dispensers are contained in sumps.

The primary fuel pipe is available with an integral secondary containment pipe, which can be inserted into a dual-layer, corrugated access pipe. The crush-resistant access pipe protects the primary pipe from the backfill while serving as an added layer of protection. The access pipe also affords the added advantage of primary pipe retractability. Future inspection, repair or replacement of the primary pipe is achievable without excavation.

The FlexWorks System features highly integrated components that interconnect seamlessly to provide reliable secondary containment. FlexWorks dispenser sumps are custom made for each particular dispenser footprint. FlexWorks tank sumps afford raintight containment for and accessibility to submersible pumps and UST equipment. A variety of FlexWorks entry fitting styles and sizes ensure the availability of a custom-designed solution for virtually every piping application.

FlexWorks by OPW is the complete Environmental System for underground fuel transfer and containment for the 21st century.

**Listings and
Certifications**



FlexWorks Supply Piping

Why flex pipe?

OPW developed FlexWorks pipe in response to customer feedback. You asked and we delivered! The pipe is more flexible, lighter and has reduced memory. Pipe can also be replaced without breaking concrete.

Elimination of potential underground leak points

- ◆ No underground fittings or joints
- ◆ No hand-built field joints
- ◆ All termination points are contained safely inside sumps
- ◆ Termination joints are precision coupled to simulate factory-made assemblies

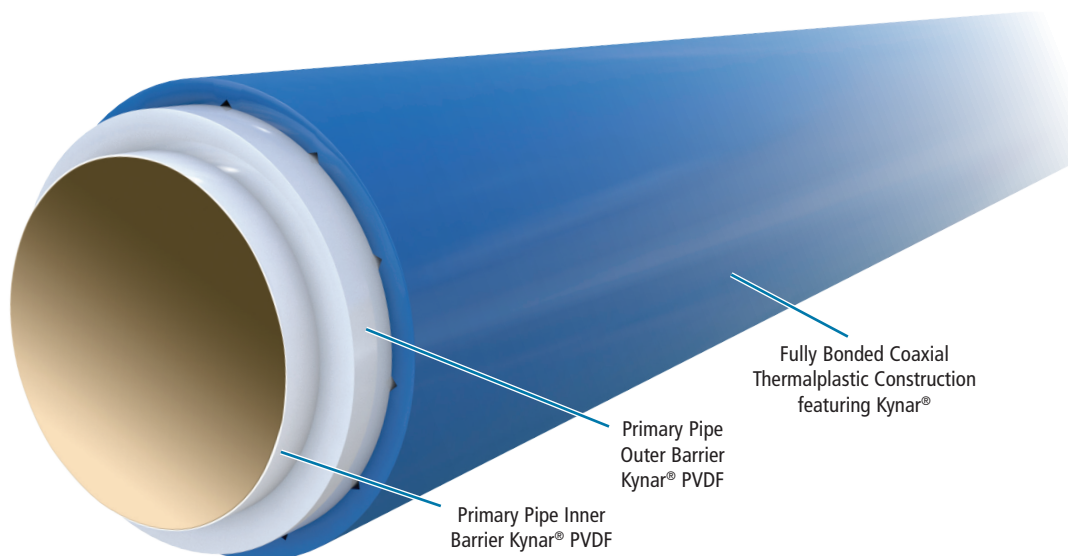
Light, Flexible & Easy to Install. ULc Approved for All Fuels

ULc APPROVAL

- ✓ Motor Vehicle Fuels
- ✓ High Blend Fuels
- ✓ Concentrated Fuels
- ✓ Aviation and Marine

FlexWORKS

THE WORLD'S MOST SPECIFIED FLEXIBLE FUEL-TRANSFER PIPE



What Makes This Pipe Different? Lower installation costs

- ◆ Eliminates the hassles – installation time and potential leak points of rigid pipe installations
- ◆ Fast and easy installation – results in less installation labor, time and cost
- ◆ Eliminates burdensome cutting, fitting, and cleaning
- ◆ No adhesives – heat assists, curing problems or electrofusion welding of joints
- ◆ Easy to bend – no special fittings to install in order to make bends

Double-Wall Flexible Vent Piping: UL971-Listed, Integral Primary/Secondary, Normal Vent & Vapor Piping, Gasoline, Aviation & Marina Fuels:

A UL-listed, double-wall, flexible supply piping system is designed for installation within access piping (not required but recommended). The outer containment pipe includes inner stand-off ribs to create a small interstitial space which allows for optimum fluid migration, continuous monitoring and easy periodic testing. This piping features an enhanced construction that meets the new UL971 standard. OPW's FlexWorks double-wall piping has both the primary and secondary containment pipe UL-listed and is labeled as follows:
INTEGRAL PRIMARY/SECONDARY FOR MOTOR VEHICLE FUELS.

Flexible Piping Manual Order
Number: UPM-0001

FlexWorks Supply Piping

OPW's FlexWorks Pipe is more flexible, lighter and has reduced memory to aid installation and is UL approved for all fuels.

Ordering Specifications - Sizing Matrix

Double Wall Pipe									
Part #	Description	Packaged		Box/Reel Size		Box/Reel Weight		Specifications	
				In.		lbs.	kg		
C075A-250	3/4" Double Wall Primary Pipe	250 ft	Box	44x44x25		134	61		
C075A-1000	3/4" Double Wall Primary Pipe	1000 ft	Reel	58x58x48		527	239		
C075A-CLXXX	3/4" Double Wall Primary Pipe	10-990 ft	Box					Custom Box/ Reel 10-990 ft (XXX enter feet in 10 ft increments)	
C10A-250	1" Double Wall Primary Pipe	250 ft	Box	44x44x25		169	77		
C10A-1000	1" Double Wall Primary Pipe	1000 ft	Reel	58x58x48		605	724		
C010A-CLXXX	1" Double Wall Primary Pipe	10-990 ft	Box					Custom Box/Reel 10-990 ft (XXX enter feet in 10 ft increments)	
C15A-250	1.5" Double Wall Primary Pipe	250 ft	Reel	38x45x30		240	109		
C15A-350	1.5" Double Wall Primary Pipe	350 ft	Reel						
C15A-375	1.5" Double Wall Primary Pipe	375 ft	Reel						
C15A-500	1.5" Double Wall Primary Pipe	500 ft	Reel	58x58x48		605	274		
C15A-1000	1.5" Double Wall Primary Pipe	1000 ft	Reel	58x58x48		980	444		
C15A-1400	1.5" Double Wall Primary Pipe	1400 ft	Reel						
C15A-1225	1.5" Stick Pipe Double Wall - 25 ft	25 ft each	12 per Box					Sold Box of 12 – Minimum order 300 ft	
C15A-1228	1.5" Stick Pipe Double Wall - 28 ft	28 ft each	12 per Box					Sold Box of 12 – Minimum order 336 ft	
C15A-1230	1.5" Stick Pipe Double Wall - 30 ft	30 ft each	12 per Box					Sold Box of 12 – Minimum order 360 ft	
C15A-1233	1.5" Stick Pipe Double Wall - 33 ft	33 ft each	12 per Box					Sold Box of 12 – Minimum order 396 ft	
C15A-1240	1.5" Stick Pipe Double Wall - 40 ft	40 ft each	12 per Box					Sold Box of 12 – Minimum order 480 ft	
C20A-250	2" Double Wall Primary Pipe	250 ft	Reel	63x63x33		192	87		
C20A-375	2" Double Wall Primary Pipe	375 ft	Reel						
C20A-500	2" Double Wall Primary Pipe	500 ft	Reel	68x68x48		770	349		
C20A-800	2" Double Wall Primary Pipe	800 ft	Reel						
C20A-1225	2" Stick Pipe Double Wall - 25 ft	25 ft each	12 per Box					Sold Box of 12 – Minimum order 300 ft	
C20A-1228	2" Stick Pipe Double Wall - 28 ft	28 ft each	12 per Box					Sold Box of 12 – Minimum order 336 ft	
C20A-1230	2" Stick Pipe Double Wall - 30 ft	30 ft each	12 per Box					Sold Box of 12 – Minimum order 360 ft	
C20A-1233	2" Stick Pipe Double Wall - 33 ft	33 ft each	12 per Box					Sold Box of 12 – Minimum order 396 ft	
C30A-100	3" Double Wall Primary Pipe	100 ft	Reel						
C30A-250	3" Double Wall Primary Pipe	250 ft	Reel	63x63x33		192	87		
C30A-375	3" Double Wall Primary Pipe	375 ft	Reel						
C30A-500	3" Double Wall Primary Pipe	500 ft	Reel	68x68x48		770	349		
C30A-600	3" Double Wall Primary Pipe	600 ft	Reel						
C30A-0522	3" Stick Pipe Double Wall - 22 ft	22 ft each	Box					Sold Box of 5 - Minimum order 110 ft	
C30A-0528	3" Stick Pipe Double Wall - 28 ft	28 ft each	Box					Sold Box of 5 - Minimum order 140 ft	

Double Wall Vent Pipe											
V20-250	2" Double Wall Vent Pipe		250 ft	Reel							
V20-500	2" Double Wall Vent Pipe		500 ft	Reel							
Product #	Size		Description	Minimum Bend Radius		Working Pressure		Temperature Rating		Burst Pressure	Max Vacuum for Suction
	in.	cm		in.	mm	PSIG	Bar	F	C		
C075A	¾	1.9	Double-Wall Primary Pipe	18	457	145	10 bar	-20° to +120° F	-29° to +49° C	Exceeds 5X Working Pressure	26" of Mercury for All Pipe
C10A	1	2.54	Double-Wall Primary Pipe	18	457	125	8.6 bar				
C15A	1.5	3.8	Double-Wall Primary Pipe	24	610	100	6.9 bar				
C20A / V20	2	5	Double-Wall Primary Pipe / Vent Pipe	36	914	75	5 bar				
C30A	3	7.6	Double-Wall Primary Pipe	72	1828	75	5 bar				

Note: Discounted short runs available while supplies last. Please contact Customer Service for availability and pricing.
 * OPW also offers short and custom lengths of pipe, as well as pipe packaged and shipped on Mega Reels. Please contact our Customer Service department at 1-800-422-2525, or visit us on the web at www.opwglobal.com for the most up-to-date information.

Listings and Certifications



Access Pipe

A 4" or 6" diameter corrugated flexible conduit is used to provide access to and permit the future replacement of the flex piping if desired. This corrugated pipe is strong enough to withstand H-20 loading requirements when properly buried and thick enough to minimize damage from shipping and jobsite handling. Access pipe can accommodate the 3/4", 1", 1-1/2", 2" and 3" FlexWorks supply pipe.

Features & Benefits:

- ◆ Crush and puncture-resistant
- ◆ Semi-smooth liner facilitates ease of installation
- ◆ Saves you time and money
- ◆ No buried joints



Ordering Specifications - FlexWorks Access Pipe

Part #	Application	Minimum Bend Radius		Packaging		Dimensions				Box Size	Weight	
						I.D.		O.D.				
		in.	mm			in.	mm	in.	mm	in.	lbs.	kg
AXP40-100	4" Dual Layer Access Pipe	18"	457	Box	100 ft.	4	102	4.760	121.0	42x42x32	115	52
AXP40-250	4" Dual Layer Access Pipe	18"	457	Box	250 ft.	4	102	4.760	121.0	60x60x32	218	99
AXP60-500	6" Access Pipe	36"	914	Box	500 ft.	6	152	7.100	180.0	96x60x32	485	220
AXP60-100	6" Access Pipe	36"	914	Box	100 ft.	6	152	7.100	180.0	48x48x32	125	57
AXP40-Connect	4" Connection Boot										1	

Access Pipe Installation Instructions Sheet Order Number: **API-0001**

FlexWorks Vent Piping

Why flex pipe for venting?

OPW developed FlexWorks Vent Pipe in response to customer feedback and alternatives to FRP vent piping. You asked and we delivered! The pipe is more flexible, lighter and has reduced memory. Our vent pipe is available with the typical short lead times you have come to enjoy from OPW!

Elimination of potential underground leak points

- ◆ Continuous piping runs between tank and vent stacks
- ◆ No hand-built field joints
- ◆ Stainless-steel fittings for worry-free corrosion resistance
- ◆ Can be used with either OPW 2" DPC swage-on or SBC bolt-on double-wall couplings

Light, Flexible & Easy to Install. ULc Approved for Venting with All Fuels

ULc APPROVAL

- Motor Vehicle Fuels
- High Blend Fuels
- Concentrated Fuels
- Aviation and Marine

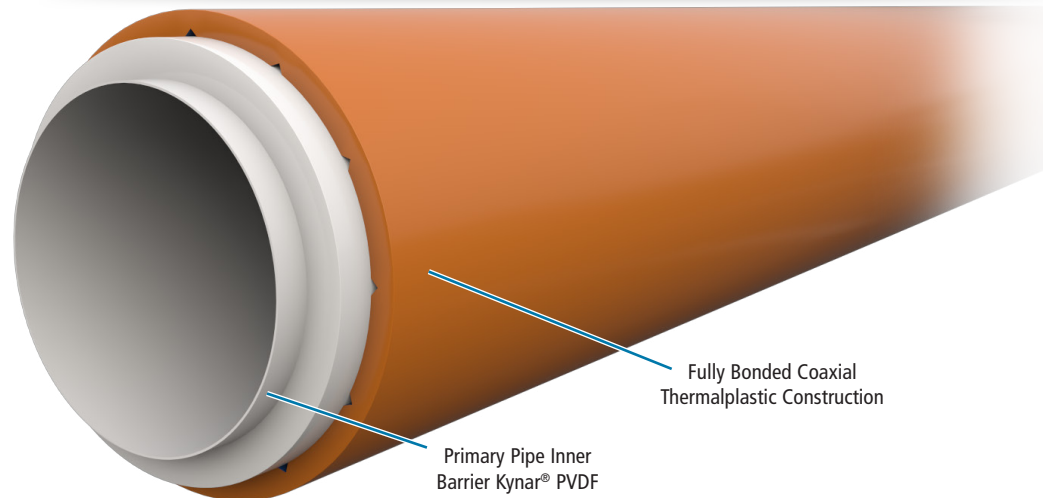
Ordering Specifications - Sizing Matrix

Double Wall Vent Pipe

Part #	Description	Packaged	
V20-250	2" Double Wall Vent Pipe	250 ft	Reel
V20-500	2" Double Wall Vent Pipe	500 ft	Reel

FlexWORKS

Celebrating More Than 25 Years of Success Through Piping Excellence



What Makes This Pipe Different? Lower installation costs

- ◆ Eliminates the hassles – installation time and potential leak points of rigid pipe installations
- ◆ Fast and easy installation – results in less installation labor, time and cost
- ◆ Eliminates burdensome cutting, fitting, cleaning, gluing or welding
- ◆ No adhesives – heat assists, curing problems or electrofusion welding of joints
- ◆ Easy to bend – no special fittings to install in order to make bends
- ◆ Vent Pipe Kit to seal off interstitial testing port when directly burying DW fittings

Double-Wall Flexible Vent Piping: UL971-Listed, Integral Primary/Secondary, Normal Vent & Vapor Piping, Gasoline, Aviation & Marina Fuels:

A UL-listed, double-wall, flexible supply piping system is designed for installation within access piping (not required but recommended). The outer containment pipe includes inner stand-off ribs to create a small interstitial space which allows for optimum fluid migration, continuous monitoring and easy periodic testing. This piping features an enhanced construction that meets the new UL971 standard.

OPW's FlexWorks double-wall piping has both the primary and secondary containment pipe UL-listed and is labeled as follows:

INTEGRAL PRIMARY/SECONDARY FOR MOTOR VEHICLE FUELS.

Double-Wall Swivel Pipe Couplings

Double-Wall Swivel Pipe Couplings are a proven coupling and fitting system designed exclusively for use with FlexWorks Piping.

Double-wall swivel couplings and fittings are a double-wall design and are used to interconnect FlexWorks flexible piping. These UL/ULC listed stainless-steel couplings must be contained within containment sumps and not directly buried.

This pipe-connection system includes an internally expanded stainless-steel coupling attached to the end of a FlexWorks pipe section. The swivel coupling has a smooth sealing face fitted with a Viton® ring gasket.

Double-wall swivel couplings eliminate the need for cutting back the secondary jacket and rubber test boots. They have an integral interstitial access port for connector and test tubes.

These double-wall couplings permit higher interstitial testing pressures and eliminate added parts and labor costs.



Double-Wall Pipe Coupling (DPC Model)

Double-wall pipe couplings require the use of an OPW Retail Fueling coupling machine to internally expand the stainless-steel fitting onto the end of a FlexWorks pipe section.

Internally expanded couplings have a long, successful history of reliable performance.

Features & Benefits:

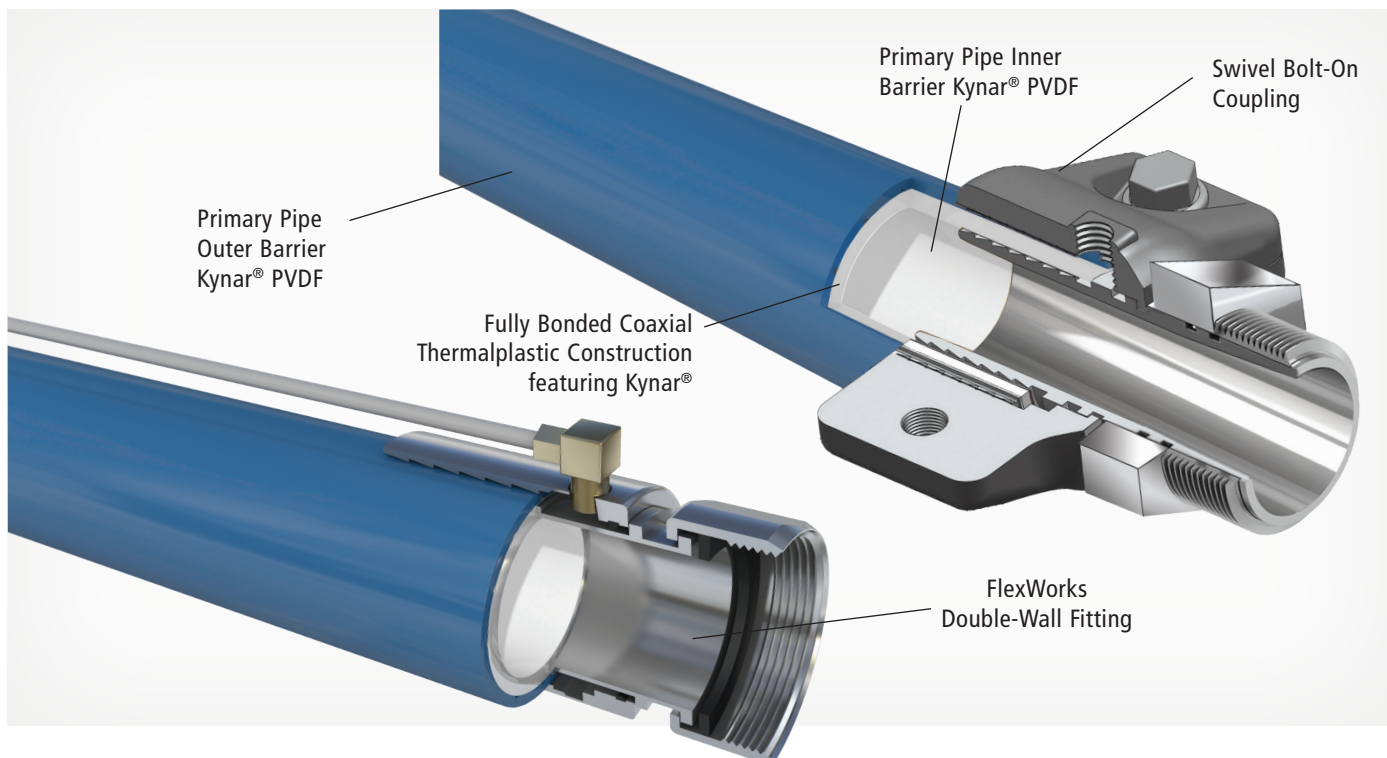
- ◆ UL/ULC listed for use with flex piping
- ◆ Quick, easy to install
- ◆ All stainless-steel couplings
- ◆ Internally expanded couplings
- ◆ Permanent Interstitial Test Port

3" Double-Wall Coupling

- ◆ Fully compatible with our 3" FlexWorks Piping
- ◆ Interstice integrated with the pipe secondary

Ordering Specifications - FlexWorks Double-Wall Swivel Couplings & Fittings

Part #	Application	Weight	Packaging
DPC-2150A	1.5" Double-Wall Swivel Pipe Coupling, Flat Gasket	1.05	EA
DPC-2200A	2" Double-Wall Swivel Pipe Coupling, Flat Gasket	1.35	
DPC-2300A	3" Double-Wall Swivel Pipe Coupling, Flat Gasket	2.35	





Double-Wall Pipe Coupling (DPC Model)



Adaptor (SMA Model)



Tee (STF Model)



Elbow (SEF Model)

Ordering Specifications* - FlexWorks Swage-On Couplings and Fittings

For single-wall fittings contact customer service at 1-800-422-2525.

Model	Application	Weight/ lbs
DPC-2150A	1.5" Double Wall Swivel Pipe Coupling, Flat Gasket	1.05
DPC-2200A	2" Double Wall Swivel Pipe Coupling, Flat Gasket	1.35
DPC-2300A	3" Double Wall Swivel Pipe Coupling, Flat Gasket	2.35
SFA-7575	3/4" Adaptor, 3/4" Female NPT to 3/4" Female NPT	.35
SMA-7575	3/4" Adaptor, 3/4" Female NPT to 3/4" Male NPT	.50
SFA-1010	1" Adaptor, 1" Female NPT to 1" Female NPT	.60
SMA-1010	1" Adaptor, 1" Male NPT to 1" Female NPT	.55
SMA-1515	1.5" Adaptor, 1.5" NPSH to 1.5" NPT	1.10
SMA-1520	1.5" Adaptor, 1.5" NPSH to 2" Male NPT	1.30
SMA-2020	2" Adaptor, 2" NPSH to 2" Male NPT	1.25
SMA-3030	3" Adaptor, 3" NPSH to 3" NPT	2.50
STF-1515	1.5" Tee, 1.5" NPSH x 1.5" NPSH x 1.5" NPT	2.20
STF-2020	2" Tee, 2" NPSH x 2" NPSH x 2" NPT	4.25
STF-2215	2" Tee, 2" NPSH x 2" NPSH x 1.5" NPT	4.32
STF-3030	3" Tee, 3" NPSH x 3" NPSH x 3" NPT	5.70
STC-0150	1.5" Swivel Test Cap	1.0
STC-0200	2" Swivel Test Cap	1.2
STC-0300	3" Swivel Test Cap	3.65

Model	Application	Weight/ lbs
SEF-1515	1.5" Elbow, 1.5" NPSH x 1.5" NPT	1.50
SEF-2020	2" Elbow, 2" Female NPT to 2" Male NPSH*	2.60
SEF-3030	3" Elbow, 3" NPSH x 3" NPT	4.10
SRE-2015	2" Elbow Reducer, 2" NPSH x 1.5" NPT	2.85
SCC-2015	2" Reducer, 2" NPSH to 1.5" NPSH	3.00
SRT-2151	2" Reducer, 2" NPSH x 1.5" NPSH x 1.5" NPT	3.00
SCC-1515	1.5" Connector, 1.5" NPSH to 1.5" NPSH	0.75
SCC-2020	2" Connector, 2" NPSH to 2" NPSH	1.00
SCC-3030	3" Connector, 3" NPSH to 3" NPSH	1.50
SGP-0150	1.5" Swivel Gasket Pack for DPC-2150A (6 ea.)	.05
SGP-0200	2" Swivel Gasket Pack for DPC-2200A (6 ea.)	.10
SGP-0300	3" Swivel Gasket Pack for DPC-2300A (6 ea.)	.15
SGP-0150FG	1.5" Swivel Gasket Fluorosilicone Pack (6 ea.)	.05
SGP-0200FG	2" Swivel Gasket Fluorosilicone Pack (6 ea.)	.10
SGP-0300FG	3" Swivel Gasket Fluorosilicone Pack (6 ea.)	.15
VP-KIT	1/8" NPT Stainless-steel Plug (8 ea.)	1.00

Listings and Certifications



OPW 21BV Full Port Two-Way Ball Valve

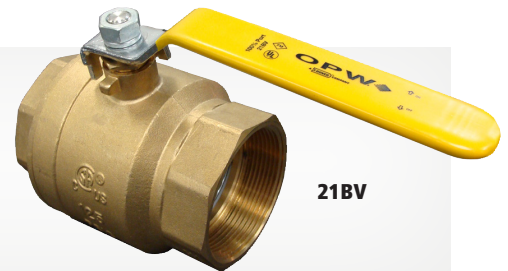
OPW Ball Valves are used throughout fueling systems where a shut-off point is desirable to isolate a section of the piping system. These full-port, forged-brass valves feature a manual open-close arm and a quick quarter-turn handle, allowing easy shut down of your AST or UST system. Compatible with gasoline, alcohol fuels, diesel and MTBE. Available with Lockable Handle (LH).

Ordering Specifications and Dimensions

Dimensions (in.)					
Model #	Size (in.)	A	B	C	D
21BV-0075	3/4	0.78	2.51	2.36	4.29
21BV-0150	1 1/2	1.57	3.87	2.72	5.63
21BV-0200	2	1.96	4.29	3.03	5.63
21BV-0200SS*	2	1.96	4.80	3.66	7.09
21BV-0300	3	3.15	6.10	5.12	8.35
*SS denotes Stainless-steel.					
202234	Lockable Handle Kit for 3/4" and 1" Models (Handles sold separately)				
202235	Lockable Handle Kit for 1-1/2" and 2" Models (Handles sold separately)				

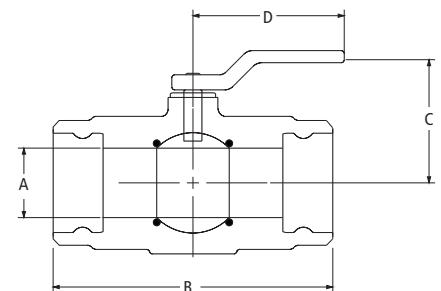
Materials

Body: Brass
Ball: Hard chrome plated
Seal: Teflon®



Features

- ◆ Pressure rated to 600 psig (41 bar) WOG
- ◆ Blowout-proof stem
- ◆ Chrome-plated brass ball
- ◆ Secondary O-ring stem seal
- ◆ PTFE seats, thrust bearing and stem packing



OPW Retail Fueling Introduces a Next Generation of Swivel Bolt-On Couplings

Announcing our revolutionary new SBC Swivel Bolt-On Double-Wall Pipe Coupling. The new patent-pending technology gives users the same great features as our revolutionary DPC swage-on double-wall fittings in a bolt-on design. The SBC eliminates the need to trim back the secondary jacket – and eliminates the need for rubber test boots!

Features and Benefits

- ◆ All Stainless-Steel Wetted Surfaces
- ◆ No Jacket Stripping
- ◆ No Test Boots
- ◆ Male NPT thread allows this coupling to be used with standard plumbing Tees and Elbows
- ◆ Decreased installation time
- ◆ Provides quick and effective means to monitor or retest secondary containment
- ◆ State-of-the-art clamshell interlock design only available through OPW
- ◆ Double O-ring swivel design for easy and secure connections



New patent-pending Swivel Bolt-On Coupling system simplifies the interstitial connection process for FlexWorks Flexible Piping.

Our new FlexWorks Swivel Bolt-On Coupling features permanent access to the pipe's interstice allowing for future integrity testing or continuous interstitial monitoring. Swivel Bolt-On Couplings have an integral interstitial fluid path and a threaded access port located directly on

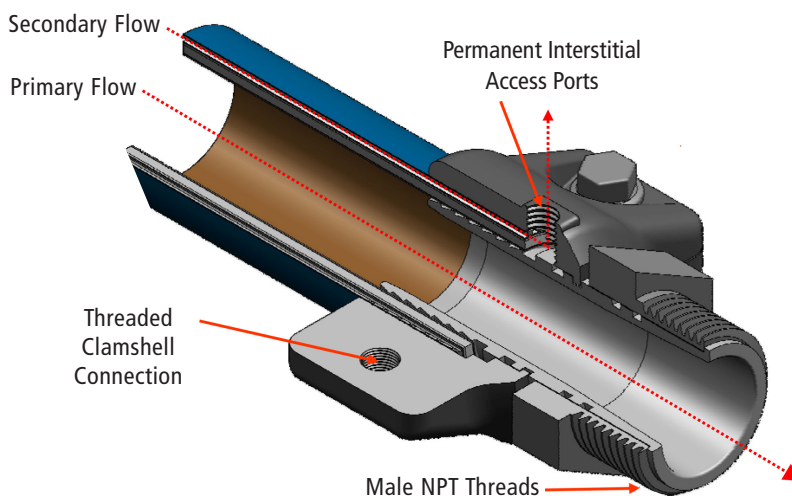
the coupling collar. This state-of-the-art method of connection is a cost-effective solution that allows rapid system integrity testing as well as interstitial monitoring capability, at installation and in the future to accommodate new monitoring regulations.

Ordering Specifications Swivel Bolt-On Coupling

Model	Description
SBC-2075	Swivel Bolt-On Coupling, 3/4" NPT
SBC-2100	Swivel Bolt-On Coupling, 1" NPT
SBC-2150	Swivel Bolt-On Coupling, 1.5" NPT
SBC-2200	Swivel Bolt-On Coupling, 2" NPT

Ordering Specifications Replacement Gasket Kits

Model	Description
BGP-2075	3/4" Pack of (6) incl. pads & O-rings
BGP-2100	1" Pack of (6) incl. pads & O-rings
BGP-2150	1.5" Pack of (6) incl. pads & O-rings
BGP-220	2" Pack of (6) incl. pads & O-rings



Installation Tools Coupling Machines

The OPW Coupling Machine is required for the installation of both coax and swivel pipe couplings. The Coupling Machine is designed to internally expand the metal pipe insert installed at the end of a flexible pipe section. Coupling machines are available in both 110- and 220-volt models. Coupling swage kits are available to couple both coax and swivel couplings for a variety of pipe sizes.

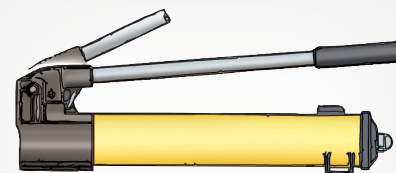
***IMPORTANT:** When coupling 3/4" and 1" pipe, use the faceplate for the CSK-0150S swage kit as a base for the CSK-0075S and the CSK-0100S swage kits.

Manual, Pneumatic and Electronic Coupling Machines

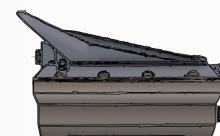
The OPW Manual, Pneumatic and Electronic Coupling Machines can couple stainless-steel (SSPFC), Swivel (SPC) and Double-Wall (DPC) fittings for 1.5" and 2" only. Swage kits are required.

Ordering Specifications Coupling Machine

Model	Application
CMM-200	Coupling Machine, Manual
CMP-200	Coupling Machine, Pneumatic
CME-200	Coupling Machine, Electronic



Manually Operated Coupling Machine
(CMM-200)



Pneumatic Coupling Machine
(CMP-200)



Coupling Machine, Electronic
(CME-200)

Swage Kits

Swages are used with the OPW Coupling Machine to internally expand the coupling onto the end of the flexible pipe section. There are a variety of coupling swage kits available to accommodate a variety of coupling types and sizes. NOTE: 3/4" and 1" swage kits adapt to the 1-1/2" swivel faceplate that comes standard with each coupling machine.

Swage Mandrel	Coupling Paired With:
CMS-0075	PC-0075
CMS-0100-A	SPC-0100
CMS-1500R	DPC-2150A, SPC-0150A
CMS-2000	DPC-2200A, SPC-0200A
CMS-3000	DPC-2300A, SPC-0300A

To be used with OPW Flexworks Piping. For previous generations, call OPW Retail Fueling customer service.

Ordering Specifications - Swage Kit

Fitting Type & Model #	Coupling Machine Model				
	CME-200	CMM-200	CMP-200	CME-0110/0110R	CME-0220
3/4" Swivel (SPC-0075)	SBA2-075	SBA2-075	SBA2-075	CSK-0075S	CSK-0075S
1" Swivel (SPC-0100)*	SBA2-100	SBA2-100	SBA2-100	CSK-0100S	CSK-0100S
1.5" Swivel (SPC-0150A)	SBA2-150	SBA2-0150	SBA2-0150	CSK-0150S	CSK-0150S
1.5" DW Swivel (DPC-2150A)	SBA2-150	SBA2-0150	SBA2-0150	CSK-0150S	CSK-0150S
2" Swivel (SPC-0200A)	SBA2-200	SBA2-0200	SBA2-0200	CSK-0200S	CSK-0200S
2" DW Swivel (DPC-2200A)	SBA2-200	SBA2-0200	SBA2-0200	CSK-0200S	CSK-0200S
3" Swivel (SPC-0300A)	SBA2-300	N/A	N/A	CSK-0300S	CSK-0300S
3" DW Swivel (DPC-2300A)	SBA2-300	N/A	N/A	CSK-0300S	CSK-0300S

Pipe Cutters

The FlexWorks pipe cutter is designed to produce a clean and even pipe cut, which is necessary for proper coupling attachment. This is required for installation of swivel pipe couplings.

The PCT 2000 makes it easy to cut through OPW FlexWorks pipe up to 2" with a clean, professional-quality finish. The Teflon®-coated hardened steel blade makes clean, burr-free cuts repeatedly, and the spring-loaded ergonomic handle provides a comfortable grip for extended use.

NOTE: When using double-wall pipe couplings, do not trim piping secondary.

Ordering Specifications- Pipe Cutter

Model #	Application
PCT-2000	3/4", 1", 1.5", 2"
PCT-3000	3" Pipe Cutter



PCT-2000 replaces legacy PCT-1000 cutter.

OPW recommends using a ratchet cutter for pipe sizes 3/4", 1", 1.5", 2".

Fishing Bullnose

An attachment for the end of a flexible pipe section, used to aid in fishing the flexible pipe section through the access pipe. There are a variety of bullnoses available to connect to swivel couplings.

NOTE: 3/4" and 1" fishing bullnose are female threaded to accommodate 3/4" or 1" couplings.



Ordering Specifications - Fishing Bull Nose

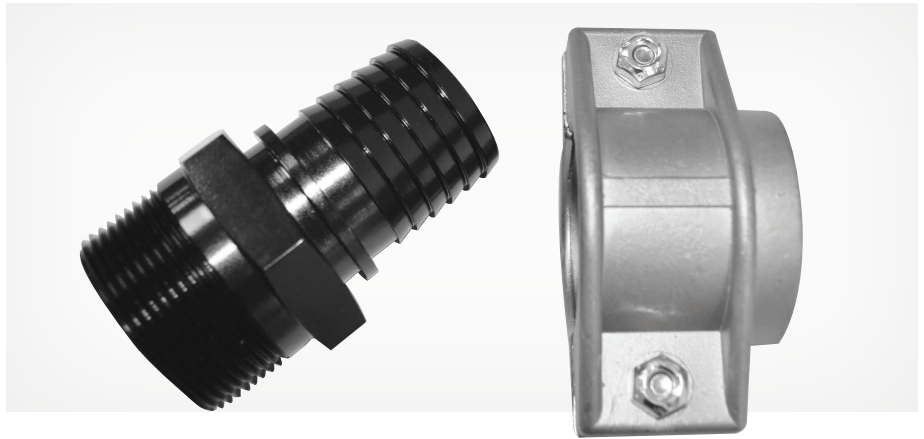
Model #	Application
FBN-2075	3/4" Fishing Bullnose
FBN-2100	1" Fishing Bullnose
FBN-2150	1.5" Fishing Bullnose
FBN-2200	2" Fishing Bullnose
FBN-3200	2" Bullnose Plug

Barbed Fittings and Adaptors for FlexWorks Primary Pipe

OPW Retail Fueling's barbed fittings are a single-wall design and are used to connect Flex or Vent piping. This piping-connection system does not require the use of pipe couplings or the OPW Retail Fueling coupling machine. These fittings should be contained within containment sumps or protected in direct-bury applications.

Barbed Male Adaptors

An adaptor is designed to connect one end of a flexible pipe section to a female NPT-threaded coupling or fitting. There is a barbed insert with a clamp assembly on one end and male NPT threads on the other. When used with double-wall FlexWorks piping, it is recommended that a reducer test boot be installed. These adaptors are required to be secondarily contained.



Features and Benefits

- ◆ For use with FlexWorks piping
- ◆ No coupling machine required
- ◆ All stainless-steel clamps
- ◆ Barbs are offset
- ◆ Interlock design

Ordering Specifications

Part #	Description
BMA-1515	NPT 1½" to 1½" Flex Pipe Barbed Male Adaptor
BMA-2020	2" Barbed Male Adaptor
BMA-3030	3" Barbed Male Adaptor

Urethane Sealant

An all-purpose sealant. Can be used as an entry fitting sealant as well as to bond dispenser tops.

Ordering Specifications - Urethane Sealant

Model #	Application
SL-1100	Urethane Sealant (10.3 oz. Cartridge)

OPW Offers a Variety of Tank Sump Models Made From Both Polyethylene and Fiberglass

OPW tank sumps function as a liquid-tight isolation container providing secondary containment for the tank fittings, valves, pumps and FlexWorks pipe fittings.

They also provide surface access to the tank itself, as well as a clean, dry environment for future service and maintenance. All tank sump models have height-adjustable risers to accommodate different tank burial depths. Each sump model has its own specific range of height adjustability and are fabricated and assembled at the job site.

ElectroTite Tank Sump



TSE Tank Sump



FibreTite Tank Sump



Polyethylene Tank Sump with Mechanically Fastened Cover



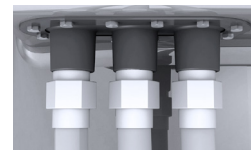
Tank Sump Manual
Order Number: **TSM-0001**

ElectroTite Tank Sump

Introducing the latest OPW tank sump innovation from the engineering labs of FlexWorks and Fibrelite. ElectroTite is the most watertight system on the market. It ships factory installed with conduit ports and electrical wiring box – eliminating unnecessary tank sump leak points at site installation. No drill, no water, no sweat.

Materials:

Sump: Resin Transfer Molding (RTM) technology



Uses built-in electrical seal-offs

ElectroTITE
NO DRILL DRY SUMP TECHNOLOGY*
*Patent Pending

Features & Benefits:

Watertight:

- ◆ Reduces the number of entry and leak points into sump
- ◆ Sealed conduit threads on outside of sump – enter above water table
- ◆ Factory-installed fitting with proper torque guns, cutting tools and sealing compound

Versatile for Your Installation:

- ◆ UL-listed explosion-proof junction box allows space to re-route communication wires and loop additional sensors without entering sump
- ◆ Shield allows for high-voltage and sensor wires to be separated in the same box
- ◆ Conduits can be potted entering box, exiting box, or both using built-in electrical seal-offs

- ◆ UL-listed explosion-proof box is single-piece cast aluminum, with bolt-on access cover

Factory Installed:

- ◆ Eliminates the need to cut holes in sump for conduits
- ◆ No field-installed conduit penetrations

FXSX - X - XXXXXX

FCS = FibreTite Conduit Sump

M = Medium bury

Only available on FCS

42 = 42" Sump Base Diameter

48 = 48" Sump Base Diameter

33 = 33" Sump Lid Diameter (WT-33)

37 = 37" Sump Lid Diameter (WT-37)

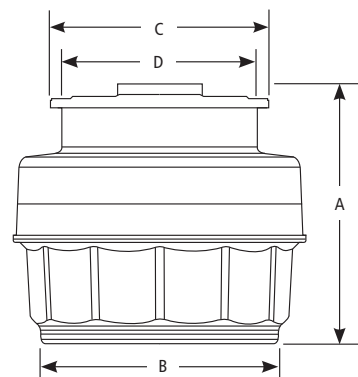
CR = Collar Ring Mount

SB = Solid Bottom

FTS = FibreTite Tank Sump

D = Deep bury

1 = One ElectroTite Conduit Box
2 = Two ElectroTite Conduit Boxes



Ordering Specs

Model Number	Sump Base Diameter	Max Sump Height (A)	Minimum Sump Height (B)	Sump Mount Design	Sump Lid Diameter (C)	Minimum Diameter Opening (D)	# of Conduit Boxes
FCSM-1-4233CR	42"	46"	39"	Collar Ring Mount	34.8"	29"	Single
FCSM-1-4233SB	42"	46"	39"	Solid Bottom	34.8"	29"	Single
FCSD-1-4233CR	42"	53"	47"	Collar Ring Mount	34.8"	29"	Single
FCSD-1-4233SB	42"	53"	47"	Solid Bottom	34.8"	29"	Single
FCSM-2-4233CR	42"	46"	39"	Collar Ring Mount	34.8"	29"	Dual
FCSM-2-4233SB	42"	46"	39"	Solid Bottom	34.8"	29"	Dual
FCSD-2-4233CR	42"	53"	47"	Collar Ring Mount	34.8"	29"	Dual
FCSD-2-4233SB	42"	53"	47"	Solid Bottom	34.8"	29"	Dual
FCSM-1-4837CR	48"	46"	39"	Collar Ring Mount	39.5"	34.6"	Single
FCSD-1-4837CR	48"	53"	47"	Collar Ring Mount	39.5"	34.6"	Single
FCSM-2-4837CR	48"	46"	39"	Collar Ring Mount	39.5"	34.6"	Dual
FCSD-2-4837CR	48"	53"	47"	Collar Ring Mount	39.5"	34.6"	Dual

Replacement Parts

Part Number	Sump Base Diameter
FTSMBASE-42CR	42" Medium Bury Collar Mount Base
FTSMBASE-42SB	42" Medium Bury Solid Bottom Base
FTSDBASE-42CR	42" Deep Bury Solid Collar Mount Base
FTSDBASE-42SB	42" Deep Bury Solid Bottom Base
FTSMBASE-48SB	48" Medium Bury Solid Base
FTSMBASE-48CR	48" Medium Bury Collar Mount
FTSDBASE-48CR	48" Deep Bury Collar Mount
FTS-4233TH	Top Hat for 42" Base Sump (33" opening)

Part Number	Sump Base Diameter
FTS-4237TH	Top Hat for 42" Base Sump (37" opening)
FTS-4837TH	Top Hat for 48" Base Sump (37" opening)
WT-33SL	33" Fibretite Sump Lid
WT-37SL	37" Fibretite Sump Lid
FCS42-EX12	42" Diameter Sump 12" Extension
FCS48-EX12	48" Diameter Sump 12" Extension

FibreTite Tank Sump

From the engineering labs of Flexworks and Fibrelite, OPW has made the best even better. Meet the newest member of the FibreTite Family of sumps, the most watertight sumps on the market today. Designed to meet all the new 2018 EPA UST regulations.

Materials:

Sump: Resin Transfer Molding (RTM) technology



FibreTITE
TANK SUMP

Features & Benefits:

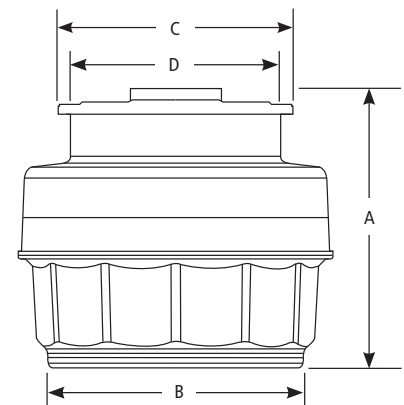
- ◆ The only sump manufactured using superior Resin Transfer Molding (RTM) technology. The RTM process utilizes a two-sided mold to ensure consistent wall thickness and exceptionally smooth wall surfaces inside and out for an ultra-tight entry fitting sealing surface
- ◆ Two-piece top-hat design allows for tailored height adjustments
- ◆ Inverted U-Channel allows for equal resin distribution, creating a superior bond between the base and the top hat to eliminate water intrusion
- ◆ Stainless-steel ring and watertight sealing gasket provide the proven seal-ability of our world-renowned Fibrelite sumps
- ◆ Available with and without bottom for collar or flange mounting
- ◆ Ergonomic "L-Handle" provides ease of use and a visual indicator that the handle is in the locked position and the watertight lid is secure

Ordering Specifications - Tank Sump Systems

	New Name	Sump Base Diameter	Max Sump Height (A)	Min Sump Height (B)	Sump Mount Design	Sump Lid Diameter (C)	Minimum Diameter Opening (D)	Additional RK-5000 Resin Kits Needed for Top Hat Attachment (Sold Separately)	Additional RK-5000 Resin Kits Needed for Collar Ring Attachment (Sold Separately)
42"	FTSM-4233CR	42"	46"	33.5"	Collar Ring Mount	34.8"	29"	1	1
	FTSM-4233SB	42"	46"	33.5"	Solid Bottom	34.8"	29"	1	-
	FTSD-4233CR	42"	53"	40.5"	Collar Ring Mount	34.8"	29"	1	1
	FTSD-4233SB	42"	53"	40.5"	Solid Bottom	34.8"	29"	1	-
	FTSM-4237CR	42"	46"	33.5"	Collar Ring Mount	39.5"	34.6"	1	1
	FTSM-4237SB	42"	46"	33.5"	Solid Bottom	39.5"	34.6"	1	-
	FTSD-4237CR	42"	53"	40.5"	Collar Ring Mount	39.5"	34.6"	1	1
	FTSD-4237SB	42"	53"	40.5"	Solid Bottom	39.5"	34.6"	1	-
48"	FTSM-4837CR	48"	46"	33.5"	Collar Ring Mount	39.5"	34.6"	1.5	1
	FTSD-4837CR	48"	53"	40.5"	Collar Ring Mount	39.5"	34.6"	1.5	1
	FTSM-4837SB	48"	46"	33.5"	Solid Bottom	39.5"	34.6"	1.5	-
	FTSD-4837SB	48"	53"	40.5"	Solid Bottom	39.5"	34.6"	1.5	-

Replacement Parts/Accessories

Part #	Description	Part #	Description
FTSMBASE-42CR	42" Medium Bury Collar Mount	WT-33SL	33" Fibretite Sump Lid
FTSMBASE-42SB	42" Medium Bury Solid Bottom	WT-37SL	37" Fibretite Sump Lid
FTSMBASE-48SB	48" Medium Bury Solid Bottom	FCS42-EX12	42" Diameter Sump 12" Extension (1 RK-5000 kit needed for attachment sold separately)
FTSMBASE-48CR	48" Medium Bury Collar Mount	FCS48-EX12	48" Diameter Sump 12" Extension (1.5 RK-5000 kit needed for attachment sold separately)
FTSDBASE-42CR	42" Deep Bury Medium Bury Collar	RK-5000	1 Quart Epoxy Resin Kit
FTSDBASE-42SB	42" Deep Bury Solid Bottom	S-CR-FGK	Optional Glassing Kit for Collar Ring Attachment
FTSDBASE-42SB	48" Medium Bury Solid Bottom		
FTSDBASE-48CR	48" Deep Bury Collar Mount		
FTS-4233TH	Top Hat for 42" Base Sump (33" opening)		
FTS-4237TH	Top Hat for 42" Base Sump (37" opening)		
FTS-4837TH	Top Hat for 48" Base Sump (37" opening)		



TSE Tank Sump

Using the same innovative Advanced Composite Technology as the DSE, OPW is proud to introduce the TSE Tank Sump.

The industry's first all fiberglass/composite containment system utilizing sheet molded compounds (SMC) to create a high-quality solution that quickly creates cost-effective peace of mind for retail petroleum operators.

Smooth Sides, Inside and Out

As the only manufacturer in the industry using Advanced Composite Technology, OPW's E-Series are the only fiberglass sumps with smooth walls on the inside and outside of the sump. Smooth sides bond better to prevent leaks and other maintenance needs.

Materials:

Body: Fiberglass

Cover/Lid: Fiberglass

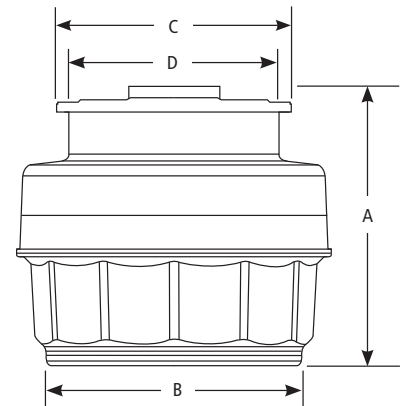
Water Tight Seal: Stainless-Steel/Nitrile

Compression Seal: Nitrile



Features & Benefits:

- ◆ The shortest lead times of any fiberglass sumps in the industry
- ◆ Consistent thickness and smooth surfaces for a watertight seal
- ◆ Built with legendary OPW quality, service, support and value
- ◆ Value-priced to compete against any fiberglass sumps on the market



Ordering Specifications - TSE Tank Sumps

Part Number	Sump Mount Design	Cover Style	A		B	C	D	Additional RK-5000 Resin Kits Needed for Top Hat Attachment (Sold Separately)	Additional RK-5000 Resin Kits Needed for Collar Ring Attachment (Sold Separately)
			Maximum Sump Height	Minimum Sump Height	Sump Base Diameter	Sump Lid Diameter	Minimum Diameter Opening		
TSE-4233CR*	Collar Ring	Compression	43"	30"	42"	34"	33"	1	1
TSE-4233SB*	Solid Bottom	Compression	43"	30"	42"	34"	33"	1	—
TSE-4233CR-WT	Collar Ring	Locking L Handles	45"	33.5"	42"	34"	29"	1	1
TSE-4233SB-WT	Solid Bottom	Locking L Handles	46"	33.5"	42"	34"	29"	1	—

*For Compression Style TSE Lids, (1) tube of SL-1100 is recommended for installation of seal.

Replacement Parts/Accessories

Part #	Description
TSEBASE-42CR	TSE 42" Medium Bury Collar Mount
TSEBASE-42SB	TSE 42" Medium Bury Solid Bottom
TSE-4233TH*	TSE Top Hat Compression Style
TSE-4233TH-WT	TSE Top Hat SS Ring - Locking L Handle
TSE-LID	TSE Lid - Compression Style
WT-33SL	TSE Lid - Locking L Handle
TSE-SEAL	TSE Seal Kit for TSE-4233CR and TSE-4233SB
216662	TSE Lid Center Handle (Used on TSE-LID and WT-33SL)
210474	TSE Lid Center Handle Screws (2 required)

*For Compression Style TSE Lids, (1) tube of SL-1100 is recommended for installation of seal.



Listings and Certifications



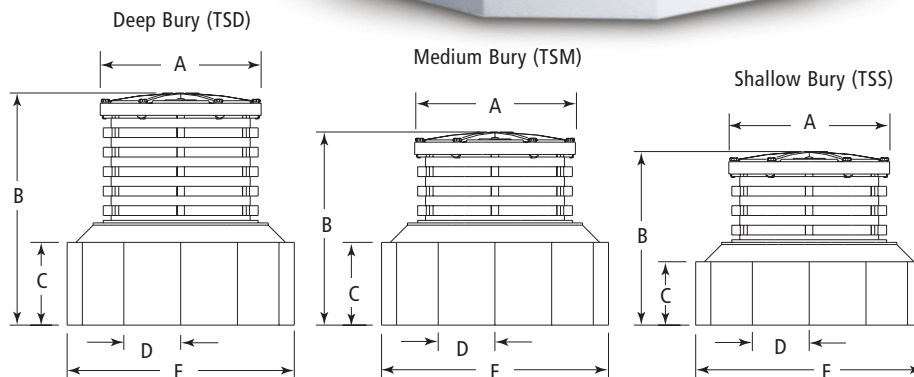
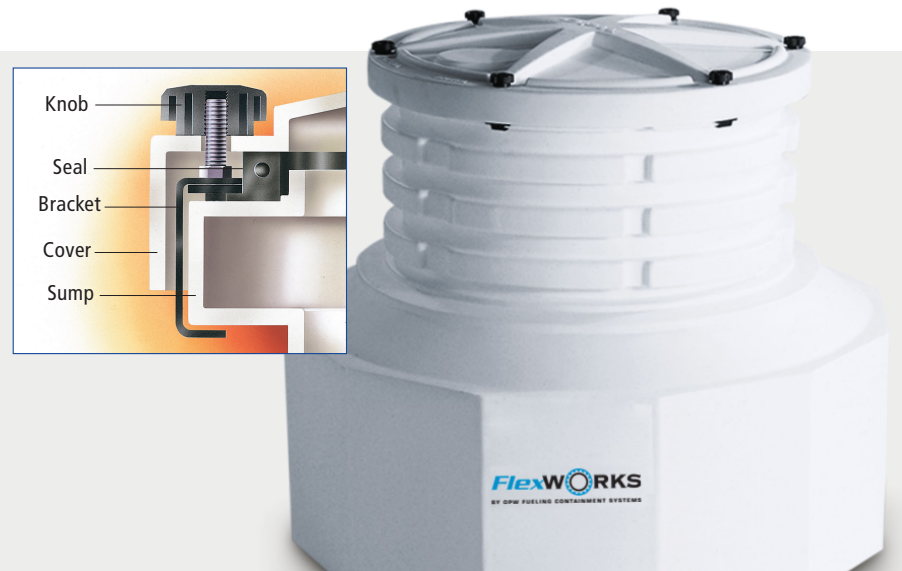
Polyethylene Tank Sumps with Mechanically Fastened Covers

Features & Benefits:

- ◆ **Long-Term Watertight Performance/Strength & Rigidity** – one-piece design provides reliable watertight integrity and long product life. Designed to resist deformation under burial and high water-table forces
- ◆ **Installation Flexibility** – multiple flats provide maximum area for locating pipe entries
- ◆ **Easy Field Height Adjustability** – the special ribbed height adjustment design makes adjustments to finished grade, if necessary, quick and easy

Replacement Parts and Accessories

Part #	Description
H13257M	Knob (each)
H13971	Knob Kit (6 Pack)
H13213M	Bracket
H13214M	Seal 33" (838 mm)
H13215M	Seal 39" (991 mm)
C04420M	Ring 33" (838 mm)
C04432M	Ring 39" (991 mm)
D02238	Cover
D02025M	Cover 33" (838 mm)
D02034M	Cover 39" (991 mm)
D02223	Sump Top Assembly for TSMDF-4536
CLC-33	Latched Fiberglass Tank Sump Lid

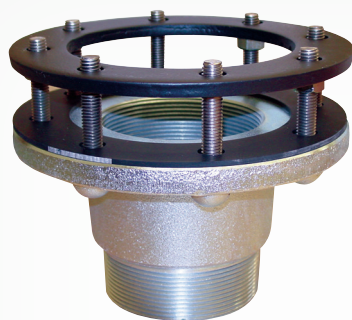


Ordering Specifications for New Latched Fiberglass Tank Sump Lids

Part #	Description
CLC-33	Latched Fiberglass Tank Sump Lid
LRK-CLC	Latch Replacement Kit for the CLC-33

Ordering Specifications - Polyethylene Tank Sumps (with Mechanically Fastened Covers)

Part #	Application	Dimensions											Weight	
		Manway Dia.		A Cover		B Height		C x D Panel		No. of Panels	E Base		lbs.	kg
		in.	mm	in.	mm	in.	mm	in.	mm		in.	mm		
TSS-4536	Tank Sump Shallow Bury, 36" x 45"	36	914	33	838	34	864	12 x 12	305 x 305	12	45	1,143	84	38
TSM-4536	Tank Sump Medium Bury, 36" x 45"	36	914	33	838	39	991	17 x 12	432 x 305	12	45	1,143	86	39
TSM-4842	Tank Sump Medium Bury, 42" x 48"	42	1,067	39	991	39	991	17 x 11	423 x 279	14	48	1,219	88	40
TSD-4536	Tank Sump Deep Bury, 36" x 45"	36	914	33	838	51	1,295	17 x 11	423 x 279	14	48	1,219	90	41
TSD-4842	Tank Sump Deep Bury, 42" x 48"	42	1,067	39	991	51	1,295	17 x 11	432 x 279	14	48	1,219	92	42



6" Tank Fitting Adaptor (SMF-6)
4" Tank Fitting Adaptor (SMF-4E)



4" Tank Fitting Adaptor –
No-Bolt Style (TFA-4090)



4" Sump Inspection Port
(SIP-4) Includes Urethane Sealant
(SL-1100)

Tank Sump-Mounting Flanges

FlexWorks tank sump-mounting flanges are used to mount FlexWorks tank sumps to 4" and 6" underground storage tank bung fittings. Flange top models (SMF-6) provide added flexibility in positioning of pump or extractor outlets. First, the riser or extractor is threaded into the top flange. The top flange is then oriented and bolted to the mounting flange.

Our no-bolt style mounting flange, model TFA-4090, is also used to mount FlexWorks tank sumps to 4" underground storage tank bung fittings and attaches to the bottom of the sump base to provide a secure and liquid-tight connection. This model has compression studs for added stability and fast and easy installation with a socket wrench.

Sump Inspection Ports

FlexWorks optional sight-glass kits include urethane sealant (SL-1100).

Ordering Specifications - Tank Fitting Adaptor

Part #	Application
TFA-4090	4" Tank Fitting Adaptor, No Bolt Style
SMF-4E	4" Tank Fitting Adaptor, Bolt Style
SMF-4EFT	4" Tank Fitting Adaptor, Bolt Style, Extended Flange
SMF-6	6" Tank Fitting Adaptor, Bolt Style

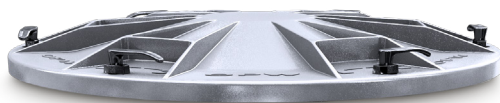
Ordering Specifications - Sump Inspection Port

Part #	Application
SIP-4	4" Sump Inspection Port
SIP-6	6" Sump Inspection Port

S Series, Fibrelite and FlexWorks Replacement Parts

Ordering Specifications - Sump Accessories and Lids

Part #	Application	Dia.	Weight (lbs)
WSP-WTS-OPC	6" Nitrile Observation Port Cap for WSP		
WS-RING-33	33" Stainless-steel Retaining Ring for Top-Hat		
WS-RING-37	37" Stainless-steel Retaining Ring for Top-Hat		
WTS-LHANDLE	L Style Replacement Sump Lid Handle		
WTS-THANDLE	T Style Replacement Sump Lid Handle		
WT-33	34.6" Dia. Watertight, Structural Spill Platform	34.6"	13
WT-37	38.4" Dia. Watertight, Structural Spill Platform	38.4"	17



THE LOOP SYSTEM™ ORDERING GUIDE

The Loop System contains
fewer parts to stock and install

Loop
SYSTEM

HiFlo Loop System

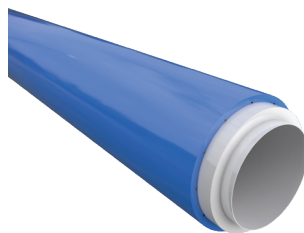
ABOVEGROUND MAINTENANCE, ABOVE & BEYOND PERFORMANCE



**ELECTROTITE
TANK SUMPS**



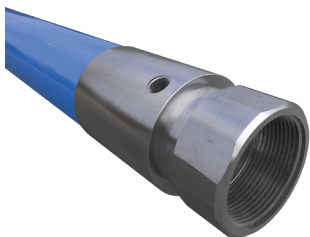
**DUAL-LAYER
ACCESS PIPES**



**UL971-LISTED
COAXIAL PIPES**



**DUAL-SIDED RIGID
ENTRY FITTINGS**



**DOUBLE-WALL PIPE
COUPLINGS (DPC)**



**10 PLUS
EMERGENCY
VALVES**



**PRE-FABRICATED
QUICK-COUPLE
DISPENSER SUMPS**



**HIFLO DISPENSER
SUMPS**

The Loop System™ Ordering Guide



Loop System Dispenser Sumps are shipped complete with factory-installed pipe entry fittings, OPW 10 Plus Shear Valves and Stabilizer Bars. Each Dispenser Sump has been assigned a custom Sump Configuration Number based on the number and position of pipe entries into the sump. Each Sump Product Number reflects this configuration number as well as materials used and for the application needed. The guide below explains the Product Number in detail.

Benefits

- 50% Faster Installation Times
- 100% Accessible No Breaking Concrete
- Double-Containment Protection
- Completely Testable
- End-to-End Monitoring
- Fewer Parts to Stock and Install



For high-flow applications, see HiFlo Ordering Guide on page 27.

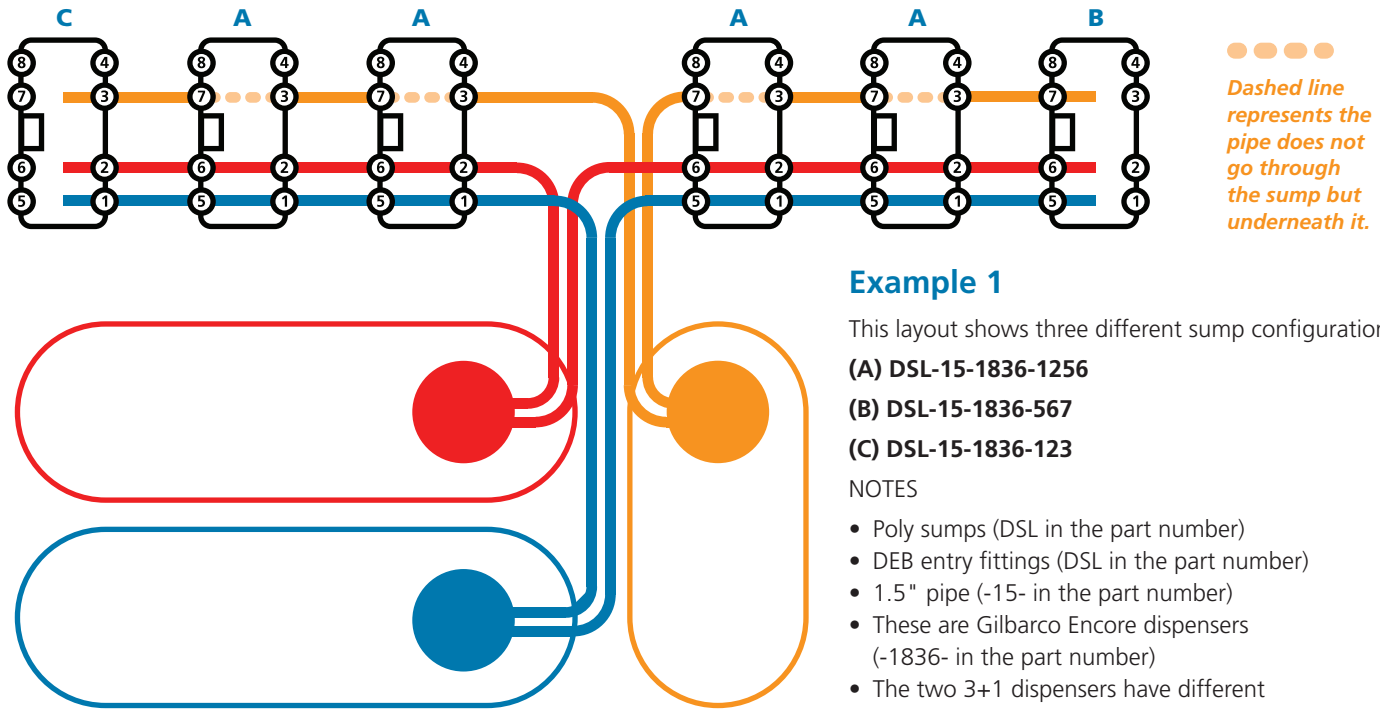
Ordering Guide

DSL(F)(NR)(-DW*)				
Dispenser Loop Sump	Dispenser Sump Loop	Pipe Size	Dispenser Styles	Piping Penetrations
<p>DSL = DPC Fittings, Poly Box</p> <p>DSL F = DPC Fittings, Fiberglass Box</p>	<p>N = SBC Fittings</p> <p>R = REF Fittings</p> <p>NR = SBC w/REF</p>	<p>15 = 1.5" piping</p> <p>20 = 2.0" piping</p>	<p>1543 = Wayne Ovation</p> <p>1543B = Bennet Pacific</p> <p>1836 = Gilbarco Encore</p> <p>1741 = Wayne Helix</p> <p>1741E85 = Wayne Helix E85</p>	<p>*See piping configuration guides following</p>

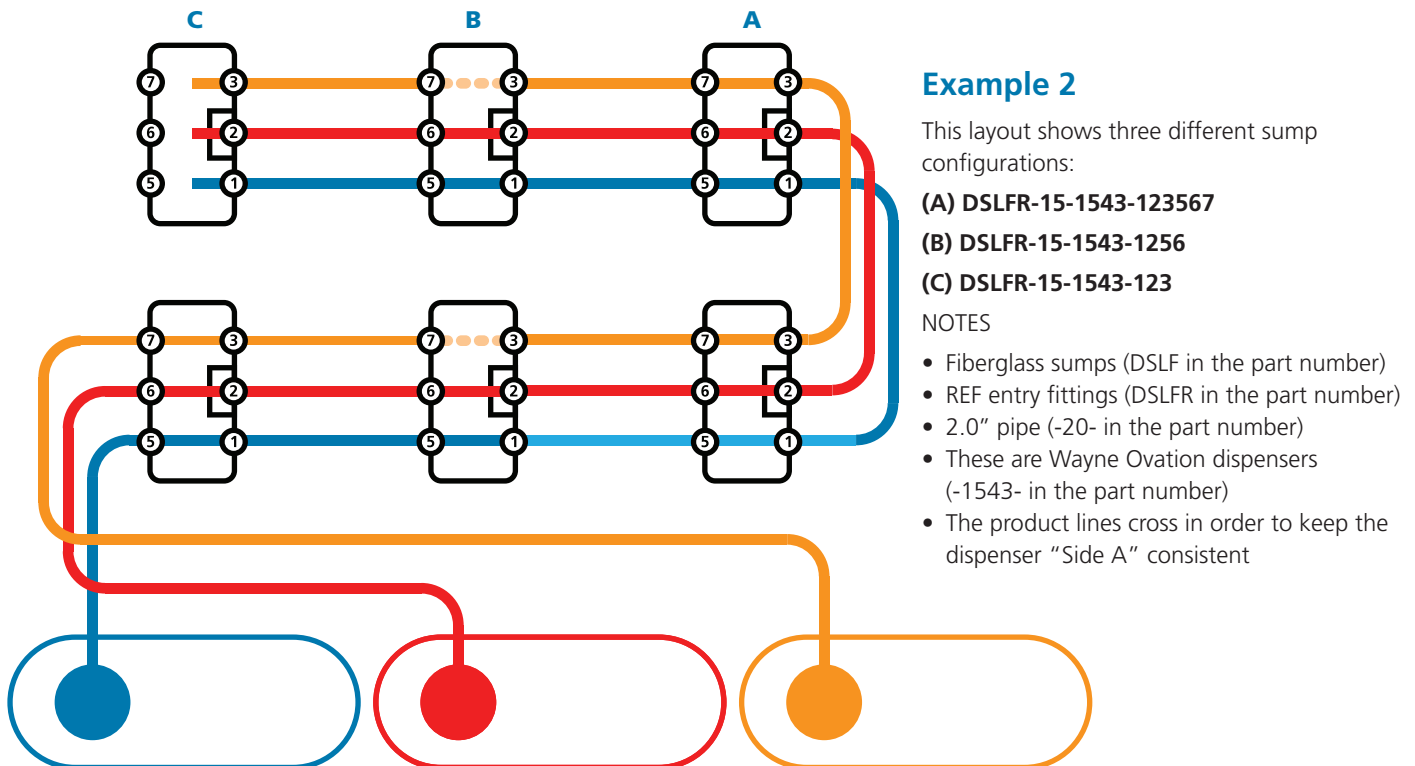
(-DW*) Double-wall loop offered on select models. Please contact customer service.

The Loop System™ Ordering Guide

Forecourt Examples



CONTACT CUSTOMER SERVICE FOR CUSTOM CONFIGURATIONS

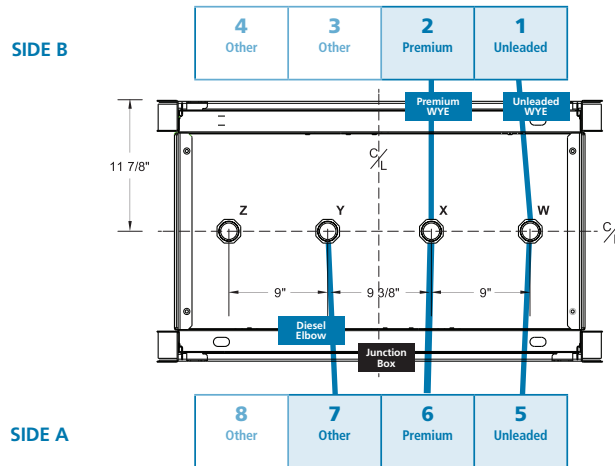


CONTACT CUSTOMER SERVICE FOR CUSTOM CONFIGURATIONS

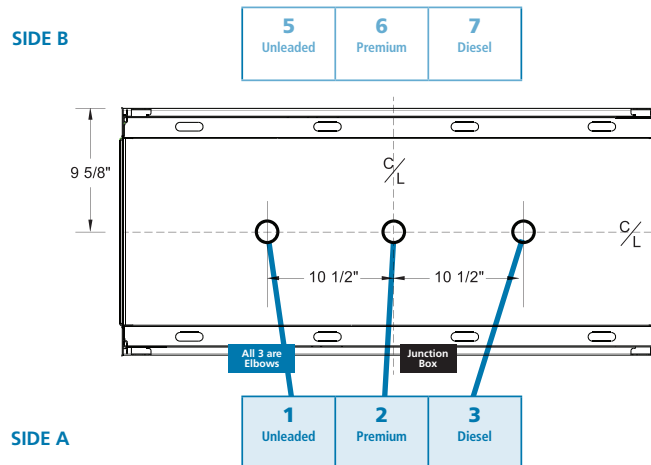
The Loop System™ Ordering Guide



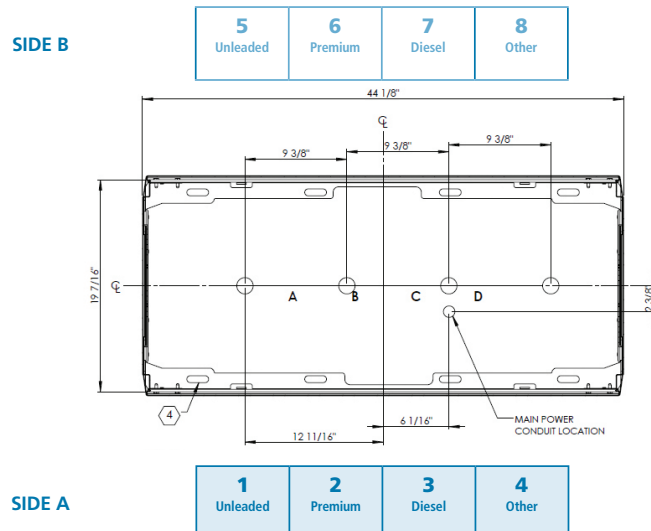
Gilbarco Encore



Wayne Ovation



Wayne Four Product



TOP VIEW OF BASES

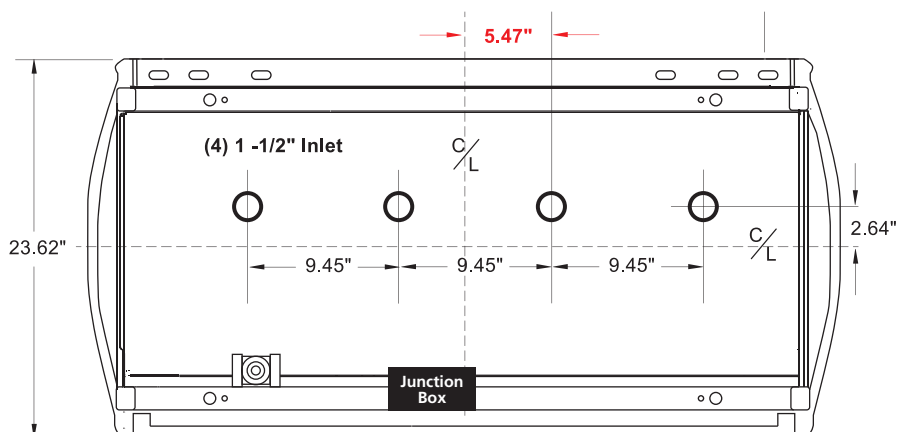
OPW-CATALOG-11/2023

The Loop System™ Ordering Guide

Wayne Helix

SIDE B

4 Other	3 Other	2 Premium	1 Unleaded
-------------------	-------------------	---------------------	----------------------



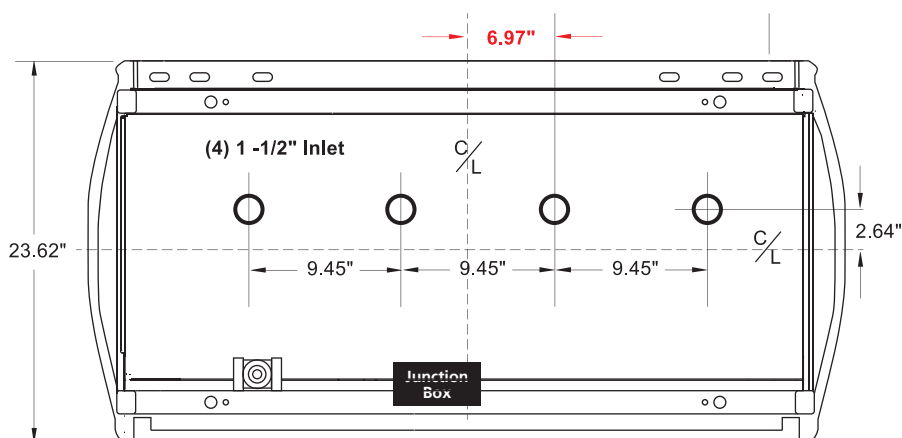
SIDE A

8 Other	7 Other	6 Premium	5 Unleaded
-------------------	-------------------	---------------------	----------------------

Wayne Helix E85

SIDE B

4 Other	3 Other	2 Premium	1 Unleaded
-------------------	-------------------	---------------------	----------------------



SIDE A

8 Other	7 Other	6 Premium	5 Unleaded
-------------------	-------------------	---------------------	----------------------

TOP VIEW OF BASES

The HiFlo Loop System™ Ordering Guide



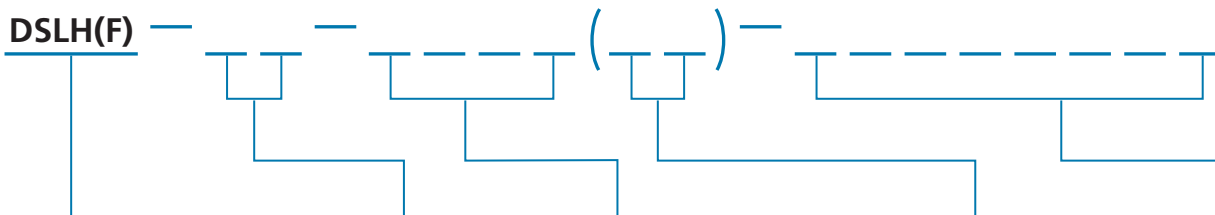
The patented OPW HiFlo Loop System™ represents the state of the art in retail-fueling containment technology offering a completely integrated, environmentally secure underground fuel-delivery system. By design, the system employs pre-fabricated and factory-assembled components resulting in dramatically less field labor, lower associated costs, and reduced potential for installation errors. The installed product preserves complete underground access to all piping connections, piping runs, and containment sumps. This unprecedented level of access allows for hassle-free inspections and maintenance without ever having to disrupt the business of the site with excavation. The HiFlo Loop System incorporates field-proven OPW technology to provide the same peace-of-mind that customers have come to expect from the traditional retail Loop System.

Benefits

- **Compatible with Ovation and Encore High-Speed Dispensers**
- **Configurable for any Master->Satellite setup**
- **New 2" 10 Plus provides best-in-class flow and protection**
- **New Hybrid Entry Fitting (HEF) combines the benefits of REF outside the sump with the flexibility of DEB on the inner sump**
- **The OPW HiFlo Loop System™** – Providing a radically new solution to minimize traditional fuel-delivery system problems.
- **The End Result** – An exponentially higher level of environmental protection and lower cost of fuel-delivery system ownership.



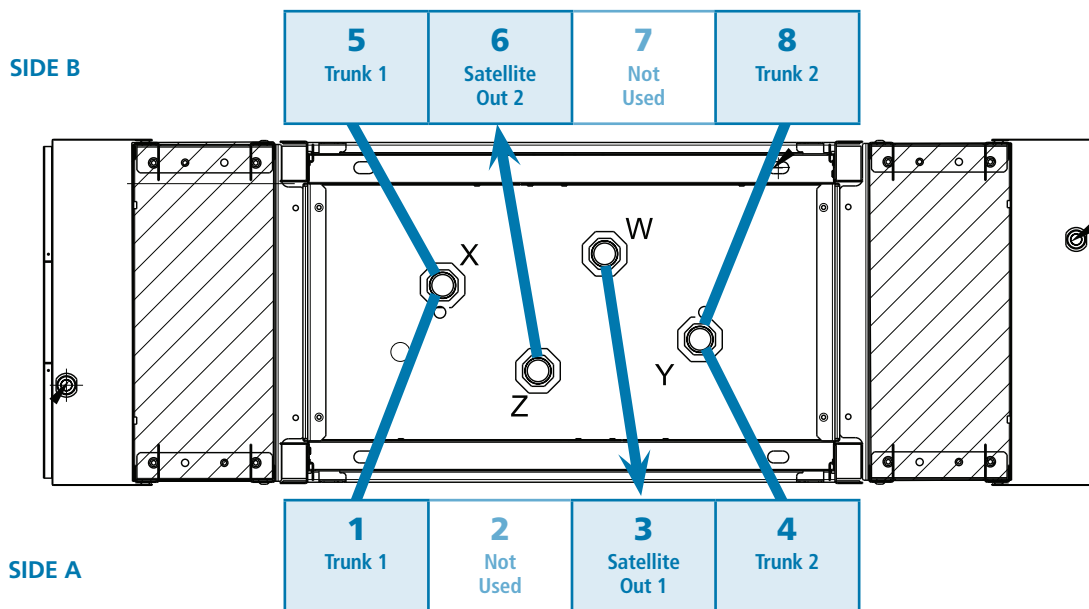
Ordering Guide



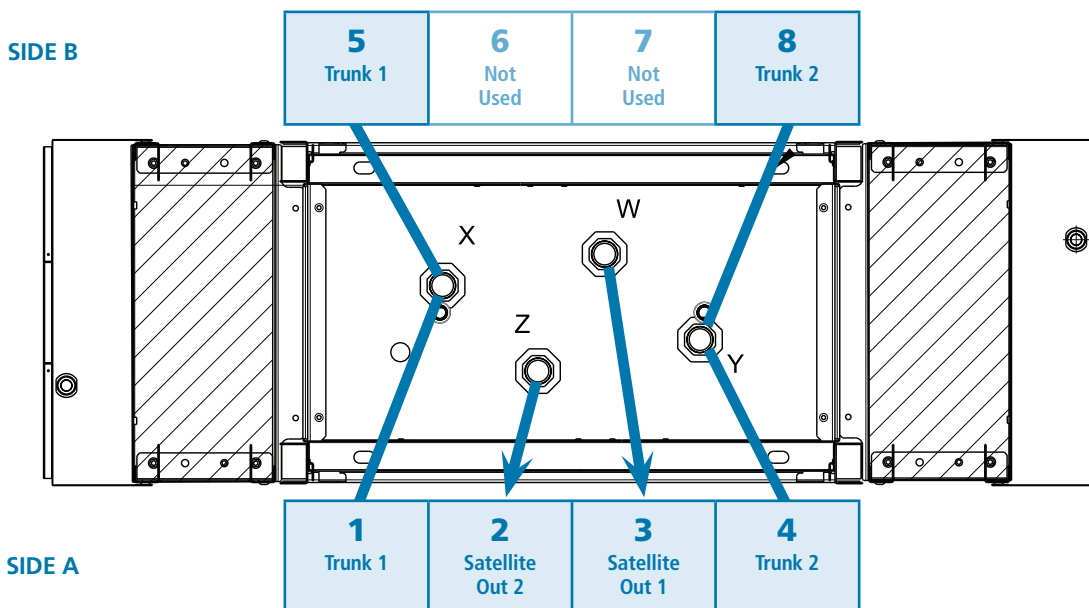
Dispenser Sump Loop, HiFlo	Trunk Line Size	Dispenser Style	Ovation Options (As Needed)	Configuration Layout
DSLH = Poly, DPC Fittings DSLHF = Fiberglass, DPC Fittings DSLHN* = Poly, SBC Fittings DSLHFN* = Fiberglass, SBC Fittings *Only available for 2" trunk lines	20 = Trunk 30 = Trunk 23 = 2" x 3" Trunk* 32 = 3" x 2" Trunk* XX = No Trunk, Satellite Dispenser *First number indicates Side A, Second number indicates Side B	1535L = Ovation HS, DEF Left 1535R = Ovation HS, DEF Right 1543 = Ovation HS 1836 = Gilbarco Encore 1836M = Gilbarco Encore Master	D = Dual Master T = With Strainer	See footprint charts

The HiFlo Loop System™ Ordering Guide

Encore Ultra-High Master (1836M)



Encore Ultra-High, Single-Sided Master (1836M)

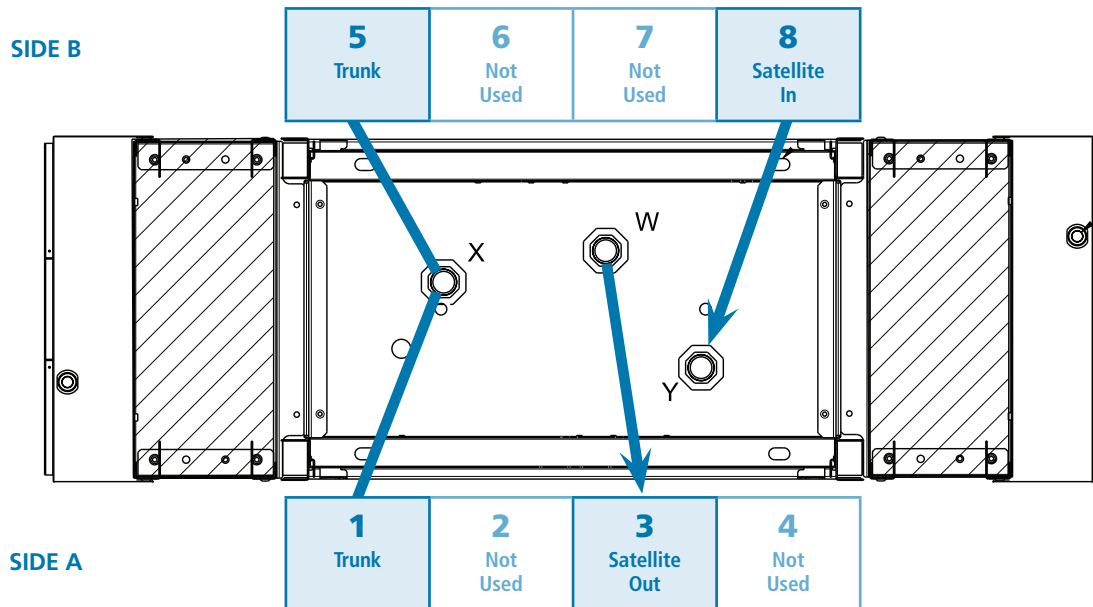


TOP VIEW OF BASES

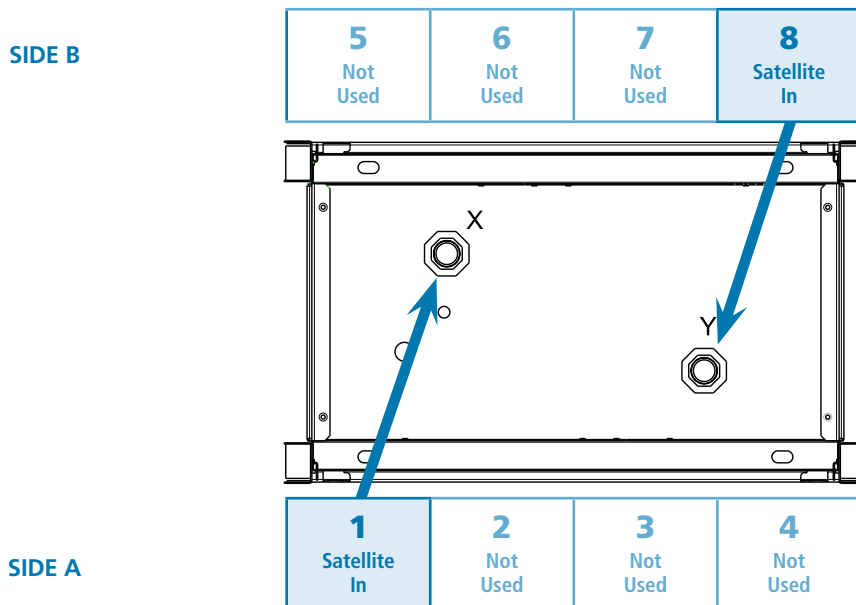
The HiFlo Loop System™ Ordering Guide

Loop
SYSTEM

Encore Ultra-High Master/Satellite



Encore Ultra-High Satellite

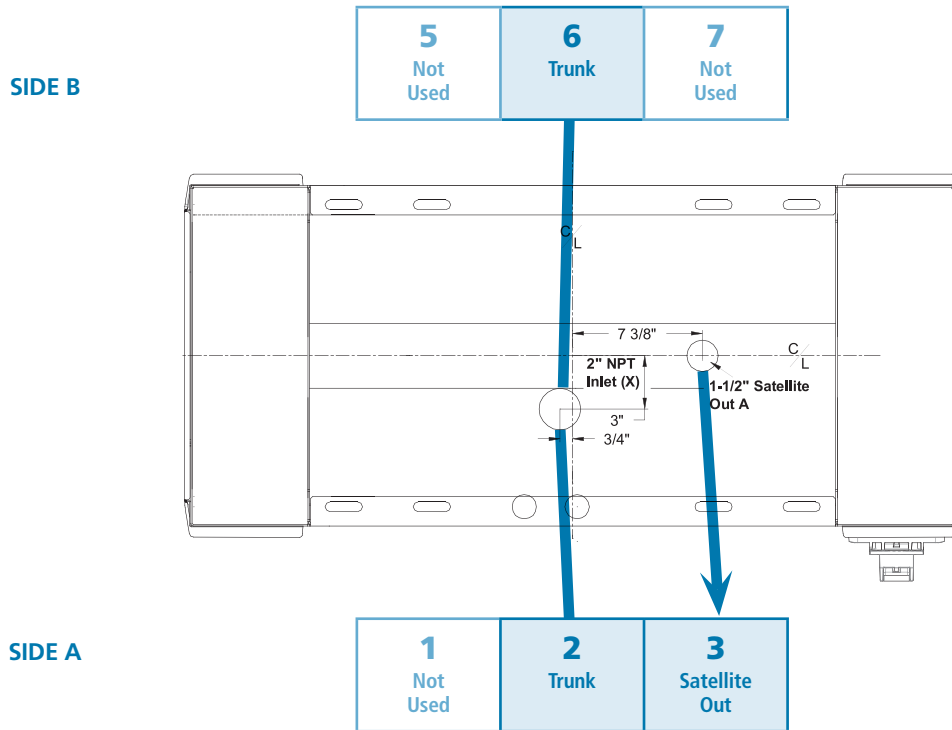


Note: For single-sided satellites, use position "1" on Side A.

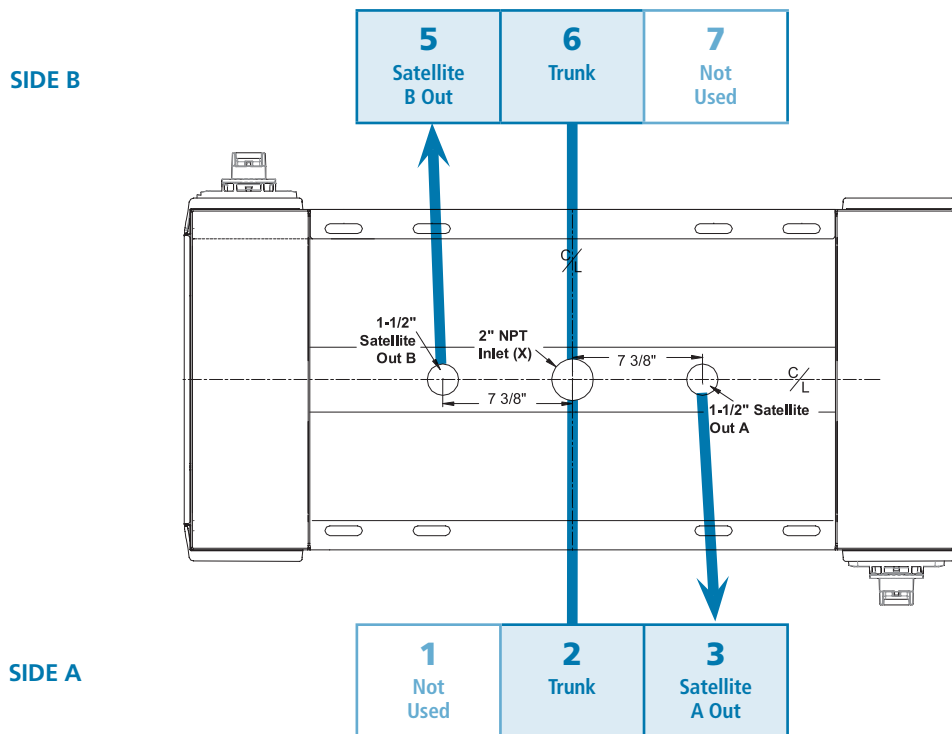
TOP VIEW OF BASES

The HiFlo Loop System™ Ordering Guide

Wayne Ovation HS, Single Master



Wayne Ovation HS, Dual-Sided, Master

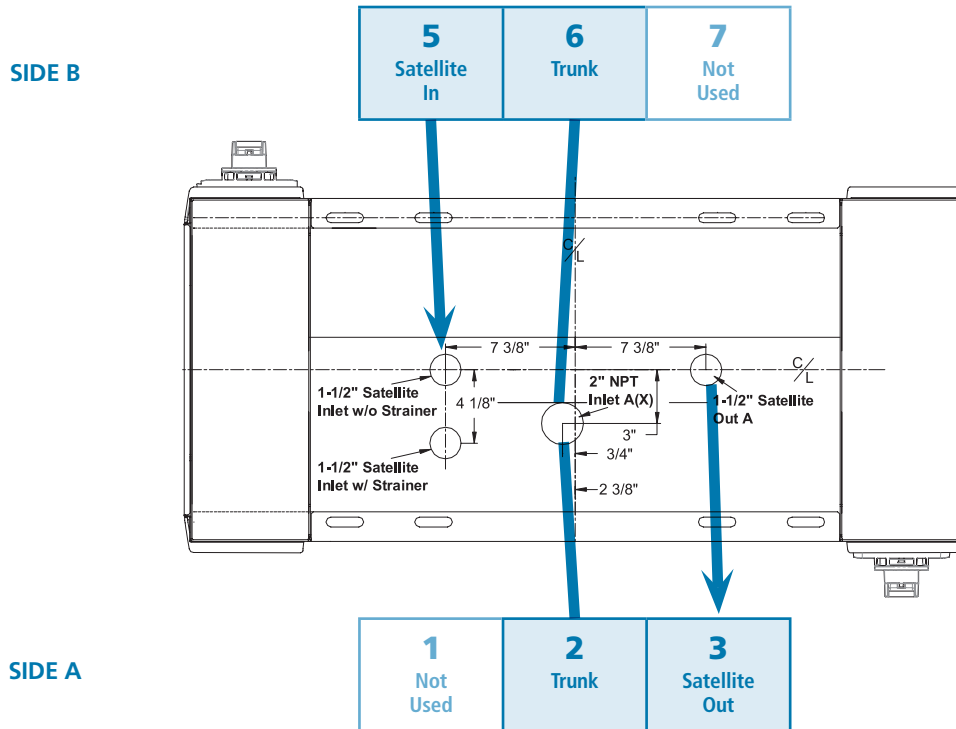


TOP VIEW OF BASES

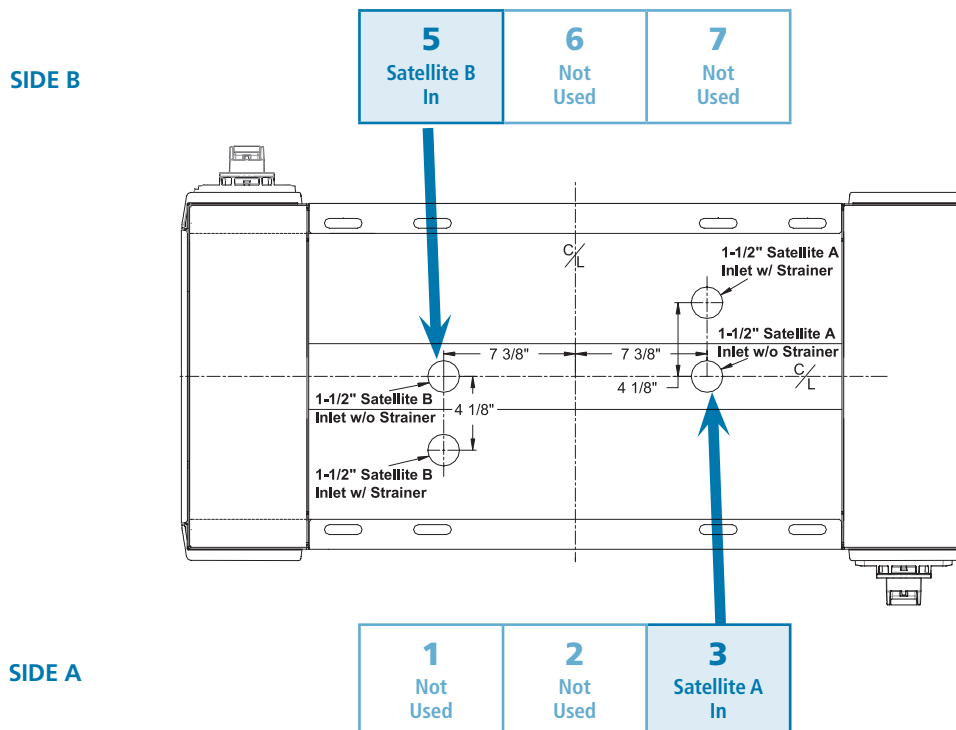
The HiFlo Loop System™ Ordering Guide

Loop
SYSTEM

Wayne Ovation HS, Master/Satellite



Wayne Ovation HS, Satellite



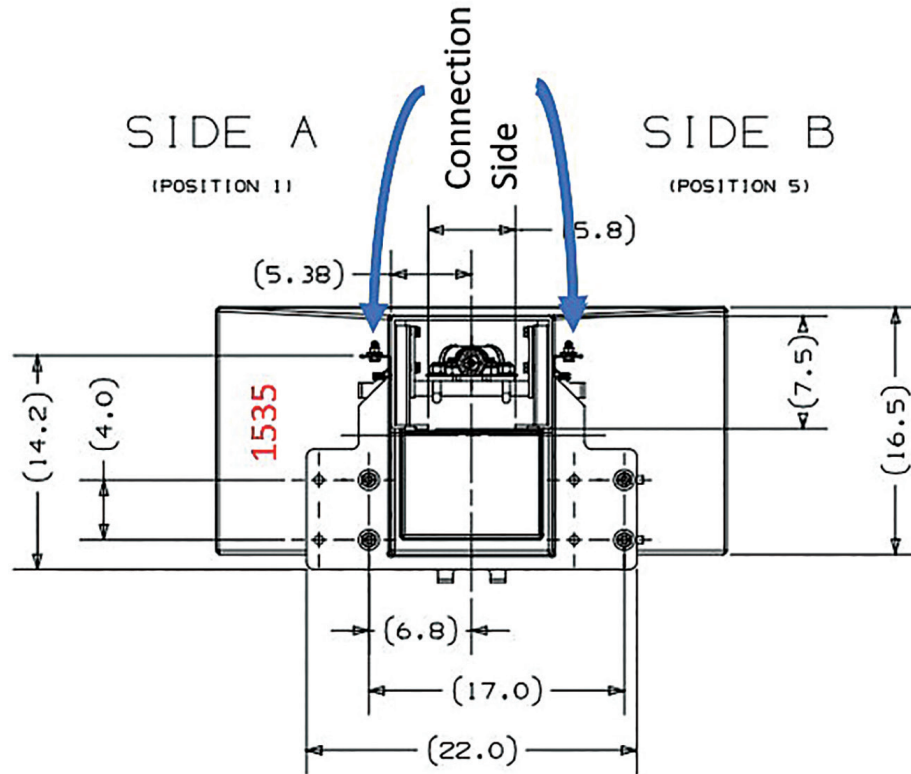
Note: For single-sided satellites, use position "3" on Side A.

TOP VIEW OF BASES

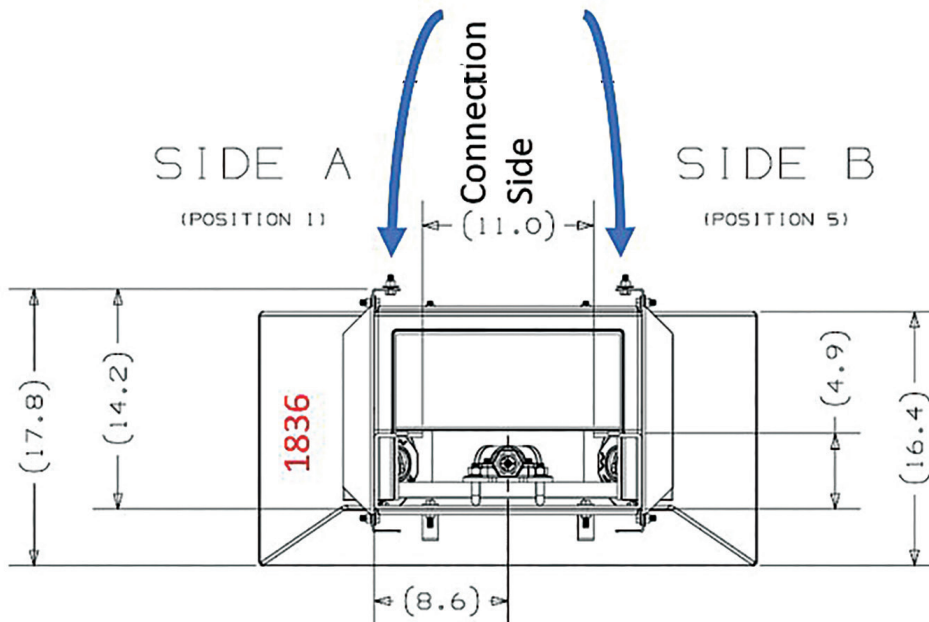
DEF Loop Configuration Ordering Guide



DEF for Ovation w/Loop



DEF for Encore w/Loop



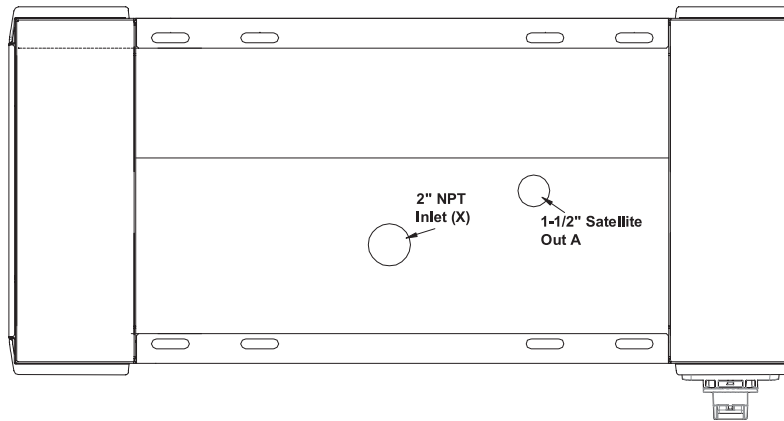
TOP VIEW OF BASES

DEF Loop Configuration Ordering Guide*

Ovation HS Master Options

DSLH-30-1543-26

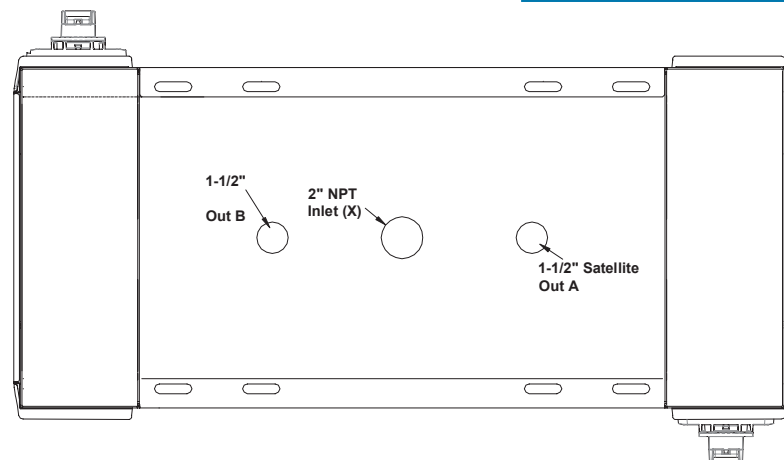
SIDE B



SIDE A

DSLH-30-1543D-26

SIDE B



SIDE A

Double-Sided
Master
adds "D" for
"DUAL"

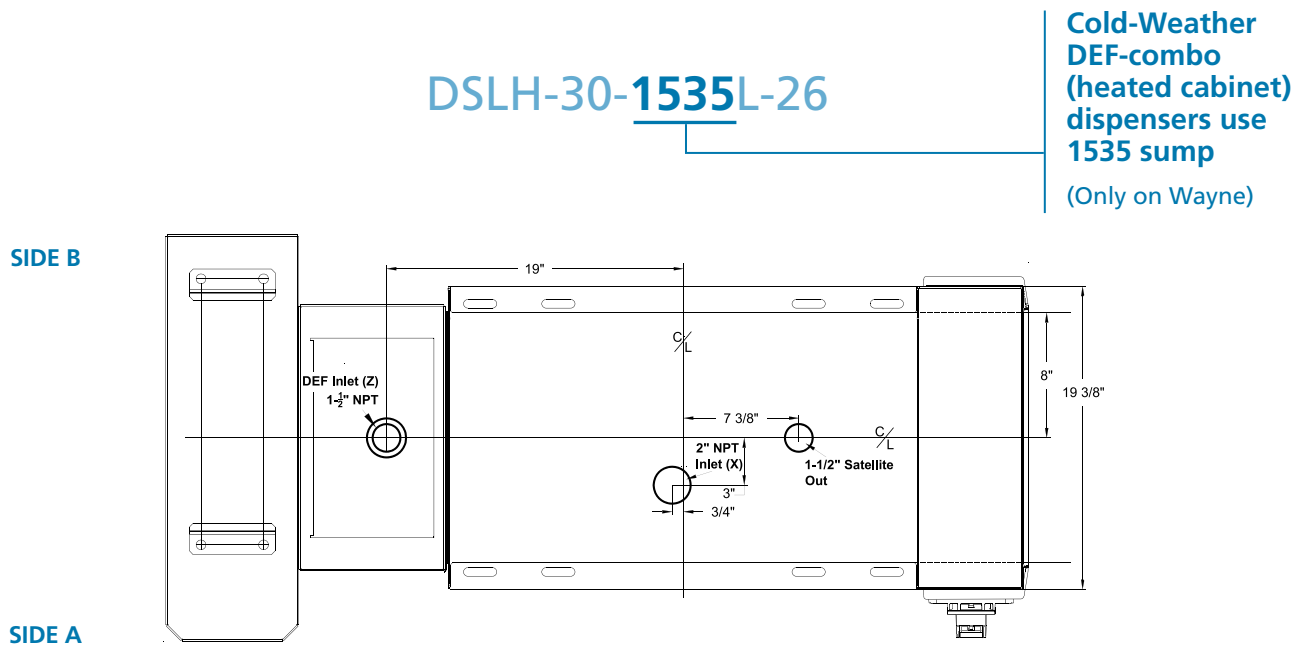
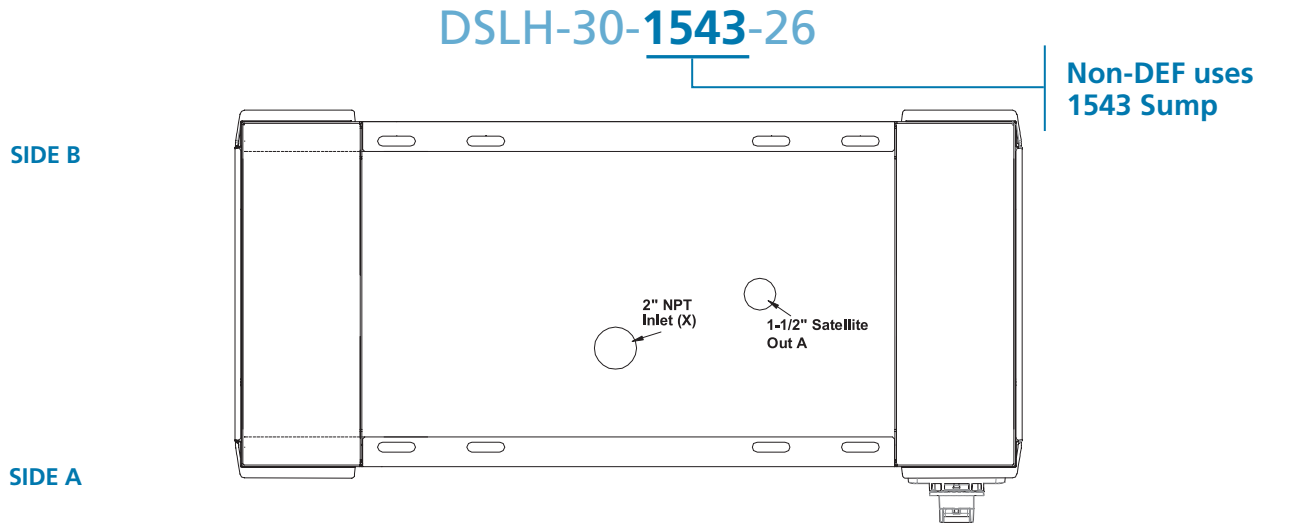
(Only on Wayne)

TOP VIEW OF BASES

DEF Loop Configuration Ordering Guide



Ovation HS DEF Options



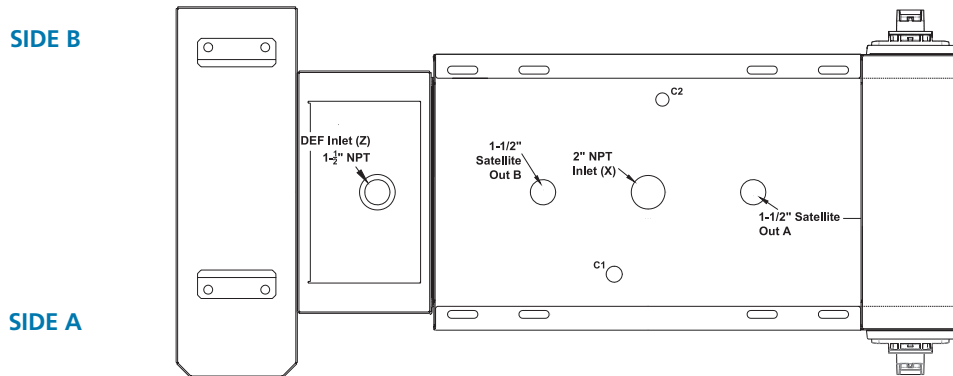
TOP VIEW OF BASES

DEF Loop Configuration Ordering Guide*

Ovation DEF Cabinet Options

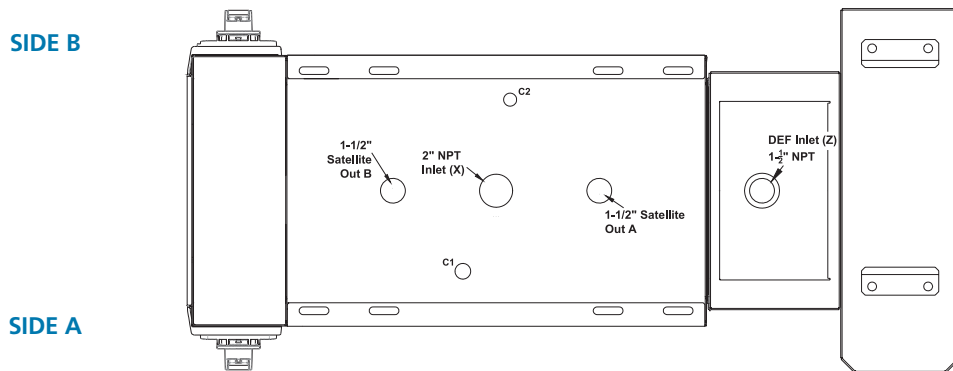
DSLH-30-1535**L**D-26

DEF side specified
with "L" for "Left"
(Only on Wayne)



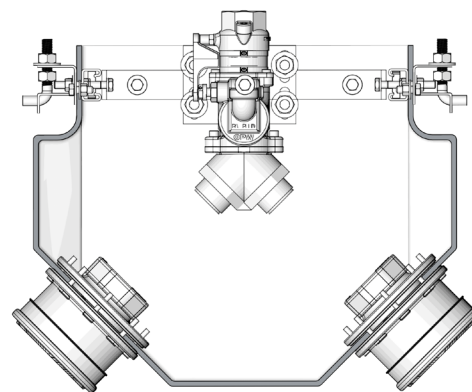
DSLH-30-1535**R**D-26

DEF side specified
with "R" for "Right"
(Only on Wayne)



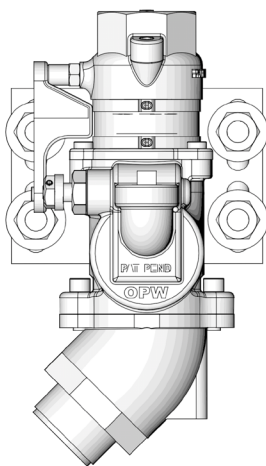
TOP VIEW OF BASES

The Loop System™ Ordering Guide

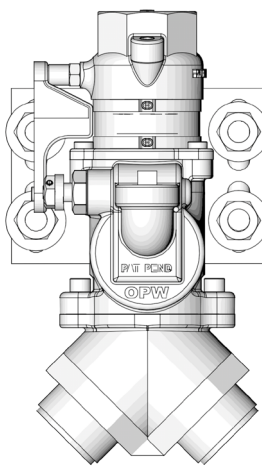
Loop
SYSTEM


Loop Replacement Parts

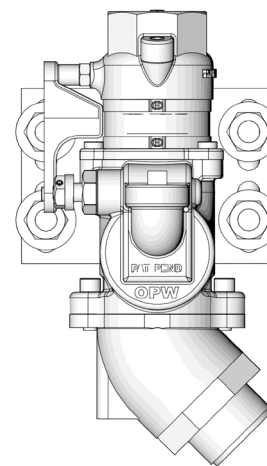
Part #	Threads	Thread Size	Description
SVD-1522	NPSH	1.5"	Double poppet shear valve, Junction fitting and Mounting Plate
SVD-1522E85	NPSH	1.5"	E-85 Double poppet shear valve, Junction fitting and Mounting Plate
SVD-1522N	NPT	1.5"	Double poppet shear valve, Junction fitting and Mounting Plate
SVD-2022	NPSH	2.0"	Double poppet shear valve, Junction fitting and Mounting Plate
SVD-2022E85	NPSH	2.0"	Double poppet shear valve, Junction fitting and Mounting Plate
SVD-2022E85	NPSH	2.0"	Double poppet shear valve, Junction fitting and Mounting Plate
SVD-2022N	NPT	2.0"	Double poppet shear valve, Junction fitting and Mounting Plate
SVD-2522	NPSH	1.5" x 2"	Double poppet shear valve, Junction fitting and Mounting Plate
SVD-1524L	NPSH	1.5"	Double poppet shear valve, Elbow and Mounting Plate
SVD-1524E85L	NPSH	1.5"	E-85 Double poppet shear valve, Elbow and Mounting Plate
SVD-1524NL	NPT	1.5"	Double poppet shear valve, Elbow and Mounting Plate
SVD-2024L	NPSH	2.0"	Double poppet shear valve, Elbow and Mounting Plate
SVD-2024E85L	NPSH	2.0"	E-85 Double poppet shear valve, Elbow and Mounting Plate
SVD-2024NL	NPT	2.0"	Double poppet shear valve, Elbow and Mounting Plate
SVD-1524R	NPSH	1.5"	Double poppet shear valve, Elbow and Mounting Plate
SVD-1524E85R	NPT	1.5"	Double poppet shear valve, Elbow and Mounting Plate
SVD-1524NR	NPT	1.5"	Double poppet shear valve, Elbow and Mounting Plate
SVD-2024E85R	NPSH	2.0"	Double poppet shear valve, Elbow and Mounting Plate
SVD-2024NR	NPT	2.0"	E-85 Double poppet shear valve, Elbow and Mounting Plate
SVD-2024R	NPSH	2.0"	Double poppet shear valve, Elbow and Mounting Plate
10RPLUS-0152			1.5" 10 PLUS Replacement top, Double Poppet
10RPLUS-0202			2" 10 PLUS Replacement top, Double Poppet



SVD - XX24L



SVD - XX22



SVD - XX24R

Ordering Specifications - FlexWorks Dispenser Sump Selection Chart

Dispenser Manufacturer & Model		Dispenser Footprint Dimensions		FlexWorks One-Piece Polyethylene Sump	FlexWorks Wide-Access Polyethylene Sump	FlexWorks One-Piece Polyethylene Pan	FlexWorks One-Piece Fiberglass Sump	FlexWorks Wide- Access Fiberglass Sump	DSE Fiberglass Sump	Stabilizer Bar Kit
		in.	cm							
GILBARCO										
Commercial 625, 650, 684 Series (21" / 53" cm Frame)		15 ¹¹ / ₁₆ " x 21"	40 x 53	DS-1117F	---	DP-1117F	---	---	----	SBK-1100J
Salesmaker-2 Series (21" / 53 cm Frame)		15 ¹¹ / ₁₆ " x 21"	40 x 53	DS-1117F	---	DP-1117F	---	---	----	SBK-1100J
Highline 11B Series (21" Frame / 53 mm)		15 ¹¹ / ₁₆ " x 21"	40 x 53	DS-1117F	---		---	---	----	SBK-1100J
Highline 111B Series (27" / 69 cm Frame)		15 ¹¹ / ₁₆ " x 27"	40 x 69	DS-1123F	DSW-1123F	DP-1123F	---	---	----	SBK-1100J
Trimline 251, 252, 261, 262 (27" / 69 cm Frame)		15 ¹¹ / ₁₆ " x 27"	40 x 69	DS-1123F	DSW-1123F	DP-1123F	---	DSF-1123F	----	SBK-1100J
Trimline 154, 164, 251, 262 (27" / 69 cm Frame)		15 ¹¹ / ₁₆ " x 21"	40 x 53	DS-1117F	---	---	---	---	----	SBK-1100J
Commercial 650 Series (27" / 69 cm Frame)		15 ¹¹ / ₁₆ " x 27"	40 x 69	DS-1123F	DSW-1123F	DP-1123F	---	DSF-1123F	----	SBK-1100J
Highline Salesmaker Series		15 ¹¹ / ₁₆ " x 21"	40 x 53	DS-1117F	---	DP-1117F	---	---	----	SBK-1100J
Highline Salesmaker Series (27" / 69 cm Frame)		15 ¹¹ / ₁₆ " x 27"	40 x 69	DS-1123F	DSW-1123F	DP-1123F	---	DSF-1123F	----	SBK-1100J
Salesmaker-4 Series (27" / 69 cm Frame)		15 ¹¹ / ₁₆ " x 27"	40 x 69	DS-1123F	DSW-1123F	DP-1123F	---	DSF-1123F	----	SBK-1100J
Legacy Series		15 ¹¹ / ₁₆ " x 27"	40 x 69	DS-1123F	DSW-1123F	DP-1123F	---	DSF-1123F	----	SBK-1100J
Encore Series	LOOP SYSTEM- READY	23 ¹ / ₂ " x 40 ⁹ / ₁₆ "	60 x 103	DS-1836		DP-1836	FDS-4021	DSF-1836 DSF-1836C	DSE-1836	SBK-1800*
Advantage (36" / 91 cm Frame Models)		21 ¹ / ₂ " x 36"	55 x 91	DS-1630	DSW-1630	DP-1630	---	DSF-1630	----	SBK-1600
Advantage (48" / 122 cm Frame Models)		21 ¹ / ₂ " x 48"	55 x 122	DS-1642	---	---	---	---	----	SBK-1600*
MPD-1, MPD-2, MPD-3		16" x 48"	41 x 122	DS-1036	---	---	---	---	----	SBK-1000J
MPD Fixed Blender		16" x 48"	41 x 122	DS-1036	---	---	---	---	----	SBK-1000J
BENNETT										
Bennett Pacific	LOOP SYSTEM- READY	19 ¹ / ₂ " x 43 ¹ / ₂ "	49 x 110	DS-1543A	---	---	---	---	----	SBK-1500
Bennett 3000 Series		20" x 30"	51 x 76	DS-1123B	---	---	---	---	----	SBK-1100J
PD MCLAREN										
RDR HSx (Single Product, Single Hose)		21" x 17.75"	53 x 45	---	DSW-1922	---	---	---	----	SBK-1900
RDR HSx-D1 (Single Product, Dual Hose)		21" x 17.75"	53 x 45	---	DSW-1922	---	---	---	----	SBK-1900
RDR HSx-D2 (Dual Product, Dual Hose)		21" x 17.75"	53 x 45	---	DSW-1922	---	---	---	----	SBK-1900
RDR HSx-SAT (Master Unit and Satellites)		21" x 17.75"	53 x 45	---	DSW-1922	---	---	---	----	SBK-1900
RDR HSx-X2 (Single Product, Dual Hose, One at a Time)		21" x 17.75"	53 x 45	---	DSW-1922	---	---	---	----	SBK-1900

* For FDS-4021 Models, use Stabilizer Bar SBK-1800.

Ordering Specifications - FlexWorks Dispenser Sump Selection Chart

Dispenser Manufacturer & Model	Dispenser Footprint Dimensions		FlexWorks One-Piece Polyethylene Sump	FlexWorks Wide-Access Polyethylene Sump	FlexWorks One-Piece Polyethylene Pan	FlexWorks One-Piece Fiberglass Sump	FlexWorks Wide- Access Fiberglass Sump	DSE Fiberglass Sump	Stabilizer Bar Kit
	in.	cm							
GASBOY									
0215A, 216A (19 ⁷ / ₈ " Frame / 50.5 mm)	17 ¹ / ₄ " x 19 ⁷ / ₈ "	44 x 50.5	DS-1117F	---	DP-1117F	----	---	----	SBK-1100J
52 and 53 Series	17" x 19 ⁷ / ₈ "	43 x 50.5	DS-1117F	---	DP-1117F	----	---	----	SBK-1100J
8700, 8800, 9100, 9800 Series	17 ¹ / ₄ " x 25"	43 x 63.5	DS-1120	----	----	----	----	----	SBK-1100J
8700, 8800, 9100, 9800 Series (28 ¹ / ₄ " Frame / 72 mm)	17 ¹ / ₄ " x 28"	44 x 71	DS-1123	DSW-1123	DP-1123	----	DSF-1123F	----	SBK-1100J
9850A	15 ¹¹ / ₁₆ " x 21"	40 x 53	DS-1120	DSW-1120	----	----	DSF-1120	----	SBK-1100J
* Stabilizer bar is installed widthwise in dispenser sump									
DRESSER / WAYNE									
350, 357, 358, 360, 370 Series	15" x 25 ⁷ / ₈ "	38 x 66	DS-1123F	DSW-1123F	DP-1123F	----	DSF-1123F	----	SBK-1100J
Vista 380 Series (387, 389)	20" x 35"	51 x 89	DS-1229	---	----	----	---	----	SBK-1200J
Vista 590 Series (590, 595)	20" x 48"	51 x 122	DS-1242	---	----	----	---	----	SBK-1200J
Vista 390 Series (395, 399)	20" x 48"	51 x 122	DS-1242	---	----	----	---	----	SBK-1200J
Vista 490 Series	20" x 48"	51 x 122	DS-1242	---	----	----	---	----	SBK-1200J
DL390, 395, 399 Series	20" x 48"	51 x 122	DS-1242	---	----	----	---	----	SBK-1200J
HS1 Satellite / 287 Series	20" x 35"	51 x 89	DS-1229	---	----	----	---	----	SBK-1200J
Ovation ₂	<div>LOOP SYSTEM- READY</div> 19 ¹ / ₂ " x 43 ¹ / ₂ "	50 x 110	DS-1543A	----	DP-1543	FDS-4319*	DSE-1543	DSE-1543	SBK-1500
Select	19 ³ / ₈ " x 32 ⁵ / ₁₆ "	49 x 82	DS-1928	----	----	----	DSF-1630	----	SBK-1500
Global Century	19 ³ / ₈ " x 32 ⁵ / ₁₆ "	49 x 82	DS-1928	----	----	----	DSF-1630	----	SBK-1500
Reliance	19 ³ / ₈ " x 32 ⁵ / ₁₆ "	49 x 82	DS-1928	----	----	----	DSF-1630	----	SBK-1500
HS4 / HS3 / Vista	19 ³ / ₈ " x 32 ⁵ / ₁₆ "	49 x 82	DS-1630	DSW-1630	DP-1630	----	DSF-1630	----	SBK-1600
Narrow Frame Helix (2000, 4000)	20" x 33"	51 x 84	DS-1630	----	----	----	----	DSE-1741	SBK-1600
Wide Frame Helix (5000)	<div>LOOP SYSTEM- READY</div> 26" x 44"	66 x 112	DS-1741	----	----	----	----	DSE-1741	SBK-1700
TOKHEIM									
1200, 1248, 1250 Series	17 ¹ / ₄ " x 25"	44 x 64	DS-1120	DSW-1120	----	----	DSF-1120	----	SBK-1100J
330B, 333B Series	17 ¹ / ₄ " x 44"	44 x 112	DS-1642	---	----	----	---	----	SBK-1600

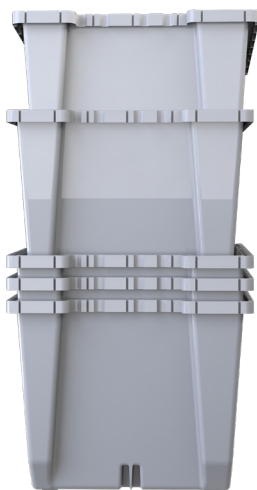
* For FDS-4319 Model use Stabilizer Bar SBO-0250

DSE Dispensing Sump

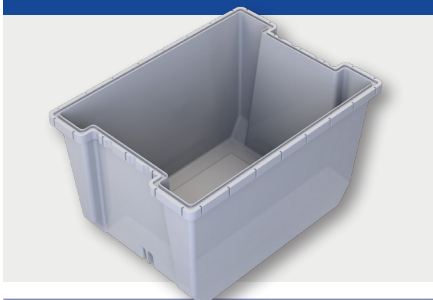
OPW brings you a new dispenser sump that delivers cost-effective peace of mind for retail-fueling operators. The innovative DSE combines superior design, premium materials and world-class manufacturing expertise without breaking the bank, and its fast, reliable construction means it's ready to slot into your station right away.

Stacked with Features

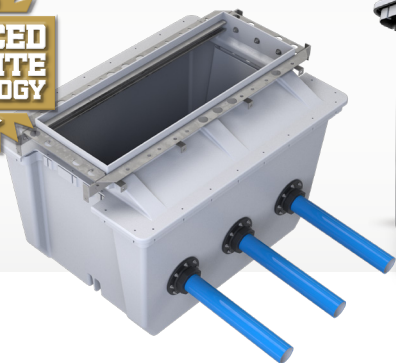
DSE Dispenser Sumps fit into your existing dispensing network with ease. The sump base is designed to create strong bonds with fiberglass and flexible pipe and fittings. The DSE's universal base is sized to nest perfectly inside itself, while the feet and specialized grooves help it to unstack with ease.



ONE BASE



Sump: Fiberglass



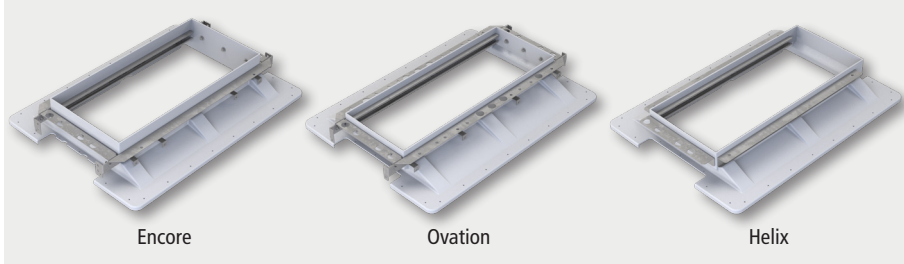
Ordering Specifications - DSE Dispenser Sumps

Sump Model Number	Dimensions							
	A		B		C		D	
	in.	cm	in.	cm	in.	cm	in.	cm
DSE-1836	20.22	51.36	17.20	43.69	44.11	112.04	35.90	91.19
DSE-1543	17.18	43.64	14.60	37.08	45.90	116.59	38.90	98.81
DSE-1741	18.50	46.99	16.70	42.42	44.20	112.27	38.10	96.77

Separate Component Part Numbers

Part Number	Description
DSE-BASE	Description: DSE Universal Base. Combines with any DSE top
DSE-TOP-1836	Gilbarco Encore Top. Combine with DSE-BASE to make DSE-1836
DSE-TOP-1543	Wayne Ovation Top. Combine with DSE-BASE to make DSE-1543
DSE-TOP-1741	Wayne Helix Top. Combine with DSE-BASE to make DSE-1741

THREE DIFFERENT TOPS



Encore

Ovation

Helix

FEATURE	COMPETITOR	OPW	VALUE
Advanced Composite Manufacturing Technology			Provides dependable quality each and every time with consistent wall thickness, material blend, sump shape and detail
Quick and Efficient Manufacturing Time per Unit			Shortest lead time of any fiberglass sump in the industry; best value for the price on the market
Designed for Easy Nesting, Stacking and Unstacking			Maximizes distributor warehouse, construction trailer and jobsite space; lowers shipping costs
Smooth Surface on Both Sides of the Sump Wall			Enhanced leak-resistant sealing surface for all types of entry fittings
One Base for All Dispenser Models			Reduces distributor inventory and improves ease of ordering; all sump models are conduitless with wide access
Closed-Molded Manufacturing Process			Eliminates worker and environmental exposure to resin vapors or glass fibers
Backed by OPW			Legendary OPW quality, service, support and value

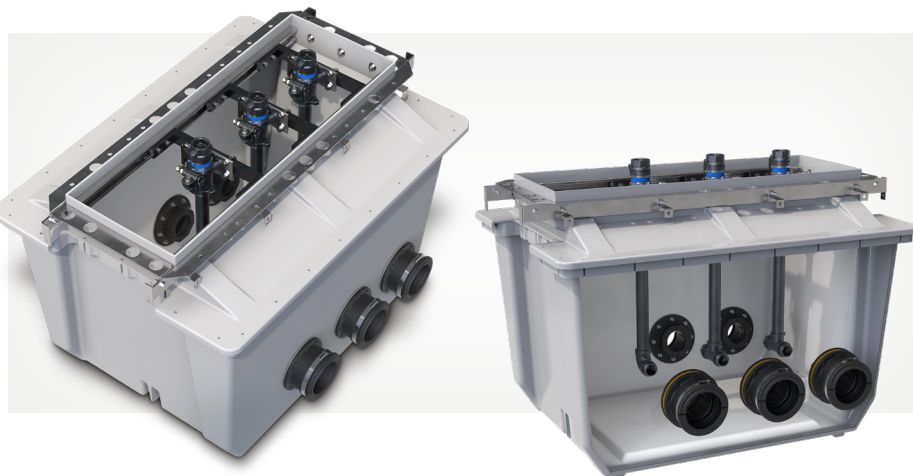
Pre-Plumbed DSE Dispenser Sump

Utilizing the quality and value of the DSE Dispenser Sump, OPW now offers a Pre-Plumbed DSE for customers who wish to save time and costs of installation.

Complete with factory-assembled and tested components, the Pre-Plumbed DSE continues the OPW E-Series tradition of superior design, materials, and affordability. The OPW Loop System® without the "loop".

The Pre-Plumbed DSE ships installed with the following items:

- ◆ Tops (Wayne Ovation or Gilbarco Encore)
- ◆ Pipe Entry Fittings
- ◆ Stabilizer Bars
- ◆ OPW 10Plus Double-Poppet Emergency Shear Valves
- ◆ Flex Connectors or Rigid Risers (NPT Pipe Nipples)
- ◆ Elbows/Tees



Features & Benefits:

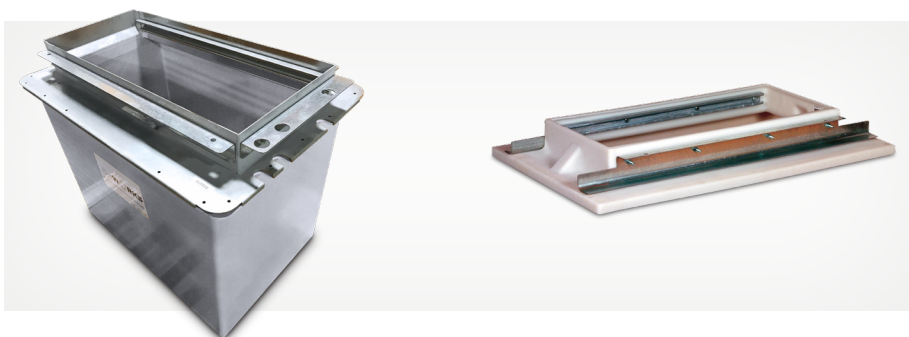
- ◆ **Quality Components Factory-Installed** – pre-plumbed dispenser sump provides convenience and installation cost/time savings
- ◆ **Piece-of-Mind Installation** – components are factory installed and tested in a controlled environment eliminating potential costly installation errors in the field
- ◆ **Advanced Composite Technology** – premium construction of a robust fiberglass product with smooth surfaces on both sides of the sump walls and consistent thickness, blend and shape for strong bonds with entry fittings
- ◆ **Customizable** – select your configurations with desired Hybrid Entry Fittings (HEF) or Rigid Entry Fittings (REF), Flex Connectors or Rigid NPT Pipe Nipples, and Encore or Ovation Tops complete with stabilizer bars
- ◆ **Efficient Manufacturing and Fast Lead Times** – provides best-in-class quality and value shipped quickly
- ◆ **Loop System Advantages** – all the features and benefits of the legendary OPW Loop System for jurisdictions that still require piping slope back to the tank

Components

Part Configurations

Base	DSE-BASE			
Tops	DSE-1836	Gilbarco Encore	DSE-1543	Wayne Ovation
Stabilizer Bars	SBK-1800	Gilbarco Encore	SBK-1500	Wayne Ovation
Pipe Entry Fittings	REF-4015	1.5" Rigid Entry Fittings	HEF-4015	1.5" Hybrid Entry Fittings
	REF-4020	2.0" Rigid Entry Fittings	HEF-4020	2.0" Hybrid Entry Fittings
Emergency Shear Valves	10P-0152	10 Plus 1.5" Double Poppet		
Flex Connectors or Rigid Risers (1.5" x 18")	217817	1.5" NPT Pipe Nipple, 18" length (Rigid Riser)	FC15-SWM18	1.5" Flex Connector Male Swivel x Male, 18" length
Tees or Elbows (1.5" or 2" NPSH x NPT)	STF-1515	1.5" Tees	SEF-1515	1.5" Elbows
	STF-2215	2.0" Tees	SRE-2015	2.0" Elbows

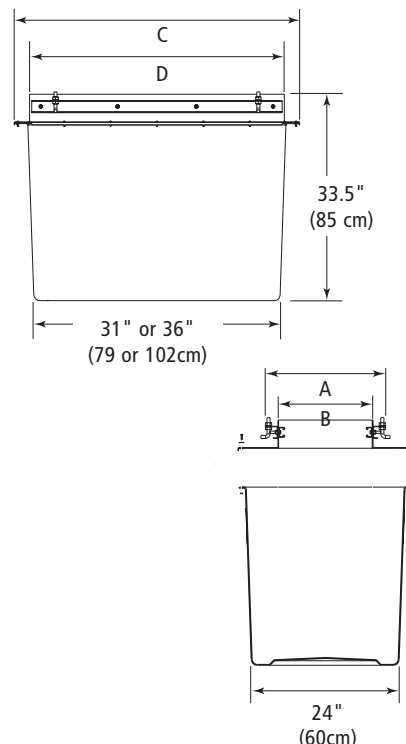
For Ordering Guide, see Pre-Plumbed DSE Brochure or visit: opwglobal.com/dse



Features & Benefits:

- ◆ **Conduitless Design** – the fiberglass base and metal cap and frame are designed to directly conduit into the dispenser along the side of the sump to avoid requiring additional entry boot penetrations
- ◆ **Multi-Product Flexible** – the wide sump surface area is designed to accommodate up to 4 product lines into the sump
- ◆ **Structural Integrity** – engineered with thick side walls to withstand backfill and high water table forces. Precise glass and resin metering throughout the molding process ensures material consistency and maximizes the strength-to-weight ratio
- ◆ **Full-Perimeter Liquid Collection Channel** – facilitates quick leak detection and allows flexibility in locating leak sensors
- ◆ **Smooth Sealing Surfaces For Leak-Tight Sump Entry Fittings** – our fully enclosed molding manufacturing method produces a uniform wall thickness while eliminating air entrapment. The result is a flat, smooth finish, both inside and out, which provides leak-tight pipe entries
- ◆ **Convenient Shipping and Storage** – sump boxes are nestable. Two sizes accept multiple frames to accommodate all common dispensers
- ◆ **Full-Access Working Area** – frame is attached after plumbing is complete
- ◆ **Mounting Flange** – sump rests on island form crossbars for support during installation

Wide-Access Fiberglass Dispenser Sumps



Ordering Specifications - Wide Access Fiberglass Dispenser Sumps

Sump Model #	Dimensions								Weight with Top		Box Part #	Top Assembly Part #
	A		B		C		D		lbs.	kg		
	in.	cm	in.	cm	in.	cm	in.	cm				
DSF-1123	15	38	11	28	37	94	23	58	94	43	E00590M	D02212
DSF-1123F *	15	38	11	28	37	94	23	58	94	43	E00590M	D02213

SL-1100 Urethane Sealant - One Tube required per Sump (Packaged 12 tubes/case)

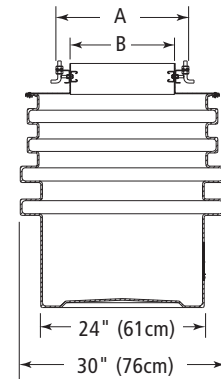
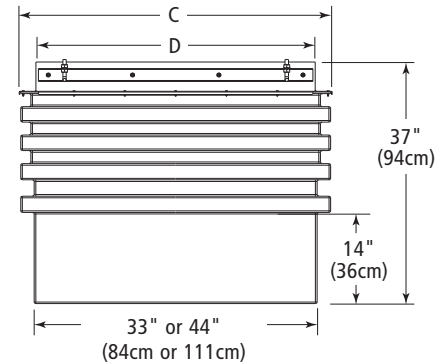
* Flush Mount model supplied without rain lip due to dispenser frame clearance limitations; Frame Gasket Included. Anchor bolts provided, Stabilizer Bar Kits ordered separately; One kit required for each emergency and vapor valve. Refer to FlexWorks Dispenser Sump Selection Chart (See Pages 38 - 39 of this catalog) to select sumps for particular dispensers. **Yellow indicates metal top model.**

** These sumps are designed for Conduitless applications.

*** C Conduitless



Wide-Access Polyethylene Dispenser Sumps



Features & Benefits:

- ◆ **Contractor-Friendly Installation** – open top provides unrestricted access to the inside of the containment chamber to facilitate entry fitting and piping installation. Dispenser mounting frame is attached after plumbing is complete
- ◆ **Deeper Burial Capability** – 37" burial depth allows piping slope requirements to be met more easily in layouts with long piping runs
- ◆ **Simple Field-Height Adjustment** – the top portion of the chamber can be quickly and easily trimmed along the ribs to ensure maximum installation flexibility
- ◆ **Full Perimeter Liquid-Collection Channel** – facilitates quick leak detection and allows flexibility in locating leak sensors
- ◆ **Convenient Shipping and Storage** – sump boxes are partially nestable. Two chamber sizes accept multiple frames to accommodate all common dispensers
- ◆ **Polyethylene Top** – polyethylene top will not corrode

Ordering Specifications - Wide Access Polyethylene Dispenser Sumps

Sump Model #	Dimensions								Weight with Top		Box Part #	Top Assembly Part #
	A		B		C		D					
	in.	cm	in.	cm	in.	cm	in.	cm	lbs.	kg		
DSW-1123	15	38	11	28	37	94	23	58	94	43	E00590M	D02212
DSW-1123F *	15	38	11	28	37	94	23	58	94	43	E00590M	D02213
DSW-1630	20	51	16	41	37	94	30	76	87	40	E00590M	D02536

SL-1100 Urethane Sealant - One Tube required per Sump (Packaged 12 tubes/case)

* Flush Mount model supplied without rain lip due to dispenser frame clearance limitations; Frame Gasket Included. Anchor bolts provided, Stabilizer Bar Kits ordered separately; One kit required for each emergency and vapor valve. Refer to FlexWorks Dispenser Sump Selection Chart (See Pages 38 - 39 of this catalog) to select sumps for particular dispensers. **Yellow indicates metal top model.**

** Conduitless with Offset Top.

*** Conduitless Narrow Base.

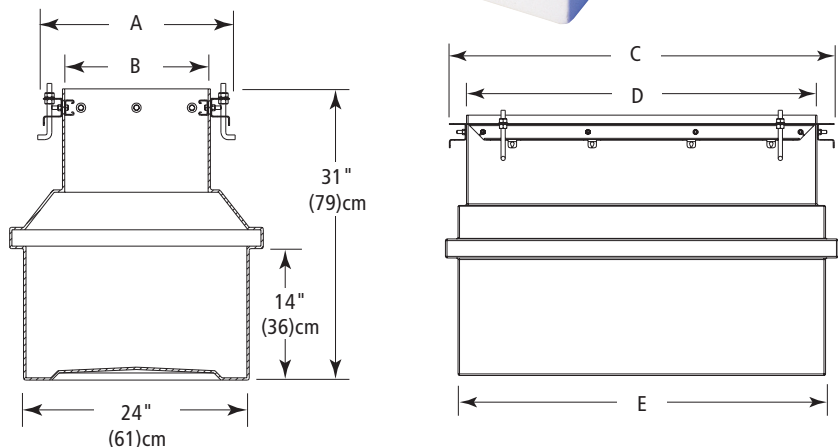
One-Piece Polyethylene Dispenser Sumps

FlexWorks Dispenser Sumps are installed beneath fuel dispensers to provide access to and secondary containment of dispenser plumbing, emergency shear valves and underground piping connections. Stabilizer Bar Kits are installed in FlexWorks Dispenser Sumps to provide reliable support for boss-mounted emergency shear valves.



Features & Benefits:

- ◆ **Multiple Models** – ensure a custom fit.
- ◆ **Structural Reinforcing on Large MPD Models** – prevents sump deformation from backfill and high water table forces.
- ◆ **Light Color** – preserves rigidity in sunlight before backfill and provides maximum visibility after installation.
- ◆ **Full Perimeter Liquid-Collection Channel** – facilitates quick leak detection and allows flexibility in locating leak sensors.
- ◆ **Integral Rain Lip** – protrudes into the dispenser frame to prevent surface water entry.
- ◆ **Easy Installation** – field-height adjustment capability and large pipe entry area ensures installation flexibility.
- ◆ **Many Are Available in a Conduitless Model** – eliminates conduit entry fittings and prevents a notorious leak point inside dispenser sumps.



Ordering Specifications* - One-Piece Polyethylene Dispenser Sumps

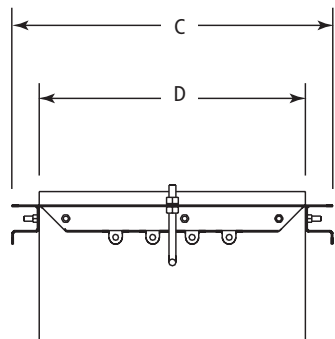
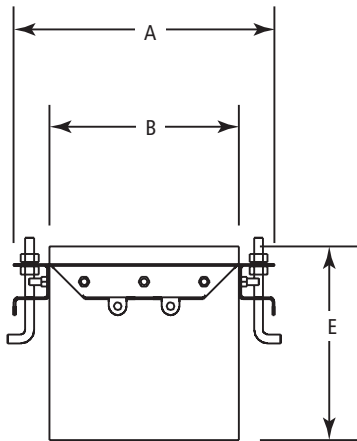
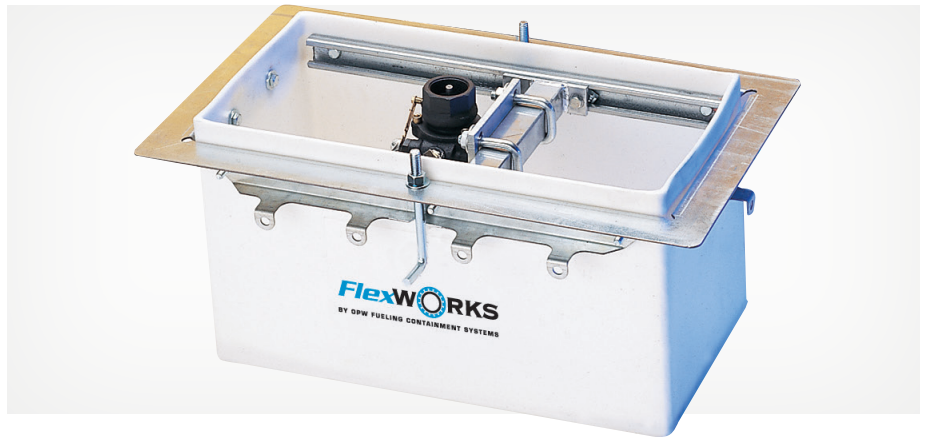
Model #	Conduitless Frame	A		B		C		D		E		Weight	
		in.	cm	in.	cm	in.	cm	in.	cm	in.	cm	lbs.	kg.
DS-1036	No	14	36	10	25	40	102	36	91	38	97	65	30
DS-1117F**	Yes	14.5	37	10.5	27	20.5	52	16.5	42	18.5	47	32	15
DS-1120	Yes	15	38	11	28	24	61	20	51	25	64	33	15
DS-1123	Yes	15	38	11	28	27	69	23	58	25	64	33	15
DS-1123B	Yes	18.5	47	11	28	27	69	23	58	25	64	33	15
DS-1123F **	Yes	15	38	11	28	27	69	23	58	25	64	33	15
DS-1229	No	15.5	39	11.5	29	33	84	29	74	31	79	49	22
DS-1242	Yes	15.5	38	11.5	29	46	117	42	107	44	112	84	38
DS-1543A	Yes	19	48	15	38	43	109	39	99	41	104	84	38
DS-1630	No	20	51	16	41	34	86	30	76	32	81	52	23
DS-1630B	No	20	51	16	41	34	86	30	76	32	81	52	23
DS-1642	Yes	20	51	16	41	46	117	42	107	44	112	84	38
DS-1836	Yes	21.5	55	17.5	44	40.5	103	36.5	93	39	99	70	32
DS-1928	Yes	18	46	14.8	38	30	76	26	66	28.5	72	50	23
DS-1741	No	21	53	17	43	44.7	114	40.6	103	42.6	108	80	36

* Refer to FlexWorks Dispenser Sump Selection Chart to select sumps for particular dispensers (See pages 38 - 39 of this catalog)

** Flush mount model supplied without rain lip due to dispenser frame clearance limitations; Frame gasket included. Anchor bolts provided, Stabilizer Bar Kits ordered separately; One kit required for each emergency and vapor shear valve.

FlexWorks Polyethylene Dispenser Pans

FlexWorks Dispenser Pans are installed beneath fuel dispensers to provide secondary containment of dispenser plumbing and emergency shear valves. Dispenser pans are commonly used with rigid fuel pipe and to retrofit existing dispensers.



Ordering Specifications FlexWorks Polyethylene Dispenser Pan

Model *	Conduitless Frame	Dimensions										Weight	
		A		B		C		D		E			
		in.	cm	in.	cm	in.	cm	in.	cm	in.	cm	lbs.	kg
DP-1117F	Yes	14½	37	10½	27	20½	52	16½	42	11	28	20	9
DP-1123	Yes	15	38	11	28	27	69	23	58	11	28	23	10
DP-1123F	Yes	15	38	11	28	27	69	23	58	11	28	23	10
DP-1543	Yes	19	48	15	38	43	109	38.8	99	11	28	44	20
DP-1630	No	20	51	16	41	34	86	30	76	11	28	38	17
DP-1836	Yes	21½	55	17½	44	40	102	36	91	11	28	50	23

*Flush Mount Model (F) Supplied without Rain Lip Due to Dispenser Frame Clearance Limitations; Supplied with Frame Gasket. Anchor Bolts Provided, Stabilizer Bar Kits Ordered Separately; One Kit Required for each Emergency Shut-Off Valve.

DEF Containment Sumps

Offering both the DEF Loop Sump - a fast, DEF-specific bolt-on sump with the same great value of Loop - and the same bolt-on containment sumps to be installed for a traditional UDC.

- ◆ DEF containment adapted to the same profile as our one-piece polyethylene Dispenser Sumps for Encore and Ovation II.
- ◆ Depending on dispenser configuration, sumps can be bolted on either side to fit within the dispenser manufacturer's footprint.
- ◆ For an Encore dispenser, the DS-DEF-1836 is a traditional style DEF UDC, which can be added to either a DSE-1836, or DS-1836. This sump requires an SBK-1800 stabilizer bar.



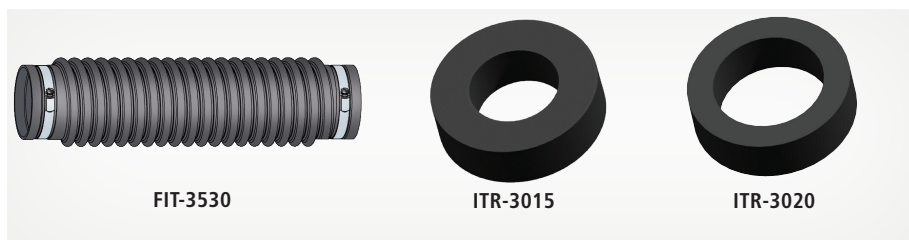
Standard Configuration

Containment Sump		DEF Sump
DSE-1836 DS-1836	+	DS-DEF-1836
DS-1535	+	DS-DEF-1535

Loop Configuration

DSLH/DSLHF-XX-1836-XXX	+	DSLXX-DEF-XX-1836
DSLH/DSLHF-XX-1535-XXX	+	DSLXX-DEF-XX-1535L/R

Available Heat Trace Entry Fittings – HEF-4015G and HEF-4020G – for 1.5" or 2" FlexWorks designed specifically for DEF.



Flex Connector Isolation Components

The FIT-3530 is used to isolate and contain Flex Connectors.

Ordering Specifications - Dispenser Pan Fittings & Accessories

Model	Application	Weight	
		lbs.	kg
FIT-3530	Flexible Isolation Jacket, 30" (76 cm) Long x 3.5" (9 cm) I.D.	2	1
ITR-3015	Isolation Tube Reducer, 3" x 1.5"	1	.5
ITR-3020	Isolation Tube Reducer, 3" x 2"	1	.5

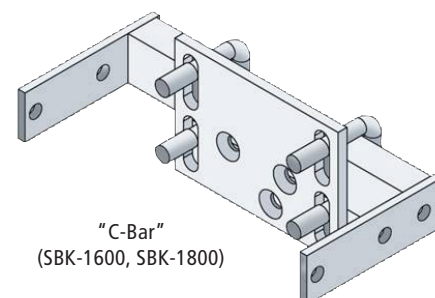
Dispenser Sump Accessories

FlexWorks pipe Stabilizer Bar Kits provide reliable support inside dispenser sumps/pans for boss-mounted emergency shear valves. One kit is required for each emergency valve and vapor shear valve.

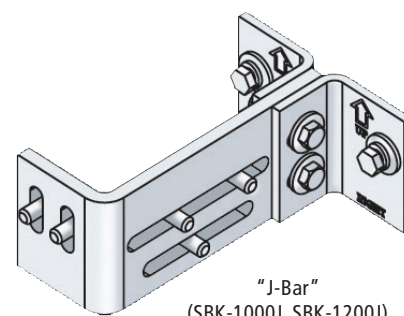
Ordering Specifications - Stabilizer Bar Kit

Model #	0 (for Sump/Pan) DS-, DSW, DSF, FDS	Weight	
		lbs.	kg
SBK-1000J	1036	5	2.3
SBK-1100J	1117F, 1123, 1123F, 1120	5	2.3
SBK-1200J	1229, 1242	6	2.8
SBK-1500	Ovation Product Line (DS-1543A, DSW-1543, DS-1928)	7	3
SBK-1500V	Ovation Vapor Line (DSW-1543, DS1543A)	7	3
SBK-1600	1630, 1642	7	3
SBK-1700	DSF-1741C	7	3
SBK-1800	1836, FDS-4021	7	3
SBO-0250	Ovation FDS-4319	6	2.8
SBO-0300	FDS-4319-DW	6	2.8
SBO-0700	FDS-4021-DW	6	2.8
MPK-10*	Extra Mounting Plate Kit	2	1
C04400M	Stabilizer Bar Mounting Plate Only under the MPK-10*		

* Stabilizer bar is installed width-wise in dispenser sump. One valve mounting plate is included. Additional MPK-10 mounting plate kit is required for additional valves.



"C-Bar"
(SBK-1600, SBK-1800)



"J-Bar"
(SBK-1000J, SBK-1200J)

Automatic Fire-Extinguisher System

The FlexWorks Automatic Fire-Extinguisher System is a small, non-rechargeable fire extinguisher designed specifically to be installed in a containment sump underneath an aboveground fuel dispenser, and to automatically extinguish a fuel fire in the event of a dispenser knock-over. The FlexWorks Fire-Extinguisher System will automatically activate and discharge its extinguishing agent when the surrounding temperature reaches 175°F (79°C). The fire extinguisher comes with its own mounting bracket and can be mounted to a variety of surfaces. The fire extinguisher contains enough extinguishing agent to protect dispenser containment sumps up to a maximum capacity of 50 cubic feet.

Features

- ◆ Charged with a clean agent – FK-5-1-12
- ◆ Operating temperatures of 0°F to 130°F (-17.7°C to 54.4°C)
- ◆ One-year replacement warranty
- ◆ Low-cost solution to a potentially expensive problem

Benefits

- ◆ Extinguishes fuel fires quickly
- ◆ Provides year-round fire protection
- ◆ No certified annual testing required
- ◆ May reduce fire insurance premiums



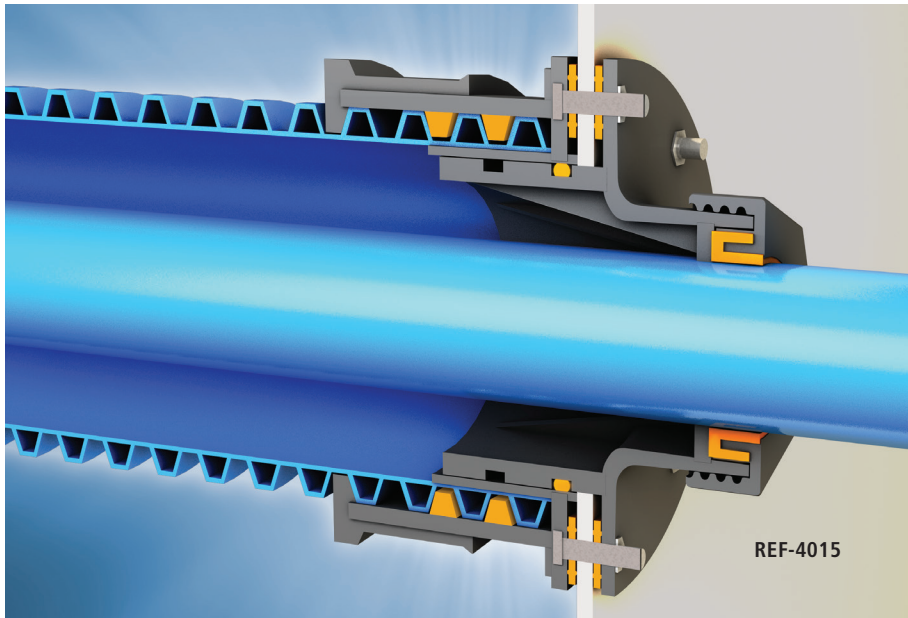
Fire Prevention

Dispenser and UST containment sumps offer significant environmental protection by providing secondary containment and corrosion protection of valves and pipe fittings. Under certain conditions, a potential fire hazard could develop. Should a fire occur inside the containment chamber, the FlexWorks Automatic Fire-Extinguisher System automatically extinguishes the fire in a matter of seconds, protecting patrons, underground piping, shear valves and sump.

Application	Dispenser Containment Sump
Agent	FK-5-1-12
Coverage Area:	50 ft. ³ (1.42m ³)
Atmospheric Life	Less than one day
Activation Temp:	175°F (79°C)
Operating Temp Range:	0°F to 130°F (-17.7°C to 54.4°C)

Ordering Specifications - FlexWorks Automatic Fire-Extinguisher System

Model	Description
FSS-50	FlexWorks Automatic Fire-Extinguisher System



The "REF" Rigid Entry Fitting

As a result of OPW's all-inclusive development program to bring Next Generation Solutions to the market, OPW is proud to announce the release of our new state-of-the-art Rigid Entry Fitting.

How is this fitting different than other fittings in the industry? Our new Rigid Entry Fitting has minimal exposed rubber, yet still accommodates ground movement. The sealing redundancy throughout the fitting provides maximum containment and unmatched protection from water intrusion.

Ordering Specifications - REF Rigid Entry Fitting

Model #	Description	Weight	
		lbs.	kg
REF-0075C	Rigid Entry Fitting, ¾" Rigid Conduit, Nylon	.90	0.40
REF-0100C	Rigid Entry Fitting, 1.0" Rigid Conduit, Nylon	.95	0.43
REF-0150	Rigid Direct Bury Entry Fitting for 1.5" Flexworks	2.35	1.06
REF-0200	Rigid Direct Bury Entry Fitting for 2" Flexworks	2.45	1.11
REF-0200F	Rigid Direct Bury Entry Fitting for 2.0" Smith SW FRP	2.45	1.11
REF-0200X	Rigid Direct Bury Entry Fitting for 2" LCX DW FRP	2.45	1.11
REF-0300F	Rigid Direct Bury Entry Fitting for 3" Smith SW FRP	2.85	1.30
REF-4015	FlexWorks Rigid Entry Fitting 4" x 1.5"	2.75	1.25
REF-4015DC*	Double-wall Compatible (DC) FlexWorks Rigid Entry Fitting 4" x 1.5"	2.75	1.25
REF-4020	FlexWorks Rigid Entry Fitting 4" x 2.0"	2.85	1.30
REF-4020DC*	Double-wall Compatible (DC) FlexWorks Rigid Entry Fitting 4" x 2.0"	2.85	1.30

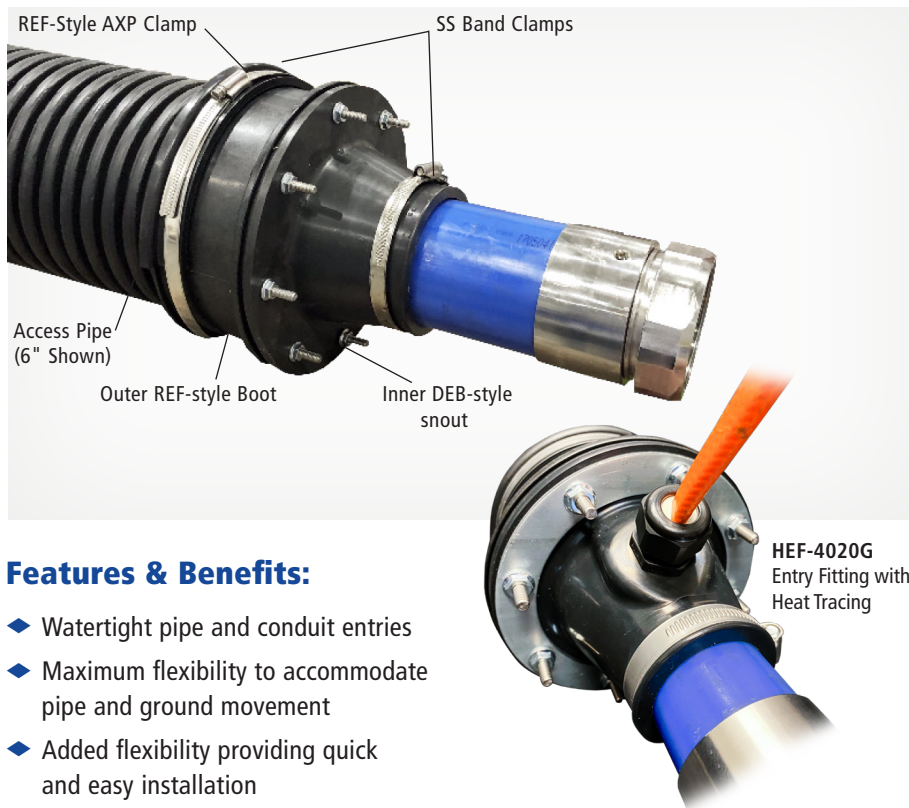
*Compatible with any double-wall sump up to 0.52 inches thick.
Ships with customer "acorn nuts" and O-rings to ensure interstice integrity.

Hole-Saw Size Table

Entry Fitting Model #	Hole-Saw Dimension
REF-0075C, REF-0100C	2.5"
REF-0150, REF-0200, REF-0200F, REF-0200X, REF-4015, REF-4020	4"
REF-0300F	5"

Features & Benefits:

- ◆ **Sealing redundancy throughout** – Maximum containment and unmatched protection from water intrusion
- ◆ **Preserves total accessibility** – For monitoring, maintenance, testing and repair
- ◆ **Maintains flexibility** to accommodate pipe and ground movement
- ◆ **Hard-shell exterior** – to weather the elements and abuse of the underground environment



Features & Benefits:

- ◆ Watertight pipe and conduit entries
- ◆ Maximum flexibility to accommodate pipe and ground movement
- ◆ Added flexibility providing quick and easy installation
- ◆ Provides clean, dry environment inside tank and dispenser sumps and accommodates various site installations
- ◆ Allows for easy field adjustments
- ◆ Can be repaired if damaged
- ◆ Internal and external clamps provide dual positive seal-off points
- ◆ Third-party tested and approved by UL/ULC
- ◆ Available heat-trace entry fittings with grommet

Hybrid Entry Fittings

FlexWorks Hybrid Entry Fittings are designed to seal the sump penetration. These entry fittings bring the best of both worlds from the robust and popular REF and legacy DEB lines of products. The outer buried half features a hard-shell exterior to weather the elements and abuse of the underground environment, the same as you find on an REF. The inner accessible half provides the flexibility of the DEB. The sealing redundancy throughout the fitting provides maximum containment and unmatched protection from water intrusion.



Ordering Specifications - Hybrid Entry Boot & Fitting

Model #	Application	Hole Saw	
		in.	cm
HEF-0751	1/2", 3/4", and 1" Conduit Hybrid Entry Fitting	2 1/2"	6.35
HEF-4010	4" to 1.0" Hybrid Entry Fitting for 4" Flexworks Access Pipe to 1.0" DW Flexworks Pipe	4"	10.16
HEF-4075	4" to 0.75" Hybrid Entry Fitting for 4" Flexworks Access Pipe to 0.75" DW Flexworks Pipe	4"	10.16
HEF-4015*	4" to 1.5" Hybrid Entry Fitting for 4" Flexworks Access Pipe to 2.0" DW Flexworks Pipe	4"	10.16
HEF-4015A	Hybrid Entry Fitting, 1.5" with Air Stem	4"	10.16
HEF-4015G	Hybrid Entry Fitting, 1.5" with Grommet for Heat Tracing	4"	10.16
HEF-4020*	4" to 2.0" Hybrid Entry Fitting for 4" Flexworks Access Pipe to 2.0" DW Flexworks Pipe	4"	10.16
HEF-4020A	Hybrid Entry Fitting, 2.0" with Air Stem	4"	10.16
HEF-4020G	Hybrid Entry Fitting, 2.0" with Grommet for Heat Tracing	4"	10.16
HEF-6030*	6" to 3.0" Hybrid Entry Fitting for 6" Flexworks Access Pipe to 3.0" DW Flexworks Pipe	5 3/4"	14.61
HEF-4175	4" to 0.75" and 1.0" Hybrid Entry Fitting for Fuel-Oil applications	4"	10.16

* For round-sump compatibility, add the correct ROUNDKIT for your application.

Round-Kit Guide

Original Part #	Plus	Kit for Round Sumps
HEF-4075	+	ROUNDKIT-14
HEF-4010		
HEF-4015(A/G)		
HEF-4020(A/G)		
HEF-4175		
HEF-0150		
HEF-0200		
REF-0150		
REF-0200		
HEF-6030	+	ROUNDKIT-16
REF-4015	+	ROUNDKIT-24
REF-4020		

Flexible Entry Boots

FlexWorks Flexible Entry Boots are reliable, safe seals for pipe and conduit entries into underground containment sumps. These entry boots allow for angled pipe entries and have no exposed metal parts to the underground environment. These entry boots are available in a variety of sizes and designs to accommodate rigid and flexible piping, ducting and access pipe.

Features & Benefits:

- ◆ Watertight pipe and conduit entries
- ◆ Installation on flat or round surface
- ◆ Added flexibility permitting angled entries up to 15 degrees

Sump Entry

Flexible entry boots have been tested to withstand a minimum of 6' of liquid head pressure. These seals provide a studded flange connection to create a positive and secure seal where the rubber contacts the sump wall and also around the pipe or conduit. Tightening down on a series of stud fasteners with a compression ring provides a high-compression mechanical seal compared to screw-on-type bulkhead seals.



Primary pipe and access pipe entering the containment sumps may not be perpendicular with the sump wall. Angled entries are generally a result of directional plumbing restrictions on the inside of the containment chamber due to space limitations. Flexible entry boots are flexible enough to permit angled pipe or conduit entries (on two axes) into the sidewall of a containment chamber. All flexible entry boots permit angled entries up to a 15-degree angle off the perpendicular center line in any direction without leaking or putting undue stress on the pipe or conduit seal.

Ordering Specifications - Single Flexible Entry Boot & Fitting

Model #	Application	Weight		Hole Saw	
		lbs.	kg	in.	cm
EBF-0751	1/2", 3/4" and 1" Conduit Entry Boot Fitting	1.2	0.5	2 3/8"	6.03
EBF-0150	1.5" Entry Boot Fitting for 1.5" DW FlexWorks Pipe	1.5	0.7	3 3/4"	9.52
EBF-0200	2" Entry Boot Fitting for 2" DW FlexWorks Pipe or 2" LCX	1.8	0.8	3 3/4"	9.52
EBF-0200F	2" Entry Boot Fitting for 2" Rigid Pipe	1.3	0.6	3 3/4"	9.52
EBF-0300	3" Entry Boot Fitting for 3" DW FlexWorks Pipe or 3" Rigid Pipe/LCX	1.8	0.8	5"	12.7
EBF-0400	4" Entry Boot Fitting for 4" Rigid Pipe/AXP Pipe	2.0	0.9	5 1/2"	13.97
EBF-0600	6" Entry Boot Fitting for 6" Rigid Pipe Saber Saw	3.0	1.3	7 1/4"	18.42
SAB-7400	4" Sump Access Boot – Can be used as a repair boot plug for EBF fittings	2.0	0.9	5"	12.7

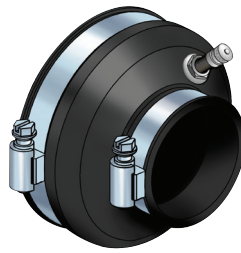
Flexible Entry Boot Manual Order Number: EBM-0001

Test Boots

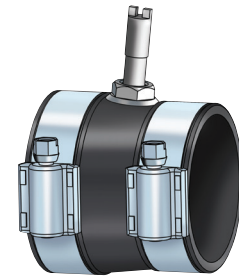
FlexWorks Test Boots are used to isolate and air-test the interstitial space between the primary and secondary pipe. One test boot is required for each pipe end.

The QCJ-2512 and QCT-2512 models allow users to quickly close the interstitial space of the pipe for testing. New EPA regulations maintain that secondarily contained areas must be tested for tightness after repairs and this new hardware saves time and money on labor when tests are necessary.

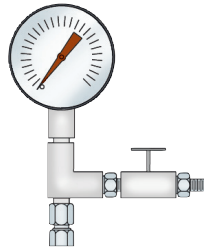
- QCJ-2512 (Junction) is used for pass-through UDCs, and the QCT-2512 (Termination) is used to terminate the run.
- Quick-close system allows for open systems to be closed and tested in minutes.



Models TBA-3015,
TBA-3020, TBA-4015 and TBA-4020



Models TBA-0075,
TBA-0100, TBA-0150 and TBA-0200



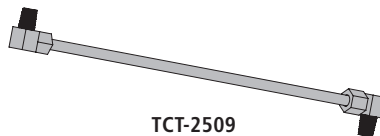
Test Gauge Assembly (TGA-15)



Test Jumper for Air Stems
(TJ-200A)



Test Line Termination Kit for Air Stems
(TLT-36A)



TCT-2509



TTT-2536

Ordering Specifications - Test Boot & Testing Equipment

Model #	Application	Weight	
		lbs.	kg
QCJ-2512	Junction Test Kit, Double Wall System		
QCT-2512	Junction Test Kit, Double Wall System		
TBA-0075	3/4" Test Boot with Air Stem	0.20	0.09
TBA-0100	1" Test Boot with Air Stem	0.20	0.09
TBA-0150	1.5" Test Boot with Air Stem	0.35	0.16
TBA-0200	2" Test Boot with Air Stem	0.40	0.18
TBA-0300	3" Test Boot with Air Stem	0.70	0.32
TBA-3015	3" to 1.5" Test Boot with Air Stem	0.35	0.16
TBA-3020	3" to 2" FRP Test Boot with Air Stem	0.40	0.18
TBA-4015	4" to 1.5" Test Boot with Air Stem	0.75	0.34
TBA-4020	4" to 2" Test Boot with Air Stem	0.75	0.34
TBA-4030	4" to 3" FRP Test Boot with Air Stem	0.70	0.32
TJ-200A	Test Jumper for Air Stems		
TLT-36A	Test Line Termination Kit for Air Stems		
TGA-15	Test Gauge Assembly		
TCT-2509	Test Jumper for Double-Wall Coupling (DPC and SBC Series)		
TTE-5	Replacement Brass Elbows for Test Tubes (5 per bag)		
TTT-2536	Test Tube Termination Kit for Double-Wall Coupling (DPC and SBC Series)		



QCJ-2512

Flexible Piping Systems for Fuel Oil & Generator Applications

The FlexWorks Fuel Oil Piping System is designed to provide a reliable fuel-supply system to generators and boilers from remote fuel tanks. Typical applications include both a 3/4" supply and a 1" overflow return line running from a remote AST or UST to a generator engine or boiler day tank. Both lines are typically inserted into a common FlexWorks Access Pipe to provide retractable access to the fuel lines. OPW will cut fuel oil pipe to length at no charge.

Ordering Specifications Specialty Fittings

Model #	Application
PDT-411	4" x 1" x 1" Double Tap Bushing
PTA-4175	Transition Assembly
TBA-4175	4" Fuel Oil Boot Transition Assembly
TBA-4175A	4" Fuel Oil Boot Transition Assembly with Air Stem

Model #	Application
SBC-2075	Swivel Bolt-On Coupling 3/4" NPT
SBC-2100	Swivel Bolt-On Coupling 1" NPT

HEF-4175 Double Entry Boot Fitting

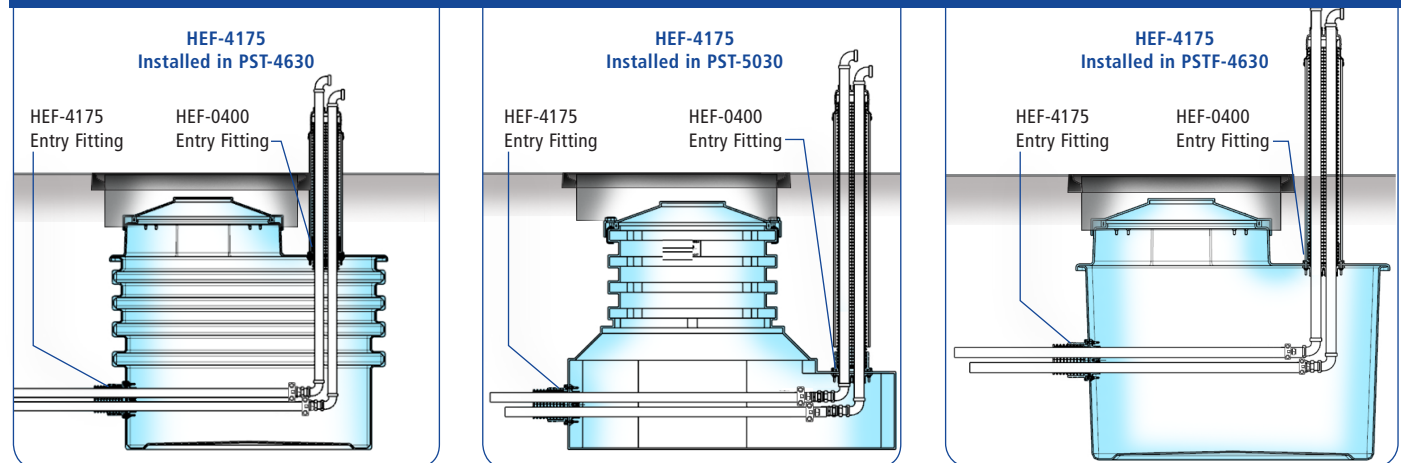


3/4" Primary Pipe with SBC Fitting

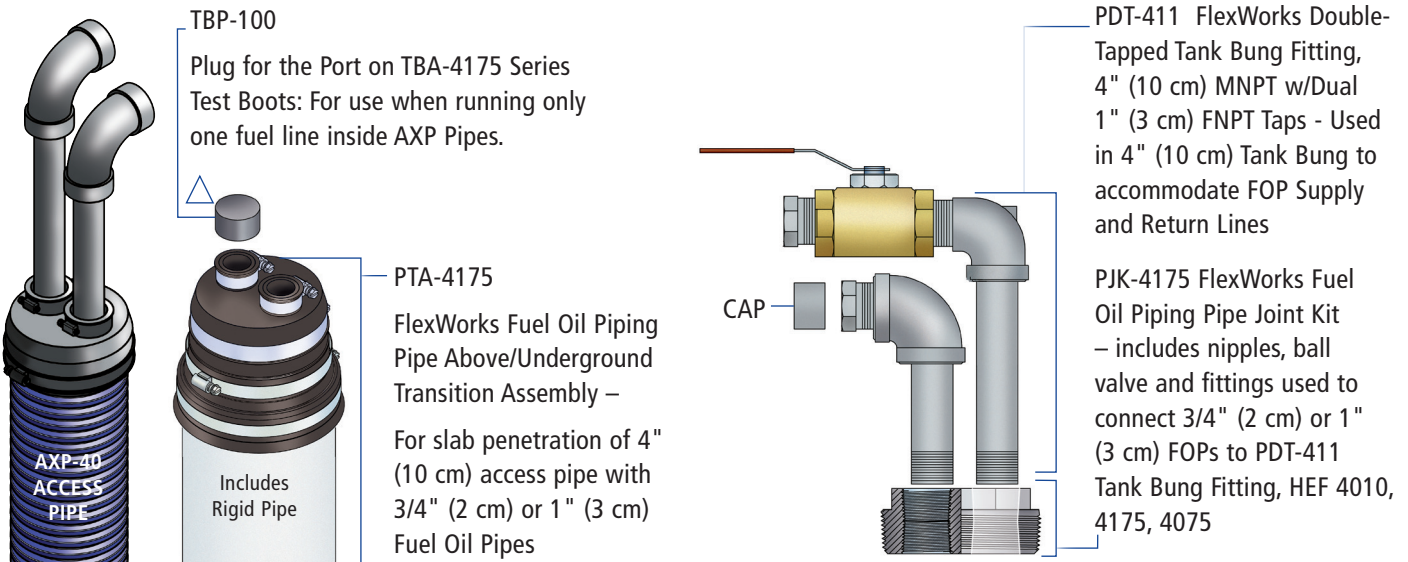


1" Primary Pipe with SBC Fitting

AST APPLICATIONS



Transition Assembly Specialty Fittings - 3/4" and 1"



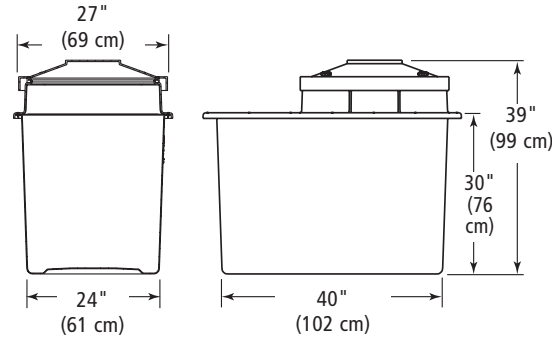
Transition Sumps

FlexWorks Above-Grade/Below-Grade Transition Sumps

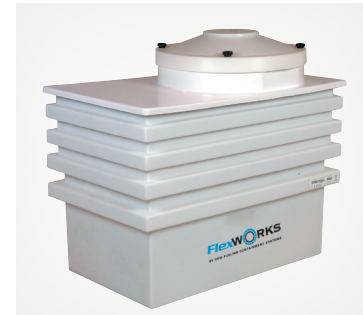
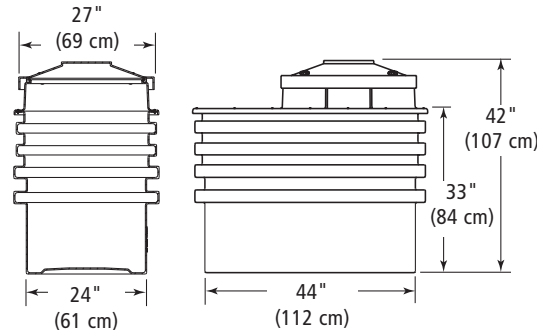
Model PSTF-4630 Transition Sump (Fiberglass Sump/Fiberglass Top)

- ◆ Large, injection-molded FRP containment chambers are stackable for convenient shipping and storage
- ◆ Removable FRP top allows maximum access during installation of fittings and equipment, and provides a rigid entry fitting area adjacent to the cover for vertical entry of above-grade piping
- ◆ The PSTF-4630 is not adjustable, but FRP Sump Height Extenders (DSFE-4612) are available for the PSTF-4630 to accommodate deeper-bury applications

Model PSTF-4630 Transition Sump (Fiberglass Sump/Fiberglass Top)



Model PST-4630 Transition Sump (Polyethylene Sump/Fiberglass Top)



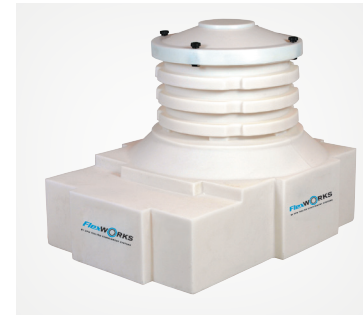
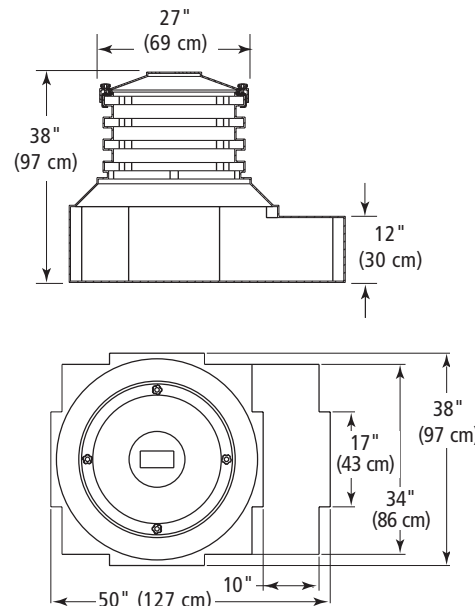
Model PST-4630 Transition Sump (Polyethylene Sump/Fiberglass Top)

- ◆ Large, heavily ribbed polyethylene containment chamber provides structural rigidity
- ◆ Adjustable to a minimum of 26"

Model PST-5030 One-Piece Polyethylene Transition Sump

- ◆ Flat entry fitting area extending from the sump base accommodates vertical pipe entries
- ◆ Heavily ribbed riser provides strength and rigidity
- ◆ Adjustable to a minimum of 29"

Model PST-5030 One-Piece Polyethylene Transition Sump



Ordering Specifications - Specialty Fitting

Model #	Application	Height		Weight	
		in	cm	lbs	kg
PSTF-4630	Fiberglass Transition Sump with Fiberglass Top, Poly Cover	39	99	90	41
PST-4630	Poly Transition Sump with Fiberglass Top, Poly Cover	42	107	100	45
PST-5030	One-Piece Poly Transition Sump with Poly Top, 38" x 50"	38	97	100	45
PTS-4021	Two-Piece Poly Transition Sump with Poly Top	46.5	118	110	49
DSFE-4612	Fiberglass Sump Extension	12	31	25	11

Replacement Parts

Part #	Description
H13257M	Knob (each)
H13971	Knob Kit (6 Pack)
H13425M	27" Seal
D02095M	27" Poly Cover
DSC-4021B	Top Assembly for PTS-4021

Special Application Sumps & Extensions

FlexWorks Special Application Sumps are installed below-grade and provide a convenient means of housing a multitude of underground piping connections and equipment, including valves, filters, meters and pumps. The PSL-3830 Line Connection Sump has large horizontal flats to accommodate multiple piping entries. The PSL-3630 Tall Mini-Sump has long vertical flats to accommodate applications with varying pipe entry heights. The PSL-2430 Mini-Sump is ideal for connecting long pipe runs in a contained area.



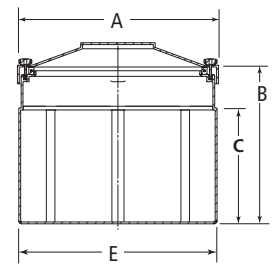
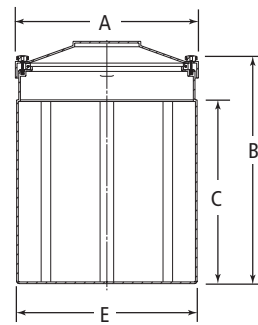
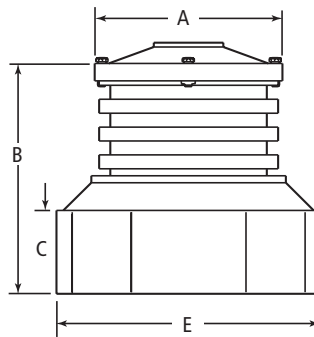
PSL-3830



PSL-3630



PSL-2430

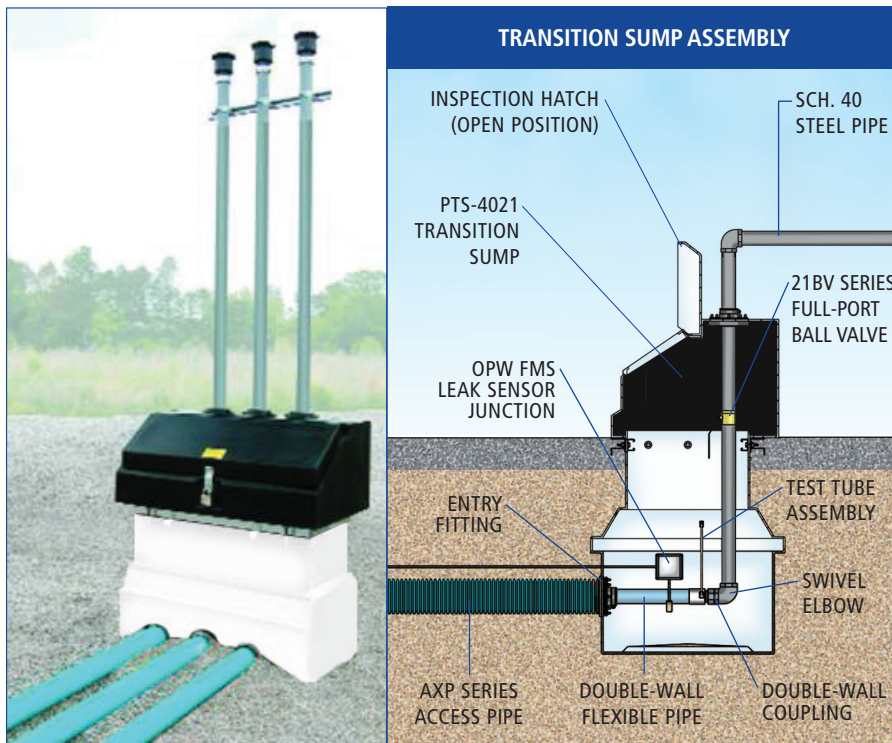


Ordering Specifications - Polyethylene Tank Sumps (with Compression Fit Covers)

Model #	Application	Dimensions										Burial Depth						Weight	
		Manway Dia.		A Cover		B Height		Dimesions CXE		# of Panels	E Base		max.		min.		lbs.	kg	
		in.	mm	in.	mm	in.	mm	in.	mm		in.	mm	in.	mm	in.	mm			
PSL-2430	Special Application Sump, 24" x 30"	30	762	27	686	24	610	16 x 10	406 x 254	8	26	660	36	914	26	660	36	16	
PSL-3830	In-Line Sump, 38" x 30"	30	762	27	686	63	1,600	12 x 38	305 x 965	12	38	965	41	1041	29	737	85	38	
PSL-3630	Special Application Sump, 36" x 30"	30	762	27	686	36	914	28 x 20	711 x 508	8	26	660	48	1219	40	1016	42	19	

Replacement Parts

Part #	Description
D02095M	27" Poly Cover
H13264M	27" Seal
H13257M	Knob (each)



Transition Sumps

Model PTS-4021 Transition Sump (2 Piece - Polyethylene Sump/ Polyethylene Top)

- ◆ Non-corroding, polyethylene sump container
- ◆ Weatherproof lockable cover
- ◆ Exterior anchoring system

AST Application: Provides secondary containment and accessibility to the fittings that connect the underground supply piping to the rigid supply piping that leads from an aboveground storage tank.

Vent Stack Application: Transition sump is used for containment and accessibility to the fittings. At the vent stack, where the underground vent piping connects to the rigid vent stack piping.

