



DEFINING | WHAT'S NEXT

September 5, 2023

OPW Pre-Plumbed DSE Dispenser Sump

Dear Valued Distributors:

Now that we have just celebrated Labor Day, please join OPW in celebrating "Labor-Less" Day! You can now enjoy the ability to install your fueling site piping and a containment system using less labor. Along with less labor comes less installation time, less cost, less parts, less complexity, and less opportunity for installation errors.

OPW Retail Fueling is proud to announce the availability of the new **Pre-Plumbed DSE dispenser sump**. Utilizing the quality and value of the DSE fiberglass dispenser sump, the Pre-Plumbed DSE was created to help customers save time, reduce installation variability, and reduce installation costs. Complete with factory-assembled and tested components, the Pre-Plumbed DSE continues the OPW E-Series tradition of superior design and materials, faster lead times, and affordability.

We have taken the best piping and containment components from OPW and pre-assembled and factory tested for a "Plug and Play" installation. This system features the all new DSE fiberglass sump made using an SMC (Sheet Molded Compound) to give a consistent part every time with smooth sealing surfaces on both inside and outside sump walls. Also included is the legendary OPW 10-Plus emergency valve – the industry's highest standard when it comes to shear valve performance and site safety.

For over 15 years, the OPW Loop System has become the most specified piping system in the retail fueling industry. You can now have all the advantages of the iconic OPW Loop System without the "loop". Specifically for customers or jurisdictions who still request piping slope back to the tank.

[Download the Pre-Plumbed DSE Product Information Page](#)

Download the Pre-Plumbed DSE Brochure/Ordering Guide

Download the E-Series Product Brochure

Customizable Components

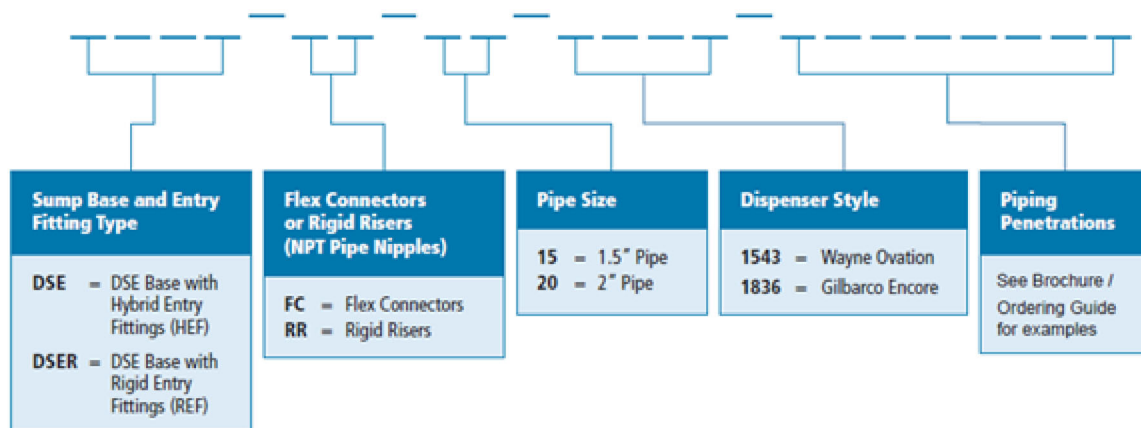
The Pre-Plumbed DSE ships pre-assembled with a customizable selection of components that include: tops, stabilizer bars, pipe entry fittings, emergency shear valves, rigid risers or flex connectors, elbows/tees. Test terminations and test jumpers are included.

Components	Part Configurations			
Base	DSE-BASE			
Tops	DSE-1836	Gilbarco Encore	DSE-1543	Wayne Ovation
Stabilizer Bars	SBK-1800	Gilbarco Encore	SBK-1500	Wayne Ovation
Pipe Entry Fittings	REF-4015 REF-4020	1.5" Rigid Entry Fittings 2.0" Rigid Entry Fittings	HEF-4015 HEF-4020	1.5" Hybrid Entry Fittings 2.0" Hybrid Entry Fittings
Emergency Shear Valves	10P-0152	10 Plus 1.5" Double Poppet		
Flex Connectors or Rigid Risers (1.5" x 18")	217817	1.5" NPT Pipe Nipple, 18" length (Rigid Riser)	FC15-SWM18	1.5" Flex Connector Male Swivel x Male, 18" length
Tees or Elbows (1.5" or 2" NPSH x NPT)	STF-1515 STF-2215	1.5" Tees 2.0" Tees	SEF-1515 SRE-2015	1.5" Elbows 2.0" Elbows
Test Tube and Test Jumpers for DPC Couplings	TTT-2536	Test Termination	TCT-2509	Test Jumper

Ordering Guide

A similar ordering guide template as the OPW Loop System™ is utilized for familiarity purposes and customer ease of use. All the components to complete a containment sump on site found in a single part number. See the [Pre-Plumbed DSE Brochure/Ordering Guide](#) for a full description.

Pre-Plumbed DSE Dispenser Sump Ordering Guide



Pricing

Pricing will be determined by the Pre-Plumbed DSE's configuration, including the number of emergency shear valves, entries, and NPT pipe nipples or flex connectors. Attached is a sample price list of a selection of *common configurations*. Please contact your district manager for pricing on additional configuration(s).

Download the Pre-Plumbed DSE Dispenser Sump Price List in Excel Format

We're excited for the opportunity to continue providing our industry solutions that help reduce installation time, costs, and complexities. If you have any questions, please reach out to your OPW District Manager or our Customer Service Department at 1-800-422-2525. If you would like more information on our complete product line, please visit our website at www.opwglobal.com.

Be on the lookout for more exciting announcements from OPW Retail Fueling, as we continue to **Define What's Next**. As always, we appreciate your continued support.

Regards,

Justin Eybs
Product Manager
OPW Retail Fueling



OPW Retail Fueling

3250 US Highway 70 Business W • Smithfield, North Carolina, USA 27577 Tel: 1 (800)-422-2525

Copyright ©2009-2017 OPW, A Dover company

[unsubscribe from this list](#) [update subscription preferences](#)

This email is a commercial advertisement sent in compliance with the CAN-SPAM Act of 2003. If you wish to be excluded from future mailings, please use the unsubscribe link at the bottom of this email to let us know.

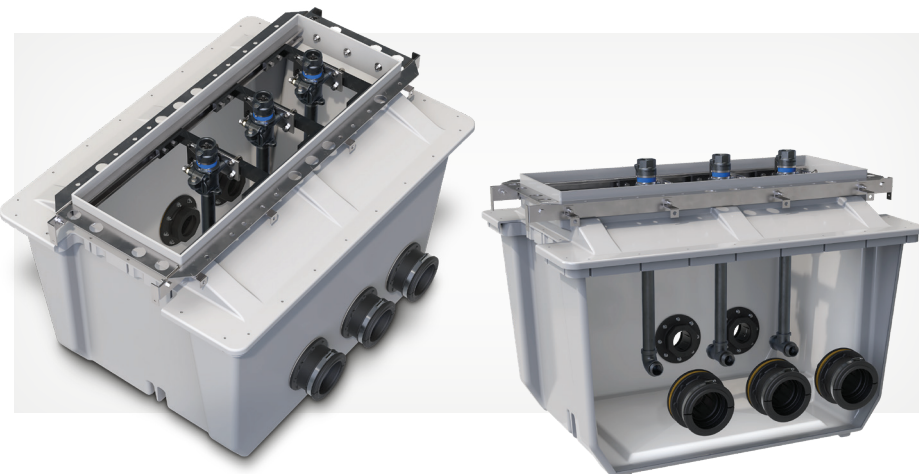
Pre-Plumbed DSE Dispenser Sump

Utilizing the quality and value of the DSE Dispenser Sump, OPW now offers a Pre-Plumbed DSE for customers who wish to save time and costs of installation.

Complete with factory-assembled and tested components, the Pre-Plumbed DSE continues the OPW E-Series tradition of superior design, materials, and affordability. The OPW Loop System without the "loop".

The Pre-Plumbed DSE ships installed with the following items:

- ◆ Tops (Wayne Ovation or Gilbarco Encore)
- ◆ Pipe Entry Fittings
- ◆ Stabilizer Bars
- ◆ OPW 10Plus Double-Poppet Emergency Shear Valves
- ◆ Flex Connectors or Rigid Risers (NPT Pipe Nipples)
- ◆ Elbows/Tees
- ◆ Test Tubes and Jumpers for DPC Couplings



Features & Benefits:

- ◆ **Quality Components Factory-Installed** – pre-plumbed dispenser sump provides convenience and installation cost/time savings
- ◆ **Piece-of-Mind Installation** – components are factory installed and tested in a controlled environment eliminating potential costly installation errors in the field
- ◆ **Advanced Composite Technology** – premium construction of a robust fiberglass product with smooth surfaces on both sides of the sump walls and consistent thickness, blend and shape for strong bonds with entry fittings
- ◆ **Customizable** – select your configurations with desired Hybrid Entry Fittings (HEF) or Rigid Entry Fittings (REF), Flex Connectors or Rigid NPT Pipe Nipples, and Encore or Ovation Tops complete with stabilizer bars
- ◆ **Efficient Manufacturing and Fast Lead Times** – provides best-in-class quality and value shipped quickly
- ◆ **Loop System Advantages** – all the features & benefits of the legendary OPW Loop System for jurisdictions that still require piping slope back to the tank

Components	Part Configurations			
Base	DSE-BASE			
Tops	DSE-1836	Gilbarco Encore	DSE-1543	Wayne Ovation
Stabilizer Bars	SBK-1800	Gilbarco Encore	SBK-1500	Wayne Ovation
Pipe Entry Fittings	REF-4015	1.5" Rigid Entry Fittings	HEF-4015	1.5" Hybrid Entry Fittings
	REF-4020	2.0" Rigid Entry Fittings	HEF-4020	2.0" Hybrid Entry Fittings
Emergency Shear Valves	10P-0152	10 Plus 1.5" Double Poppet		
Flex Connectors or Rigid Risers (1.5" x 18")	217817	1.5" NPT Pipe Nipple, 18" length (Rigid Riser)	FC15-SWM18	1.5" Flex Connector Male Swivel x Male, 18" length
Tees or Elbows (1.5" or 2" NPSH x NPT)	STF-1515	1.5" Tees	SEF-1515	1.5" Elbows
	STF-2215	2.0" Tees	SRE-2015	2.0" Elbows
Test Terminations and Jumpers for DPC Couplings	TTT-2536	Test Termination	TCT-2509	Test Jumper

For Ordering Guide, see Pre-Plumbed DSE Brochure or visit: opwglobal.com/dse

OPW INTRODUCES PRE-PLUMBED DSE DISPENSER SUMP



Peace-of-Mind
Installation



Factory-Assembled
and Tested



Customizable



LEARN MORE. VISIT US AT opwglobal.com/opw-retail-fueling/pre-plumbed-dse

Factory-Installed and Tested Components

DSE Tops (with Stabilizer Bars)

Compatible with both Wayne Ovation and Gilbarco Encore dispensers, OPW Pre-Plumbed DSE Dispenser Sump tops come pre-installed with stabilizer bars.

10 Plus Emergency Shut-Off Valves

OPW's double-poppet 1.5" emergency shut-off valves come standard in all Pre-Plumbed DSEs. The patented SmartGuard™ design helps contain shear-groove leaks to reduce safety risks.

DSE Dispenser Sump Base

This innovative fiberglass base is made with Advanced Composite Technology, creating consistent, smooth walls (inside and out) to help prevent leaks and other maintenance issues.

Dual-Sided Pipe Entry Fittings (Rigid or Hybrid)

Rigid (REF) or Hybrid (HEF) Entry Fittings come factory-installed in 1.5" or 2" piping sizes, saving time and resources in the field.

Flex Connectors or NPT Pipe Nipples (Rigid Risers)

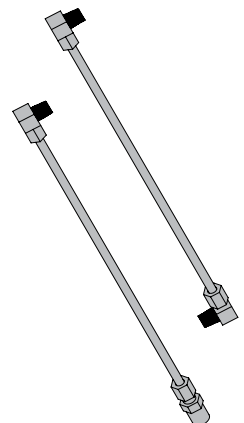
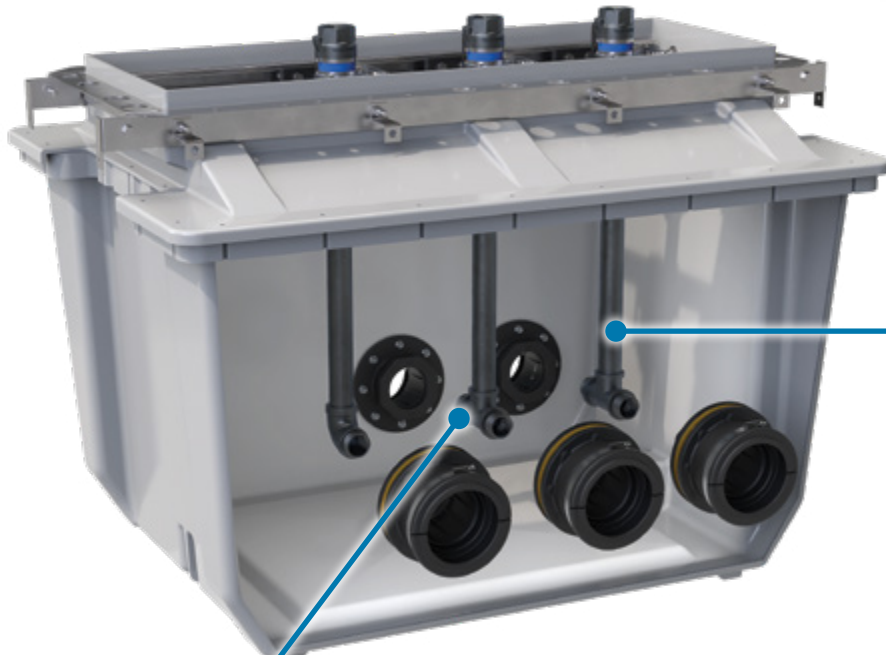
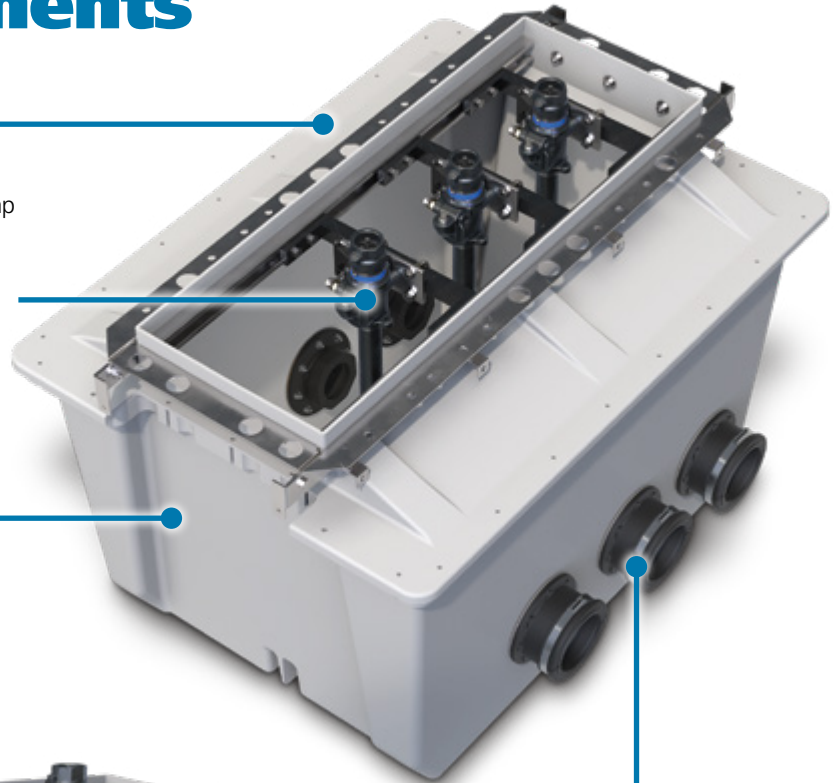
Stainless-steel 1.5" x 18" flexible connectors or NPT pipe nipples (Rigid Risers) are factory-installed and tested.

Tees/Elbows

NPSH x NPT tees or elbows (1.5" or 2") are pre-installed onto Flex Connectors or Rigid Risers and tested.

Secondary Test Kits and Test Jumpers for DPC

FlexWorks™ Test Jumpers are used to isolate and air-test the interstitial space between the primary and secondary pipe. Correct number of test kits included with each sump.



Pre-Plumbed DSE Dispenser Sump

Utilizing the quality and value of the DSE Dispenser Sump, OPW now offers a Pre-Plumbed DSE model for customers who wish to save time, reduce installation variability and reduce installation costs. Complete with factory-assembled and tested components, the Pre-Plumbed DSE continues the OPW E-Series tradition of superior design, materials and affordability.

Features & Benefits:

Quality Components Factory-Installed – pre-plumbed dispenser sump provides convenience and installation cost/time savings.

Piece-of-Mind Installation – components are factory-installed and tested in a controlled environment, helping to eliminate potential costly installation errors in the field.

Advanced Composite Technology – premium fiberglass construction with smooth surfaces on both sides of the sump walls and consistent thickness, blend and shape for strong bonds with entry fittings.

Site Configurable – Built specific to your piping site layout

Customizable – customize your configuration with Hybrid Entry Fittings (HEF) or Rigid Entry Fittings (REF), Flex Connectors or Rigid NPT Pipe Nipples, and Encore or Ovation Tops complete with Stabilizer Bars.

Efficient Manufacturing and Fast Lead Times – provides best-in-class quality and value shipped quickly.

Testable Loop System Advantages – all the features and benefits of the legendary OPW Loop System for use in those jurisdictions that still require piping to slope back to the tank.

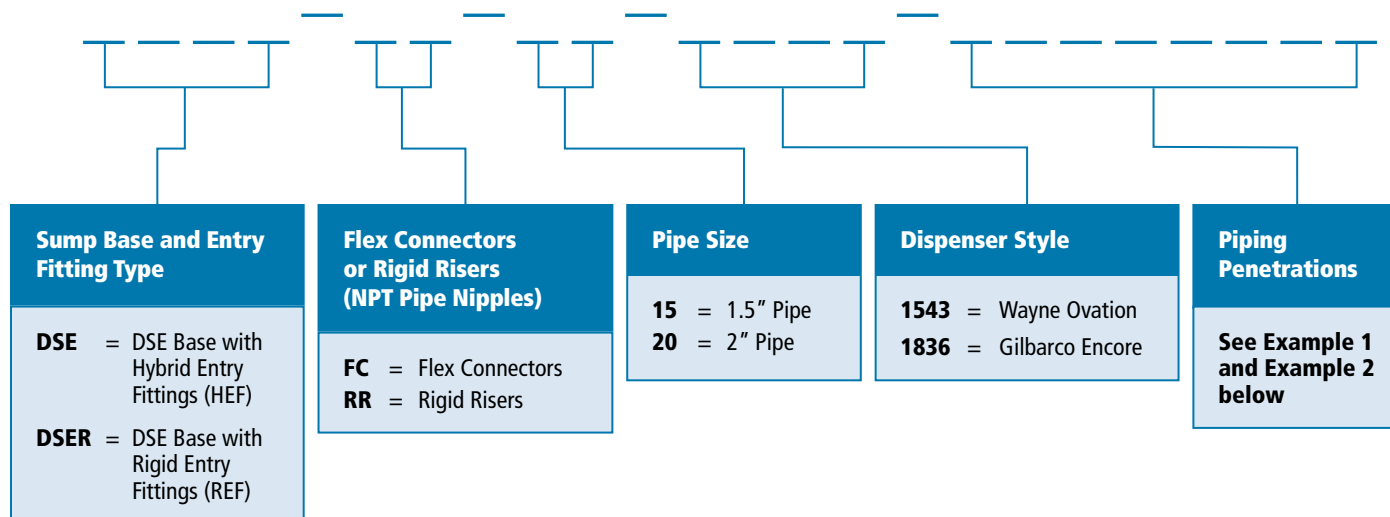


Components

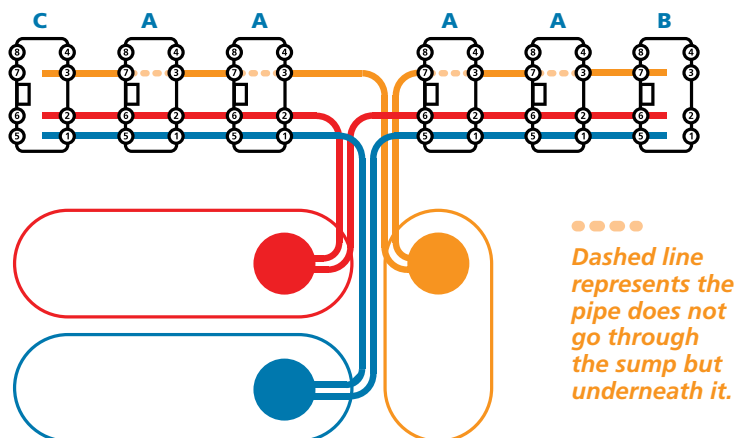
Part Configurations

Base	DSE-BASE			
Tops	DSE-1836	Gilbarco Encore	DSE-1543	Wayne Ovation
Stabilizer Bars	SBK-1800	Gilbarco Encore	SBK-1500	Wayne Ovation
Pipe Entry Fittings	REF-4015	1.5" Rigid Entry Fittings	HEF-4015	1.5" Hybrid Entry Fittings
	REF-4020	2.0" Rigid Entry Fittings	HEF-4020	2.0" Hybrid Entry Fittings
Emergency Shear Valves	10P-0152	10 Plus 1.5" Double Poppet		
Flex Connectors or Rigid Risers (1.5" x 18")	217817	1.5" NPT Pipe Nipple, 18" length (Rigid Riser)	FC15-SWM18	1.5" Flex Connector Male Swivel x Male, 18" length
Tees or Elbows (1.5" or 2" NPSH x NPT)	STF-1515	1.5" Tees	SEF-1515	1.5" Elbows
	STF-2215	2.0" Tees	SRE-2015	2.0" Elbows
Test Terminations and Jumpers for DPC Couplings	TTT-2536	Test Termination	TCT-2509	Test Jumper

Pre-Plumbed DSE Dispenser Sump Ordering Guide



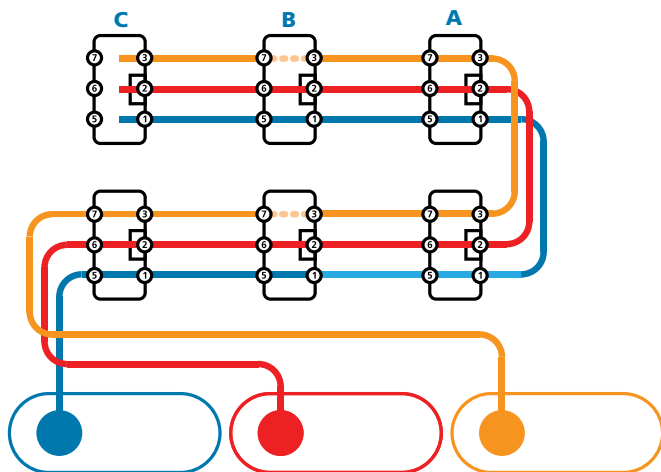
Example 1



Example 1

- DSE-FC-15-1836-1256
 - DSE-FC-15-1836-567
 - DSE-FC-15-1836-123
- DSE with Hybrid Entry Fittings (DSE in part number)
 - Flex Connectors (FC in part number)
 - 1.5" pipe (15 in part number)
 - Gilbarco Encore dispensers (1836 in part number)
 - The two 3+1 dispensers have different configurations, B & C

Example 2



Example 2

- DSER-RR-15-1543-123567
 - DSER-RR-15-1543-1256
 - DSER-RR-15-1543-123
- DSE with Rigid Entry Fittings (DSER in part number)
 - Rigid Risers (RR in part number)
 - 1.5" pipe (15 in part number)
 - Wayne Ovation dispensers (1543 in part number)
 - The product lines cross in order to keep the dispenser "Side A" consistent

OPW Pre-Plumbed DSE - List Pricing Sept. 5, 2023

Sample of Common Configurations

<u>Part Number</u>	<u>Description</u>	<u>List Price</u>
DSER-FC-15-1543-1256 DSER-FC-20-1543-1256 DSER-FC-15-1836-1256 DSER-FC-20-1836-1256 DSE-FC-15-1543-1256 DSE-FC-20-1543-1256 DSE-FC-15-1836-1256 DSE-FC-20-1836-1256	DSE Base Encore or Ovation Top 1.5" or 2", REF or HEF Entry Fittings 18" Flex Connectors Entries at 1256	\$4,141.58
DSER-RR-15-1543-1256 DSER-RR-20-1543-1256 DSER-RR-15-1836-1256 DSER-RR-20-1836-1256 DSE-RR-15-1543-1256 DSE-RR-20-1543-1256 DSE-RR-15-1836-1256 DSE-RR-20-1836-1256	DSE Base Encore or Ovation Top 1.5" or 2", REF or HEF Entry Fittings 18" Rigid Risers/NPT Pipe Nipples Entries at 1256	\$3,460.82
DSER-FC-15-1543-123567 DSER-FC-20-1543-123567 DSER-FC-15-1836-123567 DSER-FC-20-1836-123567 DSE-FC-15-1543-123567 DSE-FC-20-1543-123567 DSE-FC-15-1836-123567 DSE-FC-20-1836-123567	DSE Base Encore or Ovation Top 1.5" or 2", REF or HEF Entry Fittings 18" Flex Connectors Entries at 123567	\$5,440.72
DSER-RR-15-1543-123567 DSER-RR-20-1543-123567 DSER-RR-15-1836-123567 DSER-RR-20-1836-123567 DSE-RR-15-1543-123567 DSE-RR-20-1543-123567 DSE-RR-15-1836-123567 DSE-RR-20-1836-123567	DSE Base Encore or Ovation Top 1.5" or 2", REF or HEF Entry Fittings 18" Rigid Risers/NPT Pipe Nipples Entries at 123567	\$4,419.58

THE ALL NEW E-SERIES!



 Premium
Quality

 Fastest
Lead Times

 Extraordinary
Value

OPW 
RETAIL FUELING
a **DOVER** company

LEARN MORE. VISIT US AT opwglobal.com/DSE

State-of-the-Art Innovation that Will Blow Your Mind but Not Your Budget

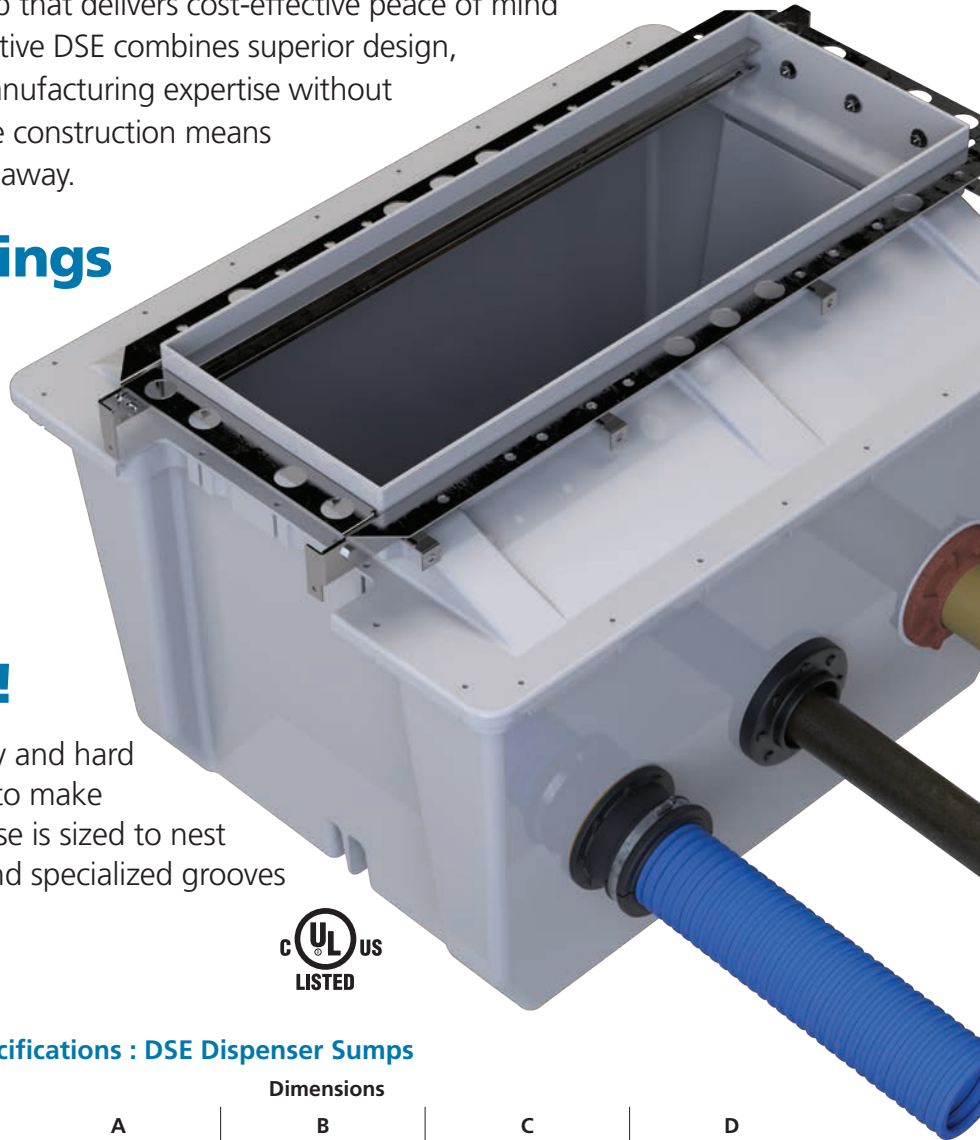
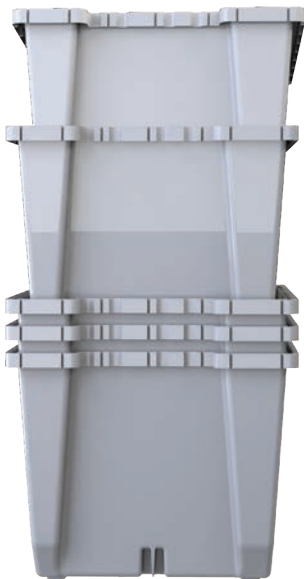
OPW brings you a new dispenser sump that delivers cost-effective peace of mind for retail fueling operators. The innovative DSE combines superior design, premium materials and world-class manufacturing expertise without breaking the bank, and its fast, reliable construction means it's ready to slot into your station right away.

Any Pipe, Any Fittings

DSE Dispenser Sumps fit into your existing dispensing network with ease. The sump base is designed to create strong bonds with fiberglass and flexible pipe and fittings.

Nothing Else Stacks Up... or Unstacks as Easily!

While some dispenser sumps are bulky and hard to store, the DSE is designed to stack to make storage simple. The DSE's universal base is sized to nest perfectly inside itself, while the feet and specialized grooves help it to unstack with ease.



Ordering Specifications : DSE Dispenser Sumps

Sump Model #	Dimensions							
	A		B		C		D	
	in.	cm	in.	cm	in.	cm	in.	cm
DSE-1836	20.22	51.36	17.20	43.69	44.11	112.04	35.90	91.19
DSE-1543	17.18	43.64	14.60	37.084	45.90	116.59	38.90	98.81
DSE-1741	18.50	46.99	16.70	42.42	44.20	112.29	38.10	96.774

Separate Component Part Numbers

Part #	Description
DSE-BASE	Description: DSE Universal Base. Combines with any DSE top
DSE-TOP-1836	Gilbarco Encore Top. Combine with DSE-BASE to make DSE-1836
DSE-TOP-1543	Wayne Ovation Top. Combine with DSE-BASE to make DSE-1543
DSE-TOP-1741	Wayne Helix Top. Combine with DSE-BASE to make DSE-1741



Made With

**ADVANCED
COMPOSITE
TECHNOLOGY**

OPW
RETAIL FUELING

Introducing the TSE Tank Sump

Using the same innovative AdvancedComposite Technology as the DSE, OPW is proud to introduce the TSE Tank Sump!

Innovation in Motion

The industry's first all composite containment system utilizing sheet molded compounds (SMC) to create a high-quality solution that quickly creates cost-effective peace of mind for retail petroleum operators.

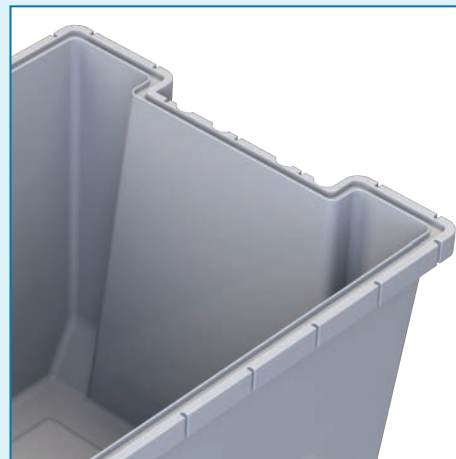
Smooth Sides, Inside and Out

As the only manufacturer in the industry using Advanced Composite Technology, OPW's E-Series are the only fiberglass sumps with smooth walls on the inside and outside of the sump. Smooth sides bond better to prevent leaks and other maintenance needs.

Order Specifications: TSE Tank Sumps

Part Number	Sump Mount Design	Cover Style	Sump Base Diameter	Maximum Sump Height	Minimum Sump Height	Sump Lid Diameter	Minimum Diameter Opening
TSE-4233CR	Collar Ring	Compression	42"	42"	30"	34"	33"
TSE-4233SB	Solid Bottom	Compression	42"	43"	30"	34"	33"
TSE-4233CR-WT	Collar Ring	Locking L Handles	42"	45"	33.5"	34"	29"
TSE-4233SB-WT	Solid Bottom	Locking L Handles	42"	46"	33.5"	34"	29"

ONE OF A KIND



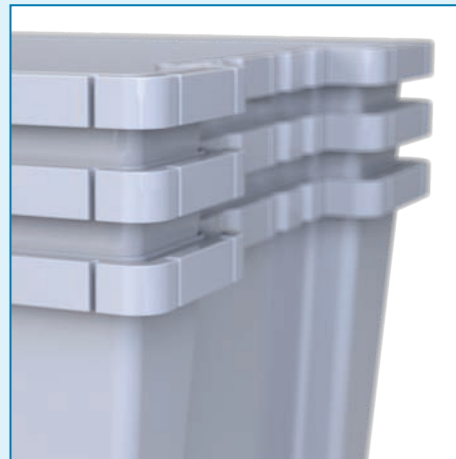
PREMIUM CONSTRUCTION

Advanced Composite Technology results in a robust product that operators can depend on to be high-quality every time.



READY WHEN YOU NEED THEM

Efficient manufacturing creates the industry's shortest lead times and easy installation.



CONSISTENT QUALITY EVERY TIME

Consistent wall thickness, material blend, shape and detail on every sump.

High Quality Composite Performance for the Future of Fueling



The perfect blend of time-tested wisdom, experience, innovation, and technology. No flashiness required, just **OPW Defining What's Next** by blending the best of our past and creating the "Gray" test containment system in the fueling industry.