



DEFINING | WHAT'S NEXT

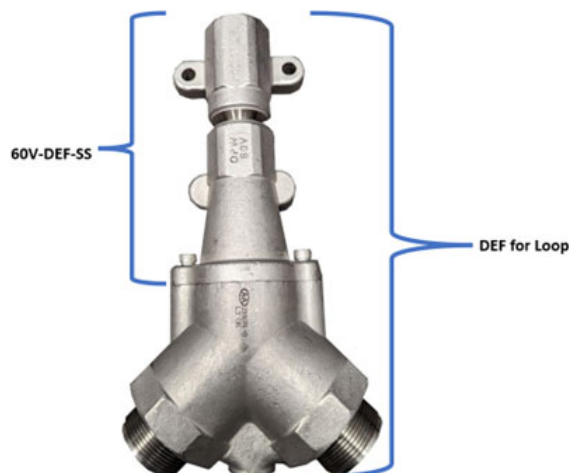
March 10, 2023

OPW DEF Shear Valve

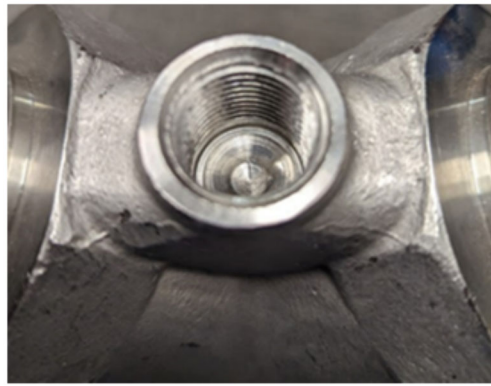
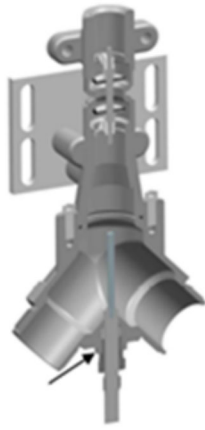
Dear Valued Distributors:

We are very excited to announce the launch of our brand-new Stainless-steel DEF Shear Valve! DEF offerings at retailers' locations continue to cement Diesel Exhaust Fluid's place in our industry. High Flow diesel systems cannot be discussed without DEF coming up in the conversation. To meet this need, we have been refining our DEF-specific offerings to include functional premium containment (in traditional and Loop), heat trace and product piping entry, and now the industry's best DEF shear valve.

The **60V-DEF-SS** will replace its predecessor (the 60V-DEF) with a familiar double-poppeted design but made of full stainless construction. The new valve incorporates a 1.5" NPT connection in the bottom, and a 1" NPT connection on the top; no more thread adapters needed. We have also aligned the DEF shear valve to use the stabilizer bars and mounting plates common across all other OPW shear valve products. Click the link [DEF Shear Valve - YouTube](#) to learn more about this valve, and the applications in which each version is used.



One major feature of the **60V-DEF-SS** is its ability to easily convert to a Loop applicable shear valve. The new DEF-Loop shear valve will allow for the use of either our DPC or SBC pipe couplings, so retailers can choose their preferred method of install. Last, but not least, the recirculation system has gained in popularity as DEF becomes more common on the high throughput diesel forecourt. Our Loop version valve incorporates a drilled and tapped NPT port that is not a through-hole. In one simple drill operation, a recirculation temperature probe can be installed directly into the base of our shear valve.

**Pricing:**

We're delighted to say that we can offer this incredible valve at no additional cost. The current pricing in place for the 60V-DEF and DEF Loop Systems will not change. As always, all options of 1.5" or 2" pipe, DPC or SBC coupling choice, as well as Rubber, Rigid, or Heat trace entry options do not change the price of our Loop System pricing.

Part Number	Description	List Price
60V-DEF-SS	Traditional DEF Shear Valve 1" NPT on top and 1.5" NPT on bottom	\$454.65
DSLRF-DEF-15-1836-15	DEF Loop for Encore, Rigid Entries, Junction, 1.5" pipe with NSPH fittings	\$1,958.22
DSLRF-DEF-15-1535-15	DEF Loop for Ovation, Rigid Entries, Junction, 1.5" pipe with NSPH fittings	\$1,958.22
DSLNG-DEF-15-1836-1	DEF Loop for Encore, w/Heat trace entries, Termination, 1.5" pipe with NPT fittings	\$1,585.58
DSLNG-DEF-15-1535-1	DEF Loop for Ovation, w/Heat trace entries, Termination, 1.5" pipe with NPT fittings	\$1,585.58

We're prepared for the future of DEF fueling and can't wait to provide our partners with the most innovative options in the industry. From tank to nozzle, OPW Retail Fueling now has a complete line of DEF specific equipment.

If you have any questions, please reach out to your OPW District Manager or our Customer Service Department at 1-800-422-2525. As always, we appreciate your support. If you would like more information on our complete product line, please visit our website at www.opwglobal.com. Keep an eye out for more exciting announcements this year as we continue to Define What's Next in 2023!

Regards,

Daniel Boyle
Product Manager
OPW Retail Fueling

OPW Retail Fueling

3250 US Highway 70 Business W • Smithfield, North Carolina, USA 27577 Tel: 1 (800)-422-2525

Copyright ©2009-2017 OPW, A Dover company

[unsubscribe from this list](#) [update subscription preferences](#)

This email is a commercial advertisement sent in compliance with the CAN-SPAM Act of 2003. If you wish to be excluded from future mailings, please use the unsubscribe link at the bottom of this email to let us know.