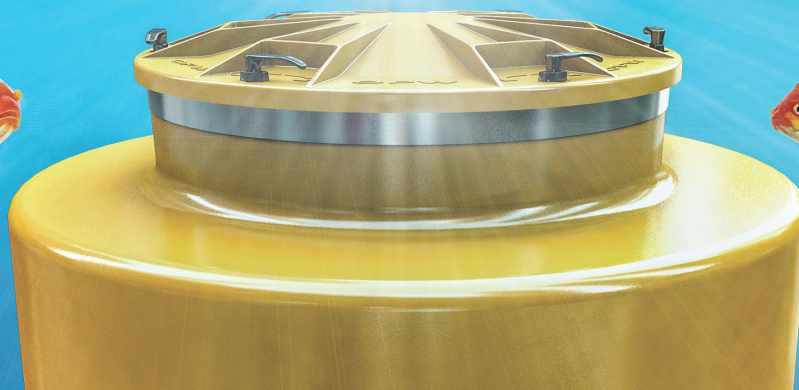
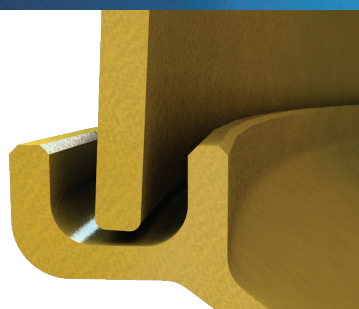


# Watertight Wonder.

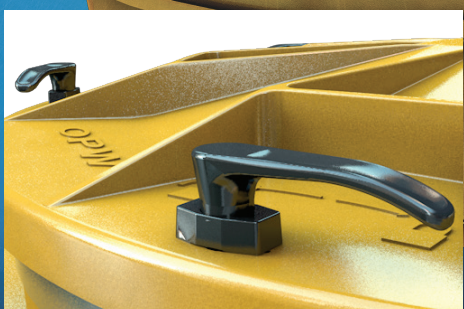


**NEW**

**FibreTITE** TANK  
SUMP



Redesigned inverted U-Channel in base to hold resin for Top Hat (Bonds with RK-5000 Resin Kit)



Ergonomic "L-Handle" Provides Ease of Use and a visual indicator that the handle is in the locked position and the watertight lid is secure.



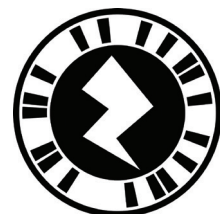
Industry's most consistent wall thickness and only sump with smooth sealing surfaces inside and out for optimum entry fitting watertight integrity.

From the engineering labs of FLEXWORKS and FIBRELITE, OPW has made the best even better. Meet the newest member of the FibreTite Family of sumps, the most watertight sumps on the market today. The new **FibreTite Tank Sump**:

- The only sump manufactured using superior Resin Transfer Molding (RTM) technology. The RTM process utilizes a 2-sided mold to ensure consistent wall thickness and exceptionally smooth wall surfaces inside and out for an ultra-tight entry fitting sealing surface.
- Inverted U-Channel allows for equal resin distribution, creating a superior bond between the base and the top hat to eliminate water intrusion.
- Trimmable top hat design allows for tailored height adjustments
- Stainless steel ring and watertight sealing gasket provide the proven seal-ability of our world renowned Fibrelite sumps
- Available with and without bottom for collar or flange mounting

This is just another example of how OPW is leading the way in containment solutions, and **Defining What's Next**.

To request more information, please contact your OPW District Manager, call OPW Customer Service at 800-422-2525 or visit us at [www.opwglobal.com](http://www.opwglobal.com).



**OPW**   
RETAIL FUELING  
a **DOVER** company

**DEFINING** | WHAT'S NEXT