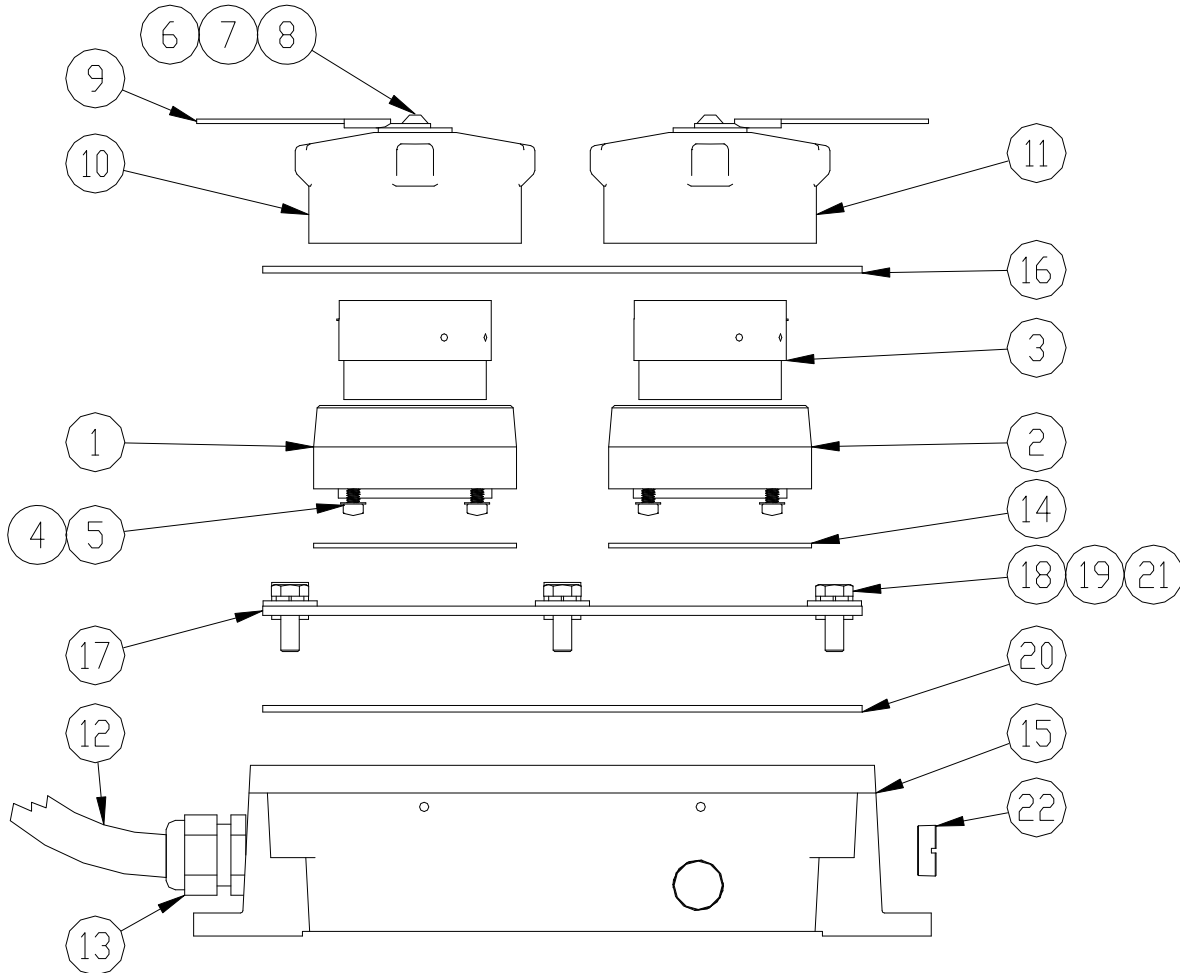




## 4820 Dual Socket



PARTS BREAK DOWN

ITEM	PART NUMBER	DESCRIPTION	QTY.
1	C40151A-3 <sup>2</sup>	"J" SLOT SOCKET - 3	1
2	C40151A-4 <sup>1</sup>	"J" SLOT SOCKET - 4	1
3	C40011M <sup>1,2</sup>	CONTACT BLOCK	2
4	H50073M <sup>1,2</sup>	SCREW, #8-32 3/8"	8
5	H50401M-02 <sup>1,2</sup>	WASHER, #8	8
6	H50290M <sup>3,4</sup>	RIVET	2
7	H50292M <sup>3,4</sup>	WASHER	2
8	H50293M <sup>3,4</sup>	LOGO WASHER	2
9	H50288M <sup>3,4</sup>	CABLE	2
10	H50065M <sup>4</sup>	DUST CAP, GREEN	1
11	H50025M <sup>3</sup>	DUST CAP, BLUE	1
12	97701	CABLE, 7 COND. 20 GA BK	15'
13	H50221M	STRAIN RELIEF	1
14	H52479M <sup>1,2</sup>	GASKET	2

ITEM	PART NUMBER	DESCRIPTION	QTY.
15	D52550M	BASE	1
16	H52551M	LABEL	1
17	H52552M	PLATE	1
18	H50086M	LOCK WASHER, 1/4"	6
19	9485	WASHER, 1/4"	6
20	H52553M	GASKET	1
21	H50114M	SCREW, 1/4-20 3/4"	6
22	H50070M	PIPE PLUG	1

REPAIR KITS	
C40151-THERM	REPL. THERMISTOR FACE PLATE
C40151A-OPTIC	REPL. OPTIC FACE PLATE
4150-4150	DUST CAP, BLUE
4450-4450	DUST CAP, GREEN

1 - Included in C40151-THERM, 2 - Included in C40151A-OPTIC, 3 - Included in 4150-4150, 4 - Included in 4450-4450