

Phoenix® Software For Advanced Management

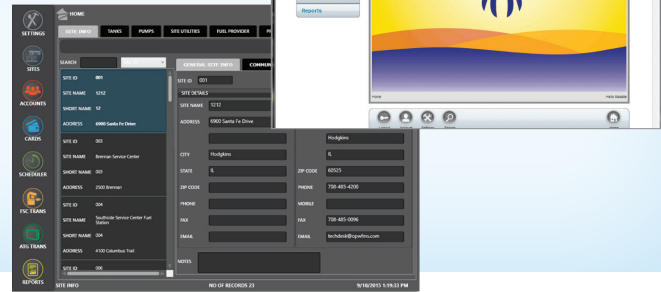
Phoenix SQL® and Phoenix SQL Lite™ are powerful fuel management software packages for your C/OPT™, FIT500™ and K800 Hybrid™ Fuel Control Systems and your Windows®-compatible PC. The software's intuitive user interface lets you easily navigate between site, account, card and transaction screens. Both Phoenix SQL and Phoenix SQL Lite interface directly with OPW's FSC3000™ Fuel Site Controller, OPW tank gauges, most third-party tank gauge systems, as well as most fleet maintenance and back-office software.

Phoenix SQL runs on a server-class network PC and offers complete multi-site polling, card maintenance, reporting and reconciliation. Access the software's intuitive user interface via a web browser, which lets you easily navigate between site, account, card and transaction screens. Phoenix SQL is also designed to retrieve data from multiple TCP/IP-based fuel control systems and tank gauges simultaneously.

Phoenix SQL Lite PC-based software leverages Microsoft SQL Express to deliver comprehensive site reconciliation and powerful data management capabilities from a user-friendly Windows® interface. Phoenix SQL Lite has all of the features of Phoenix SQL, but as a standalone Windows application (as opposed to a web-based application) it is designed for the single-user operations that are common at small and mid-size fuel sites.

Phoenix® Features

Powerful Fuel Management Software Streamlines Data Collection and Reporting



Phoenix SQL® Features

- ◆ Server-based and SQL-enabled – SQL 2008/2012/2014/2016 (Express or Enterprise)
- ◆ Compatible with Windows® 7 32/64 bit, Windows® 8.1 32/64 bit, Windows® 10 32/64 bit, Windows® Server 2008 RC2, Windows® Server 2012, Windows® Server 2012 RC2
- ◆ Provides simultaneous multi-user access and security features
- ◆ Centralized card database for multiple sites
- ◆ Provides communications through modem, Ethernet or direct connection
- ◆ Intuitive browser-based interface allows users to easily navigate between site, account, card and transaction screens
- ◆ Browser enabled; supported browsers include Internet Explorer 9, 10 and 11; Google Chrome version 45.0.2454.99 m or higher; Mozilla Firefox 41.0 or higher

Phoenix SQL Lite™ Features

- ◆ PC-based software leverages Microsoft SQL Express to deliver powerful data management capabilities from a user-friendly Windows® interface
- ◆ Phoenix SQL Lite has all of the features of Phoenix SQL, but as a standalone application it is designed for single-workstation operations
- ◆ Compatible with Windows® 7 32/64 bit, Windows® 8.1 32/64 bit and Windows® 10 32/64 bit, software easily installs on a PC
- ◆ "Help" features guides users through common programming tasks
- ◆ Custom import/export features enhance card data management

Try Phoenix SQL Lite for Free

Sign Up for a 60-Day Free Trial at

www.opwglobal.com/PhoenixTrial

Hardware Requirements

Phoenix SQL®:

- Runs on multiple Microsoft operating systems (Windows® 7, Windows® 8.1, Windows® 10, Windows® Server 2008 RC2, Windows® Server 2012, Windows® Server 2012 RC2)
- Windows® PC or Server with Quad Core, 2.4 GHz or faster processor
- At least 8 GB of RAM, DVD-ROM drive, 120 GB hard disk space
- 10/100/1000 LAN connection, Internet access for activating software, and serial port if direct connect or modem feature is used
- Internet Information Services (IIS) 7.5 or higher

Phoenix SQL Lite™:

- A Windows® PC with 2 GHz or higher processor speed running Windows® 7 32/64 bit, Windows® 8.1 32/64 bit or Windows® 10 32/64 bit; 120 GB hard disk space; 1024 x 768 display

OPW Phoenix® Reconciliation Report

OPW's Phoenix SQL® and Phoenix SQL Lite™ Fuel Management Software have the ability to account for any fuel dispensed while a fuel delivery is in progress. For example, if a fuel delivery of 1,000 gallons is taking place and Phoenix SQL software senses 300 gallons are simultaneously being dispensed, the Phoenix Reconciliation Report will account for this sale and clearly show the calculated fuel delivery was, in fact, 1,000 gallons.

Data Management and Reporting, Streamlined and Simplified

Export Data in Many Formats

Date	Time	Tank #	Site	Volume	Amount	Prod	Price	Mag	Other	Dist	Max Retail	Price	Qty	Amount
11/22/18	12:11	1001	0001	1000.00	1000.00	0.00	1.00	11111	0	0	\$1.00	1.00	1000	\$1000.00
11/22/18	12:12	1001	0001	300.00	300.00	0.00	1.00	11111	0	0	\$1.00	1.00	300	\$300.00
11/22/18	12:13	1001	0001	700.00	700.00	0.00	1.00	11111	0	0	\$1.00	1.00	700	\$700.00



Complete Reports Package



Site Reports



Transactions Reports



Account Reports



Product Reports



Card Reports



Support Tables Reports

NOTE: See OPW Fuel Management Systems' website at www.opwglobal.com for detailed product literature, manuals and sales representative contact information for your area.