

## Phoenix SQL Lite™ Installation and Start-up

This instruction is a guide for the Phoenix SQL Lite installation process.

### Component Considerations

Before you do the actual software installation, you must make a decision on where the Phoenix **database** will be located. Install the free version of Microsoft's SQL Server Express 2014 (supplied on the Phoenix installation CD), or point Phoenix to an installed version of Microsoft's SQL Server (Standard or Enterprise versions 2005/2008/2012/2014) on your company network.

Make a decision on a location to install the Phoenix SQL Lite **software**. This software must have direct access to the SQL Server for database management and have connection-point access to each fuel site controller that will be managed. This can be done through a serial COM port for direct connections, a modem for dial-up access, or TCP/IP connectivity using your company LAN.



**NOTE:** To avoid security issues, the use of public internet to access fuel site controllers is not recommended.

### Note for Current Phoenix for Windows Users:

After Phoenix SQL Lite is installed, there is a database migration utility that will import Phoenix for Windows data if applicable. When the migration is complete, some changes might have to be made to the imported data for **Accounts** and related **Cards**. To access the instructions for the Migration Utility, click **Settings** in the Main Menu bar, select the **Migration** tab and push the **F1** function key on your keyboard. This will bring up the **Migration** topic of the Phoenix SQL Lite Help file.

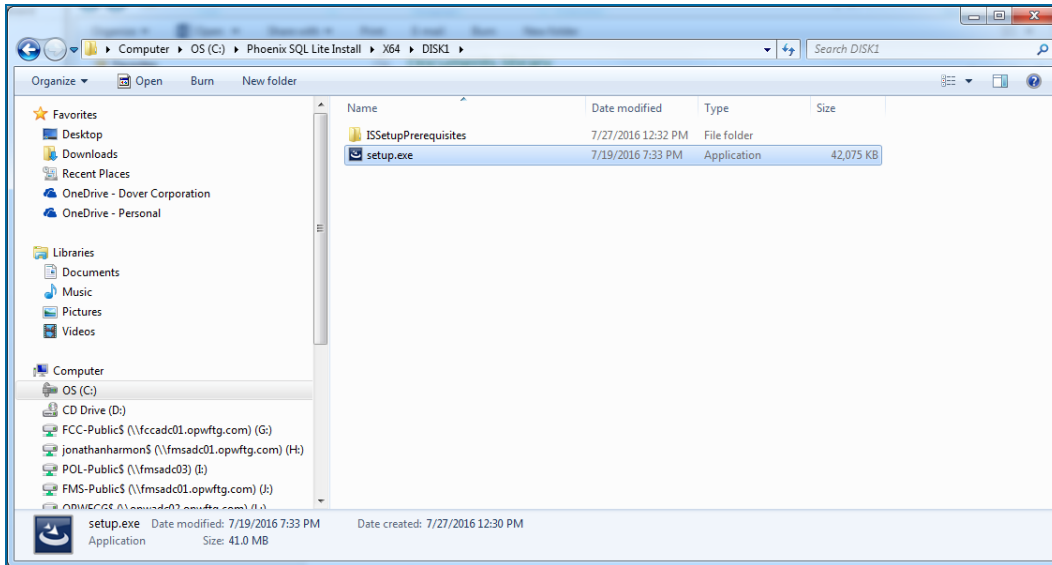
### Phoenix SQL Lite Installation

Follow the steps below to install Phoenix SQL Lite on your machine:

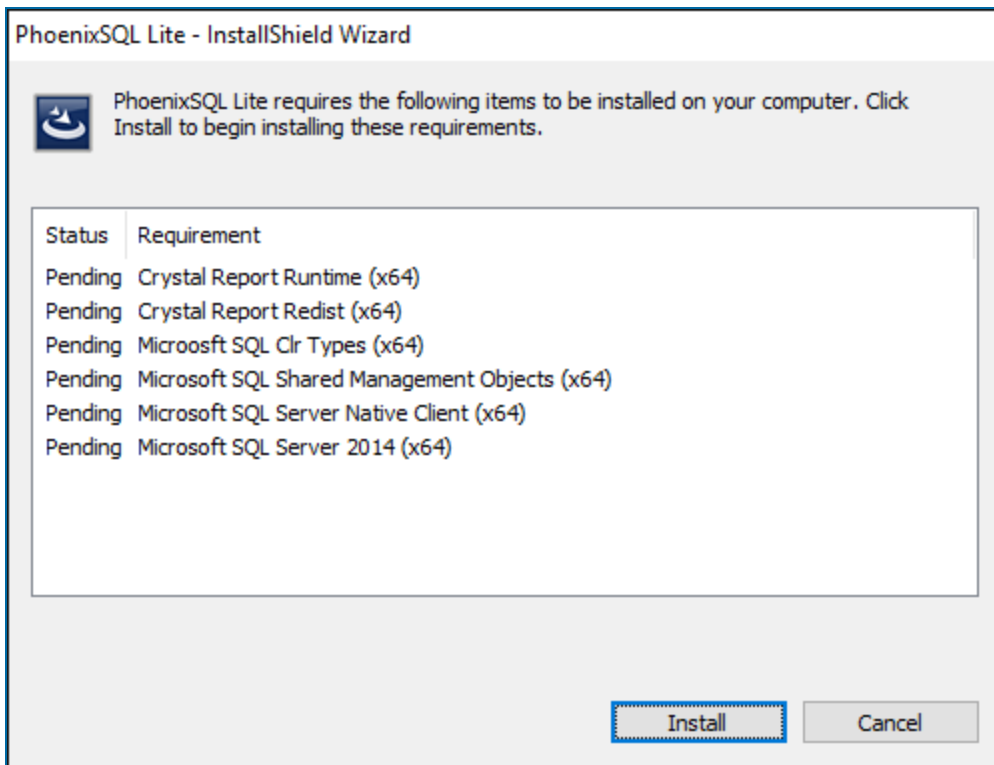
1. Download the Phoenix SQL Lite installation folder.



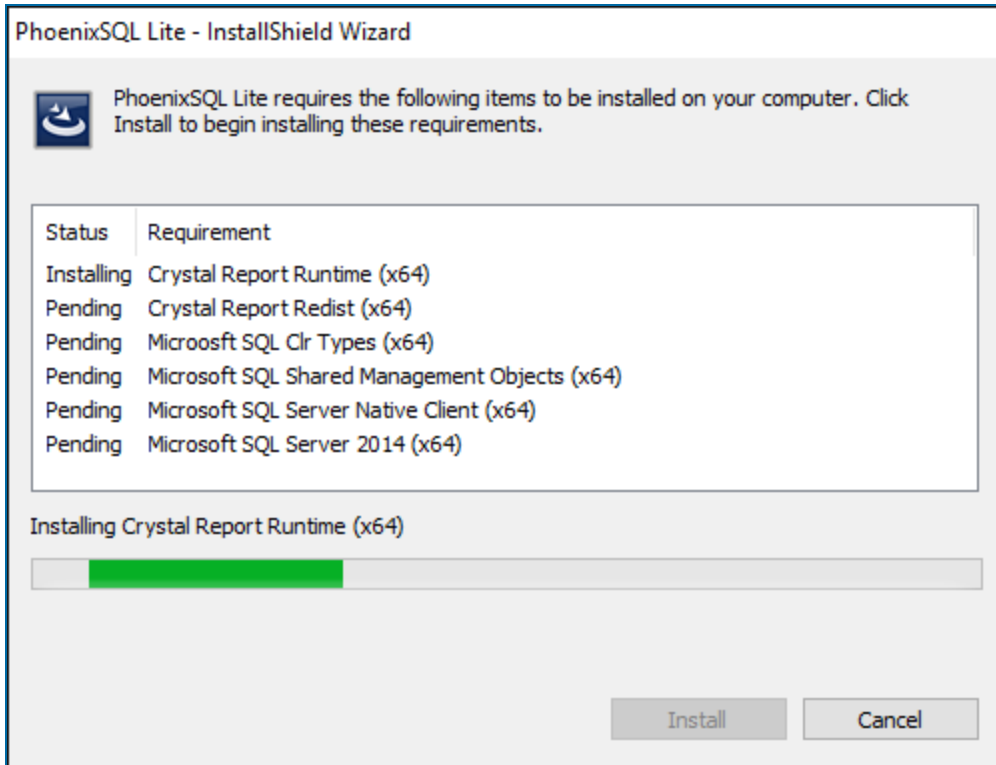
**IMPORTANT:** After you download the software you must extract the installation files to your PC's root directory (C:\). Run the files from this location **ONLY**. Do not try to run the files from the Downloads folder, Desktop or other locations (this could cause the file paths to be longer than the character limits permitted in Windows).



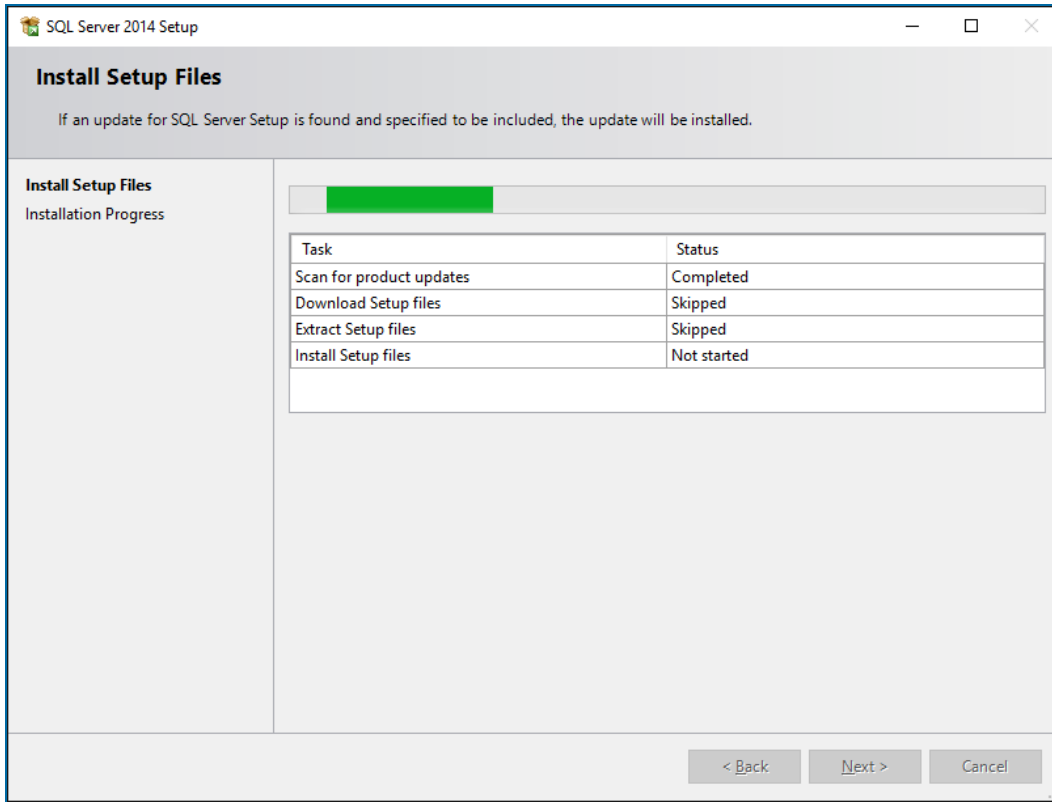
2. Locate the setup.exe in the Phoenix SQL Lite installation folder and run this as administrator. The InstallShield Wizard screen will come into view.



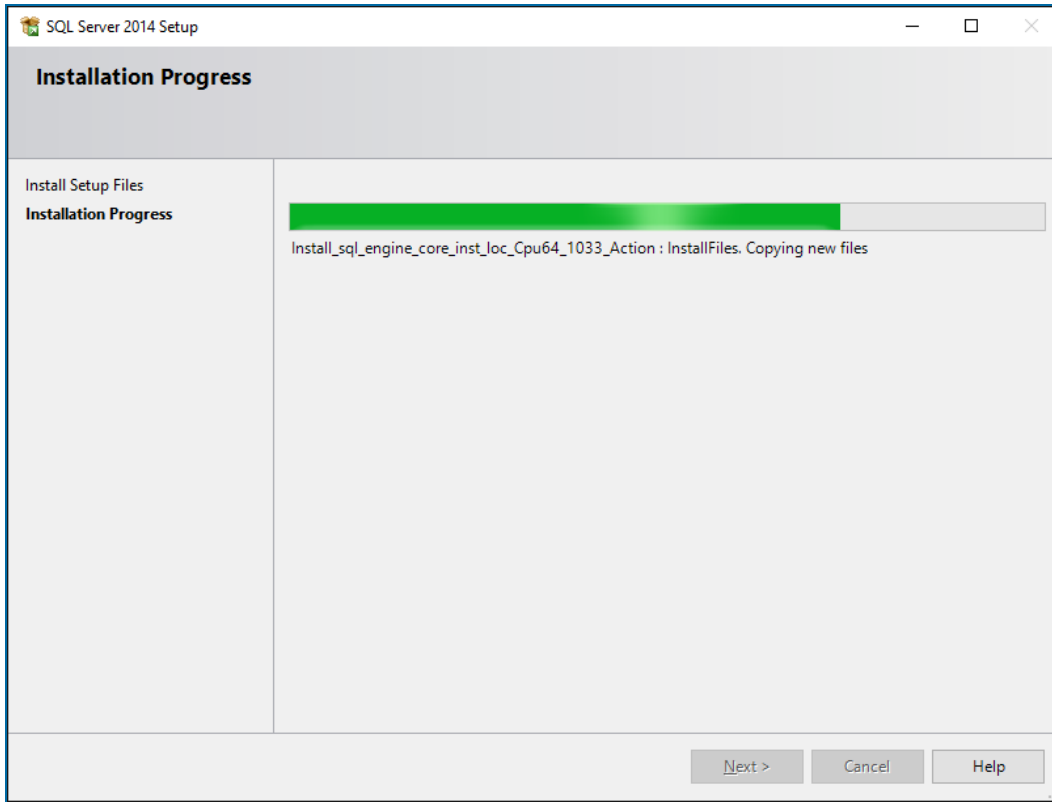
3. A Phoenix SQL Lite Prerequisite window will come into view. Click **Install**. Phoenix SQL Lite will install the prerequisites it needs



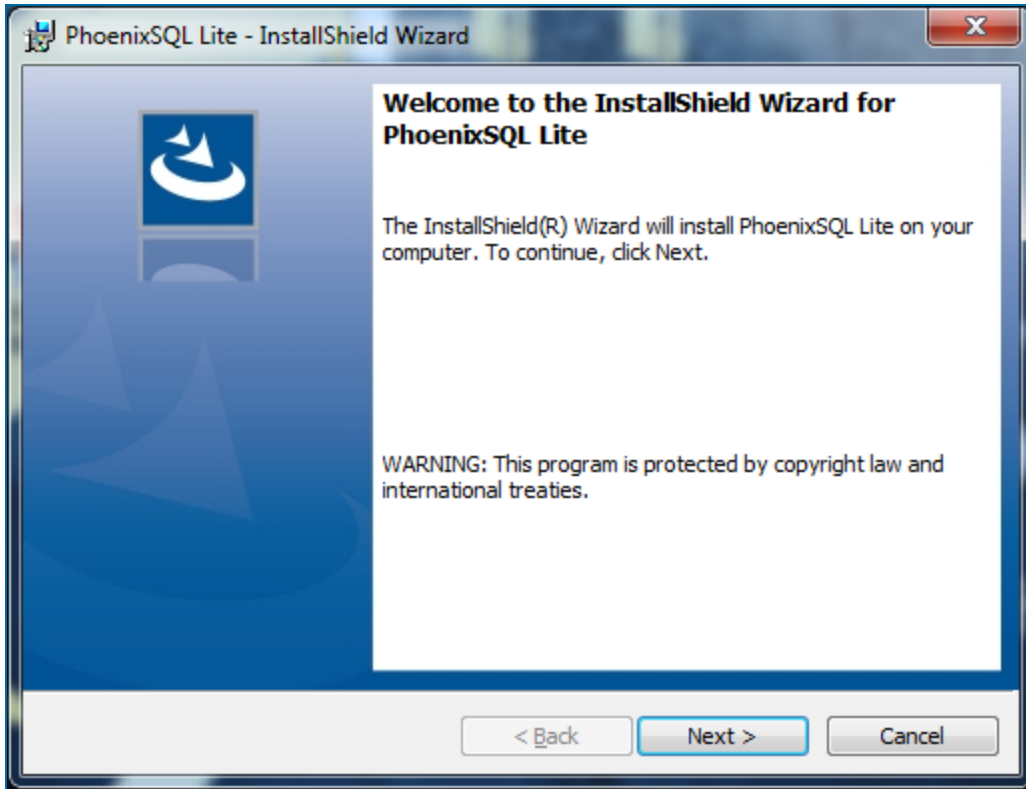
4. Wait for the files to be fully installed.



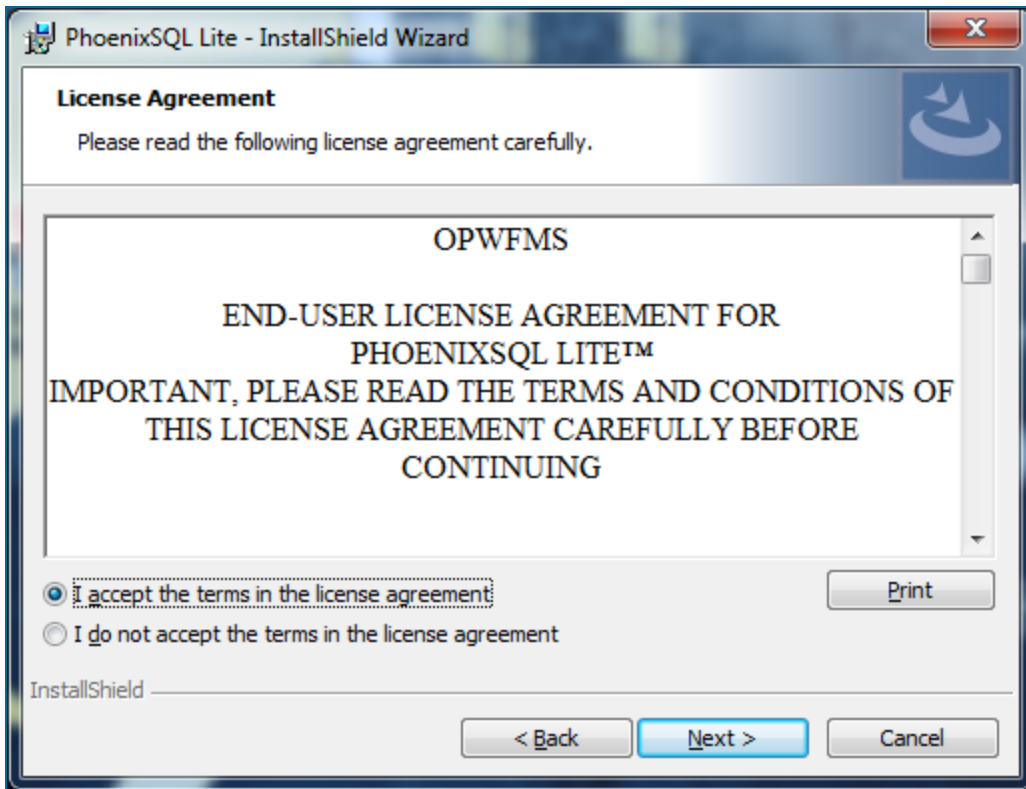
5. When the prerequisite file installation is completed, the SQL Server Express 2014 installation will start. Please wait for this to be completed



6. When the SQL Server Express 2014 installation is completed the Next button will turn on.



7. Click **Next** to bring up the License Agreement for Phoenix SQL Lite.



8. Read the agreement and select the radio button next to **I accept the terms in the license agreement**. Click **Next** to bring up the Customer Information section.

PhoenixSQL Lite - InstallShield Wizard

**Customer Information**

Please enter your information.

User Name:  
JohnDoe

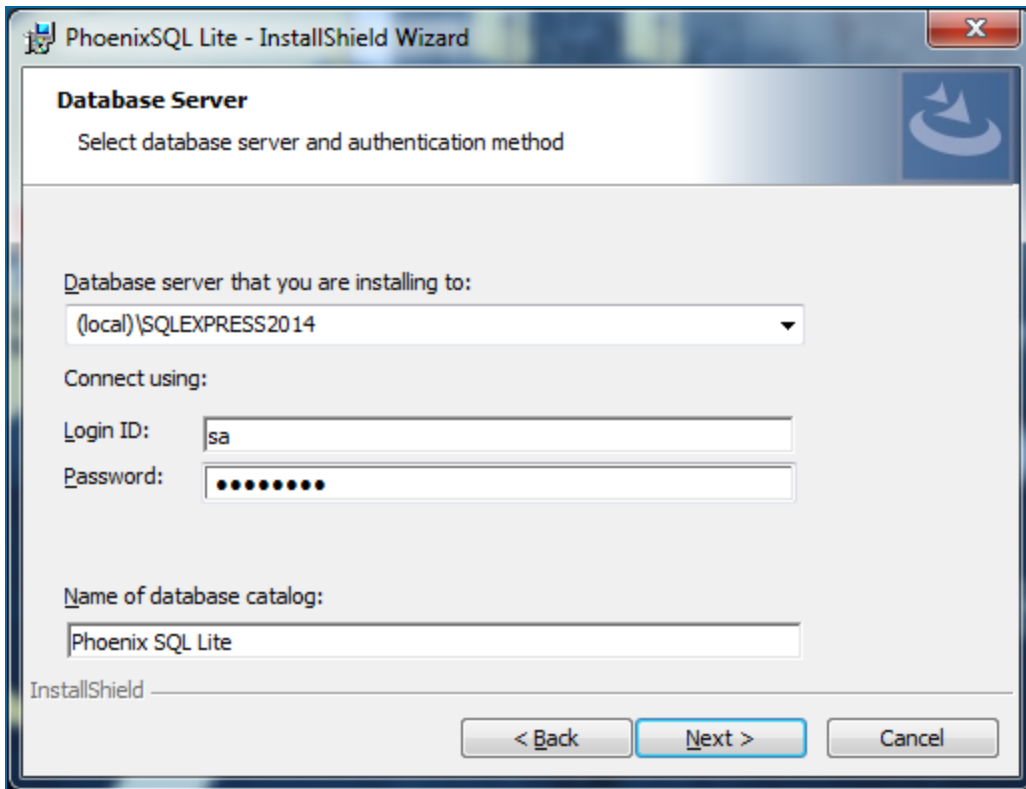
Organization:  
FMS

InstallShield

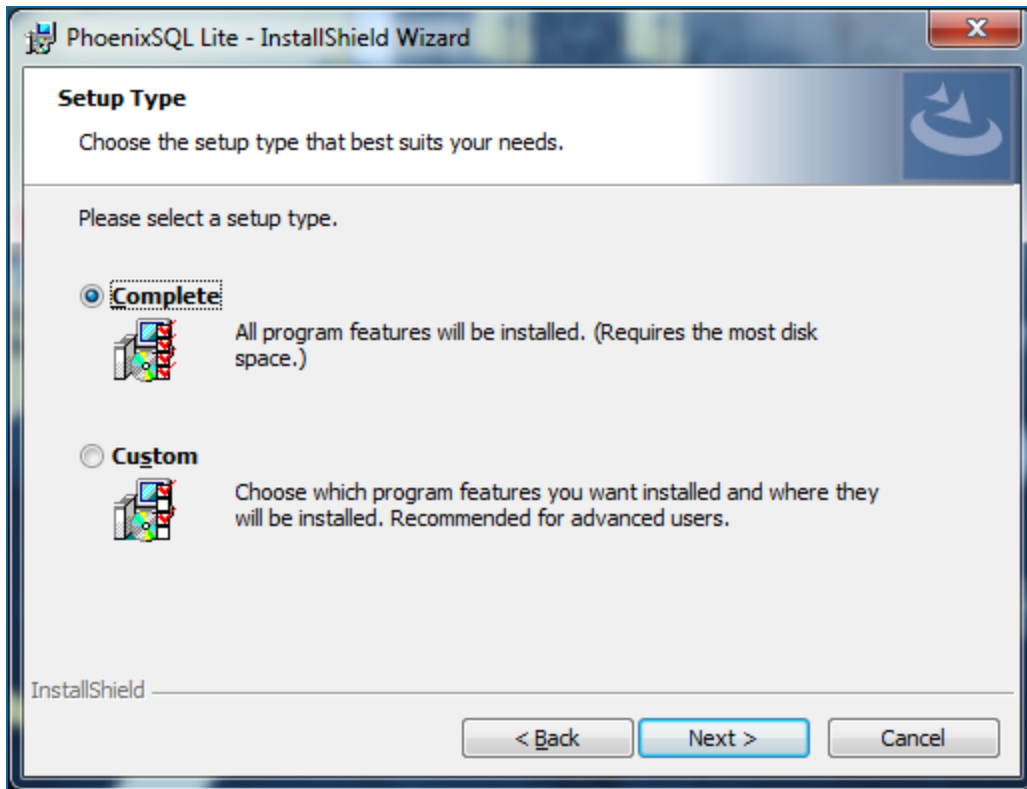
< Back   Next >   Cancel

9. Enter the **User Name** of the Windows user and an **Organization** name if applicable. Click **Next** to bring up the Database Server selection.

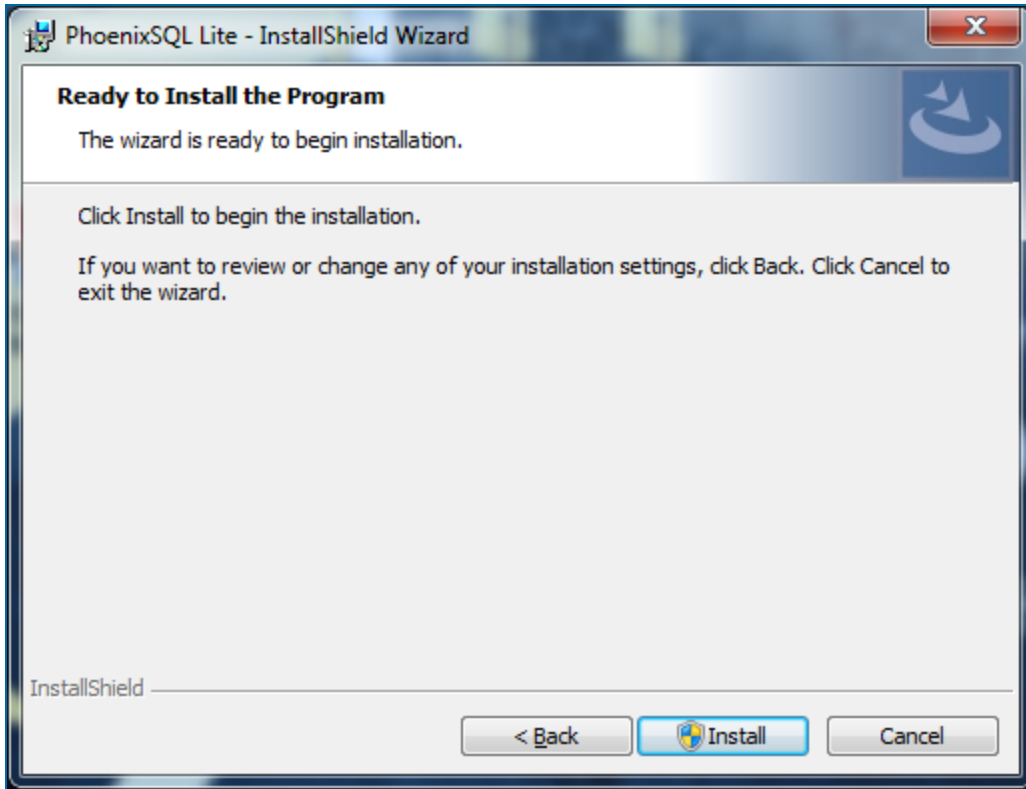




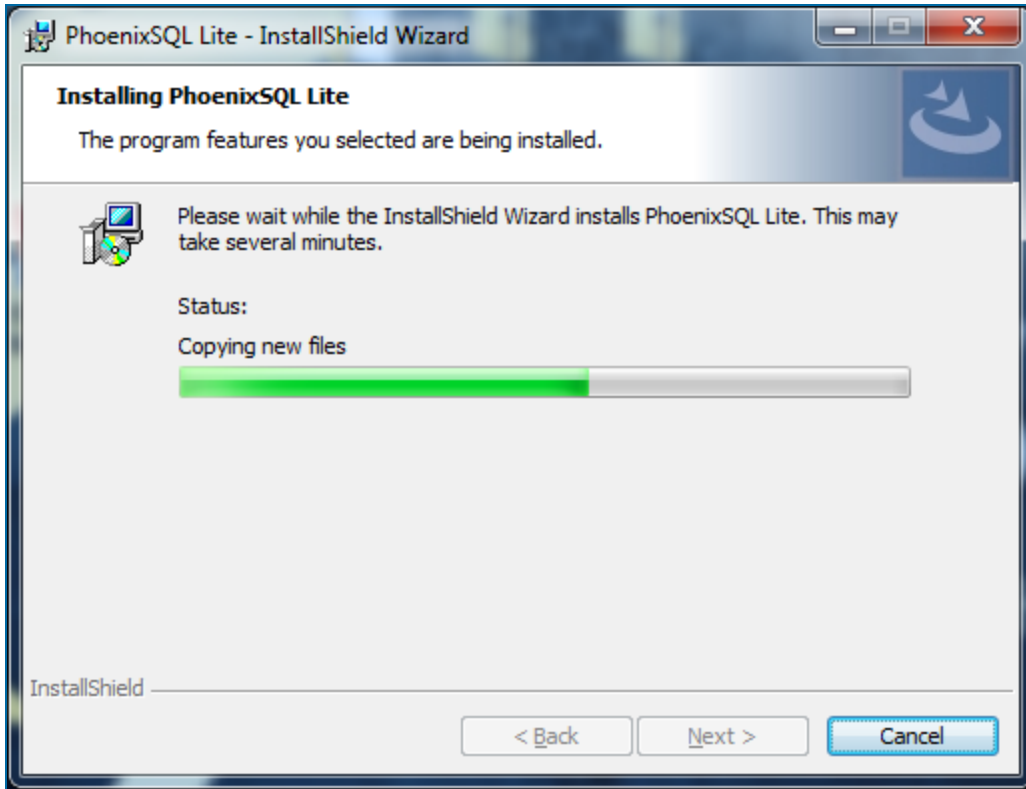
10. Select the applicable **Database Server** name from the dropdown list. Under **Connect using**, enter the applicable **Login ID** and **Password** (supply the administrator credentials that give rights to set up a Database). If you select the SQL Server Express Edition 2014 that was installed with Phoenix SQL Lite, the Login ID is **sa** and the password will be **OPWfms#6900**. Click **Next** to bring up the Setup Type selection.



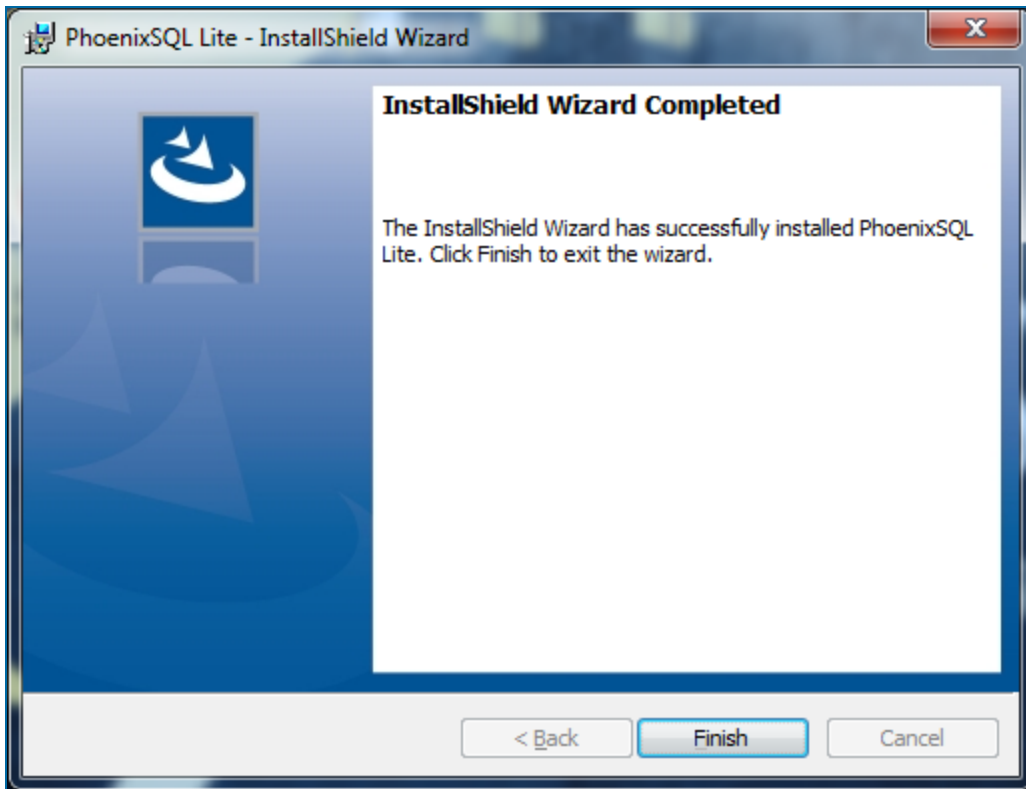
11. Select an **Installation Type** option:
  - a. **Typical:** (Recommended) This is the default Installation Type.
  - b. **Custom:** (For advanced users) Click **Next**. Enter the Website Name/Virtual Directory Name and determine the Destination Path using the Browser button on the right.
12. Click **Next** to bring up the Ready to Install the Program section.



13. Click **Install**. The Phoenix SQL Lite install setup will auto-run.



14. The **Status** of the installation will show with a progress bar. When the installation is done the InstallShield Wizard Completed screen will come into view.



15. Click **Finish** to complete the Phoenix SQL Lite Installation.

## License Activation

When Phoenix SQL Lite is installed, it will open as a DEMO that gives you a 60-day, two-site configurable version.

When it is purchased, Phoenix SQL Lite can be Activated for use.

To activate your purchased version, select **Settings** in the Main Menu bar, select the **Configuration** tab and push the **F1** function key on your keyboard. This will bring up the **Configuration** topic of the Phoenix SQL Lite Help file. Scroll down to License Activation and follow the instructions given.

## Phoenix SQL Migration Utility

Before you can continue with the Migration Utility procedure, you must log-in to Phoenix SQL Lite and activate the purchased serial number (see License Activation above). Without a purchased copy of Phoenix SQL Lite, it is not possible to migrate a current Phoenix for Windows database.

To access the instructions for the Migration Utility, select **Settings** in the Main Menu bar, select the **Migration** tab and push the **F1** function key on your keyboard. This will bring up the **Migration** topic of the Phoenix SQL Lite Help file.