



Leading The Way in Fueling Innovation Worldwide

FIT500 ADA-Compliant Pedestal Door Installation

Procedure Guide

www.opwglobal.com

ONE COMPANY. ONE WORLD. ONE SOURCE.™

Central Technical Support Number: 1-877-OPW-TECH (877-679-8324)
Calls outside US and Canada: 1-708-485-4200 **Fax:** 1 (800) 421-3297
Hours: Monday through Friday, 7:00 am to 6:00 pm, US CST

Document Number: M00-52-2012, Rev. 0
Issue Date: July 25, 2013
Supersedes: N/A



1 Introduction

This document outlines the proper installation instructions for the optional ADA-compliant pedestal for the FIT500 Fuel Control System from OPW Fuel Management Systems. The pedestal door option retrofits the existing FIT500 pedestal; thereby, allowing the FIT500 terminal to adhere to current ADA standards. This ADA-compliant pedestal option allows for a second card reader and function keyboard to be installed in the pedestal of the FIT500 terminal. This ADA-compliant pedestal option is not available with the receipt printer option.

The FIT500 system (with the ADA-compliant pedestal installed) will accept a card insertion from either of the two installed card readers when it is in the "Insert Card" mode. And when the system is expecting a function key entry, it will accept an entry from either function keyboard.

1.1 Prior to Installation

Prior to the installation of the ADA-compliant pedestal door option, first complete the installation and testing of the standard FIT500 system.

Turn "off" the circuit breaker that is providing power to the FIT500 and remove the FIT500 pedestal door.



2 Installation Procedure

2.1 Secondary Card Reader

Once the FIT500 pedestal door has been removed, the secondary card reader is to be installed in the pedestal door. Please see Figure 2-1 for visual reference during the installation process.

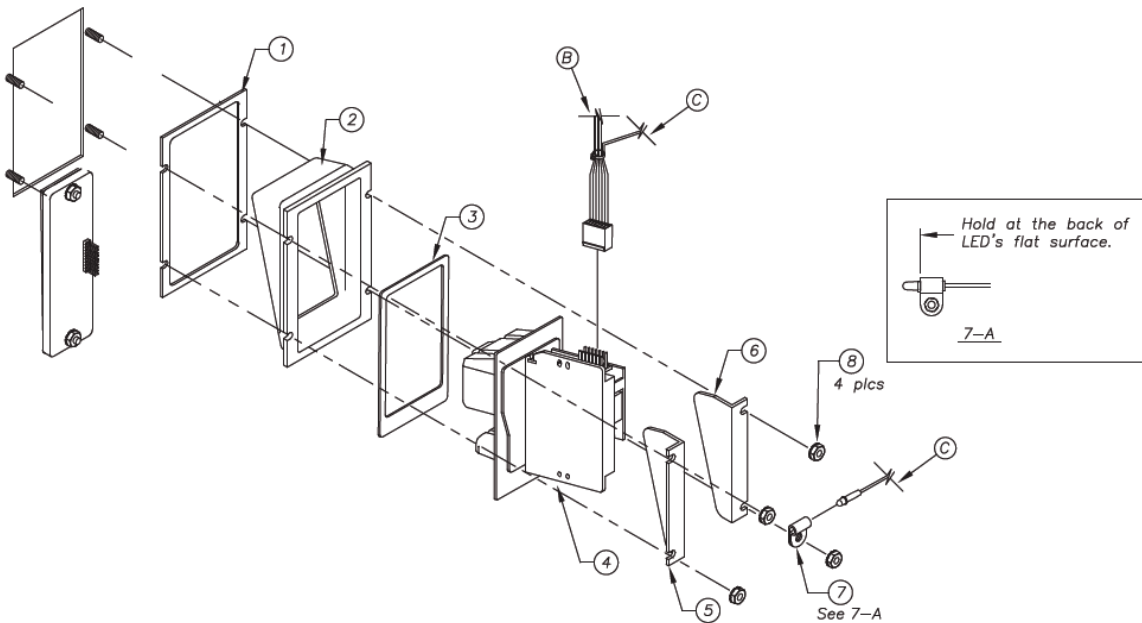


Figure 2-1 Secondary Card-Reader Assembly

1. Begin by placing the following components onto the four (4) mounting studs on the pedestal door, in the order in which they are listed.
 - a. Bezel gasket (item 1)
 - b. Bezel (item 2)
 - c. Card reader gasket (item 3)
 - d. Card reader (item 4)
2. Secure the card reader with the supplied reader holding brackets (items 5 and 6) using 6-32 KEP nuts. Use two (2) 6-32 KEP nuts to secure the first card-reader holding bracket (item 5) to the pedestal, as shown in Figure 2-1. Next, secure only the top of the opposite card-reader holding bracket (item 6) to the pedestal, using one (1) 6-32 KEP nut, as shown in Figure 2-1.
3. Secure the 20-1642-032 reader cable LED with the provided clamp (item 16). Use one (1) 6-32 KEP nut on the bottom stud of the card-reader holding bracket (item 6). Ensure that the LED above the stud is facing the reader.
4. Connect the 7-pin connecting cable to the mag reader. Then, connect the long end of the keypad cable (part #20-1603-059) to the function keypad on the pedestal door. Secure the cable with the existing cable clamp on the pedestal door.
5. Proceed by routing both the magnetic card reader and keypad cables through the pedestal and into the FIT500.

6. Next, attach the pedestal door to the FIT500 pedestal ensuring not to pinch the cables.
7. Re-install the FIT500 door on the pedestal.

2.2 Dual-Reader Interface Board

Once the secondary card reader is properly installed in the pedestal, install the Dual-Reader Interface inside the FIT500. Please see Figure 2-2 for visual reference during the installation process.

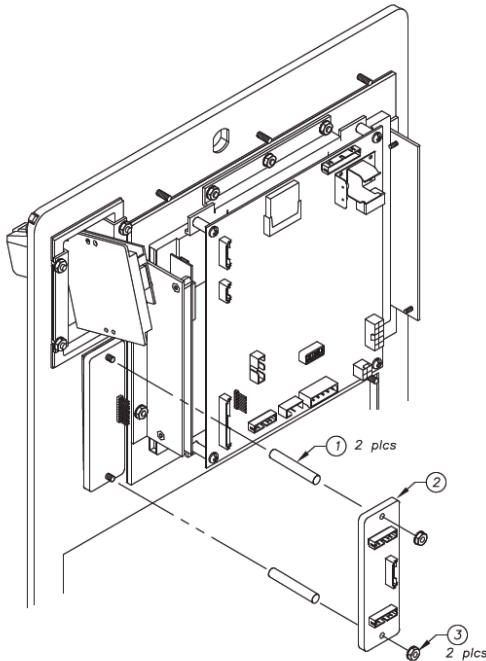


Figure 2-2 Dual-Reader Interface Board Assembly

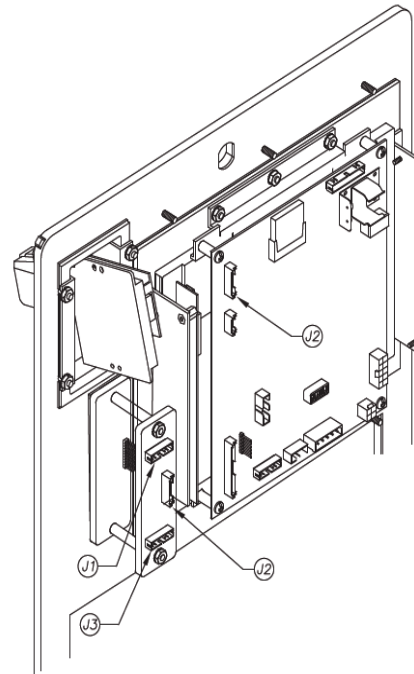


Figure 2-3 Cable Routing

1. To begin, remove the two (2) 8-32 KEP nuts that are securing the main function keyboard. Screw two (2) standoffs (8-32 x 1.5") on the studs to secure the main function keyboard. Next, attach the Dual-Reader Interface board to the standoffs using the previously removed nuts.
2. Connect the card reader cables, as illustrated in Figure 2-3. First, disconnect the existing main card reader cable from the FIT500 control board (connector J2) and plug it into the Dual-Reader Interface board (connector J1). Then, connect the Dual Reader Interface board cable from the FIT500 control board (connector J2) to the Dual-Reader Interface board (connector J2).
3. Plug the long card reader cable (from the secondary card reader) into the Dual-Reader Interface board (connector J3).
4. Connect the ADA-compliant keyboard harness (from the secondary function keyboard) in the same matter as the original harness was connected.
5. Install the cable clamp (supplied) to the bottom shelf inside of the FIT500 enclosure so that the magnetic card reader and keypad cables will run directly to their respective connectors on the Dual-Reader Interface board when secured. Secure the cables to the clamp.
6. Turn the circuit breaker "on" and check the FIT500 system for proper dual card-reader and function keyboard operation.