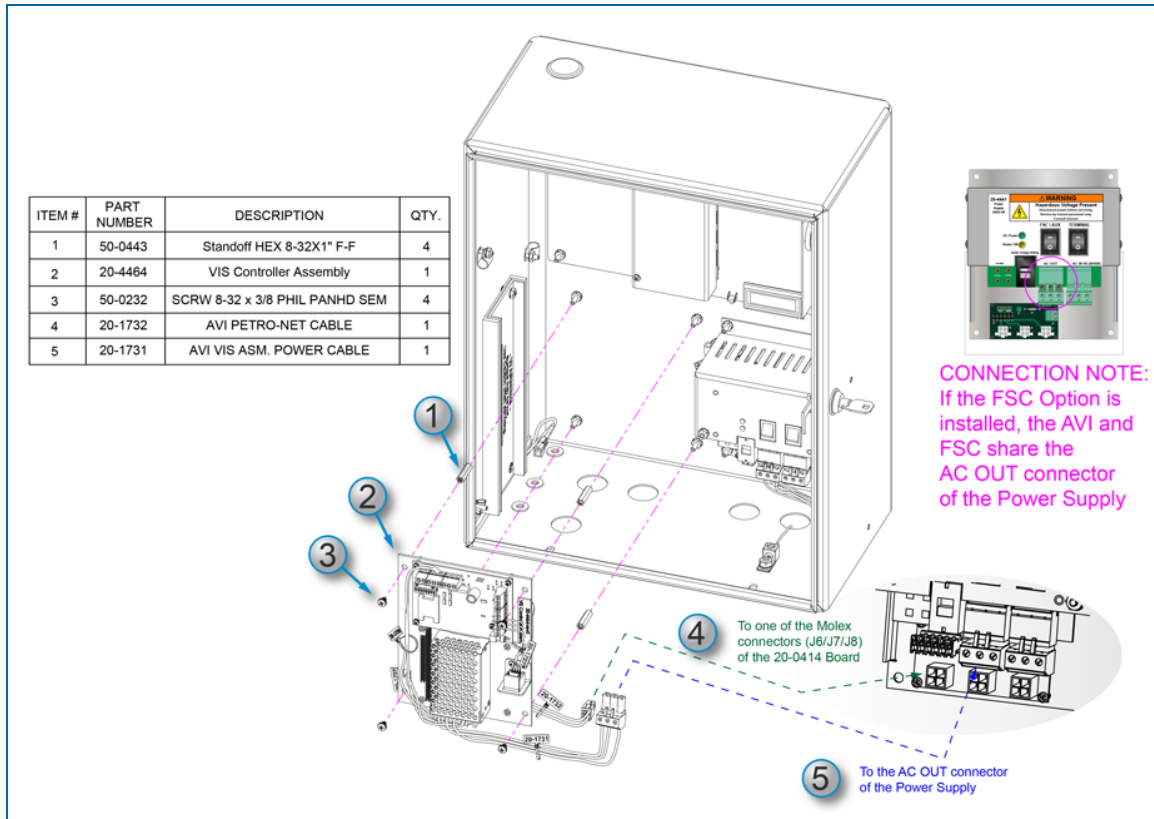


AVI - PV200 Option Installation

FMS Part Number 20-4465

Install the VIS Controller Assembly

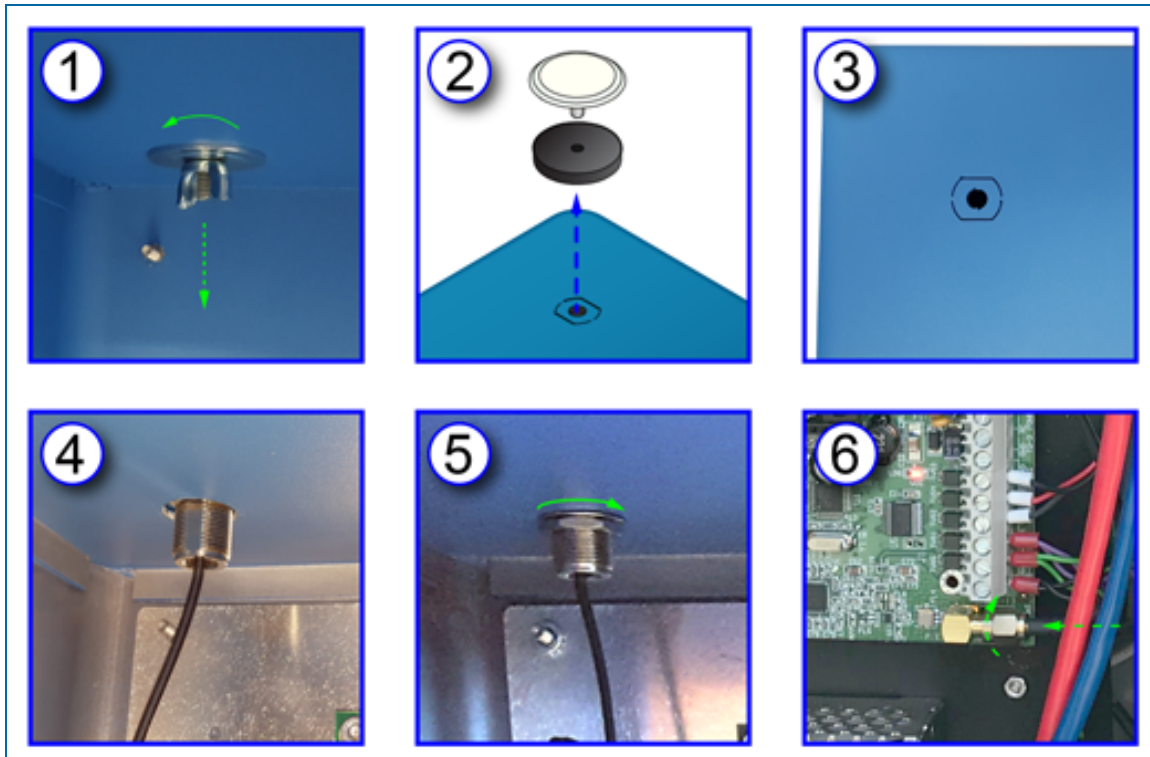


1. Remove the nuts from the studs on the back wall of the PV200 enclosure where the VIS Controller Assembly is to be installed. Attach the four (4) standoffs (50-0443) to the studs.
2. Hold the VIS Controller Assembly (20-4464) on the standoffs as shown above.
3. Put the four (4) screws through the holes in the VIS assembly and attach them to the standoffs.
4. Connect the 20-1732 AVI Petro-Net Cable to one of the three Molex connectors (J6/J7/J8) of the Petro-Net Power Hub Board (20-0414)
5. Connect the 20-1731 AVI VIS Power Cable to the AC OUT connector of the Power Supply.



NOTE: If the FSC Option is installed, the AVI and FSC share the AC OUT connector of the Power Supply.

Install the Antenna



To install the 6" antenna to the enclosure for wireless operation:

1. Loosen and remove the hole plug wing-nut and washer from the inside of the enclosure.
2. Remove the hole plug assembly from the knockout on the top of the enclosure.
3. Carefully punch out the knockout.



IMPORTANT: Make sure the knockout is punched out clean and that the top of the enclosure around the hole does not get bent.

4. Put the bulkhead connector and cable of the antenna assembly through the hole.



NOTE: If the connector does not go through the hole easily, use a file to increase the dimension of the hole sufficient for clearance. Be sure to clean the filings from the bottom of the enclosure.

5. Put the washer and nut of the antenna assembly on the threaded bulkhead connector. Turn the nut clockwise until it is tight.
6. Attach the coaxial cable connector of the antenna to the antenna connector of the VIS.