

FIT500 Drilled Shroud Installation

Warning: The FIT500 must be clean and dry, with a minimum outside temperature of 50 degrees F. For Proper Installation

- DISCONNECT POWER TO THE FIT.
- Observe ESD (Electrostatic Discharge) precautions at all times.
- Observe proper hazardous location safety precautions at all times.
- Read and understand this document thoroughly before beginning installation!

Removal/Installation Instructions

- Using the door key, open and remove the FIT500 door from the enclosure, store in a safe place.
- Remove the door shroud by using a small flat scraper use care to avoid damage to the FIT500 stainless steel finish.
- Clean the shroud area of remaining glue with the small flat scraper. **Figure 1.**

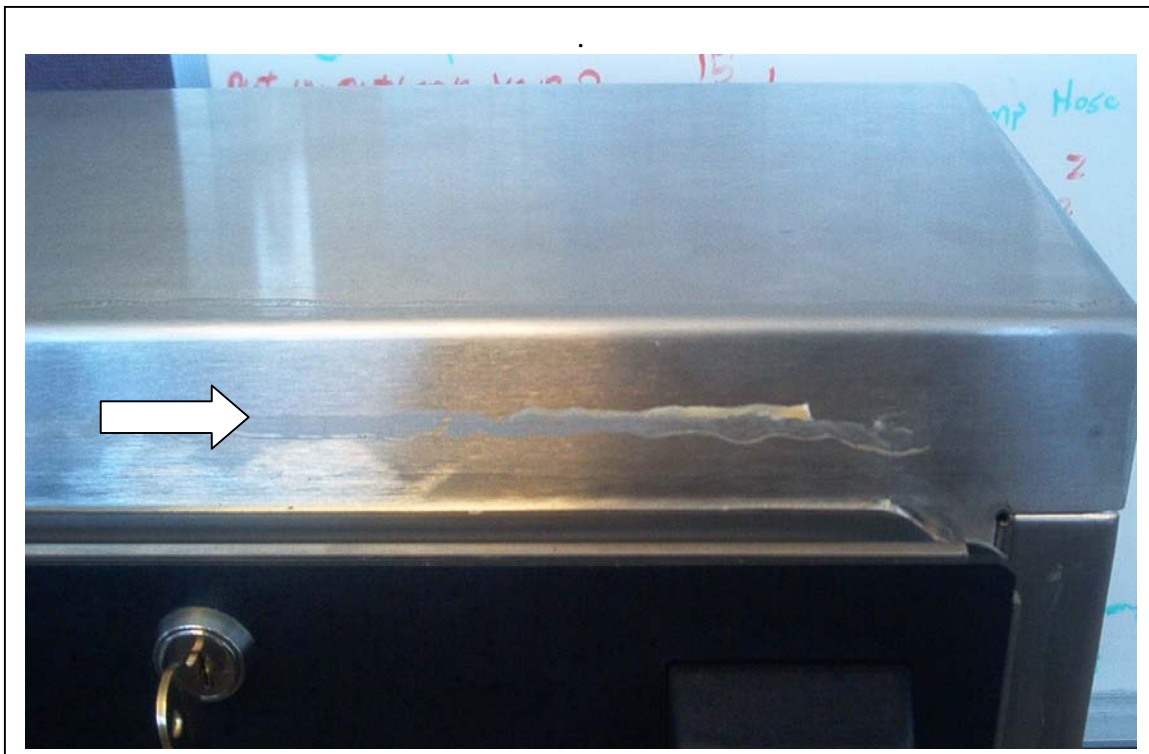


Figure 1. Clean Old Adhesive

FIT500 Drilled Shroud Installation

Drilling The Enclosure

- Use the drilled shroud to locate the holes to be drilled in the enclosure. **Figure 2.**
- Install the shroud on the cleaned enclosure and mark the (6) holes.
- Remove the shroud and center punch the marked areas, and drill with the (3/16) cobalt drill bit supplied.
- Clean the area of all metal chips, and wipe with a solvent like alcohol.

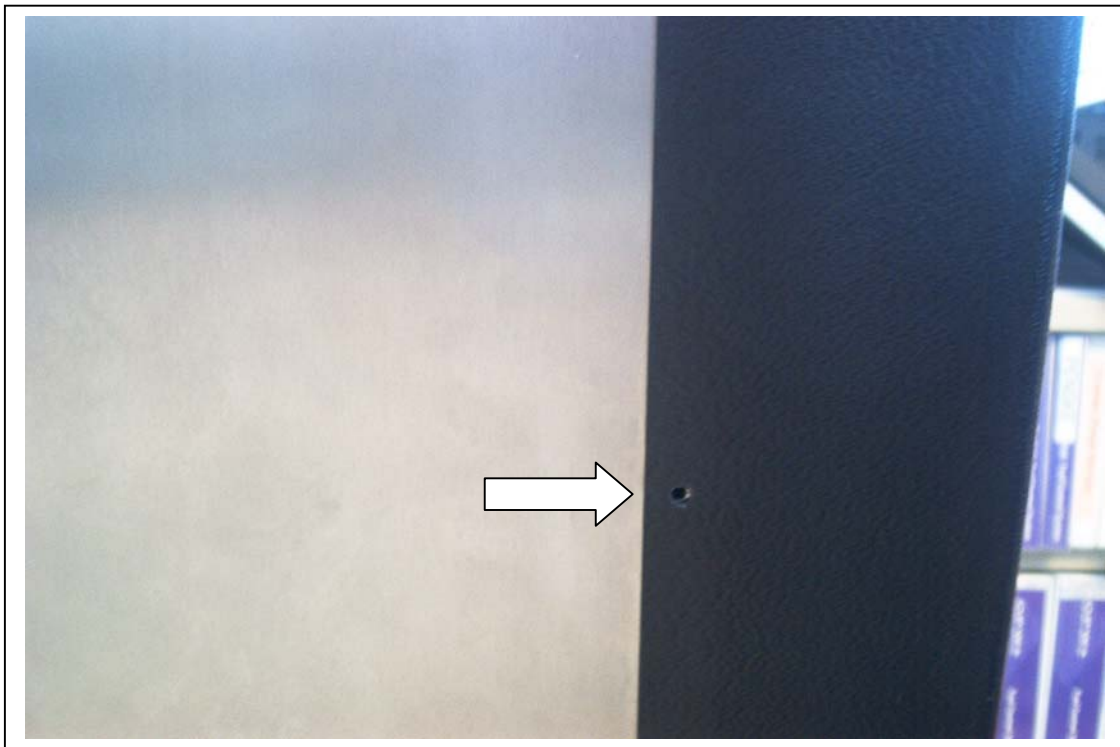


Figure 2. Locate Holes

FIT500 Drilled Shroud Installation

To Install The Shroud

- Remove the orange backing tape from the 3M adhesive strips. **Figure 3.**
- Install the Shroud on the enclosure carefully aligning the holes.
- Install the (6) screws and nuts supplied, press the shroud firmly in place.
- Install the door and return the FIT500 to service, test unit for proper operation.



Figure 3. Remove Backing From 3M Tape