

FMM20-4270-02 FSC3000 Modem Installation



DANGER: To prevent the risk of electrical shock, disconnect the power cable from the unit before you proceed with these instructions.



NOTICE: Back up all of your site and card file data before you begin. Make sure to poll all transactions.

ATTENTION: Electrostatic Sensitive Device -

OBSERVE PRECAUTIONS FOR HANDLING ELECTROSTATIC DISCHARGE SENSITIVE DEVICES

Follow the guidelines below to minimize the potential for damage from Electrostatic Discharge (ESD)



» Observe proper grounding techniques prior to handling any Electrostatic Discharge Sensitive (ESDS) device.

» If possible, use an ESD Field Service Kit with wrist strap, dissipative mat and grounding cord.

» Avoid standing on carpeted surfaces while working with ESDS devices.

» Never leave ESDS components/assemblies unattended.

» Keep a new component in its anti-static packaging as long as possible prior to installation.

» Handle ESDS components by the edges. Avoid touching any of the circuitry.



READ CAREFULLY: You must read and fully understand all instructions in this document before you do the procedure.

DFS Worldwide Brands

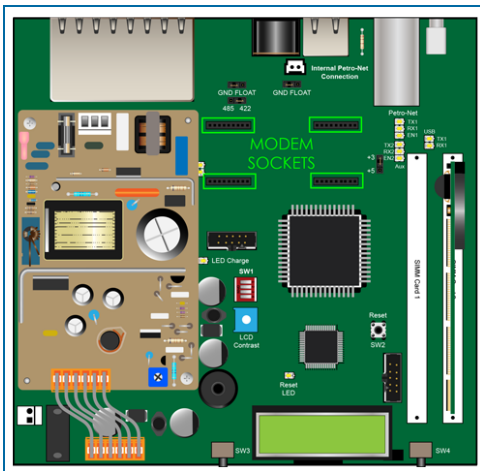
Remove the Cover



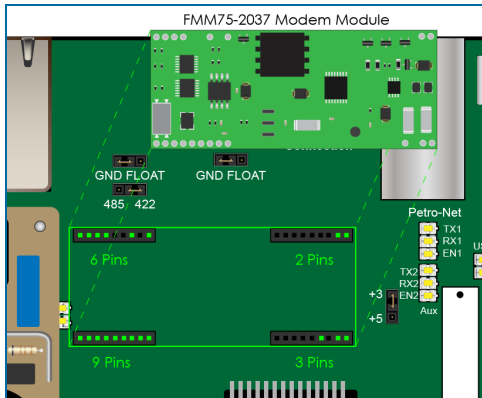
TIP: Label each cable with the port that it connects to before you disconnect the cables.

- Disconnect the power cable.
- Disconnect all other cables that are connected to the rear panel.
- Put the unit so the bottom faces up.
- Remove the four (4) cover screws.
- Put the unit back in the top up position.
- Remove the cover.

Install the Modem



The four (4) Modem Sockets are shown in the illustration above.

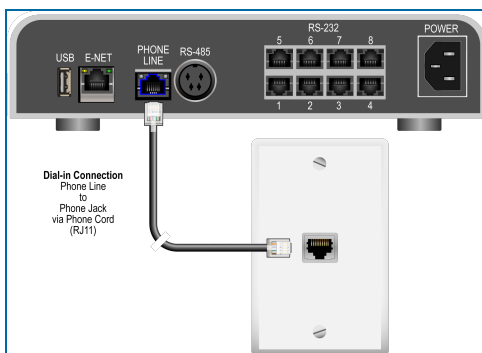


IMPORTANT: Make sure the module is pointed in the correct direction. Note the correct pin configuration.

Align the pins with the sockets as shown in the illustration above. Push firmly on both sides of the module to fully engage the pins.

Complete the Installation

- Carefully put the cover back in position.
- Put the unit so the bottom faces up.
- Align the cover screws with the applicable holes in the cover.
- Tighten the screws.
- Connect the cables that were disconnected before to the correct ports on the rear panel.



- With the supplied RJ11 phone cord (FM12-3017), connect the modem connector on the rear panel of the FSC3000 to a working phone outlet.



NOTE: It is recommended to have tested the phone outlet with a handset prior to testing with the modem.

- Reconnect the power cord. The unit will be back to normal operation.

The modem upgrade is now complete. Refer to [M1700 FSC3000 Installation Manual](#) for instructions on how to configure the system for proper modem operation.



IMPORTANT: Before you use this manual, make sure you have the most recent revision. Look at the revision of this document to make sure it agrees with the most current revision found in the FMS Technical Library. Download the latest revision if necessary.



NOTE: It will be necessary to have Single Sign-On (SSO) credentials to get access to manuals, instructions, software updates and other important assets. Speak with your FMS sales representative or contact FMS Customer Service at 1-888-679-3835 (1-888-OPWFUEL) for information. Once you have been approved for SSO credentials go to the [FMS Technical Library](#) to find the most recent revisions of all manuals and instructions.

Revisions - FMM20-4270-02

Revision	Approval	Date	Key Changes
0	NA	10/25/2005	Initial Release
1	ECO-20101	1/24/2023	Removed cable tie instruction. Update images and info panels.

