

VISI-FLO® Sight Flow Indicators

OPW Engineered Systems has been manufacturing sight flow indicators for more than 60 years. Our experience has led to many innovations in design and manufacturing, making VISI-FLO® the most thoroughly engineered sight flow indicator on the market. VISI-FLOs are available in two series: the standard 1400 Series and the 1500 High-Pressure/High-Temperature Series.

Standard Features

- **Maintenance-Free Design** – VISI-FLO’s unique bolt-on-body design requires no special maintenance or torquing sequence to prevent leaks. This results in a safer, more reliable sight flow indicator than those units that use tie rods to fasten the lens and seal to the body.
- **Dimensionally Interchangeable** – “FJP” Flanged VISI-FLOs feature end-to-end dimensions that match other manufacturers’ units. “FJP” units are available in 3/4”, 2”, 3” and 4”.
- **Rated for Full-Vacuum Service**



OPW VISI-FLO Guarantee



EXCLUSIVE 3-YEAR NO LEAK GUARANTEE

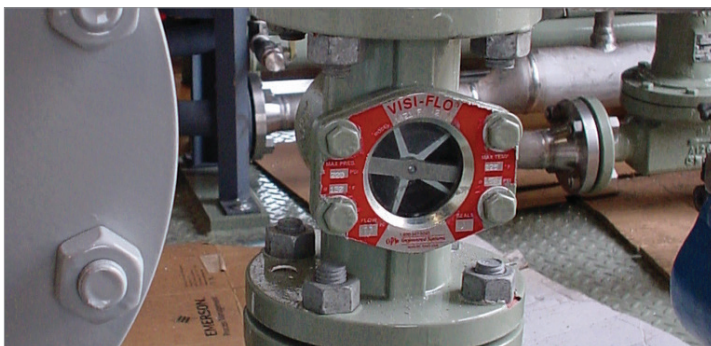
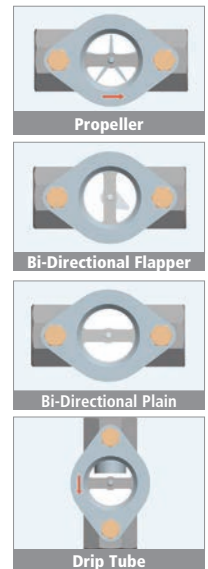
VISI-FLO’s innovative radial seal creates a constant and uninterrupted sealing force between the body and outside diameter of the glass lens. This sealing method provides a longer-lasting and better seal than conventional flat seals.



MOST ITEMS SHIP WITHIN 3 DAYS

Four Indicator Styles:

- Propeller** – The best way to show flow of opaque liquids. Ideal for observation at a distance. Flow from right to left is standard. Specify if left-to-right flow is needed. Not recommended for flow rates more than 100 GPM.
- Bi-Directional Flapper** – This indicator points in either direction to show you at a glance which way the liquid is flowing.
- Bi-Directional Plain** – When the color and clarity of your liquid are of prime importance.
- Drip Tube** – Ideal for gravity, extremely low or intermittent flow. Keeps product from dripping on the glass. Ensures constant see-through for vertical lines.



Applications

- Lubrication Lines
- Filtration Lines
- Cooling/Coolant Lines
- Drain Lines

When is VISI-FLO Needed?

- Is There Flow?
- Which Direction is Flow?
- Is Valve Open/Closed?
- Is Line Empty/Drained?
- What Color/Clarity is Product?
- Seeing is Believing!

Learn More



OPW ES Process Products & Accessories Catalog

Selection Guide

Construction

- 2 - Carbon Steel
- 3 - Bronze
- 7 - 316 Stainless Steel
- 8 - Ductile Iron
- 9 - Alloy 20

Other construction materials available

Indicator Material

- D - Delrin® (Std. 1400 Series, white)
- R - Ryton® (Std. 1500 Series, brown)
- T - PTFE (Std. 6" - 12", white)
- C - Carbon Steel (Drip Tubes only)
- S - Stainless Steel (Drip Tubes only)

End Connections

- Blank - FNPT
- F - ASME 150-Lb. Flange
- B - British Threaded
- FJP - Flanged Replacement
- FT - ASME 300-Lb. Flange
- SW - Socket Weld

1521RF **-020 1**

Shielding

- Blank - Not Shielded
- SK - Shielded

Series

- 14 - 1400 Series
- 15 - 1500 Series

See charts below for temperature and pressure ratings.

Indicator

- 1 - Propeller (1/4" to 4" only)
- 2 - Flapper
- 3 - Drip Tube
- 4 - Low Flow (1/4", 3/8", 1/2" only)

Size

- 001 - 1/8"
- 002 - 1/4"
- 004 - 3/8"
- 005 - 1/2"
- 007 - 3/4"
- 010 - 1"
- 012 - 1-1/4"
- 015 - 1-1/2"
- 020 - 2"
- 030 - 3"
- 040 - 4"
- 060 - 6"
- 080 - 8"
- 100 - 10"
- 120 - 12"

Seal Materials

- 1 - Buna-N
- 2 - Fluorocarbon (Std. 1500 Series)
- 3 - PTFE
- 4 - EPDM
- 5 - Neoprene (Std. 1400 Series)
- 6 - Kalrez®
- X - Customer Specified

Availability of styles, sizes and materials may vary depending upon VISI-FLO configuration. Consult OPW Customer Service regarding your exact requirements.

Shield Kits

1400SK - 1720

Shield Kit, 1400 & 1500 Series

Size

- 1720 = 1/4", 3/8", 1/2"
- 1740 = 3/4", 1"
- 1770 = 1-1/4", 1-1/2", 2"
- 1790 = 3", 4"
- 1800 = 6", 12"

NOTE:

All Shield Kits include Shield (1) & Mounting Hardware

Seal Repair Kits

1400 RK - 005 1

Series

- 14 = 1400 Series
- 15 = 1500 Series

RK

Repair Kit

Size

- 005 - 1/4", 3/8", 1/2"
- 010 - 3/4", 1"
- 020 - 1-1/4", 1-1/2", 2"
- 040 - 3", 4"
- 060 - 6", 12"

Seal Materials

- 1 = Buna
- 2 = Fluorocarbon (Viton®)
- 3 = PTFE
- 4 = EPDM
- 5 = Neoprene

NOTES:

1. Original seal material should be stamped on unit nameplate.
2. All kits include top & bottom seals, glass, gaskets & instruction sheet

VISI-FLO®	Max Pressure	Max Temperature ¹	Seals	Indicators	Windows
1400 Series Threaded/Flanged (1/4" - 4")	200 PSIG @ 150° F	250°F @ 135 PSIG	Neoprene (Std.)	Delrin®	1/4" - 2" Tempered Soda Lime 3" - 12" Annealed Soda Lime
1400 Series Flanged (6"-12")	150 PSIG @ 150° F	150°F @ 150 PSIG	Neoprene (Std.)	Delrin®	
1500 Series Threaded (1/4" - 2")	400 PSIG @ 150° F	400°F @ 160 PSIG	Fluorocarbon (Std.)	Ryton®	Tempered Borosilicate
1500 Series Flanged (3/4" - 4")	285 PSIG @ 100° F ⁴	400°F @ 200 PSIG ³	Fluorocarbon (Std.)	Ryton®	Tempered Borosilicate
1500 Series Flanged (6"-12")	275 PSIG @ 100° F	400°F @ 200 PSIG ²	Fluorocarbon (Std.)	Ryton®	Tempered Borosilicate

1- With Standard Seals; 2-Stainless-Steel units rated @195 PSIG; 3-Stainless-Steel units rated @195 PSIG, ductile iron @150 PSIG; 4-Stainless-Steel units rated @275 PSIG, ductile iron @245 PSIG
Note: Alternate seals may result in higher operating temperatures. Temperatures up to 500°F possible with high-temperature PTFE seals.
 1500 Series units supplied with Canadian Registration Numbers (CRN) carry a 100-PSIG Maximum Allowable Working Pressure at Max Temperature of 400°F/204°C.



www.opw-es.com | 9393 Princeton-Glendale Road | Hamilton, Ohio, 45011, USA | Phone: (800) 547-9393

NOTE: All information subject to engineering and/or other changes. All trade names are copyrighted. Patents Pending. ©2023 OPW Engineered Systems ©2023 Delaware Capital Formation, Inc. All Rights Reserved. DOVER and the DOVER logo are registered trademarks of Delaware Capital Formation, Inc., a wholly-owned subsidiary of Dover Corporation.