

STANDARDLINE

Slide-Sleeve (SLS) Top Loading Arm

StandardLine Loading Arms by OPW Engineered Systems raise the bar in quality and performance for the industry. Get OPW's best-in-class loading systems in pre-engineered sizes, materials and feed orientations with delivery in 20 days or less.



The slide sleeve type loading arm incorporates a slide-sleeve assembly that telescopes in and out to adjust for variations in the distance from the loading rack to the tank truck. It is used primarily in small bulk plants and terminals for top loading fuel oil or other petroleum products. This cost-effective loading arm is time-tested as a practical method of locating the drop tube accurately and easily.

The slide sleeve is a medium-duty unit designed for flow rates up to 15 ft/sec (4.5m/sec.). Higher flow rates may tend to push the inner tube out beyond the loading point.

Features and Benefits:

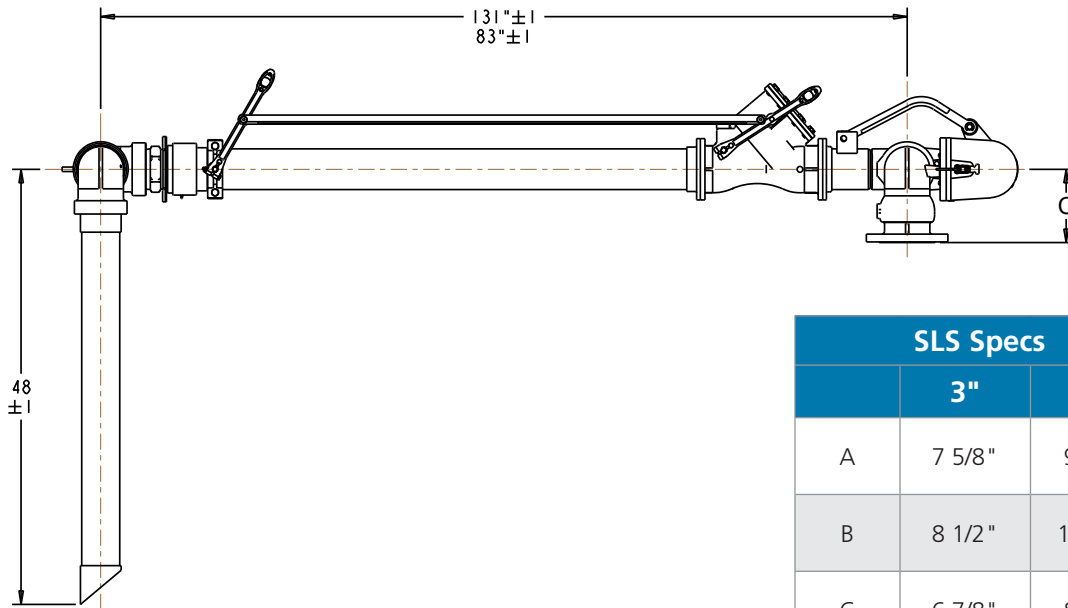
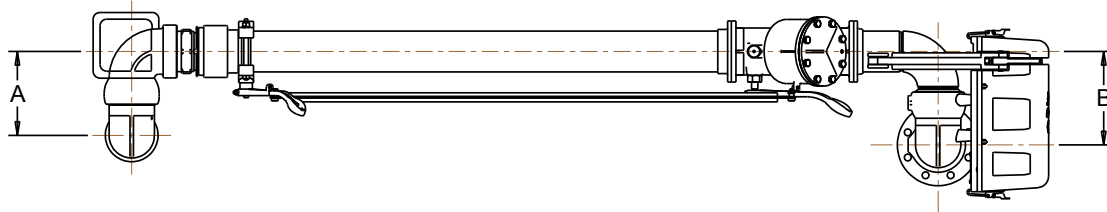
- Telescoping Primary Arm provides variable reach
- 3" and 4" sizes
- Ductile Iron/Aluminum Construction
- 3000 Series Swivel Joints
 - Simple, Proven Design
 - Ductile Iron/Aluminum Construction
 - Low-Temperature Fluorocarbon Seals
 - Wide Compatibility
- 790 EZ Adjust Counterbalance
 - Safe, Easy Spring Adjustment
 - Integral Upward, Downward Travel Stops
 - 5-Year Warranty
- Available with Loading Valve
 - Safety Closure will automatically close if left unattended
 - Remote Control Linkage allows operator to actuate valve while on truck

ALL STANDARDLINE ARMS FEATURE

- Fast Delivery – 20 Days or Less![†]
- Menu of Options to customize your arm
- Freight is included across continental U.S. & Canada
- Exclusive 3-Year Warranty included

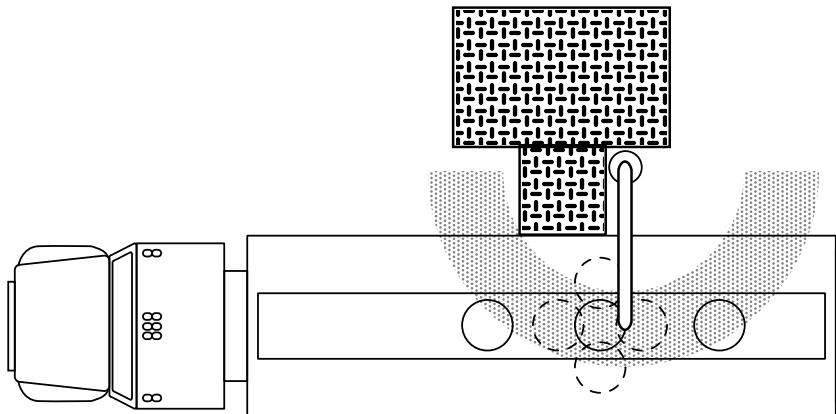
Slide-Sleeve (SLS) Loader Dimensions*

StandardLine Terminal Configuration



SLS Specs		
	3"	4"
A	7 5/8"	9 1/4"
B	8 1/2"	10 1/4"
C	6 7/8"	8 1/8"

Operating Envelope: Slide-Sleeve Arm



* Required to accommodate StandardLine Offering. 48" Drop Dimension shown. 72" also available. Other options are available upon request.

Build Your Standard SLS Arm

1. Fill in the corresponding code for your selections.
2. Add accessories by filling in the appropriate corresponding number for each option.

Example

SLS DA 083 00 48M UR 0402 — 1 0

SLS **DA** **083** x **00** x

Arm Style: _____
(SLS) Slide-Sleeve


Material Options: _____
(DA) Ductile Iron/Aluminum

Primary Length: _____
(83) 83" Closed / 131" Open


Secondary Length: _____
(00) Not Applicable

Drop Length: _____
(48M) 48" w/ Mitre Cut
(48D) 48" w/ Deflector
(72M) 72" w/ Mitre Cut
(72D) 72" w/ Deflector


Orientation: _____




(UR) Upfeed/RH



(DR) Downfeed/RH



(UL) Upfeed/LH



(DL) Downfeed/LH

Size and Seal Type: _____
(0302) 3" with fluorocarbon
(0402) 4" with fluorocarbon

1 2

1 Loading Valve

- 0 - No Loading Valve
- 1 - Aluminum Loading Valve with Remote



2 Assembly, Testing & Boxing (ATB)

- 0 - No ATB
- 1 - ATB Included
- 2 - ATB, Export

Bolt-On Handle



Bucket Hook

Top Loading Accessories*

Part	3" P/N	4" P/N
Bolt-On Handle, Alum.	BOH-S-3	BOH-S-4
Bucket Hook	BH-3	BH-4

* Accessories ordered separately

Technical Features	
Materials	Ductile Iron/Aluminum
Seals	Low-Temp Fluorocarbon
Working Pressure	80 PSI (5.5 Bar)
Test Pressure	120 PSI (8.2 Bar)
Operating Temperature	-20°F to 140°F (-29°C to 60°C)
Up/Down Angular Movement	+70° to -20° (from horizontal)
Typical Horizontal Spacing	24" (610 mm)
Typical Vertical Spacing	15" (381 mm)
Typical Reach (radius)	60" to 108" (1,524 mm to 2,743 mm)
Nominal Diameter	3" and 4"
Typical Flow Rates (Velocities < 15 ft/sec (7.5 M/sec))	300-600 GPM (2,000-3,500 LPM)

Materials of Construction	
Inlet Flange	150 ANSI ASTM A105
Inlet Swivel	Ductile Iron ASTM A536
Piping	Sch 40 Aluminum ASTM B241
Apex/Drop Tube Swivel (p/n 3640FT-0402)	Aluminum ASTM B26 A356 T6

Additional Information	
Weld Procedure	Per the ASME Boiler & Pressure Vessel Code Section IX
Radiograph/X-Ray	Per OPW Standard, 5% random/factory lot
Testing	All assembled Loading Arms shall be tested to 1.5X the rated design pressure.
Surface Treatments	All Carbon Steel/Ductile Iron components to be protected with a 2-part paint process. Aluminum components to be unpainted.
Lubricant	OPW 880 High-Performance Synthetic Lubricant
Gasketing	KlingerSil C5400
Warranty	Standard warranty of three years after date of invoice shall apply. LYNX API Coupler warranty to be three years after shipment from factory. 790 Counterbalance warranty to be five years after shipment from factory.
Freight	All shipments are F.O.B Factory Lebanon, OH. Full freight is allowed on surface transportation within continental United States and Canada.
Factory Assembly, Testing & Boxing (ATB)	If this option is selected, Loading Arm would be fully assembled, tested and shipped in protective wooden crate. Note: It may be necessary to ship Loading Arm in sections to accommodate crating, shipping and rigging. Arm will be shipped as fully assembled as possible.

† '20 Days or Less' refers to twenty working days.