

STANDARDLINE

Fixed Reach 3000 (FX3) Top Loading Arm

StandardLine Loading Arms by OPW Engineered Systems raise the bar in quality and performance for the industry. Get OPW's best-in-class loading systems in pre-engineered sizes, materials and feed orientations with delivery in 20 days or less.



Features and Benefits:

- 3000 Series Swivel Joints
 - Simple, Proven Design
 - Carbon Steel/Aluminum Construction
 - Low-Temperature Fluorocarbon Seals
 - Wide Compatibility
- 790 EZ Adjust Counterbalance
 - Safe, Easy Spring Adjustment
 - Integral Upward, Downward Travel Stops
- Available with Loading Valve
 - Safety Closure will automatically close if left unattended
 - Remote Control Linkage allows operator to actuate valve while on truck

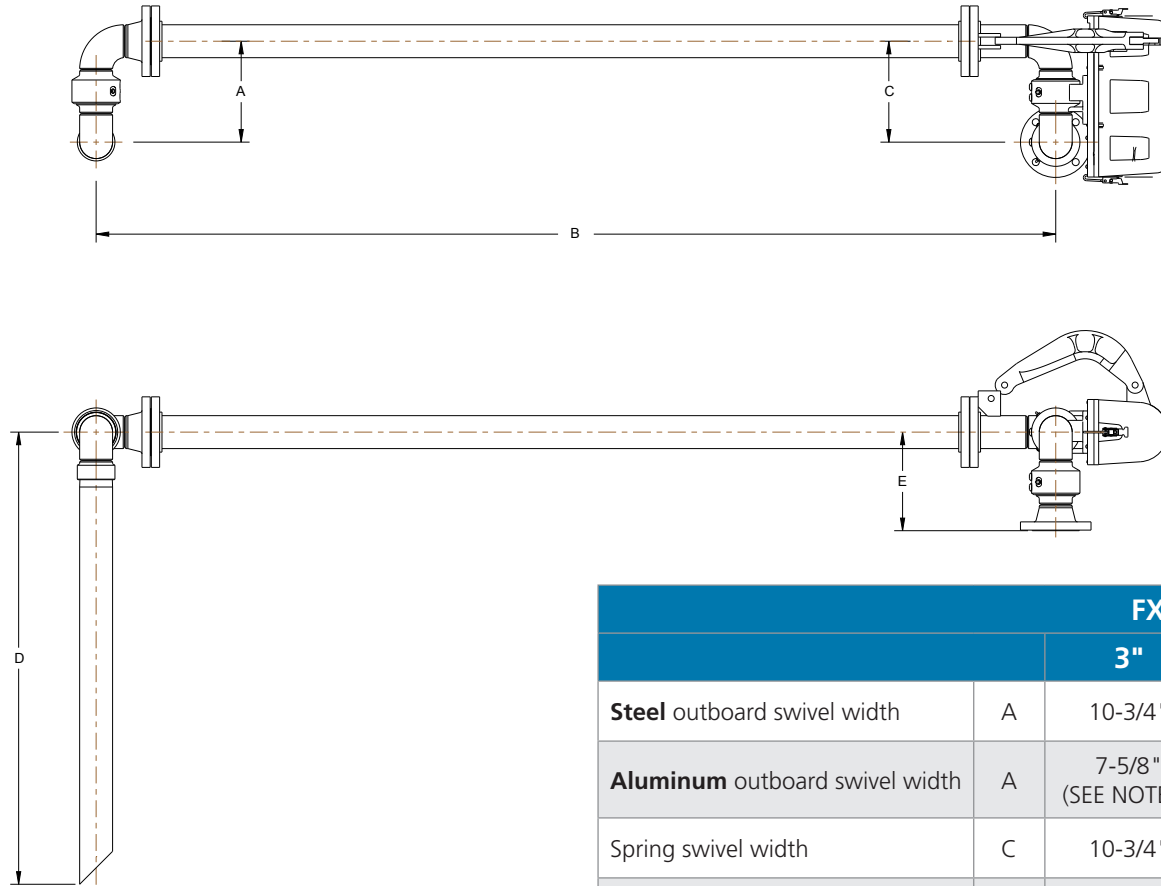
This simple arm incorporates only three swivel planes of rotation and is designed for use in top-loading installations where the vehicle is located at a fixed distance from the riser pipe. The two swivel planes at the inlet permit both up-and-down and side-to-side movement of the assembly, and the third swivel plane allows the drop pipe to remain vertical.

ALL STANDARDLINE ARMS FEATURE

- Fast Delivery – 20 Days or Less![†]
- Menu of Options to customize your arm
- Freight is included across continental U.S. & Canada
- Exclusive 3-Year Warranty included

Fixed Reach 3000 (FX3) Loader Dimensions*

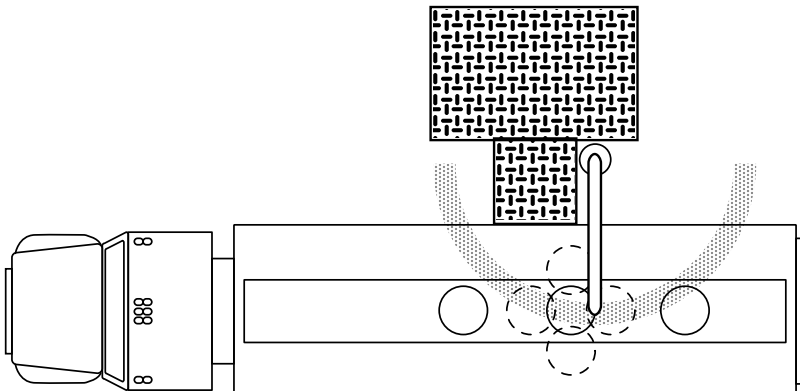
StandardLine Terminal Configuration



FX3 Specs			
		3"	4"
Steel outboard swivel width	A	10-3/4"	12-3/4"
Aluminum outboard swivel width	A	7-5/8" (SEE NOTE 1)	9-1/4"
Spring swivel width	C	10-3/4"	12-3/4"
Spring swivel height	E	10-1/2"	11-3/4"

NOTE: (1) - A 3" aluminum 3640FTO swivel has a dimension of 10-1/8"
(2) - DSF outboard swivels are single-race

Operating Envelope: Fixed Reach Arm

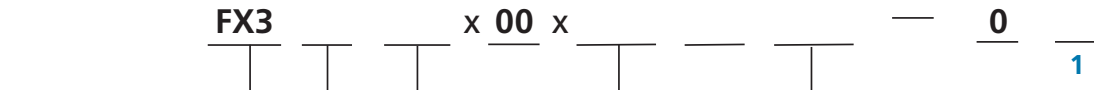


*StandardLine Offering includes 48" Drop Dimension as shown. 72" Drop also available. Other options are available upon request.

Build Your Standard Fixed Reach 3000 (FX3) Top Loading Arm

1. Fill in the corresponding code for your selections.
2. Add accessories by filling in the appropriate corresponding number for each option.

Example									
<u>FX3</u>	<u>CC</u>	<u>120</u>	<u>00</u>	<u>48M</u>	<u>UR</u>	<u>0402</u>	—	<u>0</u>	<u>1</u>



Arm Style:

(FX3)
Fixed Reach 3000

Material Options:

(CC) Carbon Steel/Carbon Steel
(-20° F to 500° F) A135, A106
(SS) Stainless Steel/Stainless Steel
(-50° F to 500° F) A312, 316L

Primary Length: (SCH 10)

(84) 84" available in 3" & 4" diameter
(90) 90" available in 3" & 4" diameter
(96) 96" available in 3" & 4" diameter
(102) 96" available in 3" diameter
(108) 108" available in 3" diameter
(120) 120" available in 3" diameter

Secondary Length:

(00) Not Applicable

Drop Length: (SCH 40)

(48M) 48" w/ Mitre Cut (48D) 48" w/ TEE Deflector
(72M) 72" w/ Mitre Cut (72D) 72" w/ TEE Deflector

Orientation:



(UR) Upfeed/RH



(DR) Downfeed/RH



(UL) Upfeed/LH



(DL) Downfeed/LH

Size | Seal and Gasket Type

(0302) 3" FKM-GFLT (-20° F to 400° F) (0402) 4" FKM-GFLT (-20° F to 400° F)
(0303) 3" TFE-PFA (-50° F to 500° F) (0403) 4" TFE-PFA (-50° F to 500° F)

Garlock 3300
Garlock 3500

*Additional Lengths & Drops available in ProLine

1 Assembly, Testing & Boxing (ATB)

- 0 - No ATB
- 1 - ATB Included
- 2 - ATB, Export

Technical Features	
Materials	See Options
Seals	See Options
Working Pressure	80 PSI (5.5 Bar) 60 PSI
Test Pressure	120 PSI (8.2 Bar) 90 PSI
Operating Temperature	Stainless GFLT: -20°F - 55°F Stainless PFA: -50°F - 500°F Carbon GFLT/PFA: -20°F - 400°F
Up/Down Angular Movement	+65° to -20° (from horizontal)
Typical Horizontal Spacing	24" (610 mm)
Typical Vertical Spacing	15" (381 mm)
Typical Reach (radius)	60" to 108" (1,524 mm to 2,743 mm)
Nominal Diameter	3" and 4"
Typical Flow Rates (Velocities < 15 ft/sec (7.5 M/sec))	3" and 4" See Pricebook

Materials of Construction	
Inlet Flange	150 ANSI ASTM A105 /A182 SS
Swivel(s)	Carbon Steel ASTM A536 Stainless A351 CF3M, CF8M
Piping	See Above

Additional Information	
Weld Procedure	Per the ASME Boiler & Pressure Vessel Code Section IX
Radiograph/X-Ray	Per OPW Standard, 5% random/factory lot
Testing	All assembled Loading Arms shall be tested to 1.5X the rated design pressure.
Surface Treatments	All Carbon Steel/Ductile Iron components to be protected with a 2-part paint process. Aluminum and Stainless components to be unpainted.
Lubricant	OPW 880 High-Performance Synthetic Lubricant
Gasketing	See Options
Warranty	Standard warranty of three years after date of invoice shall apply. LYNX API Coupler warranty to be three years after shipment from factory. 790 Counterbalance warranty to be five years after shipment from factory.
Freight	All shipments are F.O.B Factory Lebanon, OH. Full freight is allowed on surface transportation within continental United States and Canada.
Factory Assembly, Testing & Boxing (ATB)	If this option is selected, Loading Arm would be fully assembled, tested and shipped in protective wooden crate. Note: It may be necessary to ship Loading Arm in sections to accommodate crating, shipping and rigging. Arm will be shipped as fully assembled as possible.

† '20 Days or Less' refers to twenty working days.