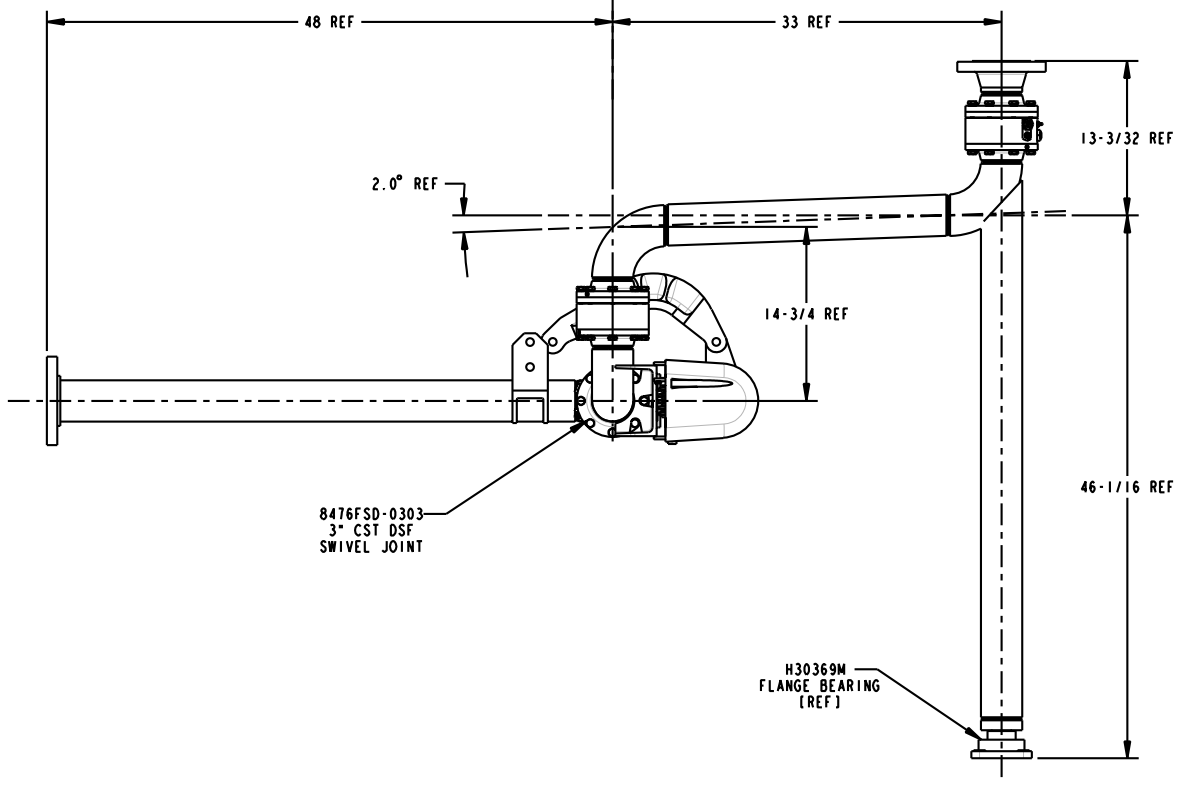
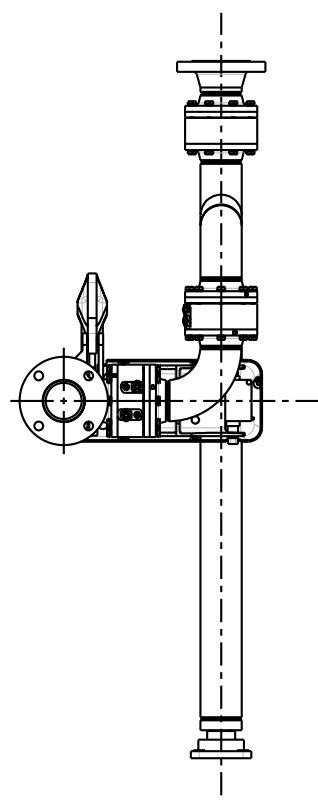
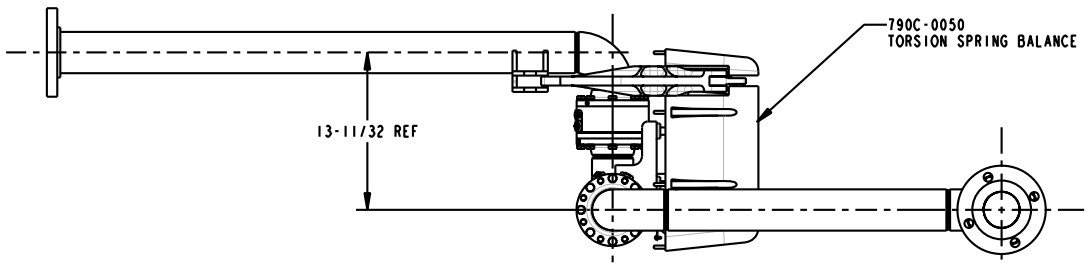
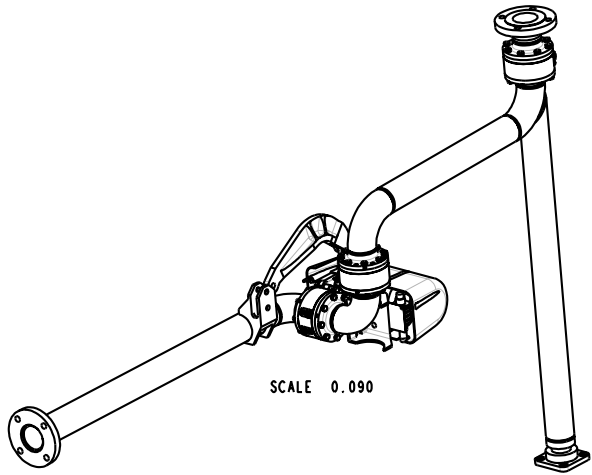


THIS DRAWING IS NOT TO BE SCALED. FOR ADDITIONAL INFORMATION, PLEASE CONTACT OUR ENGINEERING DEPT.

REVISIONS					
LTR	ECN #	DESCRIPTION	DRAWN	APPROVED	DATE
-	-	-	-	-	-



TAG:
STATION #3 EAST AMS

H02209PA INSTRUCTION SHEET
H30446M [1] NAME PLATE
H30447M [2] SST TIE BANDS

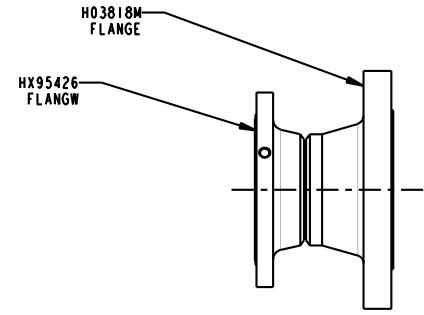
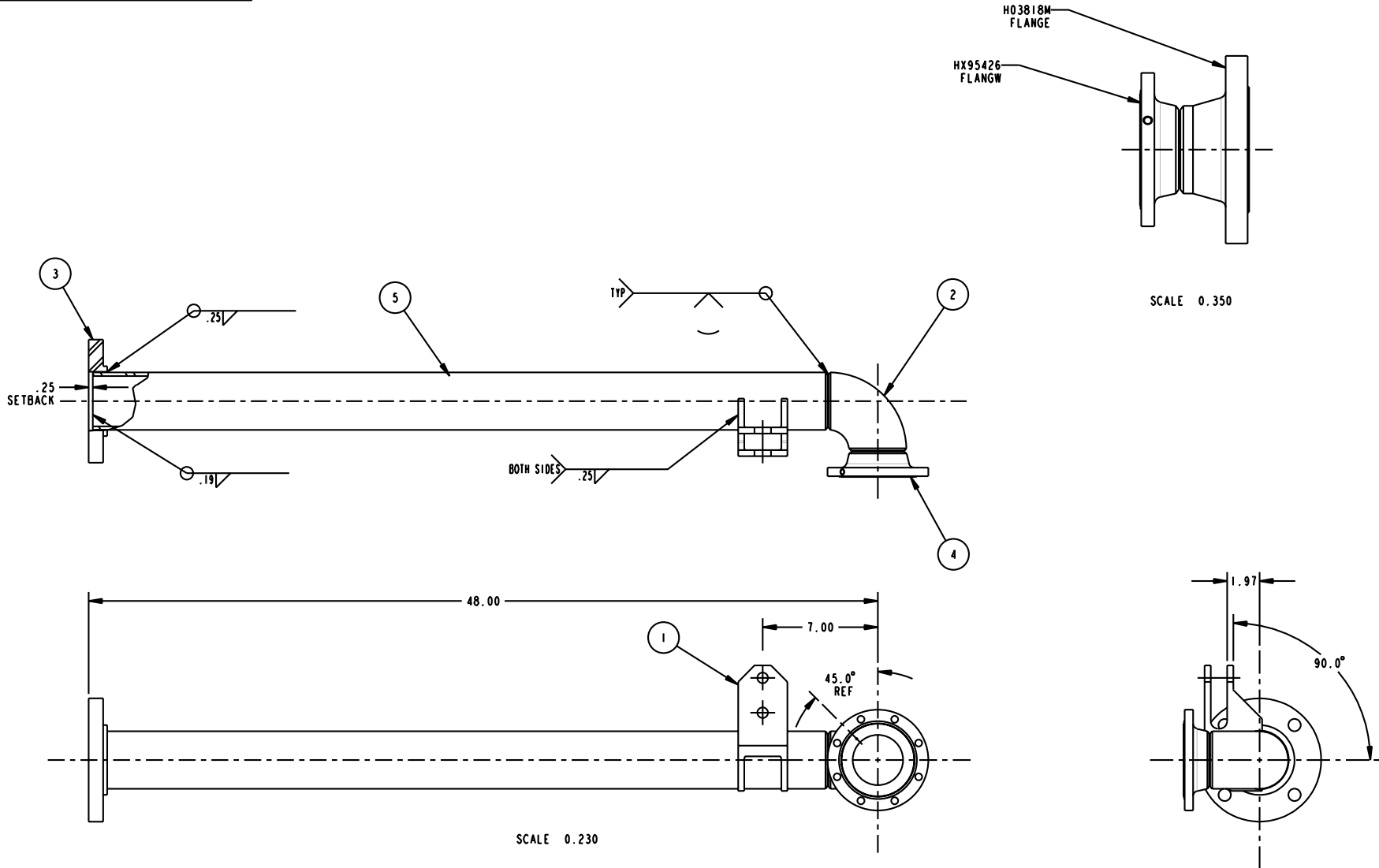
CONFIDENTIAL THIS DOCUMENT CONTAINS INFORMATION WHICH IS PROPRIETARY TO OPW, AND SHOULD BE PROTECTED ACCORDINGLY.

SIGNATURES		MO-DA-YR	REV:	DESCRIPTION: 3" SWIVEL, CST, TFE, DFRH, 2 -SLOPE, FLG BRG	
DRAWN:	SCK	10/02/07	-	PART NUMBER:	
CHECKED:	-	-	-	D 8476FSD-0303-E817	
MATERIAL:	CST	WEIGHT:	-	SCALE: 0.130	SHEET 1 OF 3

UNLESS OTHERWISE SPECIFIED
TOLERANCES ON DIMENSIONS
3 DECIMALS +/- 0.005
2 DECIMALS +/- 0.015
1 DECIMAL +/- 0.030
ANGLES +/- 1/2 DEG
MACHINED SURFACES 125 RMS MAX

OPW **Engineered Systems**
A **ROBERT** Resources Company
Lebanon, Ohio 45036 USA
3D GENERATED DRAWING

THIS DRAWING IS NOT TO BE SCALED. FOR ADDITIONAL INFORMATION, PLEASE CONTACT OUR ENGINEERING DEPT.



- NOTES:
1. WELDING PER OPW WELD SPEC. W-1, W-4, W-5, W-8, W-9. REFERENCE APPLICABLE WELD SPECIFICATIONS PER COMPONENT
 2. COMPONENT FACE(S) PERPENDICULAR TO CENTER LINE(S) $\pm 5^\circ$
 3. ALL FLANGE BOLT HOLES TO STRADDLE CENTER LINE(S)
 4. PROTECT FLANGE FACE(S) AND MACHINED SURFACES WHEN WELDING
 5. ORIENT COMPONENTS AS SHOWN $\pm 2^\circ$

ITEM	QTY	UM	PART NUMBER	LENGTH	DESCRIPTION
5	1	FT	9030CS40	44.690	PIPE, S40, CST, 3"
4	1	EA	HX95426		FLANGE, CST, DSF[METRIC-FAB], 3"
3	1	EA	H-30458-M		FLANGE, FFSO, 150#, CST, 3"
2	1	EA	H-03821-M		ELBOW, SR, S40, CST, 3"
1	1	EA	HX89739		BRACKET, PIN LUG, CST, 3"

CONFIDENTIAL THIS DOCUMENT CONTAINS INFORMATION WHICH IS PROPRIETARY TO OPW, AND SHOULD BE PROTECTED ACCORDINGLY.

UNLESS OTHERWISE SPECIFIED
 TOLERANCES ON DIMENSIONS
 3 DECIMALS ± 0.005
 2 DECIMALS ± 0.015
 1 DECIMAL ± 0.030
 ANGLES $\pm 1/2$ DEG
 MACHINED SURFACES 125 RMS MAX

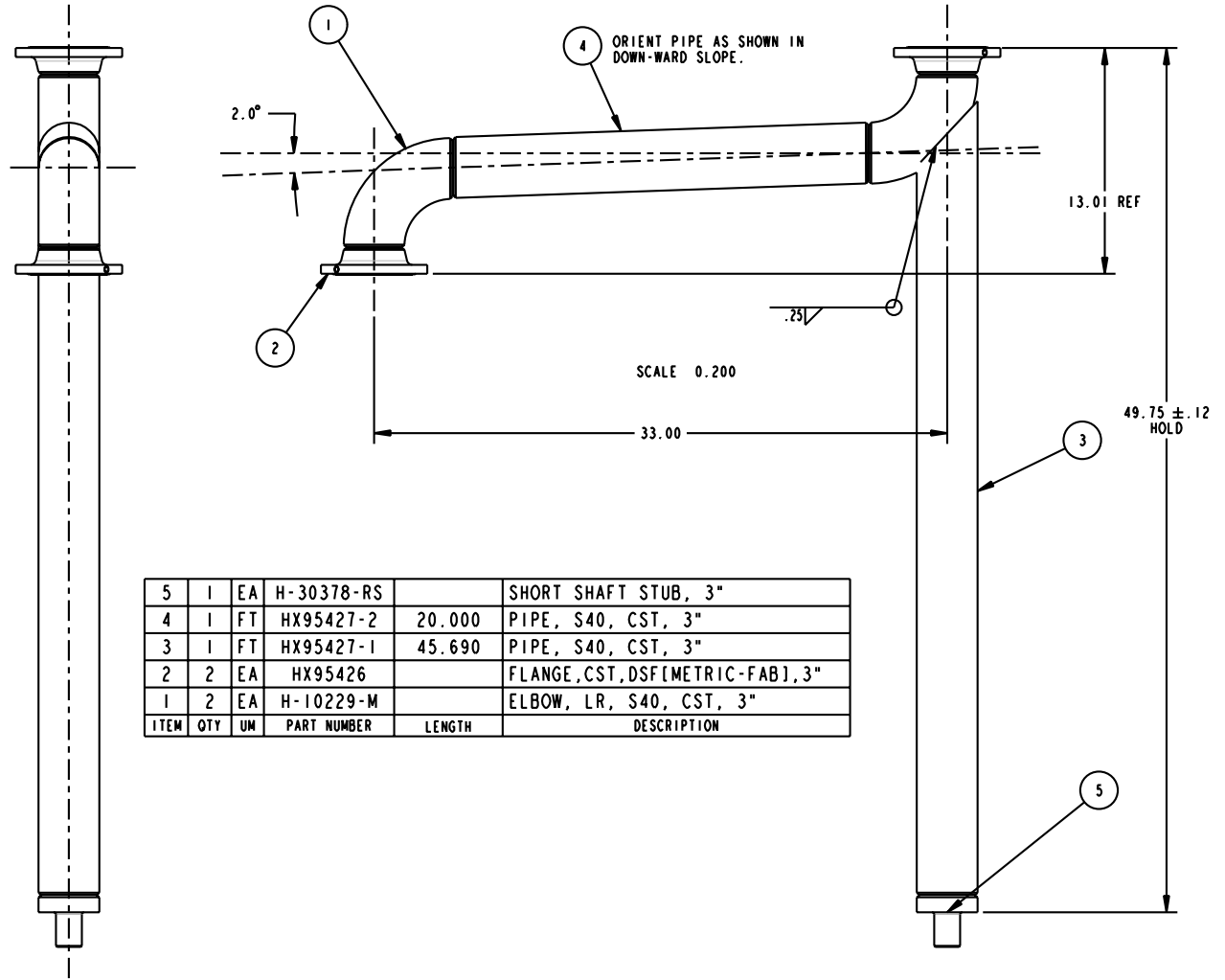
SIGNATURES MO-DA-YR
 DRAWN: SCK 10/02/07
 CHECKED: - -
 MATERIAL: CST WEIGHT: -

DESCRIPTION: 3" SWIVEL, CST, TFE, DFRH, 2 -SLOPE, FLG BRG

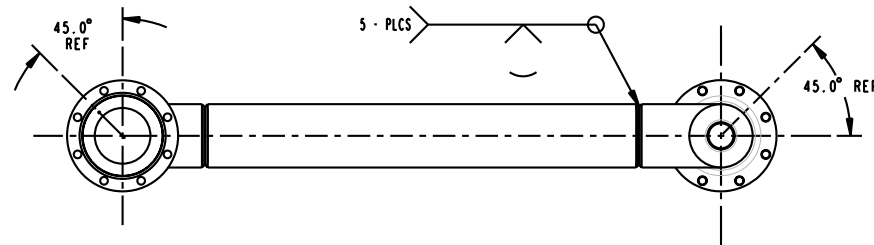
REV: -
 PART NUMBER:
8476FSD-0303-E817
 SCALE: 0.130 SHEET 2 OF 3

OPW Engineered Systems
 A BOSTON Resources Company
 Lebanon, Ohio 45036 USA
 3D GENERATED DRAWING

THIS DRAWING IS NOT TO BE SCALED. FOR ADDITIONAL INFORMATION, PLEASE CONTACT OUR ENGINEERING DEPT.



ITEM	QTY	UM	PART NUMBER	LENGTH	DESCRIPTION
5	1	EA	H-30378-RS		SHORT SHAFT STUB, 3"
4	1	FT	HX95427-2	20.000	PIPE, S40, CST, 3"
3	1	FT	HX95427-1	45.690	PIPE, S40, CST, 3"
2	2	EA	HX95426		FLANGE, CST, DSF [METRIC-FAB], 3"
1	2	EA	H-10229-M		ELBOW, LR, S40, CST, 3"



NOTES:

1. WELDING PER OPW WELD SPEC. W-1, W-4, W-5, W-8, W-9. REFERENCE APPLICABLE WELD SPECIFICATIONS PER COMPONENT
2. COMPONENT FACE(S) PERPENDICULAR TO CENTER LINE(S) ±.5°
3. ALL FLANGE BOLT HOLES TO STRADDLE CENTER LINE(S)
4. PROTECT FLANGE FACE(S) AND MACHINED SURFACES WHEN WELDING
5. ORIENT COMPONENTS AS SHOWN ±2°

CONFIDENTIAL THIS DOCUMENT CONTAINS INFORMATION WHICH IS PROPRIETARY TO OPW, AND SHOULD BE PROTECTED ACCORDINGLY.		DESCRIPTION: 3" SWIVEL, CST, TFE, DFRH, 2 -SLOPE, FLG BRG	
UNLESS OTHERWISE SPECIFIED TOLERANCES ON DIMENSIONS 3 DECIMALS +/- 0.005 2 DECIMALS +/- 0.015 1 DECIMAL +/- 0.030 ANGLES +/- 1/2 DEG MACHINED SURFACES 125 RMS MAX		SIGNATURES	MO-DA-YR
DRAWN: SCK		10/02/07	REV: -
CHECKED: -		SIZE: D	PART NUMBER:
MATERIAL: CST		WEIGHT: -	8476FSD-0303-E817
		SCALE: 0.250	SHEET 3 OF 3

OPW Engineered Systems
A BOSTED Resources Company
Lebanon, Ohio 45036 USA
3D GENERATED DRAWING