

A

B

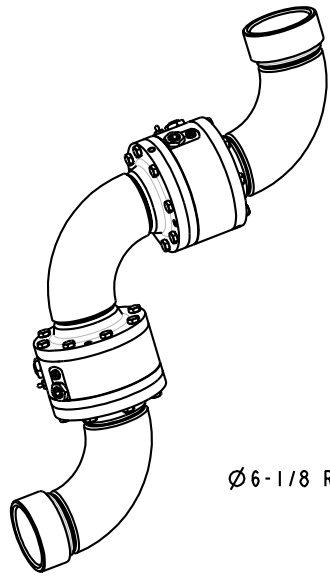
C

D

THIS DRAWING IS NOT TO BE SCALED. FOR ADDITIONAL INFORMATION, PLEASE CONTACT OUR ENGINEERING DEPT.

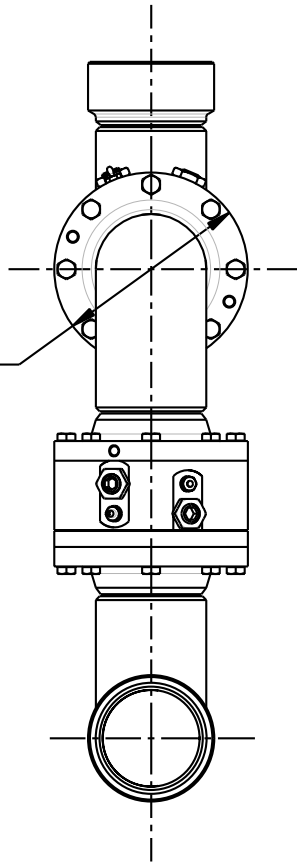
REVISIONS

LTR	ECN #	DESCRIPTION	DRAWN	APPROVED	DATE
REL	41360	INITIAL RELEASE	SCK		-



SCALE 0.150

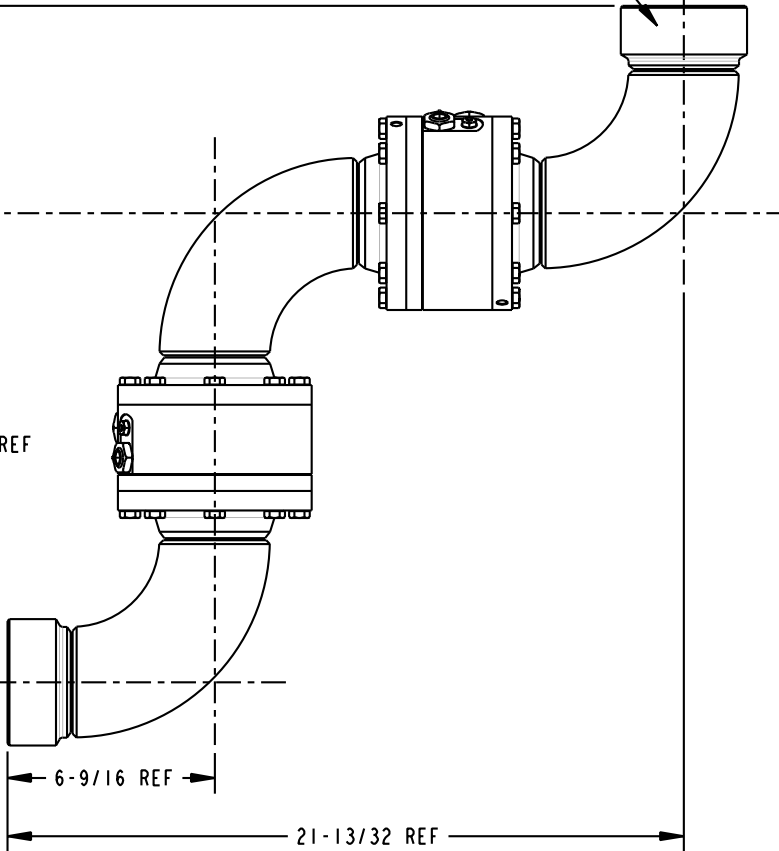
Ø6-1/8 REF



21-13/32 REF

14-27/32 REF

3" - 8 FNPT EACH END



6-9/16 REF

21-13/32 REF

NOTES:

1. AIR TEST @ 5 psi & 70 psi, OR HYDROSTATIC TEST PER CUSTOMER SPECIFICATION.
2. MAXIMUM PRESSURE 500 psi.

CONFIDENTIAL THIS DOCUMENT CONTAINS INFORMATION WHICH IS PROPRIETARY TO OPW, AND SHOULD BE PROTECTED ACCORDINGLY.

DESCRIPTION:

SWIVEL, 3" DSF STYLE 70

UNLESS OTHERWISE SPECIFIED

TOLERANCES ON DIMENSIONS  
 3 DECIMALS +/- 0.005  
 2 DECIMALS +/- 0.015  
 1 DECIMAL +/- 0.030  
 ANGLES +/- 1/2 DEG  
 MACHINED SURFACES 125 RMS MAX

SIGNATURES

DRAWN: SCK MO-DA-YR 09/26/03

CHECKED: NAC 10/13/03

MATERIAL: - WEIGHT: 68 lbs.

REV. REL

SIZE: C

SCALE: 0.250

SHEET 1 OF 1

PART NUMBER:

08X70-03XX

3D GENERATED DRAWING

OPW **Engineered Systems**  
 A **DOVER** Resources Company  
 Lebanon, Ohio 45036 USA

A

B

C

D