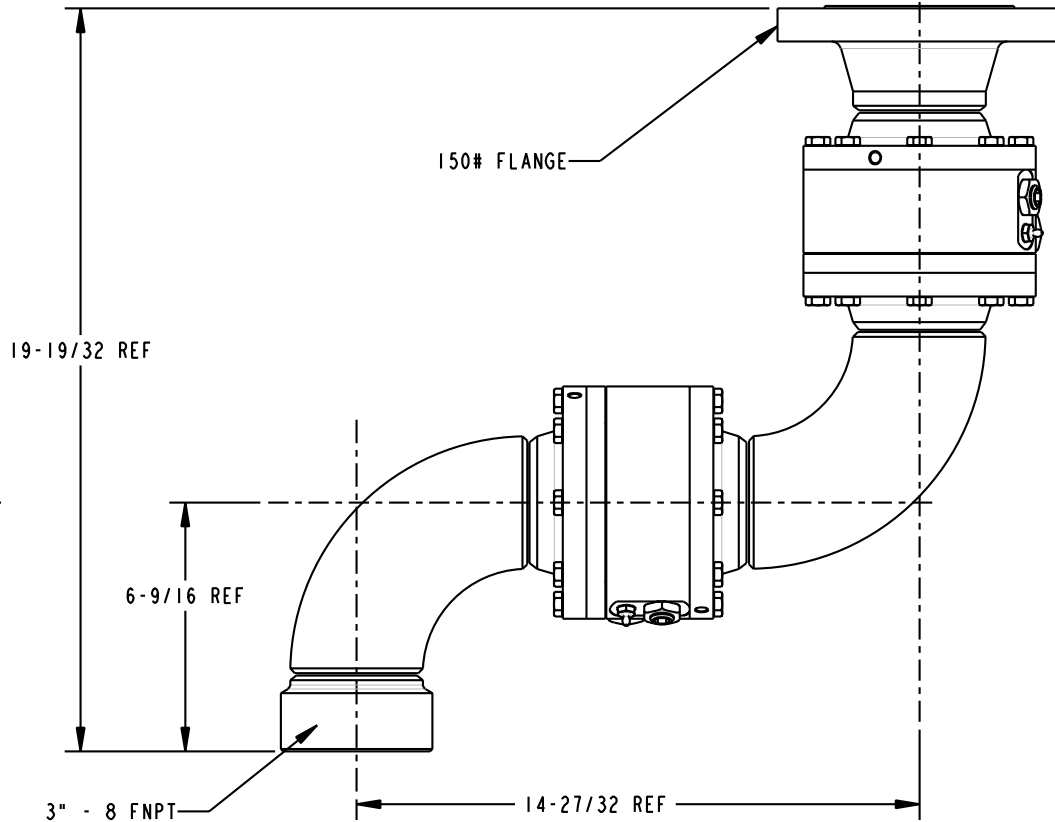
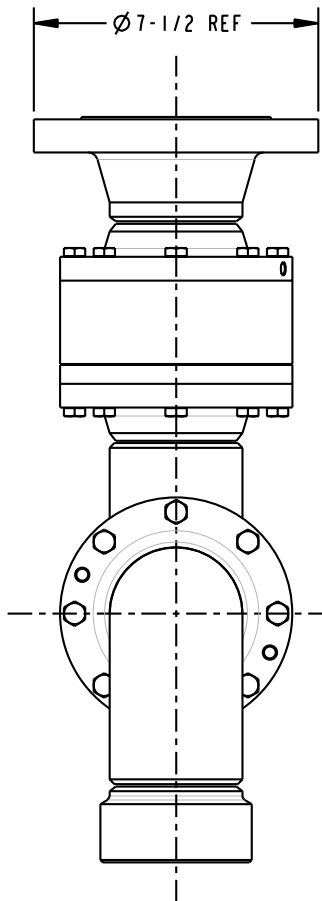
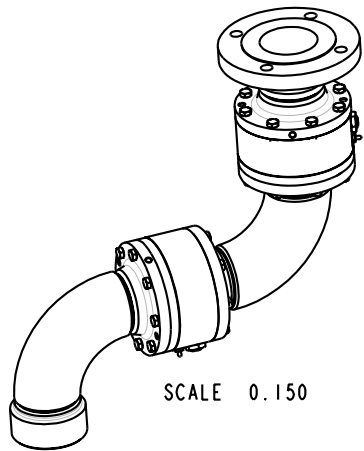


THIS DRAWING IS NOT TO BE SCALED. FOR ADDITIONAL INFORMATION, PLEASE CONTACT OUR ENGINEERING DEPT.

REVISIONS					
LTR	ECN #	DESCRIPTION	DRAWN	APPROVED	DATE
REL	41360	INITIAL RELEASE	SCK	NAC	10/13/03



NOTES:

- AIR TEST @ 5 psi & 70 psi, OR HYDROSTATIC TEST PER CUSTOMER SPECIFICATION.
- MAXIMUM PRESSURE 500 psi.

CONFIDENTIAL THIS DOCUMENT CONTAINS INFORMATION WHICH IS PROPRIETARY TO OPW, AND SHOULD BE PROTECTED ACCORDINGLY.			DESCRIPTION: SWIVEL, 3" DSF STYLE 50FO		
UNLESS OTHERWISE SPECIFIED TOLERANCES ON DIMENSIONS		SIGNATURES		MO-DA-YR	
3 DECIMALS +/- 0.005		DRAWN: SCK		09/25/03	
2 DECIMALS +/- 0.015		CHECKED: NAC		10/13/03	
1 DECIMAL +/- 0.030		MATERIAL:		WEIGHT: 72 lbs.	
ANGLES +/- 1/2 DEG		MACHINED SURFACES 125 RMS MAX		REV: REL	
				PART NUMBER: 08X50FO-03XX	
				SCALE: 0.300 SHEET 1 OF 1	
				3D GENERATED DRAWING	

OPW Engineered Systems
 A DOVER Resources Company
 Lebanon, Ohio 45036 USA