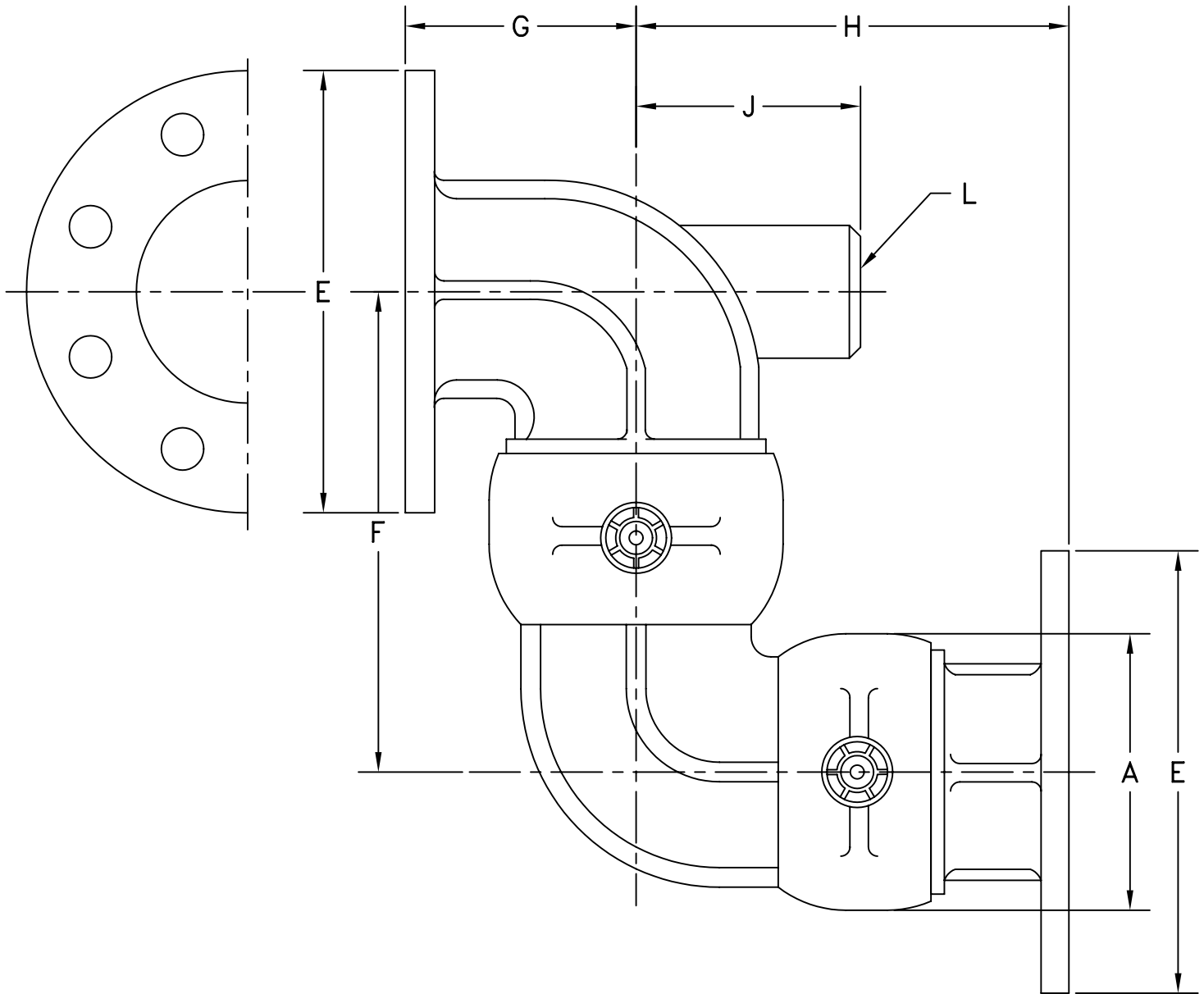


MATERIAL:
ALUMINUM

OPW Engineered Systems

STYLE 55FT SWIVEL JOINT-CAST



SIZE	4"
A	6-1/16"
E	6-5/8"
F	9-1/4"
G	5-13/16"
H	7-7/8"
J	3-1/8"
L	2"
∅ BOLT CIRCLE	4-7/8"
NO. BOLTS - ∅	(8) 7/16"