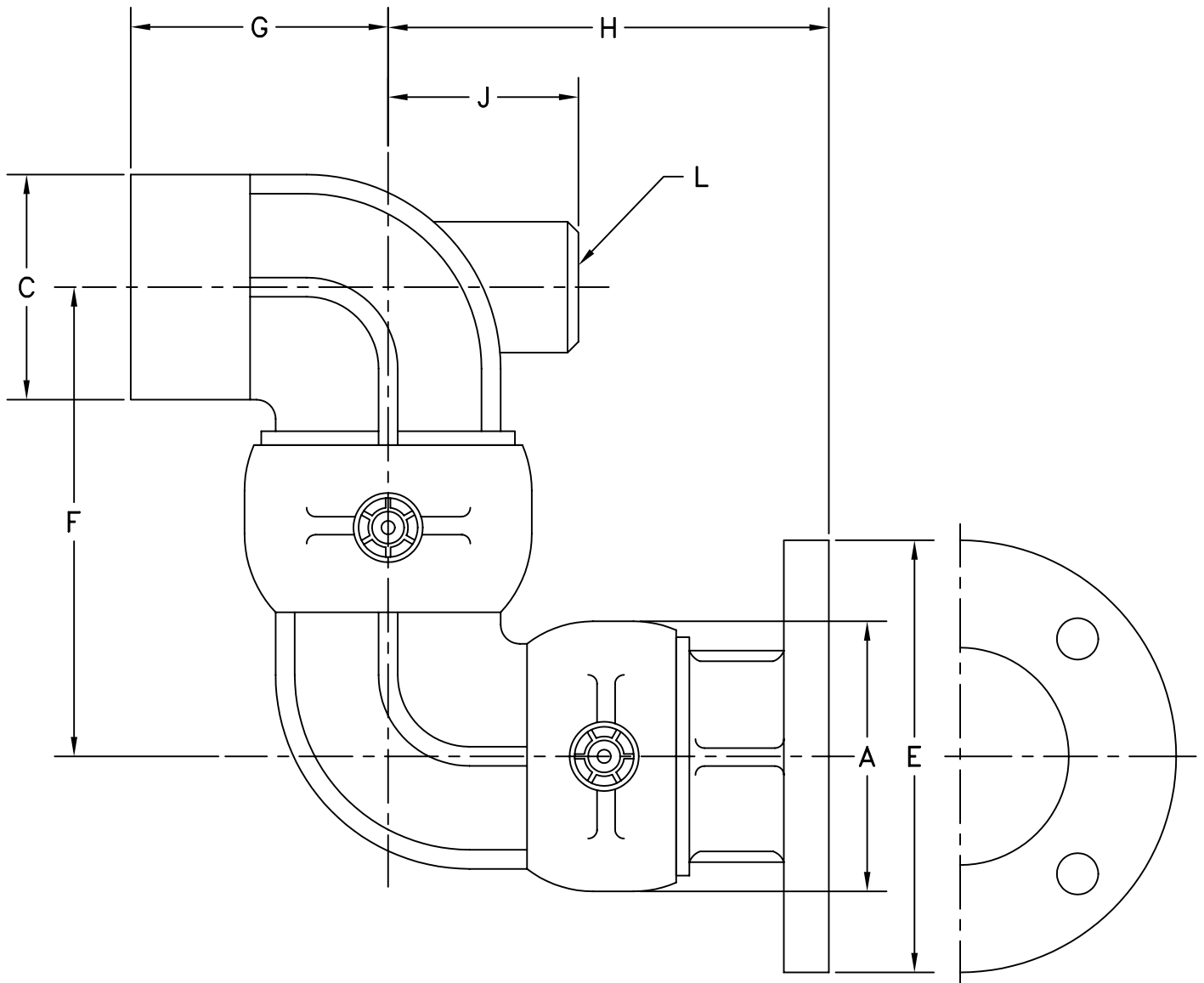


MATERIAL:  
 DUCTILE IRON (3")  
 ALUMINUM (3",4")

OPW Engineered Systems

STYLE 55FO SWIVEL JOINT-CAST



SIZE	3"	4"
A	4-7/8"	6-1/16"
C	4"	5"
E	7-1/2"	9"
F	7-5/8"	9-1/4"
G	4-5/8"	5"
H	6-7/8"	8-3/32"
J	2-9/16"	3-1/8"
L	1-1/2"	2"
∅ BOLT CIRCLE	6"	7-1/2"
NO. BOLTS - ∅	(4) 5/8"	(8) 3/4"