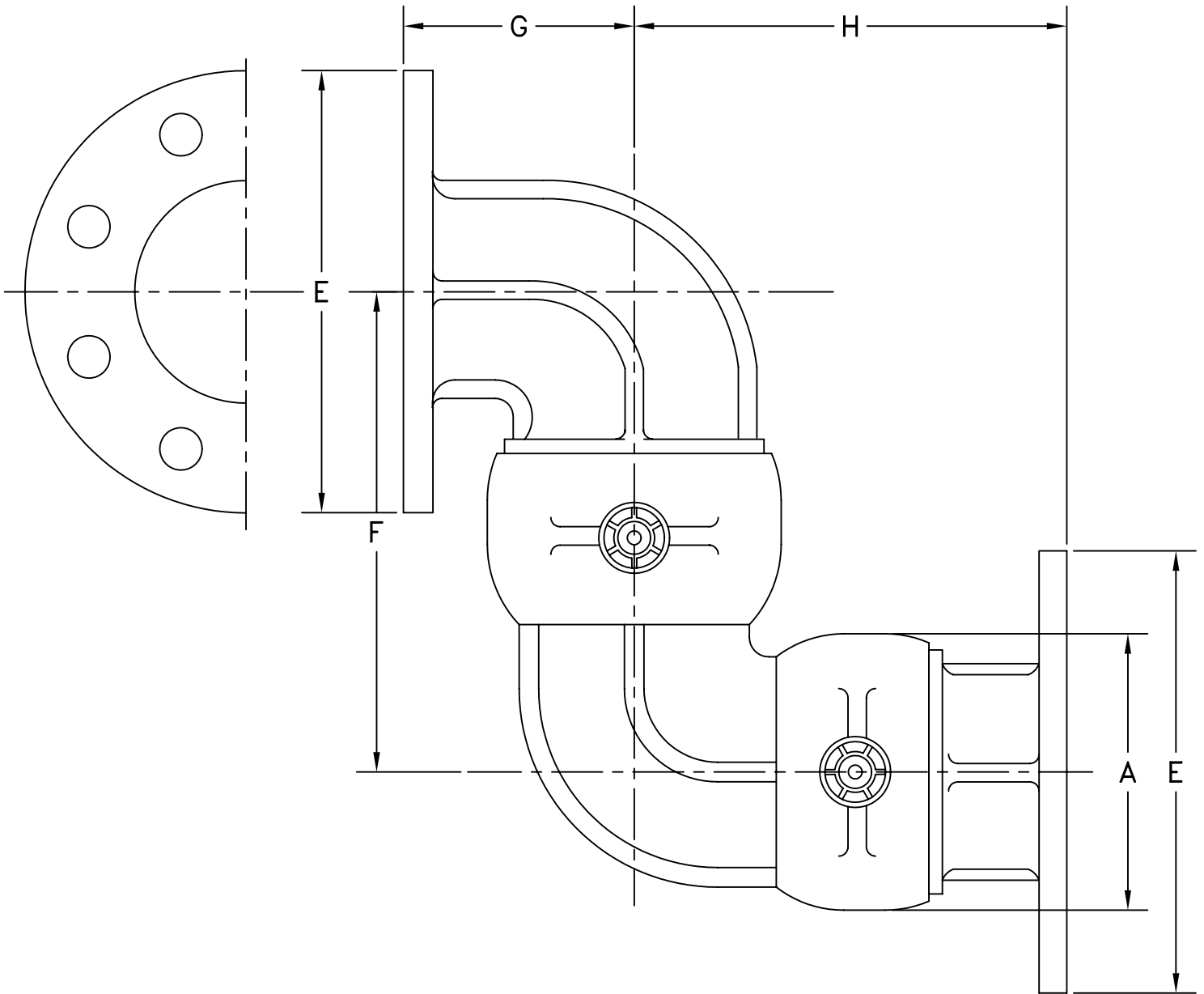


MATERIAL:
ALUMINUM

OPW Engineered Systems

STYLE 50LFT SWIVEL JOINT—CAST



SIZE	3"	4"
A	4-7/8"	6-1/16"
E	5-5/8"	6-5/8"
F	10-3/8"	10-1/4"
G	5"	6-1/16"
H	6-3/4"	10"
∅ BOLT CIRCLE	4-7/8"	5-7/8"
NO. BOLTS - ∅	(8) 7/16"	(8) 7/16"