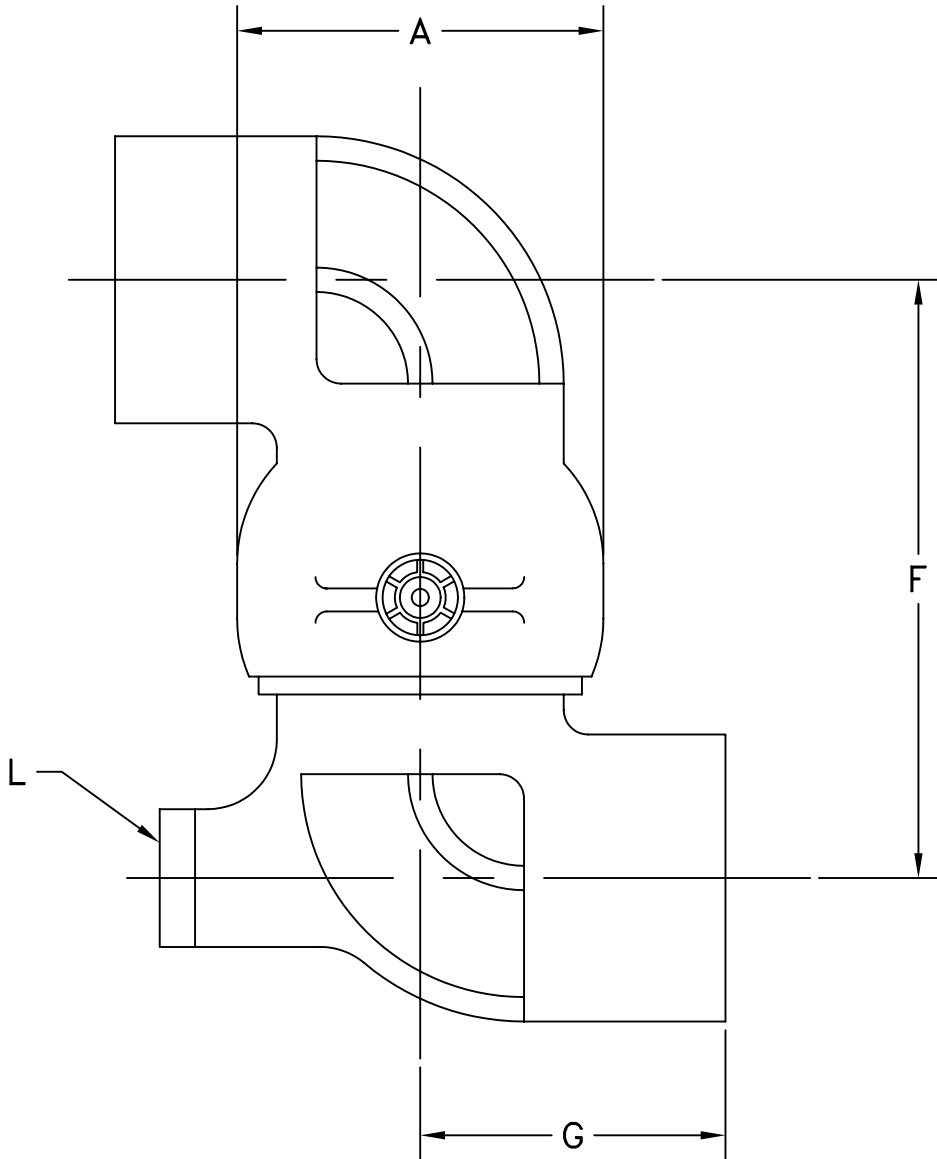


MATERIAL:  
ALUMINUM  
BRONZE  
DUCTILE IRON

OPW Engineered Systems

STYLE 45 SWIVEL JOINT—CAST



SIZE	2"	3"	4"
A	3-3/4"	4-7/8"	6-1/16"
F	6-1/8"	7-5/8"	9-1/4"
G	3-1/8"	4-5/8"	5"
L	1-1/4"	1-1/2"	2"