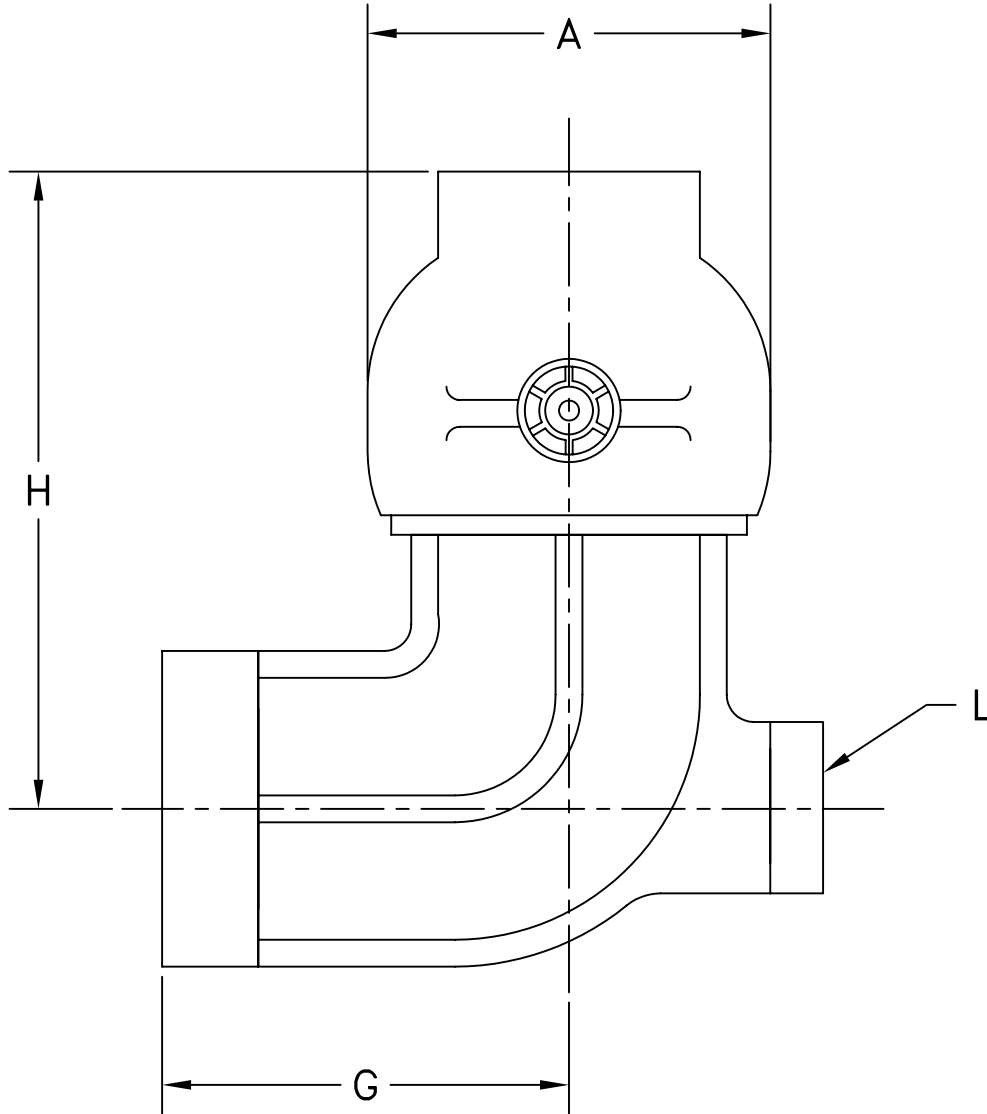


MATERIAL:
ALUMINUM
BRONZE
DUCTILE IRON

OPW Engineered Systems

STYLE 35 SWIVEL JOINT—CAST



SIZE	2"	3"	4"
A	3-3/4"	4-7/8"	6-1/16"
G	3-1/8"	4-5/8"	5"
H	6-3/16"	7-11/32"	8-3/4"
L	1-1/4"	1-1/2"	2"