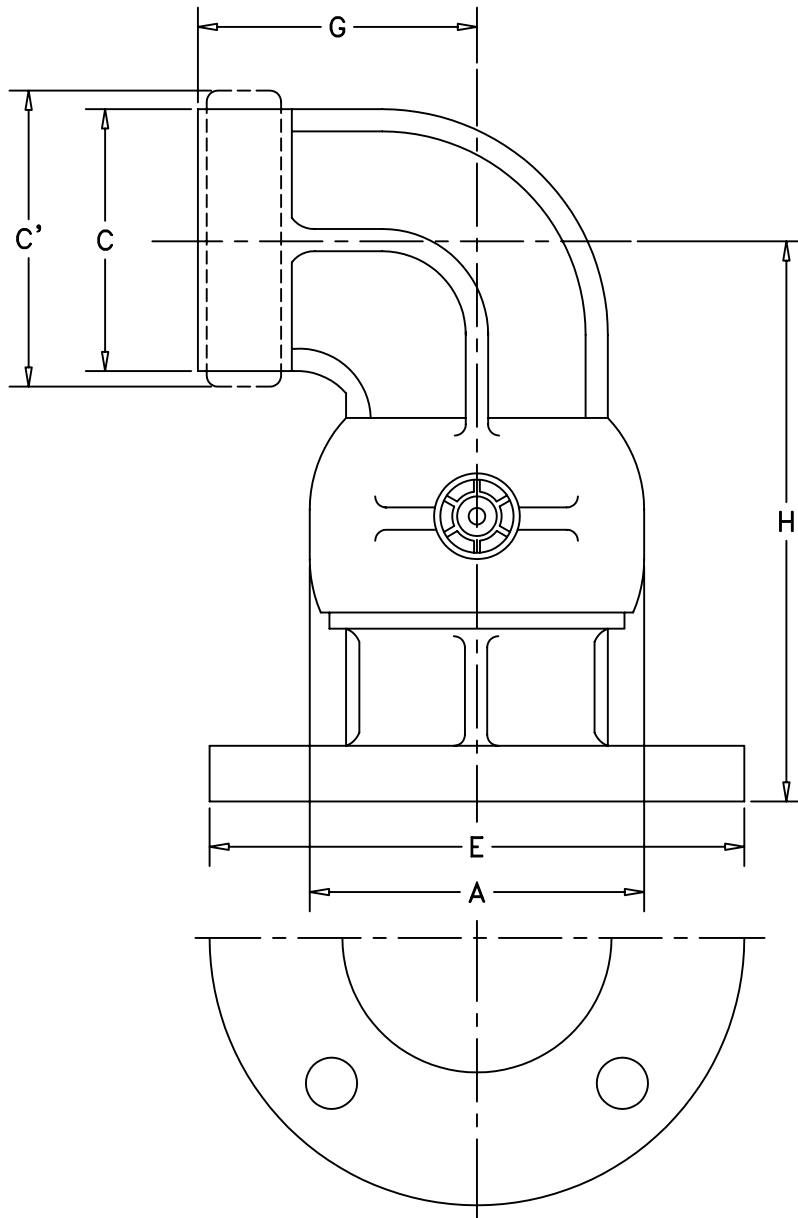


MATERIAL:  
ALUMINUM & DUCTILE IRON  
SIZE: 3" & 4"

OPW Engineered Systems

STYLE 30FO SWIVEL JOINT-CAST



SIZE	3"	4"
A	4-7/8"	6-1/16"
C	4"	5"
C'	5-53/64"	5-53/64"
E	7-1/2"	7-3/4"
G	4-5/8"	5"
H	6-13/16"	8-3/32"
∅ BOLT CIRCLE	6"	7-1/2"
NO. BOLTS - ∅	(4) 5/8"	(8) 5/8"