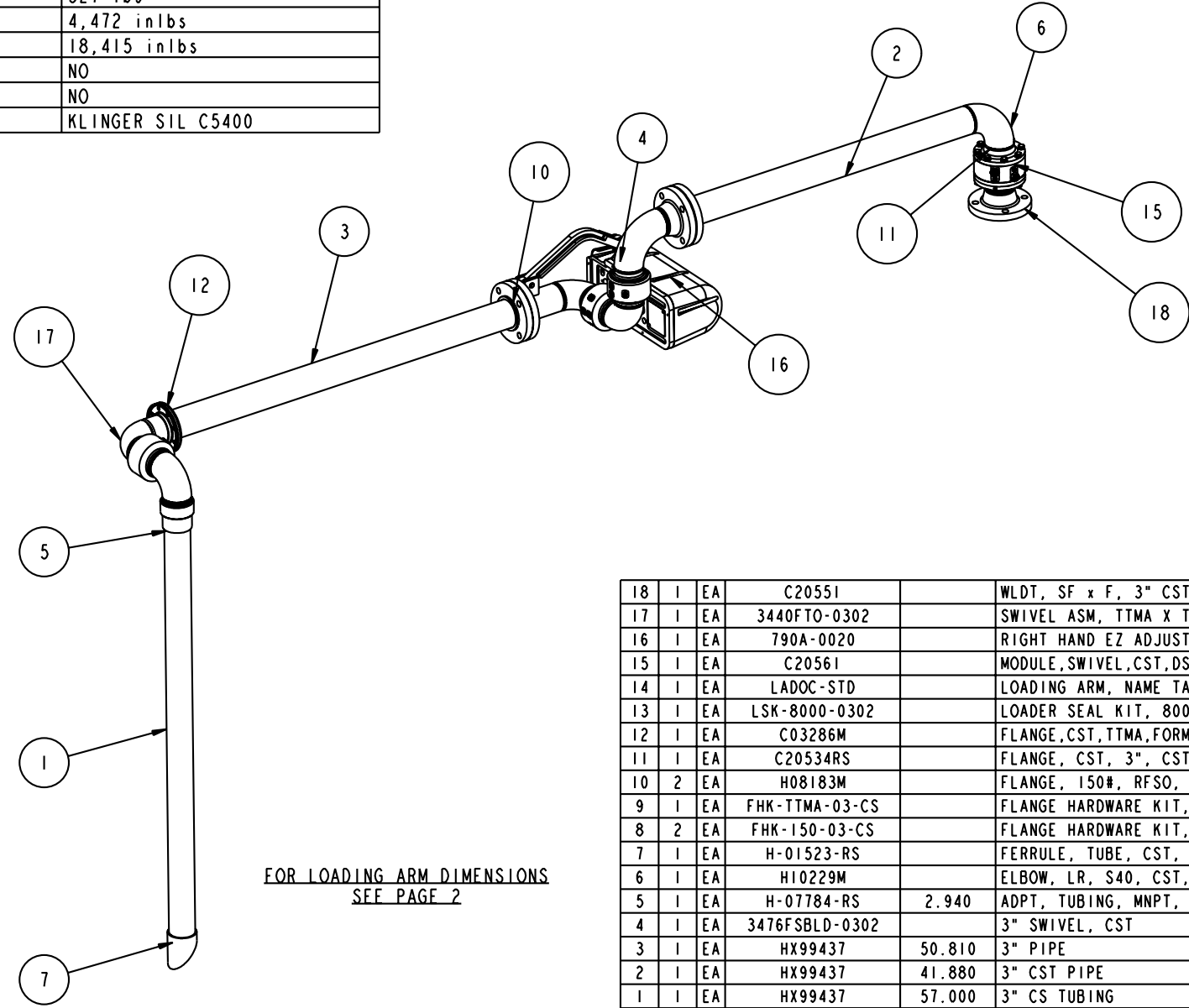


MATERIALS OF CONSTRUCTION	CARBON STEEL
SWIVEL JOINT SEALS	FLUOROCARBON GFLT
PRODUCT	VEGETABLE OIL
ESTIMATED WEIGHT	327 lbs
MOMENT LOAD AT SPRING	4,472 inlbs
MOMENT LOAD AT INLET	18,415 inlbs
PRODUCT RETENTION	NO
WEIGHT BY OTHERS	NO
FLANGE GASKETS	KLINGER SIL C5400

THIS DRAWING IS NOT TO BE SCALED. FOR ADDITIONAL INFORMATION, PLEASE CONTACT OUR ENGINEERING DEPT.

REVISIONS					
LTR	ECN #	DESCRIPTION	DRAWN	APPROVED	DATE
-	-	-	-	-	-



FOR LOADING ARM DIMENSIONS  
SEE PAGE 2

ITEM	QTY	UM	PART NUMBER	LENGTH	DESCRIPTION
18	1	EA	C20551		WLDT, SF x F, 3" CST DSF
17	1	EA	3440FTO-0302		SWIVEL ASM, TTMA X THRD, GFLT, CST, 3"
16	1	EA	790A-0020		RIGHT HAND EZ ADJUST 'A' SPRING
15	1	EA	C20561		MODULE, SWIVEL, CST, DSF, 3"
14	1	EA	LADOC-STD		LOADING ARM, NAME TAG AND HARDWARE
13	1	EA	LSK-8000-0302		LOADER SEAL KIT, 8000, FLUOROCARBON, 3"
12	1	EA	C03286M		FLANGE, CST, TTMA, FORMED, 3"
11	1	EA	C20534RS		FLANGE, CST, 3", CST
10	2	EA	H08183M		FLANGE, 150#, RFSO, CST, 3"
9	1	EA	FHK-TTMA-03-CS		FLANGE HARDWARE KIT, TTMA, CS, 3"
8	2	EA	FHK-150-03-CS		FLANGE HARDWARE KIT, 150LB, CS, 3"
7	1	EA	H-01523-RS		FERRULE, TUBE, CST, 3"
6	1	EA	H10229M		ELBOW, LR, S40, CST, 3"
5	1	EA	H-07784-RS	2.940	ADPT, TUBING, MNPT, CST, 3"
4	1	EA	3476FSBLD-0302		3" SWIVEL, CST
3	1	EA	HX99437	50.810	3" PIPE
2	1	EA	HX99437	41.880	3" CST PIPE
1	1	EA	HX99437	57.000	3" CS TUBING

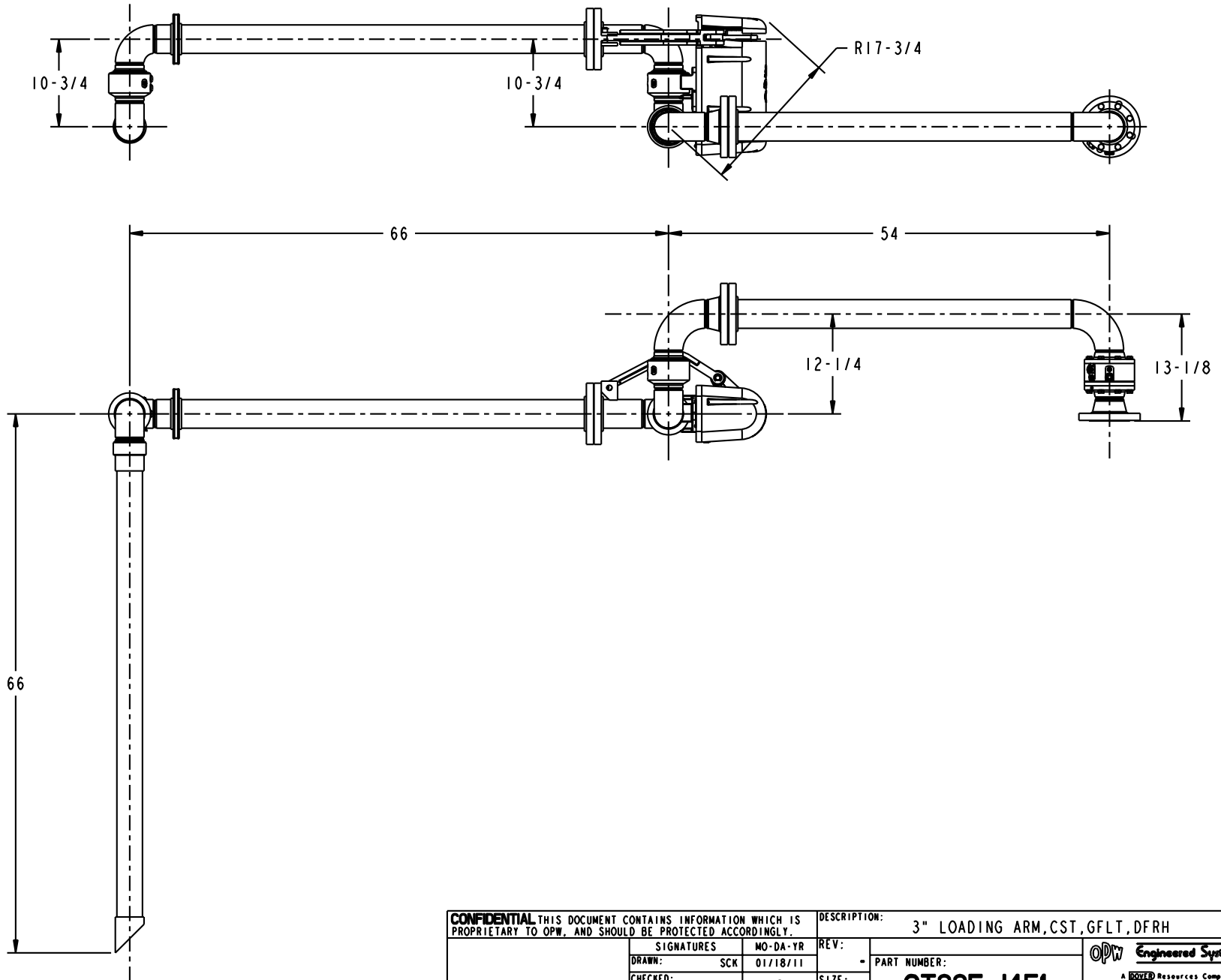
**CONFIDENTIAL** THIS DOCUMENT CONTAINS INFORMATION WHICH IS PROPRIETARY TO OPW, AND SHOULD BE PROTECTED ACCORDINGLY.

DESCRIPTION: 3" LOADING ARM, CST, GFLT, DFRH

SIGNATURES	MO-DA-YR	REV:	PART NUMBER:
DRAWN: SCK	01/18/11	-	GT33F-J451
CHECKED:	-	SIZE:	D
MATERIAL: CST	WEIGHT:	SCALE: 0.095	SHEET 1 OF 3

**OPW Engineered Systems**  
A BOSTED Resources Company  
Lebanon, Ohio 45036 USA  
3D GENERATED DRAWING

THIS DRAWING IS NOT TO BE SCALED. FOR ADDITIONAL INFORMATION, PLEASE CONTACT OUR ENGINEERING DEPT.



<b>CONFIDENTIAL</b> THIS DOCUMENT CONTAINS INFORMATION WHICH IS PROPRIETARY TO OPW, AND SHOULD BE PROTECTED ACCORDINGLY.				DESCRIPTION: 3" LOADING ARM, CST, GFLT, DFRH	
SIGNATURES		MO-DA-YR	REV:	PART NUMBER:	
DRAWN:	SCK	01/18/11	-	GT33F-J451	
CHECKED:	-	-	SIZE:	D	
MATERIAL:	CST	WEIGHT:	-	SCALE: 0.095	SHEET 2 OF 3
				<b>Engineered Systems</b> <small>A BOSTON Resources Company</small> Lebanon, Ohio 45036 USA 3D GENERATED DRAWING	