

MATERIALS OF CONSTRUCTION: CARBON STEEL

SWIVEL JOINT SEALS: VITON GFLT

PRODUCT: VEGETABLE OIL

ESTIMATED WEIGHT OF LOADING ARM: 320 LBS

ESTIMATED MOMENT LOAD AT SPRING: 5,300 IN-LBS

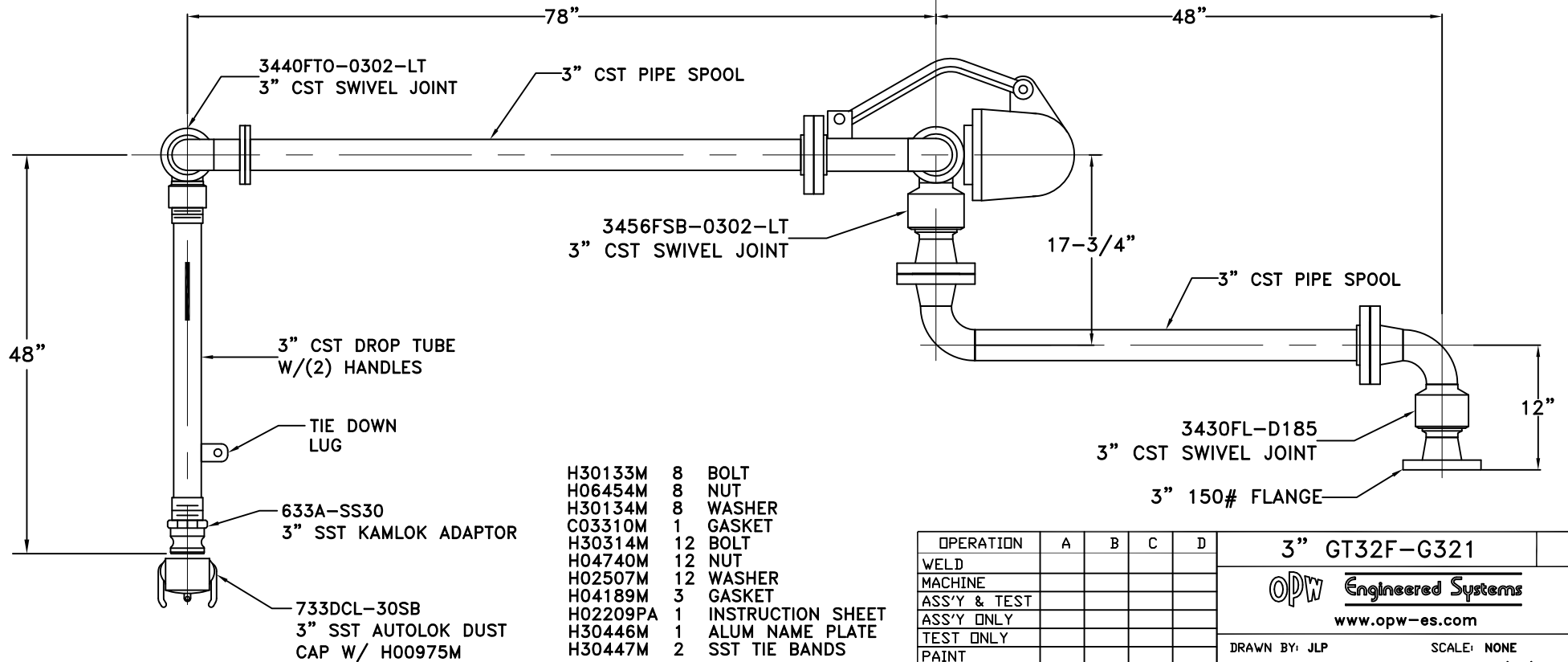
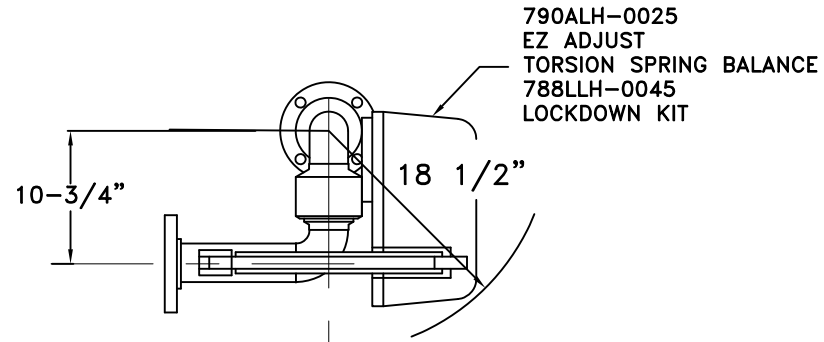
ESTIMATED MOMENT LOAD AT INLET: 17,300 IN-LBS

FLANGE GASKETS: KLINGER SIL C5400

TEST PRESSURE: 90 PSI

LOADING ARM NOT DESIGNED FOR PRODUCT RETENTION

LOADING ARM NOT DESIGNED FOR WEIGHT BY OTHERS



- | | | |
|----------|----|-------------------|
| H30133M | 8 | BOLT |
| H06454M | 8 | NUT |
| H30134M | 8 | WASHER |
| C03310M | 1 | GASKET |
| H30314M | 12 | BOLT |
| H04740M | 12 | NUT |
| H02507M | 12 | WASHER |
| H04189M | 3 | GASKET |
| H02209PA | 1 | INSTRUCTION SHEET |
| H30446M | 1 | ALUM NAME PLATE |
| H30447M | 2 | SST TIE BANDS |

OPERATION	A	B	C	D
WELD				
MACHINE				
ASS'Y & TEST				
ASS'Y ONLY				
TEST ONLY				
PAINT				

3" GT32F-G321

OPW Engineered Systems
www.opw-es.com

DRAWN BY: JLP	SCALE: NONE
CHECKED BY:	DATE: 04/02/08
QUOTE NO. 18750	DRAWING NO. SK18750C

1. HIGHLIGHT REQ'D OPERATIONS PER ASS'Y.
2. RECORD CLOCK NO. WHEN COMPLETE.