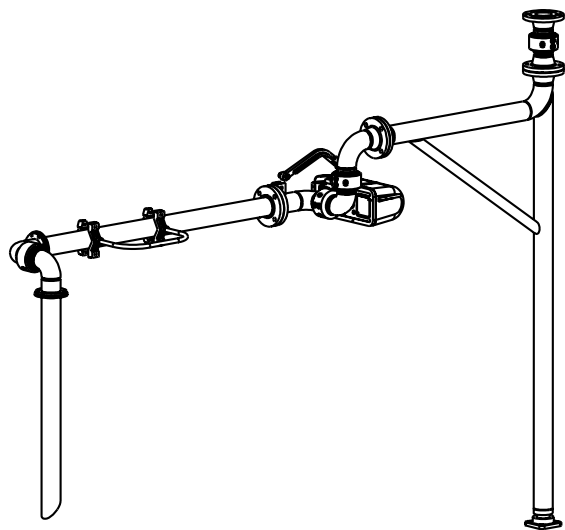


MATERIALS OF CONSTRUCTION	316L STAINLESS STEEL
SWIVEL JOINT SEALS	FDA NITRILE
PRODUCT	FINISHED VEGETABLE OIL
ESTIMATED WEIGHT	400 LBS
MOMENT LOAD AT SPRING	5100 IN-LBS
MOMENT LOAD AT INLET	19,300 IN-LBS
FLANGE GASKETS	KLINGER SIL C5400
TEST PRESSURE	90 PSI
PRODUCT RETENTION	NO
ADDITIONAL WEIGHT BY OTHERS	NO

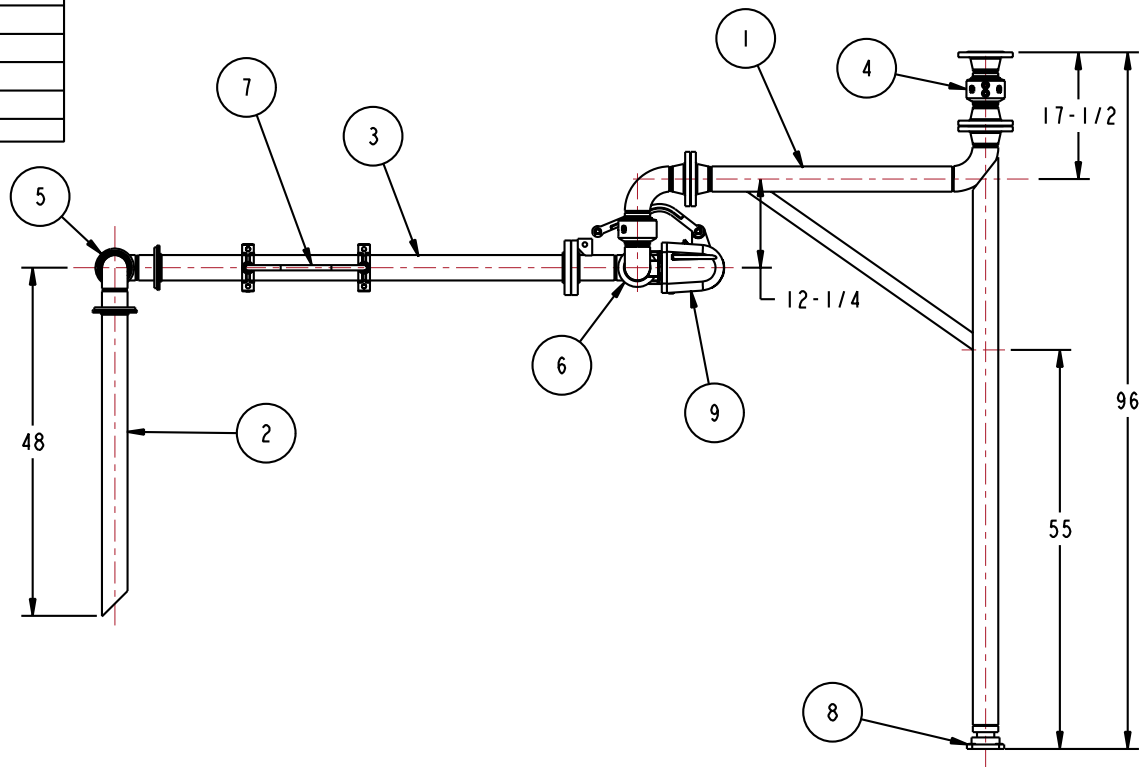
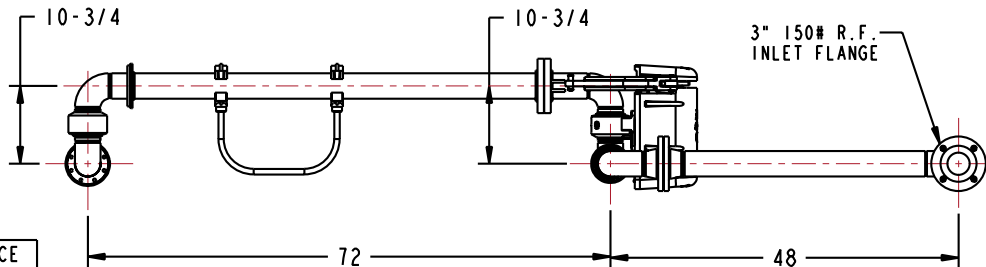
9	1	EA	790A-0020	RIGHT HAND EZ ADJUST 'A' SPRING BALANCE
8	1	EA	H-30369-M	FLANGE BEARING
7	1	EA	C21372	BOLT ON HANDLE, ALUM, 3"
6	1	EA	3976FSBLD-0305-FDA	3" SWIVEL, SST
5	1	EA	3940FT-0305-FDA	3" SWIVEL, SST
4	1	EA	3920F-0305	3" SWIVEL, SST
3	1	EA	N/A	3" SST OBR PIPE SPOOL
2	1	EA	N/A	3" SST DROP PIPE SPOOL
1	1	EA	N/A	3" BOOM ASSY W/SST WETTED PARTS
ITEM	QTY	UM	PART NUMBER	DESCRIPTION

NOTE:
ALL WELDS TO BE TIG-PURGE AND INTERIOR
OF FLOW PASSAGE WELDS GROUND SMOOTH



THIS DRAWING IS NOT TO BE SCALED. FOR ADDITIONAL INFORMATION, PLEASE CONTACT OUR ENGINEERING DEPT.

REVISIONS					
LTR	ECN #	DESCRIPTION	DRAWN	APPROVED	DATE
-	-	-	-	-	-



CONFIDENTIAL THIS DOCUMENT CONTAINS INFORMATION WHICH IS PROPRIETARY TO OPW, AND SHOULD BE PROTECTED ACCORDINGLY.				DESCRIPTION: 3" TOP LOADING ARM, DFRH	
SIGNATURES		MO-DA-YR	REV:	PART NUMBER:	
DRAWN: BJB		8/17/09	-	B33F-H505	
CHECKED:		-	SIZE:	D	
MATERIAL:		WEIGHT:	SCALE: 0.080 SHEET 1 OF 3		
				Engineered Systems <small>A BOSTED Resources Company</small> Lebanon, Ohio 45036 USA 3D GENERATED DRAWING	