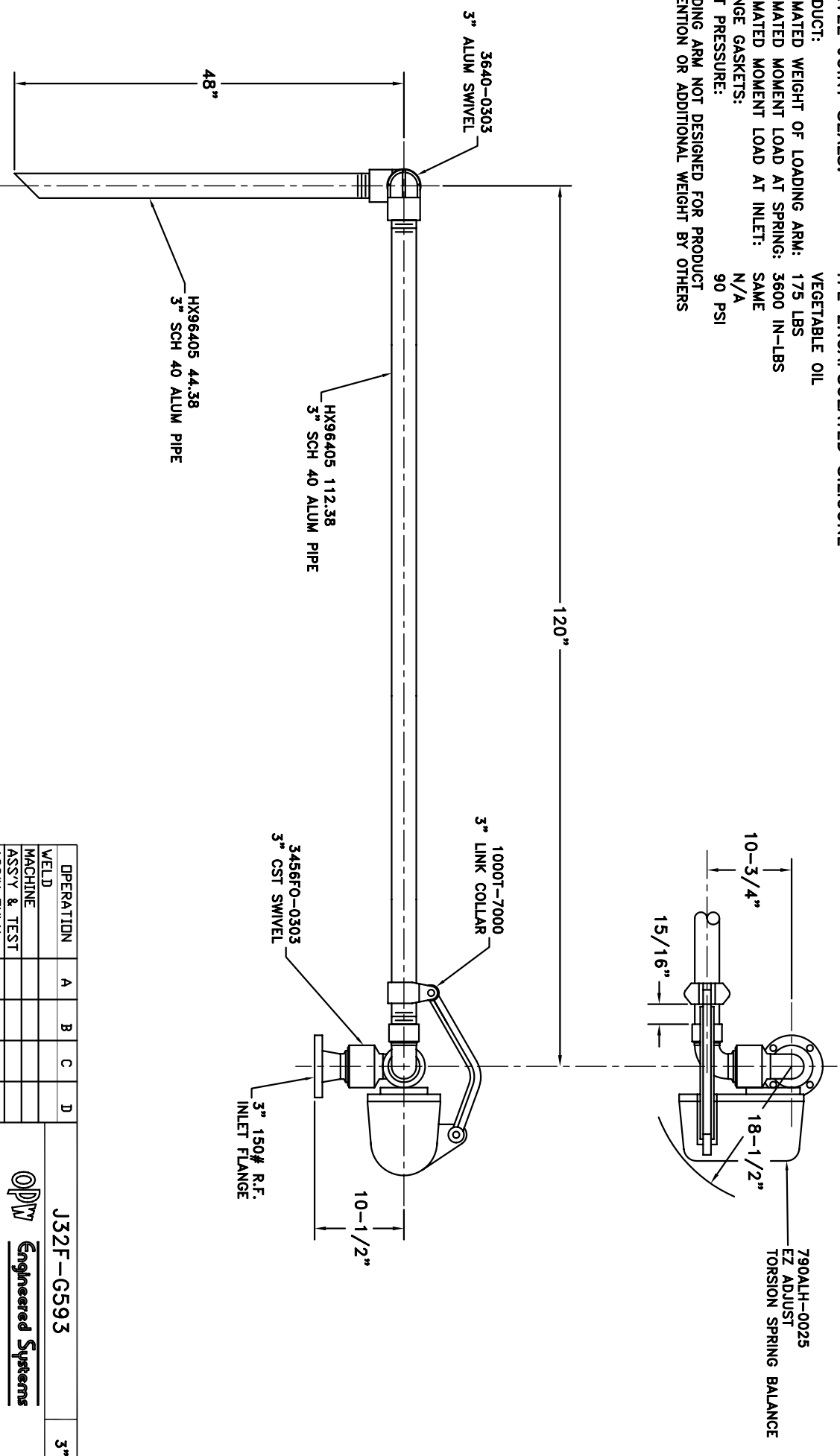


MATERIALS OF CONSTRUCTION: CARBON STEEL & ALUMINUM  
 SWIVEL JOINT SEALS: TFE ENCAPSULATED SILICONE

PRODUCT: VEGETABLE OIL  
 ESTIMATED WEIGHT OF LOADING ARM: 175 LBS  
 ESTIMATED MOMENT LOAD AT SPRING: 3600 IN-LBS  
 ESTIMATED MOMENT LOAD AT INLET: SAME  
 FLANGE GASKETS: N/A  
 TEST PRESSURE: 90 PSI  
 LOADING ARM NOT DESIGNED FOR PRODUCT RETENTION OR ADDITIONAL WEIGHT BY OTHERS



- H02209PA 1 INSTRUCTION SHEET
- H30446M 1 ALUM NAME PLATE
- H30447M 2 SST TIE BANDS

OPERATION	A	B	C	D
WELD				
MACHINE				
ASSY & TEST				
ASSY ONLY				
TEST ONLY				
PAINT				

1. HIGHLIGHT RECD OPERATIONS PER ASSY.  
 2. RECORD CLOCK NO. WHEN COMPLETE.

**J32F-G593** 3"

**OPW** **Engineered Systems**  
 www.opw-es.com

DRAWN BY: BUB      SCALE: NONE  
 CHECKED BY:      DATE: 7/17/08  
 QUOTE NO. 19021      DRAWING: ND, SK19021A