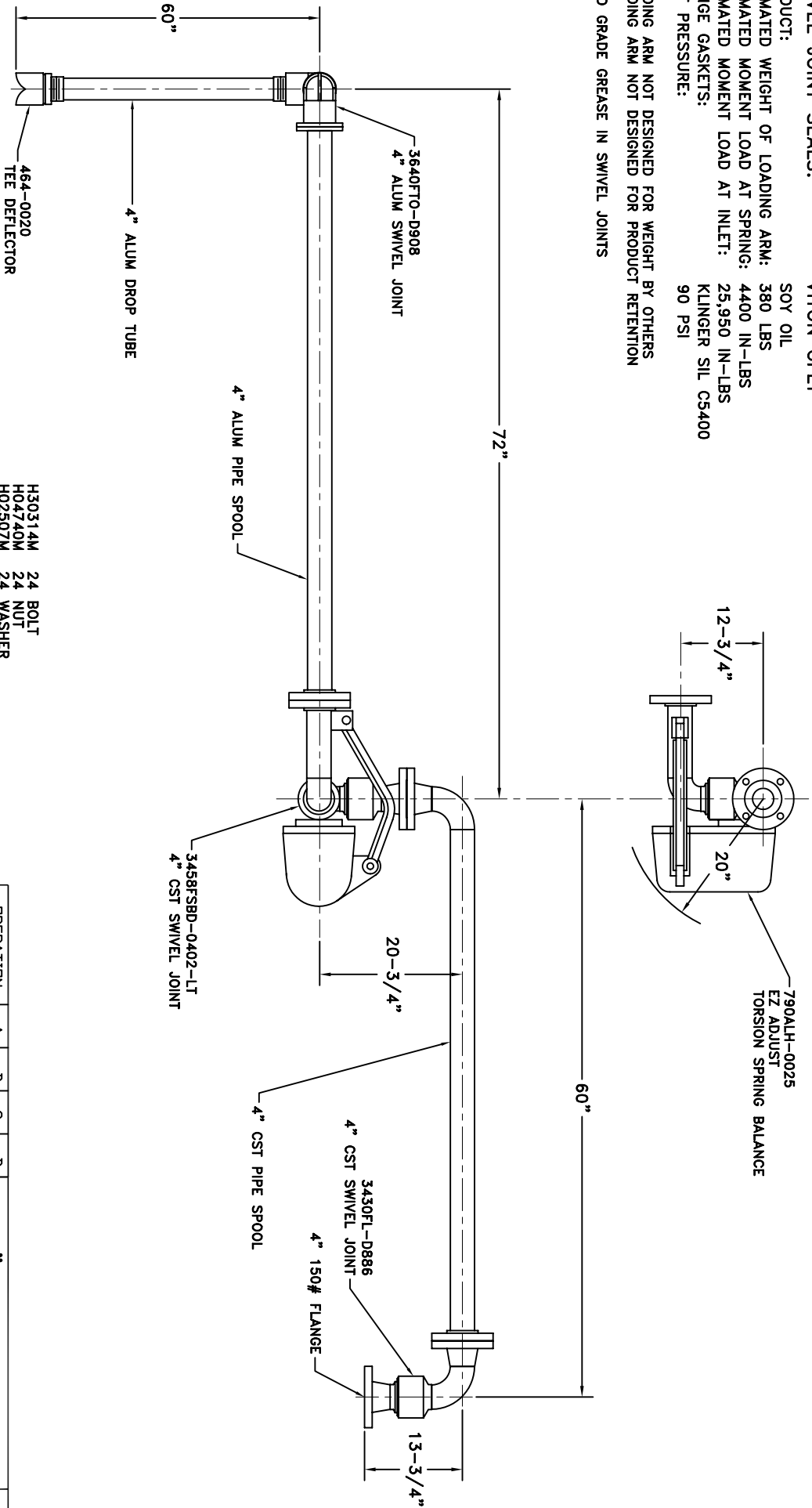


**MATERIALS OF CONSTRUCTION: CARBON STEEL / ALUMINUM**  
**SWIVEL JOINT SEALS: VITON GFLT**

**PRODUCT:** SOY OIL  
**ESTIMATED WEIGHT OF LOADING ARM:** 380 LBS  
**ESTIMATED MOMENT LOAD AT SPRING:** 4400 IN-LBS  
**ESTIMATED MOMENT LOAD AT INLET:** 25,950 IN-LBS  
**FLANGE GASKETS:** KLINGER SIL CS400  
**TEST PRESSURE:** 90 PSI

**LOADING ARM NOT DESIGNED FOR WEIGHT BY OTHERS**  
**LOADING ARM NOT DESIGNED FOR PRODUCT RETENTION**  
**FOOD GRADE GREASE IN SWIVEL JOINTS**



- H30314M 24 BOLT
- H04740M 24 NUT
- H02507M 24 WASHER
- H04190M 3 GASKET
- H30133M 8 BOLT
- H06454M 8 NUT
- H30134M 8 WASHER
- C03278M 1 GASKET
- H02209PA 1 INSTRUCTION SHEET
- H30446M 1 ALUM. NAME PLATE
- H30447M 2 SST. TIE BANDS

OPERATION	A	B	C	D
WELD				
MACHINE				
ASSY & TEST				
ASSY. ONLY				
TEST ONLY				
PAINT				

1. HIGHLIGHT RECD. OPERATIONS PER ASSY.  
 2. RECORD CLOCK NO. WHEN COMPLETE.

**4" GT33F-G984**

**Engineered Systems**

DRAWN BY: JLP  
 CHECKED BY: [ ]  
 QUOTE NO. N/A

SCALE: NONE  
 DATE: 11/03/08  
 DRAWING NO. [ ]

L.H.