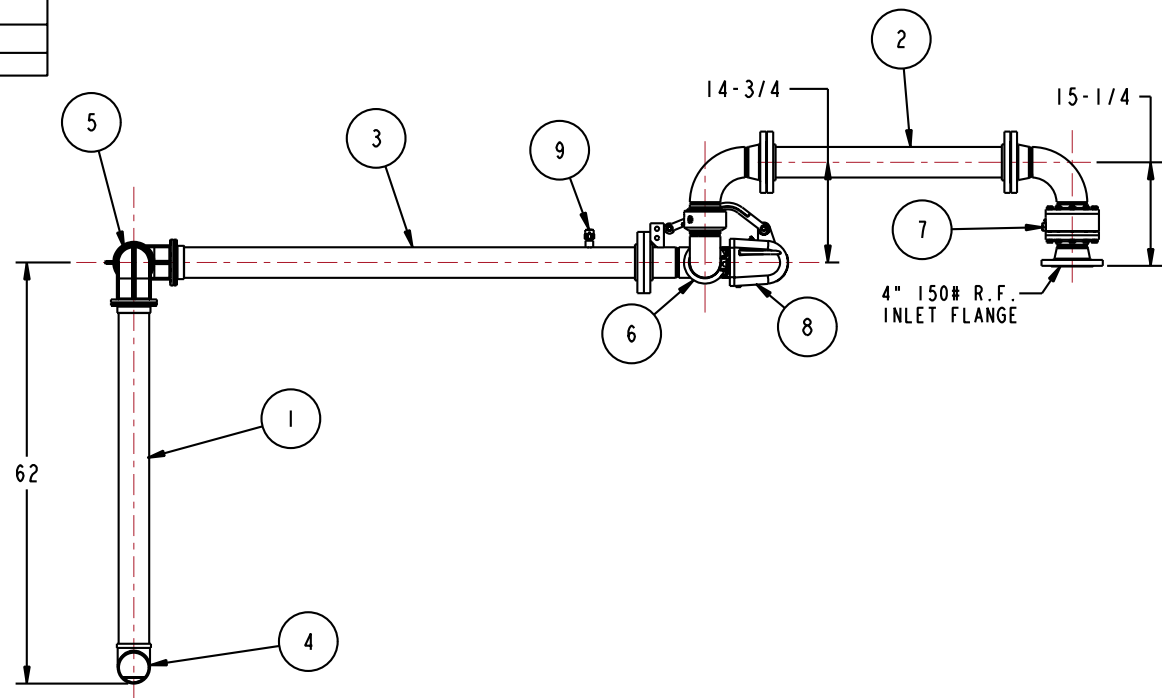
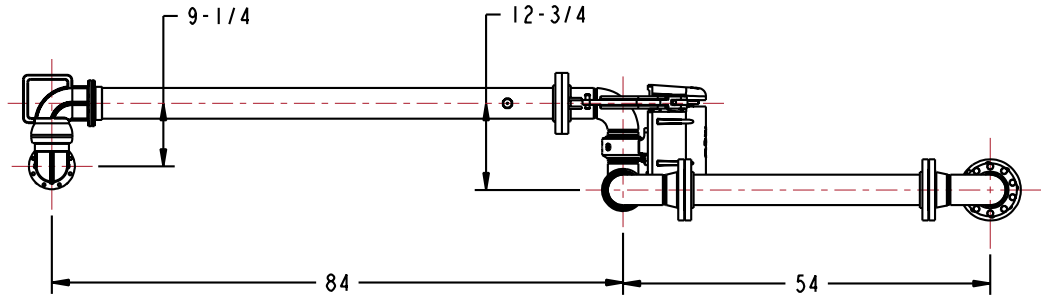


MATERIALS OF CONSTRUCTION	CARBON STEEL & ALUMINUM
SWIVEL JOINT SEALS	FLUOROCARBON GFLT
PRODUCT	SOYBEAN OIL, BIODIESEL, NON FOOD GRADE GLYCERIN
ESTIMATED WEIGHT	450 LBS
MOMENT LOAD AT SPRING	4350 IN-LBS
MOMENT LOAD AT INLET	21,550 IN-LBS
FLANGE GASKETS	KLINGER SIL C5400
TEST PRESSURE	90 PSI
PRODUCT RETENTION	NO
WEIGHT BY OTHERS	NO

ITEM	QTY	UM	PART NUMBER	DESCRIPTION
9	1	EA	476SA-0150	VACUUM BREAKER, 1" FNPT
8	1	EA	790A-0020	RIGHT HAND EZ ADJUST 'A' SPRING BALANCE
7	1	EA	8430F-0402	4" SWIVEL, ENDURA DSF, CST
6	1	EA	3476FSBLD-0402	4" SWIVEL, CST
5	1	EA	3640FT-0402	4" SWIVEL, CAST ALUM
4	1	EA	464-0200	4" ALUMINUM TEE DEFLECTOR
3	1	EA	N/A	4" ALUM OBR PIPE SPOOL ASSY
2	1	EA	N/A	4" ALUM IBR PIPE SPOOL
1	1	EA	N/A	4" ALUM DROP PIPE SPOOL

THIS DRAWING IS NOT TO BE SCALED. FOR ADDITIONAL INFORMATION, PLEASE CONTACT OUR ENGINEERING DEPT.

REVISIONS				DRAWN	APPROVED	DATE
LTR	ECN #	DESCRIPTION				
-	-	-	-	-	-	-



CONFIDENTIAL THIS DOCUMENT CONTAINS INFORMATION WHICH IS PROPRIETARY TO OPW, AND SHOULD BE PROTECTED ACCORDINGLY.

DESCRIPTION: 4" TOP LOADING ARM, DFRH

SIGNATURES		MO-DA-YR
DRAWN: BJB		2/4/10
CHECKED:		
MATERIAL:	WEIGHT:	

REV: -	PART NUMBER:
SIZE: D	GT33F-H802
SCALE: 0.075	SHEET 1 OF 2

OPW **Engineered Systems**
 A **ROBTEC** Resources Company
 Lebanon, Ohio 45036 USA
 3D GENERATED DRAWING