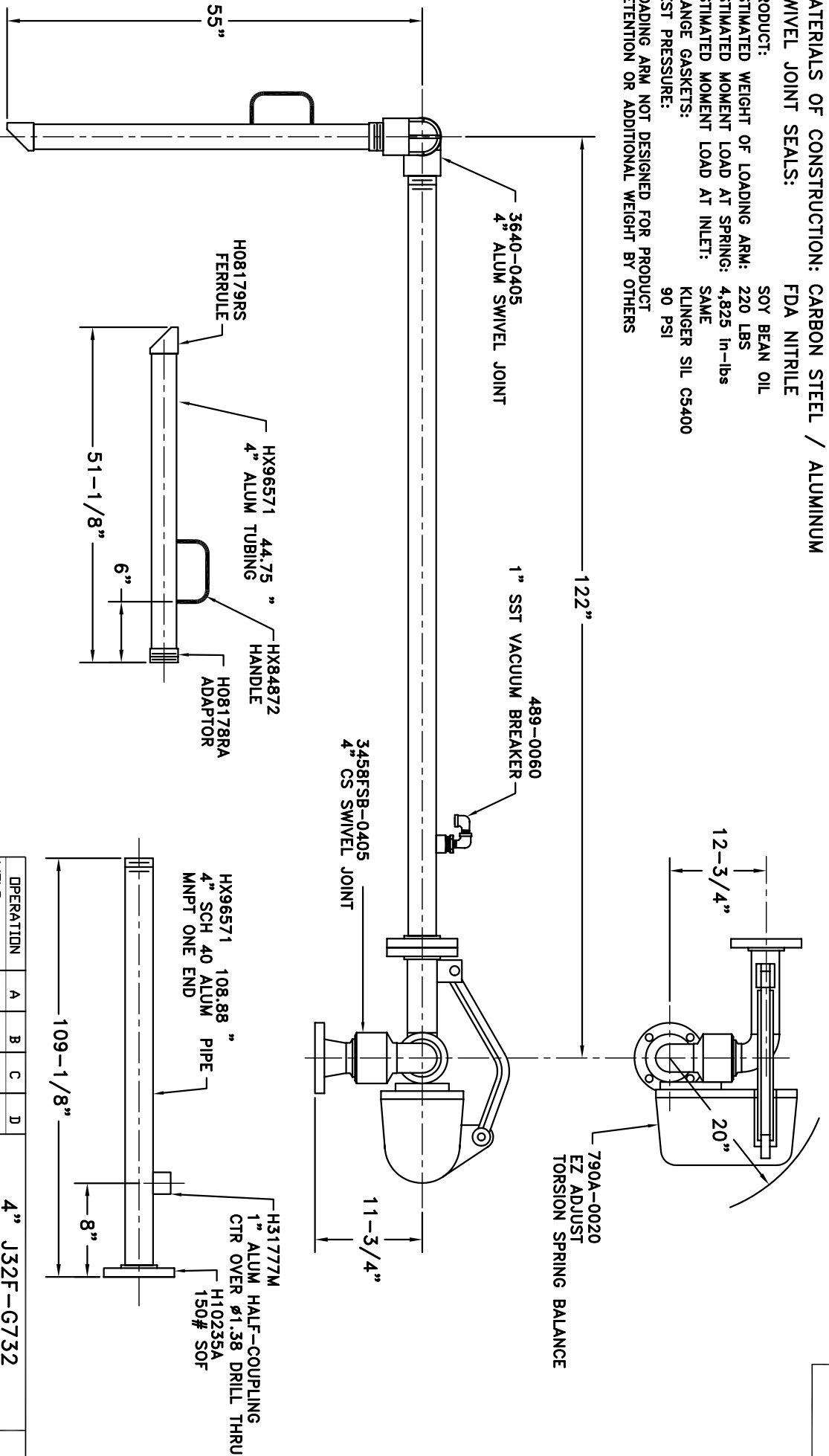


MATERIALS OF CONSTRUCTION: CARBON STEEL / ALUMINUM  
 SWIVEL JOINT SEALS: FDA NITRILE

PRODUCT: SOY BEAN OIL  
 ESTIMATED WEIGHT OF LOADING ARM: 220 LBS  
 ESTIMATED MOMENT LOAD AT SPRING: 4,825 In-lbs  
 ESTIMATED MOMENT LOAD AT INLET: SAME  
 FLANGE GASKETS: KLINGER SIL C5400  
 TEST PRESSURE: 90 PSI  
 LOADING ARM NOT DESIGNED FOR PRODUCT RETENTION OR ADDITIONAL WEIGHT BY OTHERS



- H30314M 8 BOLT
- H04740M 8 NUT
- H02507M 8 WASHER
- H04190M 1 GASKET
- H02209PA 1 INSTRUCTION SHEET
- H30446M 1 ALUM NAME PLATE
- H30447M 2 SST TIE BANDS

OPERATION	A	B	C	D
WELD				
MACHINE				
ASSY & TEST				
ASSY ONLY				
TEST ONLY				
PAINT				

4" J32F-G732

www.opw-es.com

Engineered Systems

SCALE: NONE

DRAWN BY: BAB

CHECKED BY:

DATE: 8/22/08

DRAWING NO.

1. HIGHLIGHT REQ'D OPERATIONS PER ASSY.  
 2. RECORD CLOCK NO. WHEN COMPLETE.