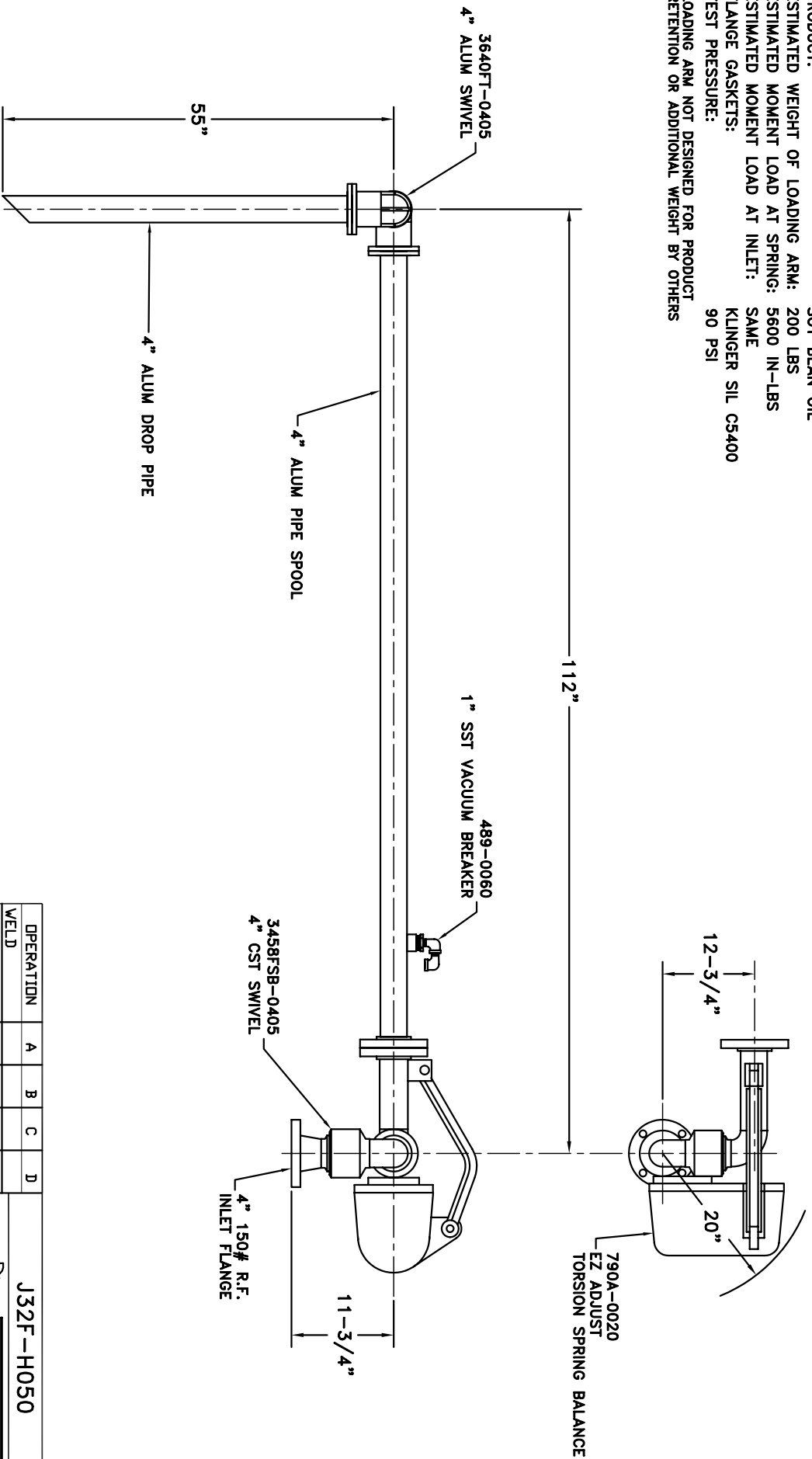


MATERIALS OF CONSTRUCTION: CARBON STEEL & ALUMINUM  
 SWIVEL JOINT SEALS: FDA NITRILE W/FDA LUBE

PRODUCT: SOY BEAN OIL  
 ESTIMATED WEIGHT OF LOADING ARM: 200 LBS  
 ESTIMATED MOMENT LOAD AT SPRING: 5600 IN-LBS  
 ESTIMATED MOMENT LOAD AT INLET: SAME  
 FLANGE GASKETS: KLINGER SIL CS400  
 TEST PRESSURE: 90 PSI  
 LOADING ARM NOT DESIGNED FOR PRODUCT RETENTION OR ADDITIONAL WEIGHT BY OTHERS



OPERATION	A	B	C	D
WELD				
MACHINE				
ASSY & TEST				
ASSY ONLY				
TEST ONLY				
PAINT				

1. HIGHLIGHT RECD OPERATIONS PER ASSY.  
 2. RECORD CLOCK NO. WHEN COMPLETE.

**J32F-H050** 4"

**OPW** **Engineered Systems**  
 www.opw-es.com

DRAWN BY: BUB  
 CHECKED BY: SCALE: NONE  
 DATE: 12/5/08  
 QUOTE NO. DRAWING: ND.