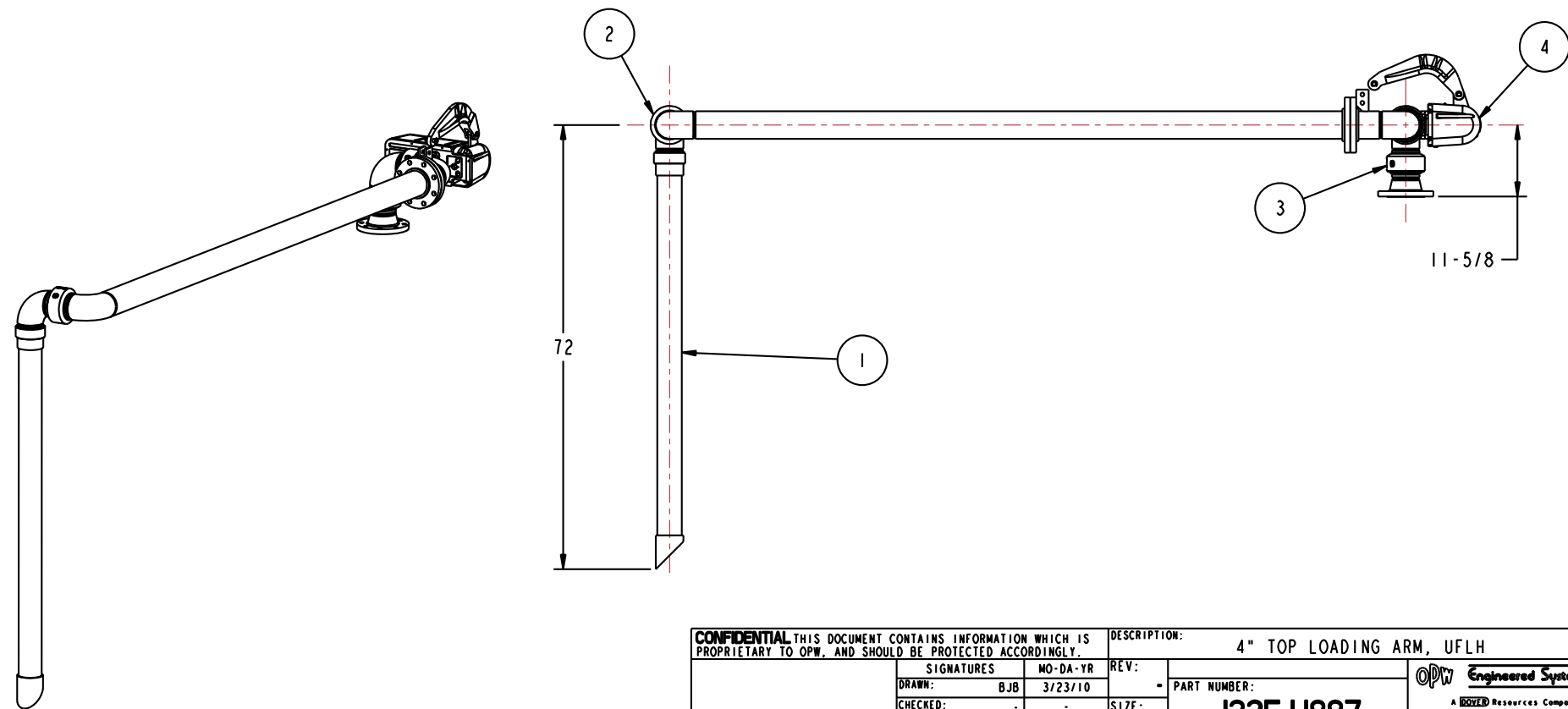
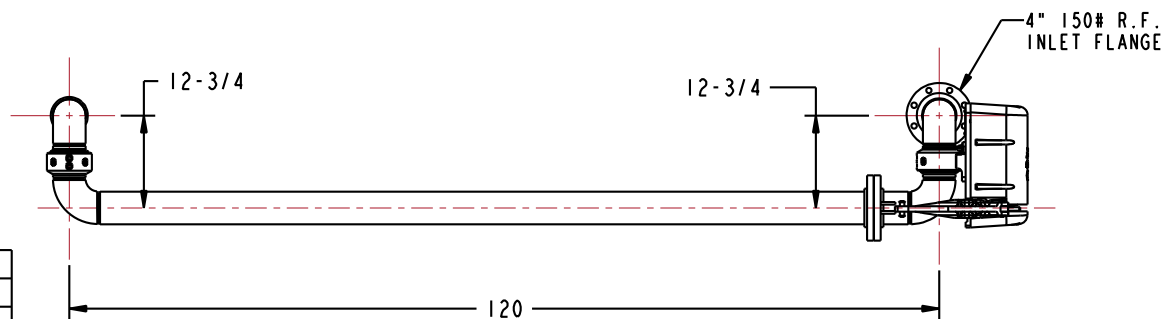


| | |
|---------------------------|-----------------------|
| MATERIALS OF CONSTRUCTION | CARBON STEEL |
| SWIVEL JOINT SEALS | FLUOROCARBON GFLT |
| PRODUCT | 93% SULFURIC ACID |
| ESTIMATED WEIGHT | 315 LBS |
| MOMENT LOAD AT SPRING | 13,225 IN-LBS |
| FLANGE GASKETS | KLINGER SIL C5400 |
| TEST PRESSURE | 90 PSI |
| PRODUCT RETENTION | NO |
| WEIGHT BY OTHERS | NO |
| RADIOGRAPHIC INSPECTION | 5% FLOW PASSAGE WELDS |

| | | | | |
|------|-----|----|--------------|----------------------------------------|
| 4 | 1 | EA | 790CLH-0045 | LEFT HAND EZ ADJUST 'C' SPRING BALANCE |
| 3 | 1 | EA | 3456FSB-0402 | 4" SWIVEL, CST |
| 2 | 1 | EA | 3440FW | 4" SWIVEL ASSY, CST |
| 1 | 1 | EA | N/A | 4" CST DROP TUBE ASSY |
| ITEM | QTY | UM | PART NUMBER | DESCRIPTION |

THIS DRAWING IS NOT TO BE SCALED. FOR ADDITIONAL INFORMATION, PLEASE CONTACT OUR ENGINEERING DEPT.

| REVISIONS | | | | | |
|-----------|-------|-------------|-------|----------|------|
| LTR | ECN # | DESCRIPTION | DRAWN | APPROVED | DATE |
| - | - | - | - | - | - |



CONFIDENTIAL THIS DOCUMENT CONTAINS INFORMATION WHICH IS PROPRIETARY TO OPW, AND SHOULD BE PROTECTED ACCORDINGLY.

DESCRIPTION: 4" TOP LOADING ARM, UFLH

| | | |
|-------------|-----------|----------|
| SIGNATURES | | MO-DA-YR |
| DRAWN: BJB | | 3/23/10 |
| CHECKED: - | | - |
| MATERIAL: - | WEIGHT: - | - |

| | |
|--------------|------------------------|
| REV: - | PART NUMBER: J32F-H887 |
| SIZE: D | SCALE: 0.080 |
| SHEET 1 OF 2 | |

OPW **Engineered Systems**
 A **ROBERT** Resources Company
 Lebanon, Ohio 45036 USA
 3D GENERATED DRAWING